

Så Sur Da

Why be so whiny?

Audun Rørmark, Simen Bakkåker,
Annika Sveinsson Momrak, Eline Nesje

Arr.: Haakon Esplo

With drive ♩ = 110

PART 1

C Flute • Mallets
C Clarinet

B \flat Clarinet
Cornet 1

E \flat Alto Sax 1

f

(Clarinet 8va)

PART 2

B \flat Clarinet
Cornet 2

E \flat Alto Sax 2
Horn 1

F Horn 1

f

(Alto Sax 8va if possible)

PART 3

B \flat Clarinet 3

E \flat Alto Sax 3
Horn 2

B \flat Tenor Sax, Trb.
Bar 1

F Horn 2

C Trombone
Baritone 1

f

(Alto sax 8va if possible)

(Tensax 8va if possible)

PART 4

C Trombone
Baritone 2,
String Bass

C Bases

E \flat Baritone Sax
E \flat Bass

B \flat Bass Clarinet
B \flat Trb, Bar, Bass

B \flat E \flat F Gm E \flat B \flat

BD

Drum Set

f

Percussion



PART 1

C Fl/Mal/
C Cl

B \flat Cl/Cnt 1

B \flat Alto Sax 1

PART 2

B \flat Cl/Cnt 2

E \flat Asx 2/
Hn 1

F Horn 1

PART 3

B \flat Clarinet 3

E \flat Asx 3/
Hn 2

B \flat Tsx/
Trb, Bar 1

F Horn 2

C Trb/Bar 1

PART 4

C Trb/Bar 2
Str B

C Basses

E \flat Bsx/Bs

B \flat Bcl/Trb,
Bar, B \flat Bs

Drum Set

Perc.

Tambourin

f

10

PART 1

C Fl/Mal/
C Cl

Musical staff for C Fl/Mal/C Cl with notes and rests.

B♭ Cl/Cnt 1

Musical staff for B♭ Cl/Cnt 1 with notes and rests.

B♭ Alto Sax 1

Musical staff for B♭ Alto Sax 1 with notes and rests.

PART 2

B♭ Cl/Cnt 2

Musical staff for B♭ Cl/Cnt 2 with notes and rests.

mf

E♭ Asx 2/
Hn 1

Musical staff for E♭ Asx 2/Hn 1 with notes and rests.

mf

F Horn 1

Musical staff for F Horn 1 with notes and rests.

mf

PART 3

B♭ Clarinet 3

Musical staff for B♭ Clarinet 3 with notes and rests.

mf

E♭ Asx 3/
Hn 2

Musical staff for E♭ Asx 3/Hn 2 with notes and rests.

mf

B♭ Tsx/
Trb, Bar 1

Musical staff for B♭ Tsx/Trb, Bar 1 with notes and rests.

mf

F Horn 2

Musical staff for F Horn 2 with notes and rests.

mf

C Trb/Bar 1

Musical staff for C Trb/Bar 1 with notes and rests.

mf

PART 4

C Trb/Bar 2
Str B

Musical staff for C Trb/Bar 2/Str B with notes and rests.

mf

B♭ B♭sus B♭ B♭sus B♭ B♭ B♭sus Cm B♭/D

C Basses

Musical staff for C Basses with notes and rests.

E♭ Bsx/Bs

Musical staff for E♭ Bsx/Bs with notes and rests.

B♭ Bcl/Trb,
Bar, B♭ Bs

Musical staff for B♭ Bcl/Trb, Bar, B♭ Bs with notes and rests.

Drum Set

Drum set notation with 'x' marks and dynamic markings.

Claves

Perc.

Percussion notation for Claves.

PART 1
C Fl/Mal/
C Cl

B \flat Cl/Cnt 1

H \flat Alto Sax 1

PART 2
B \flat Cl/Cnt 2

E \flat Asx 2/
Hn 1

F Horn 1

PART 3
B \flat Clarinet 3

E \flat Asx 3/
Hn 2

B \flat Tsx/
Trb, Bar 1

F Horn 2

C Trb/Bar 1

PART 4
C Trb/Bar 2
Str B

C Bases

E \flat Bsx/Bs

B \flat Bcl/Trb,
Bar, B \flat Bs

Drum Set

Perc.

PART 1

C Fl/Mal/
C Cl

Musical staff for C Fl/Mal/C Cl

B♭ Cl/Cnt 1

Musical staff for B♭ Cl/Cnt 1

Hb Alto Sax 1

Musical staff for Hb Alto Sax 1

PART 2

B♭ Cl/Cnt 2

Musical staff for B♭ Cl/Cnt 2

E♭ Asx 2/
Hn 1

Musical staff for E♭ Asx 2/Hn 1

F Horn 1

Musical staff for F Horn 1

PART 3

B♭ Clarinet 3

Musical staff for B♭ Clarinet 3

E♭ Asx 3/
Hn 2

Musical staff for E♭ Asx 3/Hn 2

B♭ Trsx/
Trb, Bar 1

Musical staff for B♭ Trsx/Trb, Bar 1

F Horn 2

Musical staff for F Horn 2

C Trb/Bar 1

Musical staff for C Trb/Bar 1

PART 4

C Trb/Bar 2

Musical staff for C Trb/Bar 2

Str B

C Basses

Musical staff for C Basses

E♭ Bsx/Bs

Musical staff for E♭ Bsx/Bs

B♭ Bcl/Trb,
Bar, B♭ Bs

Musical staff for B♭ Bcl/Trb, Bar, B♭ Bs

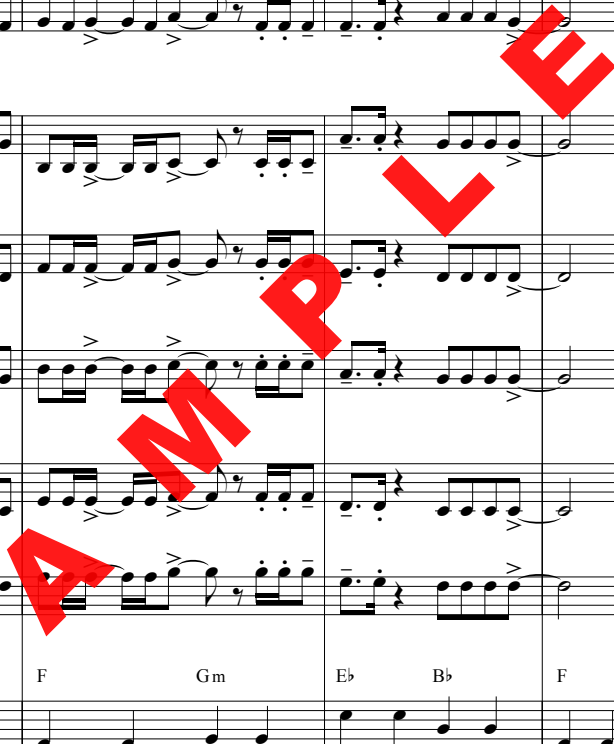
Drum Set

Musical staff for Drum Set

Tamb

Perc.

Musical staff for Tamb and Perc.



PART 1

C Fl/Mal/
C Cl

B \flat Cl/Cnt 1

E \flat Alto Sax 1

PART 2

B \flat Cl/Cnt 2

E \flat Asx 2/
Hn 1

F Horn 1

PART 3

B \flat Clarinet 3

E \flat Asx 3/
Hn 2

B \flat Tsx/
Trb, Bar 1

F Horn 2

C Trb/Bar 1

PART 4

C Trb/Bar 2
Str B

C Basses

E \flat Bsx/Bs

B \flat Bcl/Trb,
Bar, B \flat Bs

Drum Set

Perc.

F C A \flat Gm/D F E \flat Gm E \flat B \flat

PART 1

C Fl/Mal/
C Cl

Musical notation for Part 1, Flute/Malinet/Clarinet 1. Measure 30 is marked with a '30' above the staff. The notation includes rests and melodic lines with accents.

B \flat Cl/Cnt 1

Musical notation for Part 1, B-flat Clarinet/Contrabass 1. Measure 30 is marked with a '30' above the staff. The notation includes rests and melodic lines with accents.

E \flat Alto Sax 1

Musical notation for Part 1, E-flat Alto Saxophone 1. Measure 30 is marked with a '30' above the staff. The notation includes rests and melodic lines with accents.

PART 2

B \flat Cl/Cnt 2

Musical notation for Part 2, B-flat Clarinet/Contrabass 2. Measure 30 is marked with a '30' above the staff. The notation includes rests and melodic lines with accents and a *mf* dynamic marking.

E \flat Asx 2/
Hn 1

Musical notation for Part 2, E-flat Alto Saxophone 2/Horn 1. Measure 30 is marked with a '30' above the staff. The notation includes rests and melodic lines with accents and a *mf* dynamic marking.

F Horn 1

Musical notation for Part 2, F Horn 1. Measure 30 is marked with a '30' above the staff. The notation includes rests and melodic lines with accents and a *mf* dynamic marking.

PART 3

B \flat Clarinet 3

Musical notation for Part 3, B-flat Clarinet 3. Measure 30 is marked with a '30' above the staff. The notation includes rests and melodic lines with accents and a *mf* dynamic marking.

E \flat Asx 3/
Hn 2

Musical notation for Part 3, E-flat Alto Saxophone 3/Horn 2. Measure 30 is marked with a '30' above the staff. The notation includes rests and melodic lines with accents and a *mf* dynamic marking.

B \flat Trsx/
Trb, Bar 1

Musical notation for Part 3, B-flat Trumpet/Saxophone/Trumpet Baritone 1. Measure 30 is marked with a '30' above the staff. The notation includes rests and melodic lines with accents and a *mf* dynamic marking.

F Horn 2

Musical notation for Part 3, F Horn 2. Measure 30 is marked with a '30' above the staff. The notation includes rests and melodic lines with accents and a *mf* dynamic marking.

C Trb/Bar 1

Musical notation for Part 3, C Trumpet/Baritone 1. Measure 30 is marked with a '30' above the staff. The notation includes rests and melodic lines with accents and a *mf* dynamic marking.

PART 4

C Trb/Bar 2
Str B

Chord chart for Part 4, C Trumpet/Baritone 2/Strat Bass. Chords listed: Eb, G7, F, B \flat , B \flat sus, B \flat , B \flat sus, B \flat , B \flat sus. Measure 30 is marked with a '30' above the staff.

C Basses

Musical notation for Part 4, C Basses. Measure 30 is marked with a '30' above the staff. The notation includes rests and melodic lines with accents.

E \flat Bsx/Bs

Musical notation for Part 4, E-flat Bass Saxophone/Bass. Measure 30 is marked with a '30' above the staff. The notation includes rests and melodic lines with accents.

B \flat Bcl/Trb,
Bar, B \flat Bs

Musical notation for Part 4, B-flat Bass Clarinet/Trumpet Baritone/Bass. Measure 30 is marked with a '30' above the staff. The notation includes rests and melodic lines with accents.

Drum Set

Drum set notation for Part 4. Measure 30 is marked with a '30' above the staff. The notation includes a double bar line with a slash and a 2/4 time signature.

Perc.

Percussion notation for Part 4. Measure 30 is marked with a '30' above the staff. The notation includes rests and melodic lines with accents.



PART 1

C Fl/Mal/
C Cl

B \flat Cl/Cnt 1

E \flat Alto Sax 1

PART 2

B \flat Cl/Cnt 2

E \flat Asx 2/
Hn 1

F Horn 1

PART 3

B \flat Clarinet 3

E \flat Asx 3/
Hn 2

B \flat Tsx/
Trb, Bar 1

F Horn 2

C Trb/Bar 1

PART 4

C Trb/Bar 2
Str B

C Basses

E \flat Bsx/Bs

B \flat Bcl/Trb,
Bar, B \flat Bs

Drum Set

Perc.

35

B \flat B \flat B \flat Cm B \flat /D E \flat F Cm B \flat /D F_{sus}

2

+

PART 1

C Fl/Mal/
C Cl

B \flat Cl/Cnt 1

E \flat Alto Sax 1

PART 2

B \flat Cl/Cnt 2

E \flat Asx 2/
Hn 1

F Horn 1

PART 3

B \flat Clarinet 3

E \flat Asx 3/
Hn 2

B \flat Tsx/
Trb, Bar 1

F Horn 2

C Trb/Bar 1

PART 4

C Trb/Bar 2
Str B

C Basses

E \flat Bsx/Bs

B \flat Bcl/Trb,
Bar, B \flat Bs

Drum Set

Perc.

f

f

f

f

f

f

Cm $\text{E}\flat$ D F E \flat B \flat F Gm

PART 1

C Fl/Mal/
C Cl

B \flat Cl/Cnt 1

E \flat Alto Sax 1

PART 2

B \flat Cl/Cnt 2

E \flat Asx 2/
Hn 1

F Horn 1

PART 3

B \flat Clarinet 3

E \flat Asx 3/
Hn 2

B \flat Tsx/
Trb, Bar 1

F Horn 2

C Trb/Bar 1

PART 4

E \flat F Eb B \flat F Gm A \flat

C Trb/Bar 2
Str B

C Basses

E \flat Bsx/Bs

B \flat Bcl/Trb,
Bar, B \flat Bs

Drum Set

Perc.