



LOOK **AMAZING!**

SOUND **AMAZING!**

FEEL **AMAZING!**

Welcome to the British Drum Co.

We are driven by our passion to create the finest drums and percussion instruments for musicians who recognise and value the highest of standards.

We select the highest quality timbers before handcrafting our shells in our cold-moulding process to maintain the sonic integrity of the wood. Our Palladium hardware graces each drum and every single detail is checked with a forensic accuracy before our exacting quality control signs off the products prior to delivery to our customers.

Our philosophy is based on a rich heritage of British drum-building craftsmanship. We wholeheartedly embrace the timeserved techniques and traditions that are acknowledged to contribute to the finest examples of the craft. However, we are a company that continually looks to the future, placing innovation right at the heart of our brand in order to develop instruments that look amazing, sound amazing and make you feel amazing.



Keith Keough

CEO British Drum Co.



LEGEND

SERIES



LOOK **AMAZING!** SOUND **AMAZING!** FEEL **AMAZING!**

www.britishdrumco.com





THE MIGHTY SOUND OF **BIRCH**

Legend Series - these drums absolutely have the right name! The **Legend Series** speaks with awesome power and projection in any musical situation. The secret lies in the construction of our drums. **Legend Series** drums are handcrafted using our unique cold-press moulding with 100% Scandinavian Birch, cross laminated into a 6mm thick shell.

Legend's super-strong shells are precision-cut with 45 degree bearing edges and finished with 2ply reinforcement rings. The results are astounding - naturally lower fundamental tones with immediate attack and deep, controlled sustain.

The versatility of **Legend Series** is equally impressive. High tuning

reveals a crisp delicacy that responds easily to subtle playing, whilst lower tunings bring out the deep punchiness of the bass drum and toms possess an unparalleled low-end growl. These drums sound rich and resonant. However you play - whether on stage or in the studio, **Legend Series** inspires you to play with real passion.

Legend Snare Drum



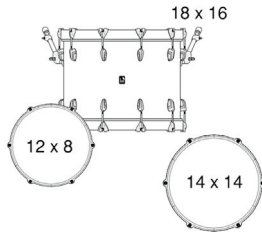
Available separately is a matching snare drum in either 14 x 5.5 or 14 x 6.5

LEGEND SERIES

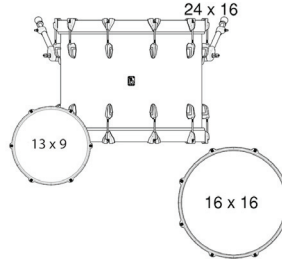


Available Shell Pack Configurations

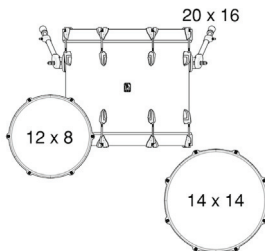
Legend Club 18 - 18 12 14



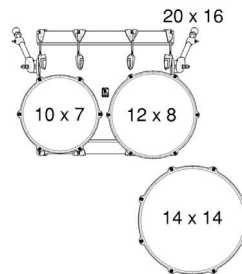
Legend Club 24 - 24 13 16



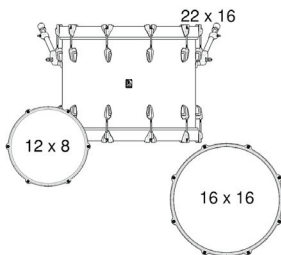
Legend Club 20 - 20 12 14



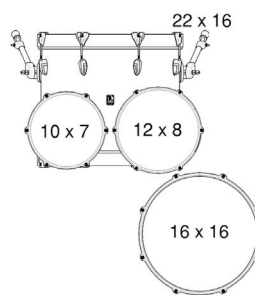
Legend Fusion 20 - 20 10 12 14



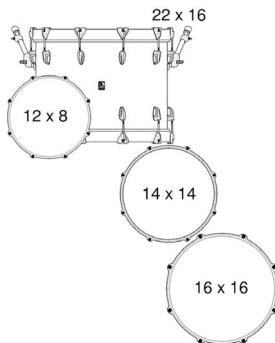
Legend Club 22 - 22 12 16



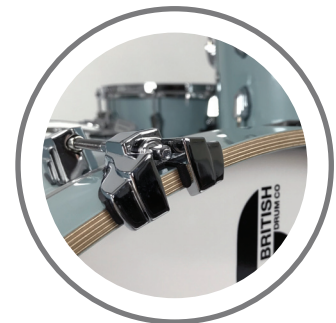
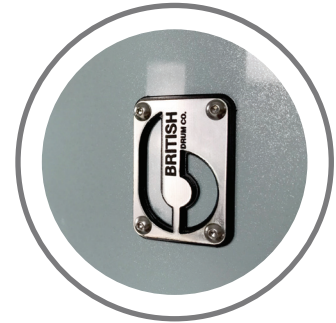
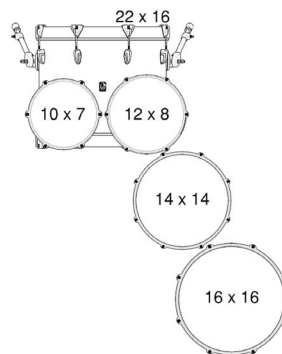
Legend Fusion 22 - 22 10 12 16



Legend Rock 22 - 22 12 14 16



Legend RockFusion 22 - 22 10 12 14 16



AVAILABLE SINGLE DRUMS

- Rack Toms** 6 x 6 • 8 x 7 • 10 x 7
12 x 8 • 13 x 9 • 14 x 10
- Floor Toms** 14 x 14 • 16 x 16 • 18 x 16
- Bass Drums** 18 x 16 • 20 x 16 • 22 x 16
24 x 16 • 26 x 16
- Gong Drums** 18 x 8 • 20 x 8 • 22 x 8
- Snare Drums** 14 x 5.5 • 14 x 6.5



LOOK **AMAZING!** SOUND **AMAZING!** FEEL **AMAZING!**

LEGEND SERIES

Satin Oil Finishes

Available in four standard Satin Oil finishes that have been hand rubbed to bring out the beautiful natural lustre of the wood finish. The final touch of detail is in the Finish Matching™ reinforcement rings.

Carnaby Slate



Buckingham Scarlett



Whitechapel



Kensington Knight



Exo-Tone™ Finishes

Our unique Cold Press Moulding™ technique enables us to place the outer finish laminate into the mould at the outset of the shell-building process. Our process ensures the shell is the correct size unlike other companies who choose to attach the wrap after the shell has been built.

Skye Blue



Night Skye



Piccadilly White



Winchester Grey



Cold-Press Moulding

Cold-press moulding is the key to the British Drum Co. signature sound. As the name suggests, it is a procedure that eliminates the use of heat in the shell building process.

Worth the wait

Drawing on our rich experience in woodworking and drum shell manufacture, we believe it is the best way to handcraft our drums. Cold-press moulding maintains the optimum sonic qualities of the wood which would otherwise be compromised by the addition of a heated process. It does mean our drums take a little longer than most to create, but we believe this gentle, crafted approach is rewarded by a far superior tone. The resulting sound is well worth the wait.

The Perfect Fit

Every drum is hand built by skilled craftsmen. The shells are precision-cut to achieve the desired thickness. When our craftsmen hear the 'click' of each ply accurately fitting into place, we know we have achieved the perfect fit. Cold-press moulding is the heart of the British Drum Co. signature sound.

British Drum Co. drums are regarded as the finest shells by Rhythm Magazine.

"The shells are flawless resulting in a versatile professional sound."

British Drum Co.

Unit 2, Haigh Avenue, Whitehill Industrial Estate, Stockport SK4 1NU

Sales: +44 (0) 161 804 4723
Email: info@britishdrumco.com

www.britishdrumco.com

LOOK **AMAZING!**

SOUND **AMAZING!**

FEEL **AMAZING!**



LOUNGE

SERIES



LOOK **AMAZING!** SOUND **AMAZING!** FEEL **AMAZING!**

www.britishdrumco.com





THE COMPLEX SOUND OF **MAHOGANY**

Lounge Series is our range of drums designed to deliver warm and complex tones, evocative of the most revered vintage drum sounds.

Lounge Series shells are handcrafted using our unique cold-press moulding with 9ply

Mahogany and Scaninavian Birch, cross laminated to form a super-strong, thin shell only 5.5mm thick. Finished with an inner veneer of Mahogany and 30 degree round-over bearing edges, The **Lounge Series** presents a rich complex warmth with defined projection and power.

Lounge Series offers incredible versatility. The tuning range is wide and rewarding - tune high for a responsive warm brightness or tune down to achieve deep, rich, low tones - inspiring you to play creatively and with ease in any musical situation.

Lounge Snare Drum



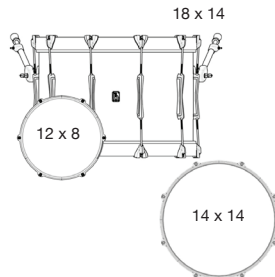
Available separately is a matching snare drum in either 14 x 5.5 or 14 x 6.5

LOUNGE SERIES

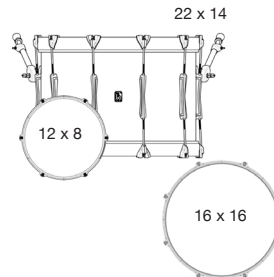


Available Shell Pack Configurations

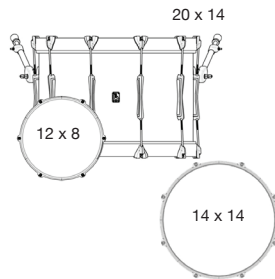
Lounge Club 18 - 18 12 14



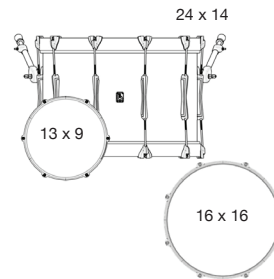
Lounge Club 22 - 22 12 16



Lounge Club 20 - 20 12 14



Lounge Club 24 - 24 13 16



AVAILABLE SINGLE DRUMS

- Rack Toms** 10 x 7 • 12 x 8 • 13 x 9 • 14 x 10
- Floor Toms** 14 x 14 • 16 x 16 • 18 x 16
- Bass Drums** 18 x 14 • 20 x 14 • 22 x 14 • 24 x 14 • 26 x 14
- Snare Drums** 14 x 5.5 • 14 x 6.5



TOMSPRING™ SET YOUR TOMS **FREE!**

Tomspring™ is a flexible interface between your tom and snare stand. Engineered from Delrin and designed to resonate instantly at the same frequency as your drum, these little beauties will keep your tom resonating fuller and for longer.

Lounge Series drum kits come complete with Tomspring™ fitted to the rack tom.

LOOK **AMAZING!**

SOUND **AMAZING!**

FEEL **AMAZING!**



LOUNGE SERIES

Satin Oil Finishes

Available in two standard Satin Oil finishes that have been hand rubbed to bring out the beautiful natural lustre of the wood finish.

Kensington Crown



Wiltshire White



Exo-Tone™ Finishes

Our unique Cold Press Moulding™ technique enables us to place the outer finish laminate into the mould at the outset of the shell-building process. Our process ensures the shell is the correct size unlike other companies who choose to attach the wrap after the shell has been built.

Iron Bridge



Windermere Pearl



Cold-Press Moulding

Cold-press moulding is the key to the British Drum Co. signature sound. As the name suggests, it is a procedure that eliminates the use of heat in the shell building process.

Worth the wait

Drawing on our rich experience in woodworking and drum shell manufacture, we believe it is the best way to handcraft our drums. Cold-press moulding maintains the optimum sonic qualities of the wood which would otherwise be compromised by the addition of a heated process. It does mean our drums take a little longer than most to create, but we believe this gentle, crafted approach is rewarded by a far superior tone. The resulting sound is well worth the wait.

The Perfect Fit

Every drum is hand built by skilled craftsmen. The shells are precision-cut to achieve the desired thickness. When our craftsmen hear the 'click' of each ply accurately fitting into place, we know we have achieved the perfect fit. Cold-press moulding is the heart of the British Drum Co. signature sound.

British Drum Co. drums are regarded as the finest shells by Rhythm Magazine.

"The shells are flawless resulting in a versatile professional sound."

British Drum Co.

Unit 2, Haigh Avenue, Whitehill Industrial Estate, Stockport SK4 1NU

Sales: +44 (0) 161 804 4723
Email: info@britishdrumco.com

www.britishdrumco.com

LOOK **AMAZING!**

SOUND **AMAZING!**

FEEL **AMAZING!**



WILD ETIMOE

LIMITED EDITION



LOOK **AMAZING!** SOUND **AMAZING!** FEEL **AMAZING!**

www.britishdrumco.com





THE NATURAL BEAUTY OF **WOOD**

The **Wild Etimoe** Limited Edition 4-piece Lounge Series kit is handbuilt from 9 ply mahogany and birch to deliver beautifully warm, vintage-style tones.

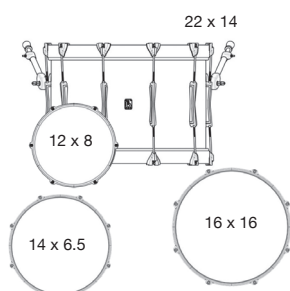
Lovingly crafted and adorned in a beautiful hand selected **Wild Etimoe**, each kit is individually numbered and manufactured in our UK factory to a limited quantity for 2018.

The rich brown **Wild Etimoe** veneer has a striking wild sapwood running throughout its leaf and is finished with a hand rubbed oil to a deep lustre before being embellished with our renowned Palladium hardware.

The **Wild Etimoe** includes a matching 14" x 6.5" snare drum and sounds as amazing as it looks. This phenomenal kit is quite simply, a work of art!

Available Shell Pack Configuration

Wild Etimoe
22 12 16, 14 Snare



Cold-Press Moulding

Cold-press moulding is the key to the British Drum Co. signature sound. As the name suggests, it is a procedure that eliminates the use of heat in the shell building process.

Worth the wait

Drawing on our rich experience in woodworking and drum shell manufacture, we believe it is the best way to handcraft our drums. Cold-press moulding maintains the optimum sonic qualities of the wood which would otherwise be compromised by the addition of a heated process. It does mean our drums take a little longer than most to create, but we believe this gentle, crafted approach is rewarded by a far superior tone. The resulting sound is well worth the wait.

The Perfect Fit

Every drum is hand built by skilled craftsmen. The shells are precision-cut to achieve the desired thickness. When our craftsmen hear the 'click' of each ply accurately fitting into place, we know we have achieved the perfect fit. Cold-press moulding is the heart of the British Drum Co. signature sound.

British Drum Co. drums are regarded as the finest shells by Rhythm Magazine.

"The shells are flawless resulting in a versatile professional sound."

British Drum Co.

Unit 2, Haigh Avenue, Whitehill Industrial Estate, Stockport SK4 1NU

Sales: +44 (0) 161 804 4723
Email: info@britishdrumco.com

www.britishdrumco.com

LOOK **AMAZING!**

SOUND **AMAZING!**

FEEL **AMAZING!**



THE IMP

SERIES



LOOK **AMAZING!** SOUND **AMAZING!** FEEL **AMAZING!**

www.britishdrumco.com





THE **IMP** PORTABILITY, POWER, AND **PROJECTION...**

It may look small, but **The Imp** packs a punch way above its weight. This professional kit is no lightweight, offering a level of power and projection to rival the volume of a much larger kit.

Beautifully finished, inside and out in our luxurious Kensington Knight finish, **The Imp** kit is comprised of a 16" x 10" bass drum, 13" x 10"

floor tom and a 10" x 6" rack tom, with the option to add a 12" x 5.5" matching snare drum. **The Imp** is handcrafted using our unique cold-press moulding system to the same exacting standards as our Legend and Lounge series kits.

Potent, powerful and portable, **The Imp** is the compact professional kit that delivers a huge sound.

THE **IMP** SNARE DRUM

Available to purchase separately is a 12 x 5.5 matching specification snare drum.



British Drum Co.

Unit 2, Haigh Avenue, Whitehill Industrial Estate, Stockport SK4 1NU

Sales: +44 (0) 161 804 4723
Email: info@britishdrumco.com

www.britishdrumco.com

LOOK **AMAZING!**

SOUND **AMAZING!**

FEEL **AMAZING!**



EMBRACE YOUR
DARK SIDE



MERLIN SNARE



LOOK **AMAZING!** SOUND **AMAZING!** FEEL **AMAZING!**

www.britishdrumco.com



MERLIN SNARE



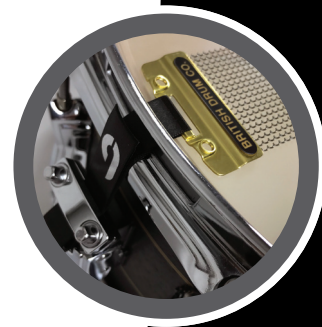
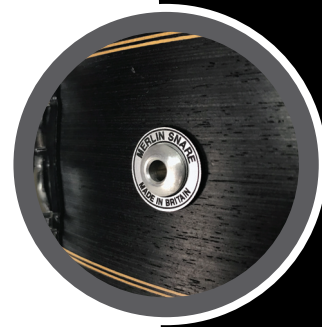
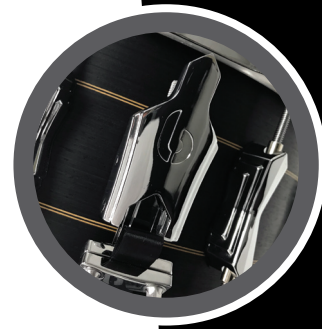
Critically acclaimed by players and pundits alike, the Merlin's reputation is assured, with commendations from The Music Industry Association and an impressive 5-star review in Rhythm Magazine.

If you are looking for a snare drum that you can be certain will deliver the goods in all musical situations, then the Merlin is the snare drum for you.

Like the world-class Rolls Royce aviation engine which inspired it, the Merlin excels in delivering outstanding performance precisely when it matters. When the occasion demands, Merlin will not let you down.

This beautiful instrument is handcrafted utilising a 20ply shell of alternating vertical and horizontal veneers - maple for focus and warmth, and birch for brightness and projection. The shell is then precision finished using a black tulip veneer and detailed with a stylish inlaid double pinstripe of maple. The Merlin is available in two options - 14" x 5.5" and 14" x 6.5" - each with its own characteristic voice offering a wide variety of sonic possibilities.

The Merlin willingly reveals its musical versatility when you start to play. The responsiveness is uncompromising however you tension the heads. Tune down for rich, warm resonance to create that classic dry, funkier sound, or tighten up the tension for a bright, clear attack. From both extremes, and with everything in between, Merlin allows you to hear and feel every subtlety of your playing.



www.britishdrumco.com

British Drum Co.

Unit 2, Haigh Avenue,
Whitehill Industrial Estate,
Stockport SK4 1NU

Sales: +44 (0) 161 804 4723
Email: info@britishdrumco.com

14" x 5.5", 14" x 6.5"

Remo USA heads

2.3 mm triple
flange hoops

45° bearing edges

20ply, 10.5mm thick
Maple and Birch shell

Palladium lugs

Gold logo badge

Palladium strainer

Brass snare wires

LOOK **AMAZING!**

SOUND **AMAZING!**

FEEL **AMAZING!**



RHYTHM & BLUES

BLUEBIRD SNARE



LOOK **AMAZING!** SOUND **AMAZING!** FEEL **AMAZING!**

www.britishdrumco.com

**MADE IN
BRITAIN**

BLUEBIRD SNARE



At the heart of your kit you need a snare drum you can depend on, an instrument that responds to every nuance of your playing, whatever your style. Bluebird is the snare drum that sings, from a whisper to a scream, giving you the freedom to express your music the way you intended. From the acoustic demands of a club gig to the amplified roar of the concert stage, Bluebird will always respond to your playing style.

A classic in every sense, Bluebird's 14" x 6" chrome over brass shell forms a foundation to the resonant character of this drum, with a stylish double bead to focus the sound. The art-deco inspired Palladium hardware is elegance defined, but is also designed to optimise the connection between the shell and the heads, creating a snare sound that is inherently more musical than metallic.

The exacting build quality of Bluebird delivers superb sensitivity across the entire surface of the batter head, meaning sticking will be precise and crisp, rimshots will be deep and defined, side-sticking will be tight and cutting. This level of sensitivity is highlighted when played to extremes - delicate brushwork is rich and expressive, whilst playing hard reveals the confidence of this drum. Clear, defined, articulate rolls cut through at every level. This drum responds easily to every demand you make - no need to labour your playing as Bluebird cuts through without you ever breaking a sweat.

Bluebird is the snare drum you can depend on.
It's the snare drum you've been waiting for.



www.britishdrumco.com

British Drum Co.

Unit 2, Haigh Avenue,
Whitehill Industrial Estate,
Stockport SK4 1NU

Sales: +44 (0) 161 804 4723
Email: info@britishdrumco.com

LOOK **AMAZING!**
SOUND **AMAZING!**
FEEL **AMAZING!**



14" x 6"

Remo USA heads

2.3 mm triple
flange hoops

1.2mm double
beaded brass shell

Palladium lugs

Blue logo badge

Palladium strainer

Brass snare wires

GO BIG

BIGSOFTY SNARE



LOOK **AMAZING!** SOUND **AMAZING!** FEEL **AMAZING!**

www.britishdrumco.com



BIGSOFTY SNARE



When you need your snare drum to deliver deep, warm and mellow tones, your first choice has to be the Big Softy.

This drum is designed to do all the hard work so you don't have to. Recognised and loved by professionals as their "go to" studio snare drum, Big Softy also performs magnificently onstage, from the intimacy of a club jazz gig to the bombast of a full-blown arena rock show.

Handcrafted using cherry inner and outer veneers, Big Softy's 14" x 6.5" shell encircles a central core of kiln-dried Ochroma. This surprisingly light, open-density hardwood possesses a micro-pore grain structure which actively filters out higher frequencies, giving you a massive range of tonal possibilities. Big Softy is designed to enable higher batter head tension for a truly responsive rebound and still achieve bigger, warmer and funkier sounds without the need to detune.

Big Softy articulates every stroke so your playing is efficient and effortless whilst creating huge sounding backbeats.

Whether you want that classic "fatback" snare or a more contemporary complex tone, Big Softy is the drum for you.



www.britishdrumco.com

British Drum Co.

Unit 2, Haigh Avenue,
Whitehill Industrial Estate,
Stockport SK4 1NU

Sales: +44 (0) 161 804 4723
Email: info@britishdrumco.com

LOOK **AMAZING!**
SOUND **AMAZING!**
FEEL **AMAZING!**



14" x 6.5"

Remo USA heads

2.3 mm triple
flange hoops

9ply, Ochroma
and Cherry shell

Palladium lugs

Big Softy logo badge

Palladium Mk1 strainer

Brass snare wires



+44 (0) 161 804 4722

info@britishdrumco.com

www.britishdrumco.com

Unit 2, Haigh Avenue, Whitehill Industrial Estate,
Stockport SK4 1NU United Kingdom