

# MAG<sup>LE</sup>AZINE

N°9

2023



「bam」  
l'original



# CONTACT

## **BAM EUROPE** (Headquarters & Production)

BAM SAS  
Rue de la Vignerie  
14160 Dives-sur-Mer  
France  
Tel: +33 (0) 231 24 64 64  
Email : bam.cases@bamcases.com

## **BAM US** (Sales Office)

BAM France USA  
143 Lawrence Street  
Hackensack NJ 07601  
U.S.A.  
Tel: +1 201 342 7700  
Email: usa@bamcases.com

## **BAM THAILAND** (Production & Sales Office)

BAM SMART Cases Ltd.  
Factory : Cases and Covers Co., Ltd.  
99/51 - Moo 5  
T. Bangnumjued – A. Muang  
SAMUTSAKHON – 74000  
Thailand  
Tel: +66 (0) 34 44 67 86  
Email : bamthailand@bamcases.com

## **BAM CHINA** (Sales Office)

BAM Cases and Covers (Shenzhen) Ltd.  
4025 Shipping Comprehensive,  
Bd 1 Bd 7 Layer B771  
Luohu District, Shenzhen  
China  
Tel: +861 3902 6992 45  
Email: shumei.wu@bamcases.com  
tingting.chan@bamcases.com

## **BAM RUSSIA** (Sales Office)

BAM Cases LLC.  
122-1-31, Birulevskaya St.,  
Moscow, 115404,  
Russia  
Tel: +7 (967) 254 80 50  
Email: elena.safonova@bamcases.com

## **BAM KOSOVO** (Production)

GOETZ ENTERPRISES SAS - Dega në Kosovë  
Rr. Magjistratja Podujevë - Merdare,  
Pn 11000, Podujevë,  
Kosovë  
Tel: +383 49 570 590  
Email: bamkosovo@bamcases.com

## **BAM BRAZIL** (Sales Office)

BAM Cases Comércio e Serviços LTDA  
Rua Capote Valente, 655 – cj.52  
Pinheiros  
SÃO PAULO-S, 05409-002  
BRAZIL  
Tel: +55 11 3064 8574  
and: +55 11 972060253  
Email: jennifer.vieira@bamcases.com





- ROBIN WILLIAMS -

„You know what music is?  
God's little reminder that there's  
something else besides us in this universe;  
harmonic connection between all living  
beings, every where, even the stars.“

— ” —

Yours, Robert & Katja Goetz

「bam」  
| original |

# What's New?

# 1

**SKY**

**LE PLUS LÉGER POSSIBLE !**

Notre nouvel étui de violoncelle, léger et extrêmement performant !

**AS LIGHT AS IT CAN BE!**

The new Cello case with less weight, for an impressive performance!



**PAGE  
44**



**SLIM CELLO CASE**



# IKAT NASHVILLE

## NOUVELLE ÉDITION LIMITÉE : IKAT NASHVILLE

Nous ajoutons à cette gamme déjà populaire un nouveau modèle au look très différent. Choisissez votre préféré... **votre instrument sera de toutes façons en sécurité !**

### A NEW TWIST ON THE NASHVILLE CASES! IKAT NASHVILLE LIMITED EDITION:

We expanded our popular Nashville line with new design changes! Pick your personal favorite.... **And by all means, your instrument is safe.**



1-TRUMPET GIGBAG



CLASSICAL  
GUITAR GIGBAG



VIOLIN CASE

SAX GIGBAG



IKAT STRAPS





## ÉTUI ABS CLASSIC POUR TROMPE DE CHASSE

Avis à tous les musiciens ! Enfin, nous pouvons vous présenter votre nouvel écrin pour votre instrument.

**Faites votre choix parmi les différentes couleurs disponibles : rouge, gris ou noir !**

### CLASSIC ABS CASE FOR HUNTING HORN

To all horn players! Finally, a new 'home' for your instrument!

**You can decide if it should be red, silver or black!**

**Your call!**

PAGE  
82





## STAGE

### PRÊTS À MONTER SUR SCÈNE ?

Nous sommes contents de vous présenter notre nouvel étui de clarinette dans la gamme STAGE ! **Disponible en noir Sabbath ou en gris Thunder !**

### READY TO STEP ON STAGE?

We are happy to introduce you to our new single clarinet case in the STAGE line! **Available in black Sabbath or grey Thunder!**



PAGE  
60

4

## BAM BACKPACK

ALL-IN-ONE FOR YOUR CLARINET CASE!

### Besoin d'un sac-à-dos pour votre étui BAM ?

Transporter votre étui, vos affaires, votre ordinateur portable, vos accessoires dans l'un de nos trois nouveaux modèles de sac-à-dos. **Différents styles sont disponibles dans les gammes suivantes : BAMTECH, PEAK, ou BAM FRANCE.**

### Need a travel backpack for your Bam case?

Ideal to fit your case, a laptop, clothes, or accessories. We designed three new backpack models with different functions and style! **Available in BAMTECH, PEAK or BAM FRANCE Classic line.**



PAGE  
168



BAMTECH



PEAK



BAM FRANCE

## CHANGE OF SHAPE

6

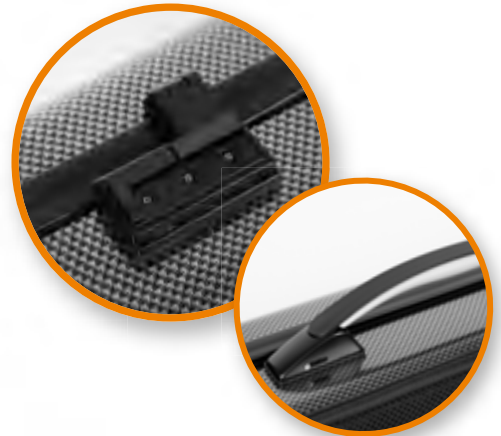


### MÉTAMORPHOSE

Venez découvrir notre nouvelle forme d'étuis pour violon et alto rectangulaire de la gamme HIGHTECH : finition noir carbone, tweed, silver carbone ou noir lazure et également dans la gamme PANTHER!

### CHANGE OF SHAPE

Discover the new Oblong HIGHTECH Violin or Viola case in the black carbon, silver carbon, tweed or black lazure finish, but also in the PANTHER line!



7

## PROTÉGEZ VOTRE FLÛTE

**CHOISISSEZ VOTRE HOUSSE PRÉFÉRÉE POUR VOTRE ÉTUI DE FLÛTE !**

Fonctionnel avec le modèle BAMTECH ou élégant avec le modèle en cuir véritable dans la gamme BAM FRANCE.



## COVER YOUR FLUTE

**TWO NEW OPTIONS TO FIND YOUR PERFECT MATCH FOR YOUR FLUTE CASE!**

Functional with BAMTECH design, or elegant with the classic real leather BAM FRANCE design!

---

「bam」  
l'original

&  
Alhambra  
GUITARRAS

**THE PERFECT FUSION**

Mixture of quality, experience and innovation

**LA FUSION PARFAITE**

Mélange de qualité, d'expérience et d'innovation





### CONCEPTION EXCLUSIVE

**La collaboration avec Alhambra Guitarras, fabricant prestigieux de guitares classiques, nous a permis de concevoir un produit qui éveillera vos sens.**

- Technique unique développée pour cet étui spécial, avec un logo Alhambra en relief sur le couvercle
- ABS et tissu thermoformés ensemble pour donner un look épuré
- Coussins en mousse injectée résistante offrant une excellente protection pour l'instrument
- Couleur rouge : le détail qui fait la différence.

### EXCLUSIVE DESIGN

**The collaboration with Alhambra Guitarras, prestigious manufacturer of classical guitars, has enabled us to create a product that will awaken your senses.**

- Unique technique developed for this special case showing a relief Alhambra logo on the lid
- ABS & fabric thermoformed together to give a clean look
- Resilient injected foam cushions providing a great protection for the instrument
- Red color: the detail that makes a big difference.

# Gigs by bam

VERSION 3.0

## THE FIRST GLOBAL SOCIAL NETWORK FOR MUSICIANS



- There was never a place where musicians from every background were able to connect in one place.
- That's why we created Gigs by BAM.
- An App which revolves around you as a musician, with powerful features!



## MUSIC BRINGS PEOPLE TOGETHER!

- Il n'y avait encore jamais eu d'endroit où pouvaient se réunir des musiciens de tous horizons!
- C'est exactement pour cette raison que nous avons créé l'application « Gigs By BAM ».
- Une application performante qui va graviter autour de votre activité de musicien !

# GIGS BY BAM!



## FUNCTION 1 - CONNECT

With the **CONNECT** function you can show people out there what you're up to, post photos and videos or announce important events.

La fonction **CONNECT** vous permet de faire part de votre actualité aux autres musiciens, en publiant des photos et des vidéos, et en annonçant des événements importants !

### GROUPS

Show people what you are up to!



- Create your own profile to show who you are and what you do.
- Créez votre propre profil pour vous présenter.

### CHAT

Chat with your mates!



- Chat with other Musicians directly, or together in a group.
- Chattez avec d'autres musiciens, en MP ou à plusieurs dans un groupe.

### GIGS

Organize your upcoming gigs!



- Turn on notifications and always know what's going on!
- Activez les notifications et soyez toujours au courant de ce qui se passe !

With the **GIGS** - Function you can be sure that your band life or the next meet-up in town is easily organized.

La fonction **GIGS** vous permet d'organiser les rencontres et l'agenda de votre groupe de musique.



# GIGS BY BAM!

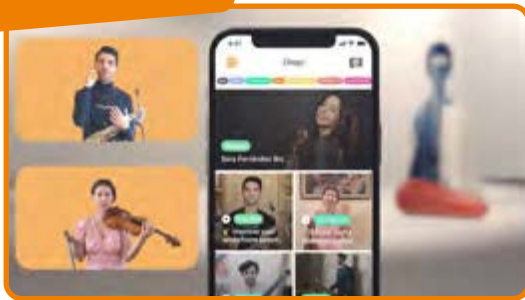


## FUNCTION 2 - STAGE

Keep up with news, tips and tricks in the music world with **STAGE**.

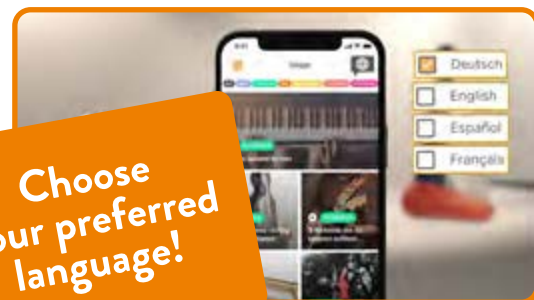
Suivez l'actualité musicale avec la fonction **STAGE** de l'application.

Learn from musicians!



- Learn from experienced musicians in tutorials or find new topics, which relate to you as a musician.
- Apprenez des plus grands en suivant leurs tutoriels. Ils partagent leurs trucs et astuces de musiciens !

Choose your preferred language!

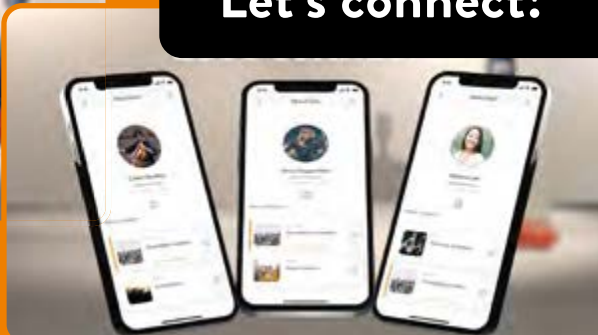


- Now you can even select your preferred language!
- Maintenant, vous pouvez même sélectionner votre langue préférée !

It's up to you!



Let's connect!



# GIGS BY BAM!



## FUNCTION 3 - TRACK

But we didn't stop there. Protecting your instruments is our passion, so we are taking every step possible to keep them safe, no matter where you are.

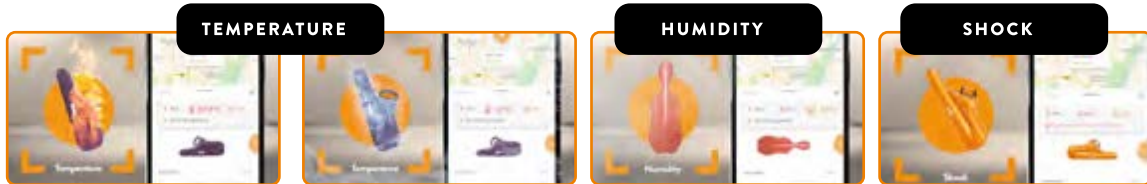
Mais ce n'est pas tout, notre application va un peu plus loin. Protéger les instruments, c'est notre passion, notre métier. Nous faisons tout pour que vos instruments soient parfaitement en sécurité dans nos étuis, où que vous soyez !

Keep track of your BAM case!



Don't get us wrong our cases ensure the highest grade of protection even in rough conditions. But with our tracking device inside your case, measuring all the important values you can keep a cool head at all times.

Ne nous méprenons pas, vos instruments sont parfaitement en sécurité grâce à nos étuis, et ce, quelles que soient les conditions. Mais, notre dispositif de « tracking » (dispositif qui permet de localiser votre étui), vous permettra en plus de gérer les conditions de transport et de stockage de votre instrument en surveillant ses données importantes (température, humidité, ...)

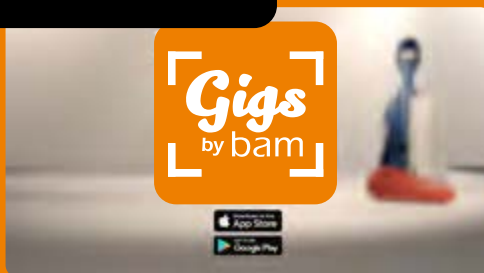


Not only do you know where your case is at all times, but you can optimize the way you transport and store instruments to ensure the highest grade of functionality when it's needed.

Non seulement vous saurez en permanence où se trouve votre instrument, mais en plus vous pourrez en prendre soin !

Download now!

In cooperation with



This - is  
Gigs by Bam!

AVAILABLE ON THE APP STORE  
AND GOOGLE PLAY

C'est ça l'application  
« Gigs by Bam » !

DISPONIBLE SUR APP STORE  
ET GOOGLE PLAY



# SOMMAIRE CONTENT

FIND YOUR CASE  
MORE EASILY  
WITH OUR NEW  
TABLE OF CONTENTS!

P. **44**  

---

SKY

## BAM CASES

### BAM LINES OVERVIEW APERÇU DE NOS GAMMES

18	OVERVIEW	A+
20	ARTISTO	BAMTECH
22	CABINE	CLASSIC
24	CREW	CUBE
26	FLIGHT COVERS	HIGHTECH
28	HOODIES	HOODIES FUNCTION
30	HOODIES SUBMARINE	LA DEFENSE
32	L'ETOILE	LEO
34	NASHVILLE	IKAT NASHVILLE <b>NEW</b>
36	NEW TREKKING	PANTHER
38	PEAK	PERFORMANCE
40	ST. GERMAIN	SHADOW
42	SHAMROCK	SIGNATURE
44	SKY <b>NEW</b>	SOFTPACK
46	STAGE	STYLUS
48	SUPREME HIGHTECH	SUPREME ICE
50	SUPREME L'OPERA	SUPREME ORCHESTRA
52	TREKKING	YOUNGSTER

### BAM CASES BY INSTRUMENT NOS ÉTUIS CLASSÉS PAR INSTRUMENTS

54	WIND CASES / VENTS
84	STRING CASES / CORDES
134	GUITAR CASES / GUITARES
152	CASES FOR TRADITIONAL CHINESE INSTRUMENTS / INSTRUMENTS TRADITIONNELS CHINOIS
156	BAM CONSERVATOIRE





P. **190**

---

**INSTAGRAM  
GUIDE**

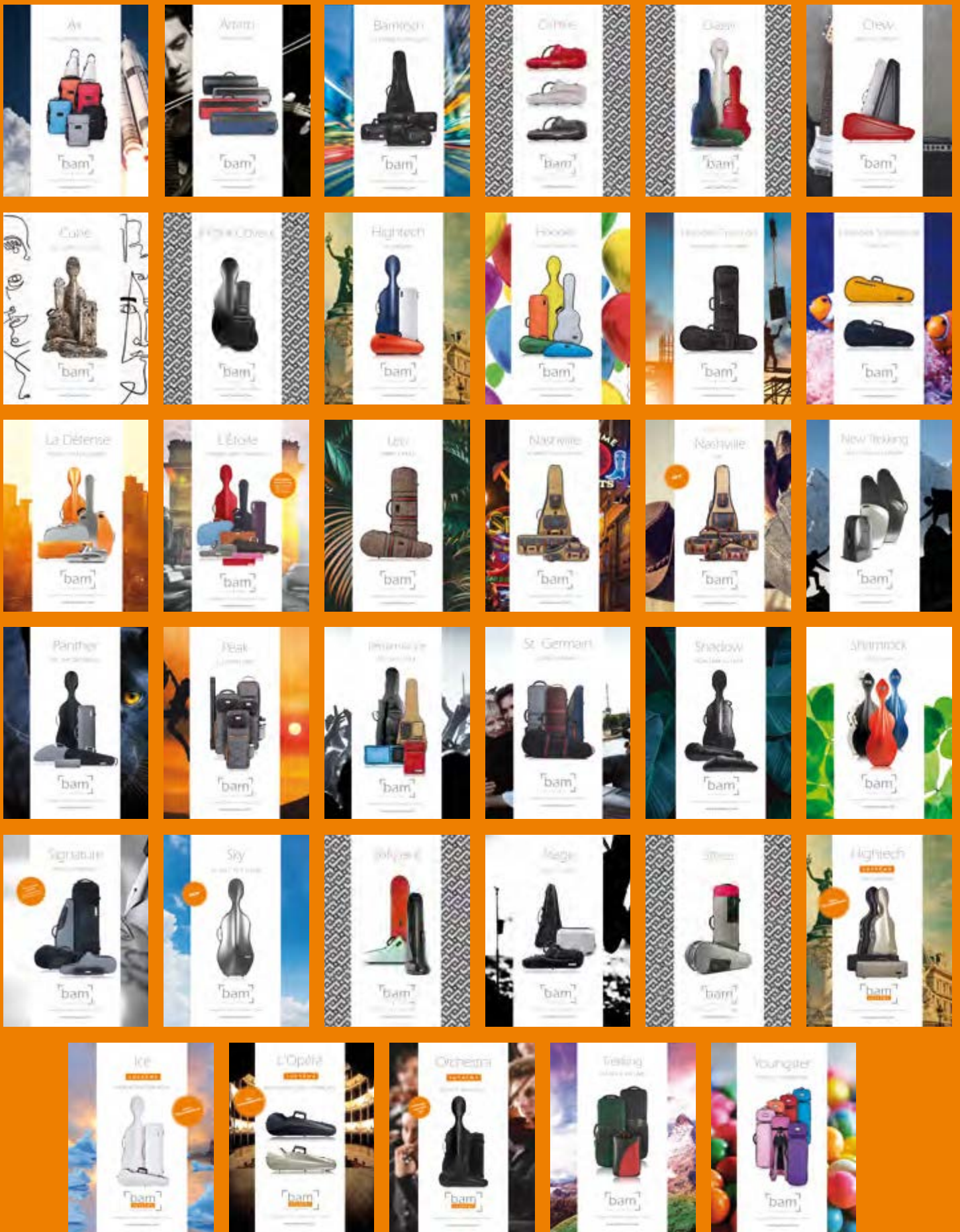
- 158 **MATERIALS & COLORS**
- 164 **BAM ACCESSOIRES**
- 176 **BAM FRANCE**
- 190 **INSTAGRAM GUIDE**
  
- 198 **JOIN US!**
- 199 **LEGAL NOTICE**

P. **35**

---

**IKAT  
NASHVILLE**







A+

THE ULTIMATE ADD ON



「bam」  
l'original

Designed by BAM in Normandie, France

[www.bamcases.com](http://www.bamcases.com)





# Artisto

SIMPLY CLASSIC



「bam」  
l'original

Designed by BAM in Normandie, France

[www.bamcases.com](http://www.bamcases.com)

# Bamtech

THE HYBRID TECHNOLOGY



「bam」  
l'original

Designed by BAM in Normandie, France

[www.bamcases.com](http://www.bamcases.com)

# Cabine



「bam」  
l'original

Designed by BAM in Normandie, France

[www.bamcases.com](http://www.bamcases.com)



# Classic



「bam」  
l'original

Designed by BAM in Normandie, France

[www.bamcases.com](http://www.bamcases.com)



# Crew

READY TO TAKE-OFF



「bam」  
l'original

Designed by BAM in Normandie, France

[www.bamcases.com](http://www.bamcases.com)

# Cube

THE LIMITED EDITION



「bam」  
l'original

Fait Main en France ▪ Hand Made in France

[www.bamcases.com](http://www.bamcases.com)

# Flight Covers



「bam」  
l'original

Designed by BAM in Normandie, France

[www.bamcases.com](http://www.bamcases.com)



# Hightech

THE ORIGINAL



「bam」  
l'original

Fait Main en France • Hand Made in France

[www.bamcases.com](http://www.bamcases.com)



# Hoodies

COVER YOUR CASE



「bam」  
l'original

Designed by BAM in Normandie, France

[www.bamcases.com](http://www.bamcases.com)

# Hoodies Function

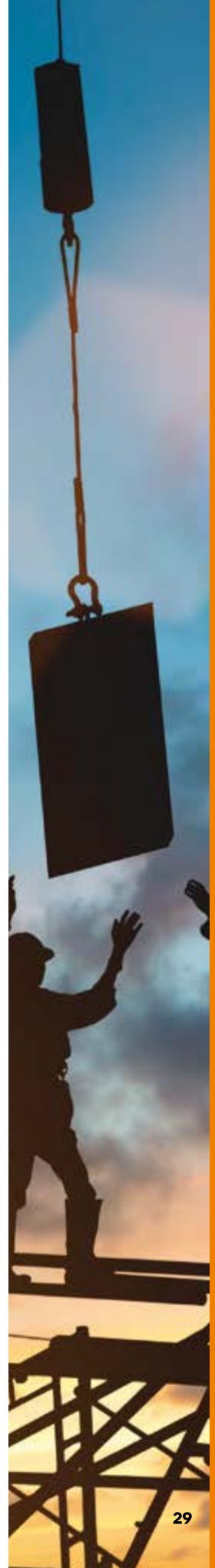
WORK HARD - PLAY HARD



「bam」  
l'original

Designed by BAM in Normandie, France

[www.bamcases.com](http://www.bamcases.com)



# Hoodies Submarine

FEEL SAFE



「bam」  
l'original

Designed by BAM in Normandie, France

[www.bamcases.com](http://www.bamcases.com)



# La Défense

STRONG.YOUNG.DURABLE.



「bam」  
l'original

Fait Main en France ▪ Hand Made in France

[www.bamcases.com](http://www.bamcases.com)

# L'Étoile

FASHION MEETS HIGHTECH



Real Leather  
Cover on Top  
Haut Hightech  
Recouvert de  
Cuir Véritable

**bam**  
l'original

Fait Main en France ▪ Hand Made in France

[www.bamcases.com](http://www.bamcases.com)



# Leo

URBAN JUNGLE



「bam」  
l'original

Designed by BAM in Normandie, France

[www.bamcases.com](http://www.bamcases.com)



# Nashville

BLAME IT ON MY ROOTS



「bam」  
l'original

Designed by BAM in Normandie, France

[www.bamcases.com](http://www.bamcases.com)

LIMITED EDITION

# Nashville

IKAT



**bam**  
l'original

Designed by BAM in Normandie, France

[www.bamcases.com](http://www.bamcases.com)



# New Trekking

BUILT FOR THE EXTREME



「bam」  
l'original

Designed by BAM in Normandie, France

[www.bamcases.com](http://www.bamcases.com)



# Panther

FEEL THE DIFFERENCE



「bam」  
l'original

Fait Main en France ▪ Hand Made in France

[www.bamcases.com](http://www.bamcases.com)

# Peak

FUNCTION FIRST



[ bam ]  
l'original

Designed by BAM in Normandie, France

[www.bamcases.com](http://www.bamcases.com)

# Performance

SOFT.LIGHT.COOL.



[ bam ]  
l'original

Designed by BAM in Normandie, France

[www.bamcases.com](http://www.bamcases.com)



# St. Germain

CLASSIC ELEGANCE



「bam」  
l'original

Designed by BAM in Normandie, France

[www.bamcases.com](http://www.bamcases.com)



# Shadow

FROM DARK TO LIGHT



「bam」  
l'original

Fait Main en France ▪ Hand Made in France

[www.bamcases.com](http://www.bamcases.com)

# Shamrock

GET LUCKY



[ bam ]  
l'original

Fait Main en France ▪ Hand Made in France

[www.bamcases.com](http://www.bamcases.com)



# Signature

TIMELESS RESISTANT

REAL LEATHER  
ACCENTS  
AVEC ÉLÉMENTS  
EN CUIR VÉRITABLE



「bam」  
l'original

Designed by BAM in Normandie, France

[www.bamcases.com](http://www.bamcases.com)

# Sky

AS LIGHT AS IT CAN BE



「bam」  
l'original

Fait Main en France ▪ Hand Made in France

[www.bamcases.com](http://www.bamcases.com)

# Softpack



「bam」  
l'original

Designed by BAM in Normandie, France

[www.bamcases.com](http://www.bamcases.com)



# Stage

READY TO ROCK



「bam」  
l'original

Fait Main en France ▪ Hand Made in France

[www.bamcases.com](http://www.bamcases.com)

# Stylus



**bam**  
l'original

Designed by BAM in Normandie, France

[www.bamcases.com](http://www.bamcases.com)

# Hightech

SUPRÊME

THE ORIGINAL

100%  
POLYCARBONATE



**bam**  
SUPRÊME  
l'original

Fait Main en France • Hand Made in France

[www.bamcases.com](http://www.bamcases.com)



# Ice

SUPRÊME

EVERLASTING STRENGTH



100%  
POLYCARBONATE

**bam**  
SUPRÊME  
l'original

Fait Main en France ▪ Hand Made in France

[www.bamcases.com](http://www.bamcases.com)

# L'Opéra

SUPRÊME

SHINE BRIGHT LIKE A DIAMOND

100%  
POLYCARBONATE



**bam**  
SUPRÊME  
l'original

Fait Main en France • Hand Made in France

[www.bamcases.com](http://www.bamcases.com)

# Orchestra

SUPRÊME

BLACK IS BEAUTIFUL

GENUINE  
LEATHER  
TOP



**bam**  
SUPRÊME  
l'original

Fait Main en France ▪ Hand Made in France

[www.bamcases.com](http://www.bamcases.com)



# Trekking

THE SKY IS THE LIMIT



**bam**  
l'original

Designed by BAM in Normandie, France

[www.bamcases.com](http://www.bamcases.com)

# Youngster

STARS OF TOMORROW



「bam」  
l'original

Designed by BAM in Normandie, France

[www.bamcases.com](http://www.bamcases.com)



# 1

## WIND CASES VENTS

BASSOON BASSON  
CLARINET CLARINETTE  
CORNET CORNET  
FLUTE FLÛTE

FRENCH HORN COR D'HARMONIE

OBOE & ENGLISH HORN HAUTOIS & COR ANGLAIS

ALTO / TENOR SAXOPHONE SAXOPHONE ALTO / TENOR

OTHER SAXOPHONES AUTRES SAXOPHONES

TROMBONE TROMBONE

TRUMPET TROMPETTE

HUNTING HORN TROMPE DE CHASSE

**bam**

l'original

[www.bamcases.com](http://www.bamcases.com)



# BASSOON BASSON

## ST. GERMAIN



**ST. GERMAIN FAGOTT BASSOON CASE** ÉTUI BASSON FAGOTT ST. GERMAIN  
REF. SG3133XLN BLACK NOIR REF. SG3133XLG GREY GRIS

REF. SG3133XLB BLUE BLEU

REF. SG3133XLC CHOCOLATE CHOCOLAT

**ST. GERMAIN GENTLEMAN BASSOON CASE** ÉTUI BASSON GENTLEMAN ST. GERMAIN  
REF. SG3333XLN BLACK NOIR REF. SG3333XLG GREY GRIS

REF. SG3333XLB BLUE BLEU

REF. SG3333XLC CHOCOLATE CHOCOLAT

## TREKKING



**TREKKING FRENCH BASSOON CASE**  
ÉTUI BASSON FRANÇAIS TREKKING

REF. 3033SN BLACK NOIR

## PEAK PERFORMANCE



**PEAK PERFORMANCE FRENCH BASSOON CASE**  
ÉTUI BASSON FRANÇAIS PEAK PERFORMANCE

REF. PEAK3033SN BLACK & GREY NOIR & GRIS

# BASSOON BASSON

## PANTHER



**PANTHER HIGHTECH FAGOTT BASSOON CASE**  
ÉTUI BASSON FAGOTT HIGHTECH PANTHER

REF. PANT3133XLN  
BLACK NOIR

REF. PANT3133XLG  
GREY GRIS

**PANTHER HIGHTECH ADJUSTABLE BASSOON CASE**  
ÉTUI BASSON AJUSTABLE HIGHTECH PANTHER

REF. PANT3233XLN  
BLACK NOIR

REF. PANT3233XLG  
GREY GRIS

**PANTHER HIGHTECH GENTLEMAN BASSOON CASE**  
ÉTUI BASSON GENTLEMAN HIGHTECH PANTHER

REF. PANT3333XLN  
BLACK NOIR

REF. PANT3333XLG  
GREY GRIS

## HIGHTECH



**HIGHTECH FAGOTT BASSOON CASE** ÉTUI HIGHTECH POUR BASSON FAGOTT

REF. 3133XLC  
BLACK CARBON LOOK  
ASPECT NOIR CARBONE

REF. 3133XLT  
TWEED  
TWEED



**HIGHTECH ADJUSTABLE BASSOON CASE** ÉTUI BASSON AJUSTABLE HIGHTECH

REF. 3233XLC  
BLACK CARBON LOOK  
ASPECT NOIR CARBONE

REF. 3233XLT  
TWEED  
TWEED



**HIGHTECH GENTLEMAN BASSOON CASE** ÉTUI HIGHTECH POUR BASSON GENTLEMAN

REF. 3333XLC  
BLACK CARBON LOOK  
ASPECT NOIR CARBONE

REF. 3333XLT  
TWEED  
TWEED

# BASSOON BASSON

## L'ÉTOILE



### L'ÉTOILE GENTLEMAN BASSOON CASE ÉTUI BASSON GENTLEMAN L'ÉTOILE

 REF. ET3333XLC CHOCOLATE CHOCOLAT	 REF. ET3333XLB SKY BLUE BLEU CIEL
 REF. ET3333XLG MUD GREY GRIS MUD	 REF. ET3333XLRO PINK ROSE
 REF. ET3333XLC COGNAC COGNAC	 REF. ET3333XLGR GREIGE GREIGE
 REF. ET3333XLN BLACK NOIR	 REF. ET3333XLVT VIOLET VIOLET
 REF. ET3333XLR RED ROUGE	



### L'ÉTOILE FAGOTT BASSOON CASE ÉTUI BASSON FAGOTT L'ÉTOILE

 REF. ET3133XLC CHOCOLATE CHOCOLAT	 REF. ET3133XLB SKY BLUE BLEU CIEL
 REF. ET3133XLG MUD GREY GRIS MUD	 REF. ET3133XLRO PINK ROSE
 REF. ET3133XLC COGNAC COGNAC	 REF. ET3133XLGR GREIGE GREIGE
 REF. ET3133XLN BLACK NOIR	 REF. ET3133XLVT VIOLET VIOLET
 REF. ET3133XLR RED ROUGE	

### ADJUSTABLE FAGOTT BASSOON CASE ÉTUI BASSON FAGOTT AJUSTABLE

 REF. ET3233XLC CHOCOLATE CHOCOLAT	 REF. ET3233XLB SKY BLUE BLEU CIEL
 REF. ET3233XLG MUD GREY GRIS MUD	 REF. ET3233XLRO PINK ROSE
 REF. ET3233XLC COGNAC COGNAC	 REF. ET3233XLGR GREIGE GREIGE
 REF. ET3233XLN BLACK NOIR	 REF. ET3233XLVT VIOLET VIOLET
 REF. ET3233XLR RED ROUGE	



# CLARINET CLARINETTE

## SIGNATURE



### SIGNATURE Bb CLARINET CASE

ÉTUI CLARINETTE Sib SIGNATURE

REF. SIGN3027SN

BLACK  
NOIR

REF. SIGN3027SG

GREY  
GRIS

### SIGNATURE Bb + A CLARINETS CASE

ÉTUI DOUBLE CLARINETTES Sib + La SIGNATURE

REF. SIGN3028SN

BLACK  
NOIR

REF. SIGN3028SG

GREY  
GRIS

### SIGNATURE Bb CLARINET + MUSIC STAND CASE

ÉTUI CLARINETTE Sib + PUPITRE SIGNATURE

REF. SIGN3027MSN

BLACK  
NOIR

REF. SIGN3027MSG

GREY  
GRIS



### SIGNATURE WEEKENDER BACK PACK FOR 1 OBOE, Bb CLARINET OR FLUTE HIGHTECH HARD-SHELL CASE

SAC À DOS WEEKENDER SIGNATURE POUR ÉTUI RIGIDE  
1 HAUTOBOIS, CLARINETTE SIB OU FLÛTE

REF. SIGNCV0025N

BLACK  
NOIR

REF. SIGNCV0025G

GREY  
GRIS



### SIGNATURE WEEKENDER BRIEFCASE FOR 2 CLARINETS HIGHTECH HARD-SHELL CASE

MALETTE WEEKENDER SIGNATURE POUR ÉTUI RIGIDE  
2 CLARINETTES HIGHTECH

REF. SIGNCV0026N

BLACK  
NOIR

REF. SIGNCV0026G

GREY  
GRIS

# CLARINET CLARINETTE

## TREKKING



REF. 3027SBN BLACK NOIR



REF. 3027SBM BLUE BLEU



REF. 3027SBH RED ROUGE

**TREKKING 1 Bb CLARINET CASE**  
ÉTUI 1 CLARINETTE TREKKING



REF. 3028SN BLACK NOIR



REF. 3028SM BLUE BLEU



REF. 3028SH RED ROUGE

**TREKKING DOUBLE Bb + A CLARINETS CASE**  
ÉTUI 2 CLARINETTES Sib + La TREKKING

## NEW TREKKING



REF. TREK3027SC BLACK CARBON LK.  
ASP. NOIR CARBONE



REF. TREK3027SSC SILVER CARBON LK  
ASP. SILVER CARBONE



REF. TREK3027SA BR. ALU.  
ALU. BROSSÉ

**NEW TREKKING Bb CLARINET CASE**  
ÉTUI 1 CLARINETTE SIB NEW TREKKING



REF. TREK3028SC BLACK CARBON LK.  
ASP. NOIR CARBONE



REF. TREK3028SSC SILVER CARBON LK  
ASP. SILVER CARBONE



REF. TREK3028SA BR. ALU.  
ALU. BROSSÉ

**NEW TREKKING DOUBLE Bb + A CLARINETS CASE**  
ÉTUI 2 CLARINETTES SIB + LA NEW TREKKING

**NEW TREKKING Bb CLARINET + MUSIC STAND CASE**  
ÉTUI CLARINETTE SIB + PUPITRE NEW TREKKING

REF. TREK3027MSC BLACK CARBON LK.  
ASP. NOIR CARBONE

REF. TREK3027MSSC SILVER CARBON LK  
ASP. SILVER CARBONE

REF. TREK3027MSA BR. ALU.  
ALU. BROSSÉ

# CLARINET CLARINETTE

## STAGE



**STAGE B $\flat$  CLARINET**  
ÉTUI 1 CLARINETTE SIB STAGE

REF. STAGE3027IN **BLACK SABBATH**  
NOIR SABBATH

REF. STAGE3027IG **GREY THUNDER**  
GRIS THUNDER

## PEAK PERFORMANCE



**PEAK PERFORMANCE B $\flat$  CLARINET BACKPACK CASE**  
ÉTUI SAC À DOS CLARINETTE SIB PEAK PERFORMANCE

REF. PEAK3027SN **BLACK & GREY**  
NOIR & GRIS

**PEAK PERFORMANCE B $\flat$  & A CLARINETS BACKPACK CASE**  
ÉTUI POUR CLARINETTES SIB ET LA SAC A DOS PEAK PERFORMANCE

REF. PEAK3028SN **BLACK & GREY**  
NOIR & GRIS

## PANTHER



**PANTHER HIGHTECH BASS CLARINET (TO C) CASE**  
ÉTUI CLARINETTE BASSE À L'UT HIGHTECH PANTHER

REF. PANT3026XLN **BLACK** NOIR

REF. PANT3026XLG **GREY** GRIS

**PANTHER HIGHTECH BASS CLARINET (TO C) CASE WITH DOUBLE CASE (B $\flat$ &A)**  
ÉTUI CLARINETTE BASSE À L'UT HIGHTECH + ÉTUI 2 CLARINETTES Sib/La PANTHER

REF. PANT3126XLN **BLACK** NOIR

REF. PANT3126XLG **GREY** GRIS



# CLARINET CLARINETTE

## SOFTPACK



## CLASSIC



**SOFTPACK HIP HOP BB CLARINET CASE**  
ÉTUI CLARINETTE SIB HIP HOP

REF. 3027DB BLACK NOIR

**CLASSIC DOUBLE CLARINETS Bb + A CASE**  
ÉTUI 2 CLARINETTES Sib + La CLASSIC

REF. 3128S BLACK NOIR

## TREKKING



**TREKKING BASS CLARINET (to Eb)**  
ÉTUI CLARINETTE BASSE AU MIB TREKKING

REF. 3025SM BLUE BLEU

REF. 3025SN BLACK NOIR

**TREKKING BASS CLARINET (to C)**  
ÉTUI CLARINETTE BASSE À L'UT TREKKING

REF. 3026SN BLACK NOIR

## HIGHTECH



**HIGHTECH BASS CLARINET (TO C) CASE**  
ÉTUI CLARINETTE BASSE À L'UT HIGHTECH

REF. 3026XLC BLACK CARBON LOOK ASPECT NOIR CARBONE

REF. 3026XLT TWEED TWEED

**HIGHTECH BASS CLARINET (TO C) CASE + DOUBLE CLARINETS CASE (Bb/A)**  
ÉTUI CLARINETTE BASSE À L'UT HIGHTECH + ÉTUI 2 CLARINETTES Sib/La

REF. 3126XLC BLACK CARBON LOOK ASPECT NOIR CARBONE

REF. 3126XLT TWEED TWEED

# CORNET CORNET

## ST. GERMAIN



### ST. GERMAIN CORNET CASE ÉTUI CORNET ST. GERMAIN

REF. SG3035SB BLUE BLEU

REF. SG3035SC CHOCOLATE CHOCOLAT

REF. SG3035SG GREY GRIS

REF. SG3035SN BLACK NOIR

## PEAK PERFORMANCE



### PEAK PERFORMANCE CORNET CASE

ÉTUI CORNET PEAK PERFORMANCE

REF. PEAK3035SN

BLACK & GREY  
NOIR & GRIS

## TREKKING



### TREKKING CORNET CASE

ÉTUI CORNET TREKKING

REF. 3035SN BLACK NOIR

REF. 3035SM BLUE BLEU

REF. 3035SF GREEN VERT

# FLUTE FLÛTE

## PANTHER



**PANTHER HIGHTECH SLIM FLUTE CASE**  
ÉTUI FLÛTE SLIM HIGHTECH PANTHER

REF. PANT4019XLN  
BLACK NOIR

REF. PANT4019XLG  
GREY GRIS



**PANTHER HIGHTECH FLUTE CASE**  
ÉTUI FLÛTE HIGHTECH PANTHER

REF. PANT4009XLN  
BLACK NOIR

REF. PANT4009XLG  
GREY GRIS



**PANTHER HIGHTECH PICCOLO FLUTE CASE**  
ÉTUI FLÛTE PICCOLO HIGHTECH PANTHER

REF. PANT4029XLN  
BLACK NOIR

REF. PANT4029XLG  
GREY GRIS

NEW!

## HIGHTECH



**HIGHTECH SLIM FLUTE CASE** ETUI FLÛTE SLIM HIGHTECH

REF. 4019XLC  
BLACK CARBON LOOK  
ASPECT NOIR CARBONE

REF. 4019XLLB  
BLACK LAZURE  
NOIR LAZURE

REF. 4019XLSC  
SILVER CARBON LOOK  
ASPECT SILVER CARBONE

REF. 4019XLT  
TWEED  
TWEED



**HIGHTECH FLUTE CASE** ÉTUI FLÛTE HIGHTECH

REF. 4009XLC  
BLACK CARBON LOOK  
ASPECT NOIR CARBONE

REF. 4009XLLB  
BLACK LAZURE  
NOIR LAZURE

REF. 4009XLSC  
SILVER CARBON LOOK  
ASPECT SILVER CARBONE

REF. 4009XLT  
TWEED  
TWEED



**HIGHTECH PICCOLO FLUTE CASE** ÉTUI FLÛTE PICCOLO HIGHTECH

REF. 4029XLC  
BLACK CARBON LOOK  
ASPECT NOIR CARBONE

REF. 4029XLLB  
BLACK LAZURE  
NOIR LAZURE

REF. 4029XLSC  
SILVER CARBON LOOK  
ASPECT SILVER CARBONE


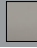


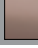


REF. 4029XLT  
TWEED  
TWEED

NEW!



# FLUTE FLÛTE

## L'ÉTOILE

L'ÉTOILE FLUTE CASE ÉTUI FLÛTE L'ÉTOILE	
 REF. ET4009XLC CHOCOLATE CHOCOLAT	 REF. ET4009XLB SKY BLUE BLEU CIEL
 REF. ET4009XLG MUD GREY GRIS MUD	 REF. ET4009XLRO PINK ROSE
 REF. ET4009XLC COGNAC COGNAC	 REF. ET4009XLGR GREIGE GREIGE
 REF. ET4009XLN BLACK NOIR	 REF. ET4009XLVT VIOLET VIOLET
 REF. ET4009XLR RED ROUGE	



## ST. GERMAIN



### ST. GERMAIN COVER FOR HIGHTECH FLUTE CASE HOUSSE ST.GERMAIN POUR ÉTUI FLÛTE HIGHTECH

REF. SG4009XLB BLUE BLEU

REF. SG4009XLC CHOCOLATE CHOCOLAT

REF. SG4009XLG GREY GRIS

REF. SG4009XLN BLACK NOIR

## PERFORMANCE



### PERFORMANCE COVER FOR HIGHTECH FLUTE CASE HOUSSE PERFORMANCE POUR ÉTUI FLUTE HIGHTECH

REF. PERF4009XLC  
CAMEL CAMEL

REF. PERF4009XLB  
SKY BLUE BLEU CIEL

REF. PERF4009XLR  
CRANBERRY RED ROUGE CRANBERRY

REF. PERF4009XLN  
BLACK NOIR

# FLUTE FLÛTE

## BAMTECH

NEW!



**BAMTECH COVER FOR HIGHTECH FLUTE CASE**  
HOUSSE BAMTECH POUR ÉTUI FLÛTE HIGHTECH

REF. BTECH4009XLN BLACK  
NOIR

**BAMTECH COVER FOR HIGHTECH FLUTE PICCOLO CASE**  
HOUSSE BAMTECH POUR ÉTUI FLÛTE PICCOLO HIGHTECH

REF. BTECH4029XLN BLACK  
NOIR

## SOFTPACK



**CASE FOR FLUTE (C-FOOT) + PICCOLO + MUSIC STAND** ÉTUI FLÛTE (PATTE D'UT) + PICCOLO + PUPITRE

REF. 4010S BLACK  
NOIR

**CASE FOR FLUTE (B-FOOT) + PICCOLO + MUSIC STAND** ÉTUI FLÛTE (PATTE DE SI) + PICCOLO + PUPITRE

REF. 4010SB BLACK  
NOIR

## SIGNATURE



**SIGNATURE WEEKENDER BACK PACK FOR 1 OBOE,  
B $\flat$  CLARINET OR FLUTE HIGHTECH HARD-SHELL CASE**  
SAC À DOS WEEKENDER SIGNATURE POUR ÉTUI RIGIDE  
1 HAUTOIS, CLARINETTE SIB OU FLÛTE

REF. SIGNCV0025N BLACK  
NOIR

REF. SIGNCV0025G GREY  
GRIS

# FRENCH HORN COR D'HARMONIE

## HIGHTECH



### HIGHTECH FRENCH HORN CASE ÉTUI COR D'HARMONIE HIGHTECH

REF. 6001XLC **BLACK CARBON LOOK**  
ASPECT NOIR CARBONE

REF. 6001XLT **TWEED**  
TWEED

### HIGHTECH ADJUSTABLE FRENCH HORN CASE ÉTUI COR D'HARMONIE AJUSTABLE HIGHTECH

REF. 6002XLC **BLACK CARBON LOOK**  
ASPECT NOIR CARBONE

REF. 6002XLT **TWEED**  
TWEED

## PANTHER



### PANTHER HIGHTECH FRENCH HORN CASE ÉTUI COR D'HARMONIE HIGHTECH PANTHER

REF. PANT6001XLN **BLACK**  
NOIR

REF. PANT6001XLG **GREY**  
GRIS

### PANTHER HIGHTECH ADJUSTABLE FRENCH HORN CASE ÉTUI COR D'HARMONIE AJUSTABLE HIGHTECH PANTHER

REF. PANT6002XLN **BLACK**  
NOIR

REF. PANT6002XLG **GREY**  
GRIS



# FRENCH HORN COR D'HARMONIE

## LA DÉFENSE



### HIGHTECH FRENCH HORN CASE ÉTUI COR D'HARMONIE HIGHTECH

REF. DEF6001XLA

BRUSHED ALUMINIUM  
ALUMINIUM BROSSÉ

REF. DEF6001XLO

ORANGE  
ORANGE

### HIGHTECH ADJUSTABLE FRENCH HORN CASE ÉTUI COR D'HARMONIE AJUSTABLE HIGHTECH

REF. DEF6002XLA

BRUSHED ALUMINIUM  
ALUMINIUM BROSSÉ

REF. DEF6002XLO

ORANGE  
ORANGE

## ALL FRENCH HORNS ARE COMPATIBLE :

BRAND/ MARQUE	MODEL	SINGLE & DOUBLE DETACHABLE BELL/ SIMPLE & DOUBLE PAVILLON DEMONTABLE	
		REF 6001XL	REF 6002XL
Alexander	103, 105	x	x
Dürk			x
Hans Hoyer	801, 6801		x
Yamaha	567D, 671D		x
E.Schmid			x
Holton	378 R		x
Conn	10DE, 11DE		x
Geyer			x
Kruspe			x

## L'ÉTOILE



### L'ÉTOILE FRENCH HORN CASE ÉTUI COR D'HARMONIE L'ÉTOILE



REF. ET6001XLC  
CHOCOLATE CHOCOLAT



REF. ET6001XLB  
SKY BLUE BLEU CIEL



REF. ET6001XLG  
MUD GREY GRIS MUD



REF. ET6001XLR0  
PINK ROSE



REF. ET6001XLC  
COGNAC COGNAC



REF. ET6001XLGR  
GREIGE GREIGE



REF. ET6001XLN  
BLACK NOIR



REF. ET6001XLVT  
VIOLET VIOLET



REF. ET6001XLR  
RED ROUGE

### ADJUSTABLE FRENCH HORN CASE ÉTUI COR D'HARMONIE AJUSTABLE



REF. ET6002XLC  
CHOCOLATE CHOCOLAT



REF. ET6002XLB  
SKY BLUE BLEU CIEL



REF. ET6002XLG  
MUD GREY GRIS MUD



REF. ET6002XLR0  
PINK ROSE



REF. ET6002XLC  
COGNAC COGNAC



REF. ET6002XLGR  
GREIGE GREIGE



REF. ET6002XLN  
BLACK NOIR



REF. ET6002XLVT  
VIOLET VIOLET



REF. ET6002XLR  
RED ROUGE

# OBOE & ENGLISH HORN

## L'ÉTOILE



### L'ÉTOILE OBOE CASE ÉTUI HAUTBOIS L'ÉTOILE

 REF. ET3029XLC CHOCOLATE CHOCOLAT	 REF. ET3029XLB SKY BLUE BLEU CIEL
 REF. ET3029XLG MUD GREY GRIS MUD	 REF. ET3029XLRO PINK ROSE
 REF. ET3029XLC COGNAC COGNAC	 REF. ET3029XLGR GREIGE GREIGE
 REF. ET3029XLN BLACK NOIR	 REF. ET3029XLVT VIOLET VIOLET
 REF. ET3029XLR RED ROUGE	

### L'ÉTOILE COMPACT OBOE CASE ÉTUI HAUTBOIS COMPACT L'ÉTOILE

 REF. ET3129XLC CHOCOLATE CHOCOLAT	 REF. ET3129XLB SKY BLUE BLEU CIEL
 REF. ET3129XLG MUD GREY GRIS MUD	 REF. ET3129XLRO PINK ROSE
 REF. ET3129XLC COGNAC COGNAC	 REF. ET3129XLGR GREIGE GREIGE
 REF. ET3129XLN BLACK NOIR	 REF. ET3129XLVT VIOLET VIOLET
 REF. ET3129XLR RED ROUGE	

## PANTHER



### PANTHER HIGHTECH COMPACT OBOE CASE ÉTUI HAUTBOIS COMPACT HIGHTECH PANTHER

REF. PANT3129XLN BLACK NOIR

REF. PANT3129XLG GREY GRIS



### PANTHER HIGHTECH OBOE CASE ÉTUI HAUTBOIS HIGHTECH PANTHER

REF. PANT3029XLN BLACK NOIR

REF. PANT3029XLG GREY GRIS

# HAUTBOIS & COR ANGLAIS

## NEW TREKKING



**NEW TREKKING OBOE CASE**  
ÉTUI HAUTBOIS NEW TREKKING

REF. TREK3029SC **BLACK CARBON LK.**  
ASP. NOIR CARBONE

REF. TREK3029SSC **SILVER CARBON LK**  
ASP. SILVER CARBONE

REF. TREK3029SA **BR. ALU.**  
ALU. BROSSÉ

## TREKKING



**TREKKING OBOE CASE**  
ÉTUI DE HAUTBOIS TREKKING

REF. 3029SBN **BLACK NOIR**

REF. 3029SBM **BLUE BLEU**

REF. 3029SBH **RED ROUGE**



**TREKKING OBOE & ENGLISH HORN CASE**  
ÉTUI DE HAUTBOIS + COR ANGLAIS TREKKING

REF. 3031SN **BLACK NOIR**

REF. 3031SM **BLUE BLEU**

REF. 3031SH **RED ROUGE**

## HIGHTECH



**HIGHTECH COMPACT OBOE CASE** ÉTUI HAUTBOIS COMPACT HIGHTECH

REF. 3129XLC **BLACK CARBON LOOK**  
ASPECT NOIR CARBONE

REF. 3129XLLB **BLACK LAZURE**  
NOIR LAZURE

REF. 3129XLC **SILVER CARBON LOOK**  
ASPECT SILVER CARBONE

REF. 3129XLT **TWEED**  
TWEED



# ALTO / TENOR SAXOPHONE

## BAMTECH



**BAMTECH ALTO SAX GIGBAG** HOUSSE BAMTECH POUR SAX ALTO

REF. BTECH3001SN

BLACK  
NOIR

**BAMTECH TENOR SAX GIGBAG** HOUSSE BAMTECH POUR SAX TENOR

REF. BTECH3002SN

BLACK  
NOIR

## HIGHTECH



**HIGHTECH ALTO SAX CASE WITHOUT POCKET** ÉTUI SAX ALTO HIGHTECH SANS POCHE

REF. 4101XLC

BLACK CARBON LOOK  
ASPECT NOIR CARBONE

REF. 4101XLT

TWEED  
TWEED

**HIGHTECH ALTO SAX CASE WITH POCKET** ÉTUI SAX ALTO HIGHTECH AVEC POCHE

REF. 4101XLPC

BLACK CARBON LOOK  
ASPECT NOIR CARBONE

REF. 4101XLPT

TWEED  
TWEED

**HIGHTECH TENOR SAX CASE WITHOUT POCKET** ÉTUI SAX TENOR HIGHTECH SANS POCHE

REF. 4102XLC

BLACK CARBON LOOK  
ASPECT NOIR CARBONE

REF. 4102XLT

TWEED  
TWEED

**HIGHTECH TENOR SAX CASE WITH POCKET** ÉTUI SAX TENOR HIGHTECH AVEC POCHE

REF. 4102XLPC

BLACK CARBON LOOK  
ASPECT NOIR CARBONE

REF. 4102XLPT

TWEED  
TWEED

## NEW TREKKING



**NEW TREK. ALTO SAX CASE**  
ÉTUI SAX ALTO NEW TREKKING

REF. TREK3021SC

BLACK CARBON LOOK  
ASPECT NOIR CARBONE

REF. TREK3021SSC

SILVER CARBON LOOK  
ASPECT SILVER CARBONE

REF. TREK3021SA

BRUSHED ALUMINIUM  
ALUMINIUM BROSSÉ

**NEW TREK. TENOR SAX CASE**  
ÉTUI SAX TENOR NEW TREKKING

REF. TREK3022SC

BLACK CARBON LOOK  
ASPECT NOIR CARBONE

REF. TREK3022SSC

SILVER CARBON LOOK  
ASPECT SILVER CARBONE

REF. TREK3022SA

BRUSHED ALUMINIUM  
ALUMINIUM BROSSÉ

# SAXOPHONE ALTO / TENOR

## IKAT NASHVILLE



**IKAT NASHVILLE ALTO SAX GIGBAG**  
HOUSSE SAX ALTO IKAT NASHVILLE

REF. IKAT3001SCA CANVAS  
CANVAS

**IKAT NASHVILLE TENOR SAX GIGBAG**  
HOUSSE SAX TÉNOR IKAT NASHVILLE

REF. IKAT3002SCA CANVAS  
CANVAS

## NASHVILLE



**NASHVILLE ALTO SAX GIGBAG**  
HOUSSE SAX ALTO NASHVILLE

REF. NASH3001SCA CANVAS  
CANVAS

**NASHVILLE TENOR SAX GIGBAG**  
HOUSSE SAX TÉNOR NASHVILLE

REF. NASH3002SCA CANVAS  
CANVAS

## L'ÉTOILE



### L'ÉTOILE ALTO SAX CABINE CASE ÉTUI SAX ALTO CABINE L'ÉTOILE

 REF. ET4011SC CHOCOLATE CHOCOLAT	 REF. ET4011SB SKY BLUE BLEU CIEL
 REF. ET4011SG MUD GREY GRIS MUD	 REF. ET4011SRO PINK ROSE
 REF. ET4011SCC COGNAC COGNAC	 REF. ET4011SGR GREIGE GREIGE
 REF. ET4011SN BLACK NOIR	 REF. ET4011SVT VIOLET VIOLET
 REF. ET4011SR RED ROUGE	

### L'ÉTOILE TENOR SAX CABINE CASE ÉTUI SAX TENOR CABINE L'ÉTOILE

 REF. ET4012SC CHOCOLATE CHOCOLAT	 REF. ET4012SB SKY BLUE BLEU CIEL
 REF. ET4012SG MUD GREY GRIS MUD	 REF. ET4012SRO PINK ROSE
 REF. ET4012SCC COGNAC COGNAC	 REF. ET4012SGR GREIGE GREIGE
 REF. ET4012SN BLACK NOIR	 REF. ET4012SVT VIOLET VIOLET
 REF. ET4012SR RED ROUGE	

# ALTO / TENOR SAXOPHONE

## CABINE



### CABINE ALTO SAX CASE ÉTUI SAX ALTO CABINE

REF. 4011SC BLACK CARBON NOIR CARBONE

REF. 4011SNN BLACK NOIR

REF. 4011SGC

LIGHT GREY  
GRIS CLAIR

REF. 4011SRG

POMEGRANATE RED  
ROUGE GRENADE

### CABINE TENOR SAX CASE ÉTUI SAX TENOR CABINE

REF. 4012SC BLACK CARBON NOIR CARBONE

REF. 4012SNN BLACK NOIR

REF. 4012SGC

LIGHT GREY  
GRIS CLAIR

REF. 4012SRG

POMEGRANATE RED  
ROUGE GRENADE

## SOFTPACK



### SOFTPACK ALTO SAX CASE ÉTUI SAX ALTO SOFTPACK

REF. 4001SB BLUE BLEU

REF. 4001SM MINT MENTHE

REF. 4001SN BLACK NOIR

REF. 4001ST TERRACOTTA

### SOFTPACK TENOR SAX CASE ÉTUI SAX TÉNOR SOFTPACK

REF. 4002SB BLUE BLEU

REF. 4002SM MINT MENTHE

REF. 4002SN BLACK NOIR

REF. 4002ST TERRACOTTA

## CLASSIC



### CLASSIC ALTO SAX CASE ÉTUI SAX ALTO CLASSIC

REF. 3001SF GREEN VERT

REF. 3001SM BLUE BLEU

REF. 3001SN BLACK NOIR

### CLASSIC TENOR SAX CASE ÉTUI SAX TENOR CLASSIC

REF. 3002SF GREEN VERT

REF. 3002SM BLUE BLEU

REF. 3002SN BLACK NOIR

## SIGNATURE



### SIGNATURE ALTO SAX CASE

ÉTUI SAX ALTO SIGNATURE

REF. SIGN3001SN

BLACK  
NOIR

REF. SIGN3001SG

GREY  
GRIS

### SIGNATURE TENOR SAX CASE

ÉTUI SAX TENOR SIGNATURE

REF. SIGN3002SN

BLACK  
NOIR

REF. SIGN3002SG

GREY  
GRIS



# SAXOPHONE ALTO / TENOR

## TREKKING



**TREKKING ALTO SAX CASE** ÉTUI SAX ALTO TREKKING  
REF. 3021SN BLACK NOIR

REF. 3021SM BLUE BLEU

REF. 3021SF GREEN VERT

**TREKKING TENOR SAX CASE** ÉTUI SAX TENOR TREKKING  
REF. 3022SN BLACK NOIR

REF. 3022SM BLUE BLEU

REF. 3022SF GREEN VERT

## ST. GERMAIN



**ST. GERMAIN ALTO SAX CASE TREKKING** ÉTUI SAX ALTO TREKKING ST. GERMAIN  
REF. SG3021SB BLUE BLEU

REF. SG3021SC CHOCOLATE CHOCOLAT

REF. SG3021SG GREY GRIS

REF. SG3021SN BLACK NOIR

**ST. GERMAIN TENOR SAX CASE TREKKING** ÉTUI SAX TENOR TREKKING ST. GERMAIN  
REF. SG3022SB BLUE BLEU

REF. SG3022SC CHOCOLATE CHOCOLAT

REF. SG3022SG GREY GRIS

REF. SG3022SN BLACK NOIR

# ALTO / TENOR SAXOPHONE

## PANTHER



**PANTHER CABINE ALTO SAX CASE**  
ÉTUI SAX ALTO CABINE PANTHER

REF. PANT4011SN  
BLACK NOIR

REF. PANT4011SG  
GREY GRIS

**PANTHER CABINE TENOR SAX CASE**  
ÉTUI SAX TENOR CABINE PANTHER

REF. PANT4012SN  
BLACK NOIR

REF. PANT4012SG  
GREY GRIS



**PANTHER HIGHTECH ALTO SAX CASE**  
ÉTUI SAX ALTO HIGHTECH PANTHER

REF. PANT4101XLN  
BLACK NOIR

REF. PANT4101XLG  
GREY GRIS

**PANTHER HIGHTECH ALTO SAX CASE WITH POCKET**  
ÉTUI SAX ALTO HIGHTECH AVEC POCHE PANTHER

REF. PANT4101XLPN  
BLACK NOIR

REF. PANT4101XLPG  
GREY GRIS

**PANTHER HIGHTECH TENOR SAX CASE**  
ÉTUI SAX TENOR HIGHTECH PANTHER

REF. PANT4102XLN  
BLACK NOIR

REF. PANT4102XLG  
GREY GRIS

**PANTHER HIGHTECH TENOR SAX CASE WITH POCKET**  
ÉTUI SAX TENOR HIGHTECH AVEC POCHE PANTHER

REF. PANT4102XLPN  
BLACK NOIR

REF. PANT4102XLPG  
GREY GRIS

## STAGE



**STAGE ALTO SAX CASE**  
ÉTUI SAX ALTO STAGE

REF. STAGE4111IG  
GREY THUNDER  
GRIS THUNDER

REF. STAGE4111IN  
BLACK SABBATH  
NOIR SABBATH

**STAGE TENOR SAX CASE**  
ÉTUI SAX TENOR STAGE

REF. STAGE4112IG  
GREY THUNDER  
GRIS THUNDER

REF. STAGE4112IN  
BLACK SABBATH  
NOIR SABBATH

# SAXOPHONE ALTO / TENOR

## LA DÉFENSE



**LA DÉFENSE CABINE ALTO SAX CASE**  
ÉTUI SAX ALTO CABINE LA DÉFENSE

REF. DEF4011SA

BRUSHED ALUMINIUM  
ALUMINIUM BROSSÉ

REF. DEF4011SO

ORANGE  
ORANGE

**LA DÉFENSE CABINE TENOR SAX CASE**  
ÉTUI SAX TENOR CABINE LA DÉFENSE

REF. DEF4012SA

BRUSHED ALUMINIUM  
ALUMINIUM BROSSÉ

REF. DEF4012SO

ORANGE  
ORANGE



**LA DÉFENSE HIGHTECH ALTO SAX CASE**  
ÉTUI SAX ALTO HIGHTECH LA DÉFENSE

REF. DEF4101XLA

BRUSHED ALUMINIUM  
ALUMINIUM BROSSÉ

REF. DEF4101XLO

ORANGE  
ORANGE

**LA DÉFENSE HIGHTECH ALTO SAX CASE WITH POCKET**  
ÉTUI SAX ALTO HIGHTECH AVEC POCHE LA DÉFENSE

REF. DEF4101XLA

BRUSHED ALUMINIUM  
ALUMINIUM BROSSÉ

REF. DEF4101XLO

ORANGE  
ORANGE

**LA DÉFENSE HIGHTECH TENOR SAX CASE**  
ÉTUI SAX TENOR HIGHTECH LA DÉFENSE

REF. DEF4102XLA

BRUSHED ALUMINIUM  
ALUMINIUM BROSSÉ

REF. DEF4102XLO

ORANGE  
ORANGE

**LA DÉFENSE HIGHTECH TENOR SAX CASE WITH POCKET**  
ÉTUI SAX TENOR HIGHTECH AVEC POCHE LA DÉFENSE

REF. DEF4102XLA

BRUSHED ALUMINIUM  
ALUMINIUM BROSSÉ

REF. DEF4102XLO

ORANGE  
ORANGE

## PEAK PERFORMANCE



**PEAK PERFORMANCE ALTO SAX CASE**  
ÉTUI SAX ALTO PEAK PERFORMANCE

REF. PEAK3021SN

BLACK & GREY  
NOIR & GRIS

**PEAK PERFORMANCE TENOR SAX CASE**  
ÉTUI SAX TÉNOR PEAK PERFORMANCE

REF. PEAK3022SN

BLACK & GREY  
NOIR & GRIS

# OTHER SAXOPHONES AUTRES SAXOPHONES

## HIGHTECH



**HIGHTECH BARITONE SAX CASE**  
ÉTUI DE SAX BARYTON HIGHTECH

REF. 3101XLGC LIGHT GREY  
GRIS CLAIR

REF. 3101XLNS BLACK  
NOIR



**HIGHTECH ALTO & SOPRANO SAX CASE**  
ÉTUI SAX ALTO & SOPRANO HIGHTECH

REF. 4120XLGC LIGHT GREY  
GRIS CLAIR

REF. 4120XLNN BLACK  
NOIR



**HIGHTECH TENOR & SOPRANO SAX CASE**  
ÉTUI SAX TENOR & SOPRANO HIGHTECH

REF. 4122XLGC LIGHT GREY  
GRIS CLAIR

REF. 4122XLNS BLACK  
NOIR



# OTHER SAXOPHONES AUTRES SAXOPHONES

## STAGE



**STAGE SOPRANO SAX CASE**  
ÉTUI SAX SOPRANO STAGE

REF. STAGE3020IG

GREY THUNDER  
GRIS THUNDER

## SOFTPACK



**SOFTPACK SOPRANO SAX HIP HOP CASE**  
ÉTUI SAX SOPRANO HIP HOP SOFTPACK

REF. 3020D  
BLACK  
NOIR

## TREKKING



**TREKKING SOPRANO SAX CASE**  
ÉTUI SAXOPHONE SOPRANO TREKKING

REF. 3020SN  
BLACK  
NOIR

## SIGNATURE



**SIGNATURE SOPRANO SAX CASE**  
ÉTUI SAX SOPRANO SIGNATURE

REF. SIGN3020SN

BLACK  
NOIR



REF. SIGN3020SG

GREY  
GRIS



# TROMBONE TROMBONE

## IKAT NASHVILLE

NEW!



**IKAT NASHVILLE TENOR TROMBONE GIGBAG**  
HOUSSE TROMBONE TENOR IKAT NASHVILLE

REF. IKAT3130SCA

CANVAS  
CANVAS

## PEAK PERFORMANCE



**PEAK PERFORMANCE TENOR TROMBONE CASE**  
ÉTUI TROMBONE TENOR PEAK PERFORMANCE

REF. PEAK3030SN

BLACK & GREY  
NOIR & GRIS

## CLASSIC



**CLASSIC TENOR TROMBONE CASE WITH POCKET**  
ÉTUI TROMBONE TENOR AVEC POCHÉ CLASSIC

REF. 3030SP

BLACK  
NOIR

**BASS TROMBONE CASE**  
ÉTUI TROMBONE BASSE

REF. 3032SN  
BLACK  
NOIR

# TRUMPET TROMPETTE

## BAMTECH



**BAMTECH 1 TRUMPET GIGBAG**  
HOUSSE 1 TROMPETTE BAMTECH

REF. BTECH3123SN BLACK  
NOIR

**BAMTECH 2 TRUMPETS GIGBAG**  
HOUSSE 2 TROMPETTES BAMTECH

REF. BTECH3124SN BLACK  
NOIR

## IKAT NASHVILLE



**IKAT NASHVILLE 1 TRUMPET GIGBAG**  
HOUSSE 1 TROMPETTE IKAT NASHVILLE

REF. IKAT3123SCA CANVAS  
CANVAS

**IKAT NASHVILLE 2 TRUMPETS GIGBAG**  
HOUSSE 2 TROMPETTES IKAT NASHVILLE

REF. IKAT3124SCA CANVAS  
CANVAS

## NASHVILLE



**NASHVILLE 1 TRUMPET GIGBAG**  
HOUSSE 1 TROMPETTE NASHVILLE

REF. NASH3123SCA CANVAS  
CANVAS

**NASHVILLE 2 TRUMPETS GIGBAG**  
HOUSSE 2 TROMPETTES NASHVILLE

REF. NASH3124SCA CANVAS  
CANVAS



# TRUMPET TROMPETTE

## PEAK PERFORMANCE



**PEAK PERFORMANCE 1 TRUMPET CASE**  
ÉTUI 1 TROMPETTE PEAK PERFORMANCE

REF. PEAK3023SN

**BLACK & GREY**  
NOIR & GRIS

**PEAK PERFORMANCE 2 TRUMPETS CASE**  
ÉTUI 2 TROMPETTES PEAK PERFORMANCE

REF. PEAK3024SN

**BLACK & GREY**  
NOIR & GRIS

## TREKKING



**TREKKING 1 TRUMPET CASE** ÉTUI 1 TROMPETTE TREKKING

REF. 3023SN **BLACK NOIR**

REF. 3023SM **BLUE BLEU**

**TREKKING 2 TRUMPETS CASE** ÉTUI 2 TROMPETTES TREKKING

REF. 3024SN **BLACK NOIR**

REF. 3024SM **BLUE BLEU**

## NEW TREKKING



**NEW TREKKING 1 TRUMPET CASE**  
ÉTUI 1 TROMPETTE  
NEW TREKKING

REF. TREK3023SC

**BLACK CARBON LOOK**  
ASPECT NOIR CARBONE

REF. TREK3023SSC

**SILVER CARBON LOOK**  
ASPECT SILVER CARBONE

REF. TREK3023SA

**BRUSHED ALUMINIUM**  
ALUMINIUM BROSSÉ

**NEW TREKKING 2 TRUMPETS CASE**  
ÉTUI 2 TROMPETTES  
NEW TREKKING

REF. TREK3024SC

**BLACK CARBON LOOK**  
ASPECT NOIR CARBONE

REF. TREK3024SSC

**SILVER CARBON LOOK**  
ASPECT SILVER CARBONE

REF. TREK3024SA

**BRUSHED ALUMINIUM**  
ALUMINIUM BROSSÉ

# HUNTING HORN TROMPE DE CHASSE

CLASSIC



NEW!

**CLASSIC ABS HUNTING HORN CASE**  
ÉTUI ABS CLASSIC POUR TROMPE DE CHASSE

REF. 3007AN    BLACK  
                                 NOIR



NEW!

**CLASSIC ABS HUNTING HORN CASE**  
ÉTUI ABS CLASSIC POUR TROMPE DE CHASSE

REF. 3007AG    GREY  
                                 GRIS



NEW!

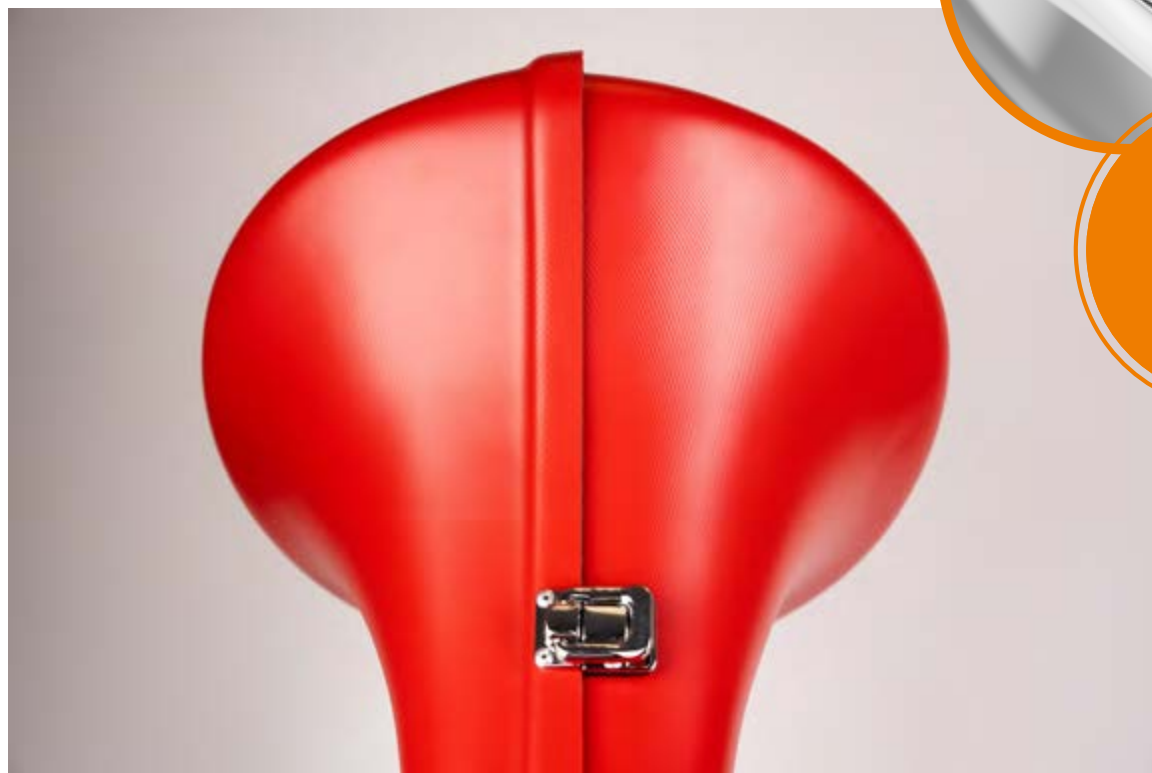
**CLASSIC ABS HUNTING HORN CASE**  
ÉTUI ABS CLASSIC POUR TROMPE DE CHASSE

REF. 3007AR    RED  
                                 ROUGE

---

# HUNTING HORN TROMPE DE CHASSE

---





# 2

## STRING CASES CORDES

BOWS ARCHETS  
CELLO VIOLONCELLE  
DOUBLE BASS CONTREBASSE  
VIOLA ALTO  
VIOLIN VIOLON

「bam」  
| original |

[www.bamcases.com](http://www.bamcases.com)



# BOWS ARCHETS

## HIGHTECH



**6-BOW HIGHTECH CASE FOR VIOLIN, VIOLA & CELLO** (ADAPTABLE FOR BAROQUE BOWS ON REQUEST) ÉTUI 6 ARCHETS HIGHTECH POUR VIOLON, ALTO & VIOLONCELLE (ADAPTABLE POUR ARCHETS BAROQUES SUR DEMANDE)

REF. 7001XLC BLACK CARBON LOOK  
ASPECT NOIR CARBONE

REF. 7001XLLB BLACK LAZURE  
NOIR LAZURE

REF. 7001XLSC SILVER CARBON LOOK  
ASPECT SILVER CARBONE

REF. 7001XLT TWEED  
TWEED

**4-FRENCH BOW HIGHTECH CASE FOR DOUBLE BASS** (ADAPTABLE FOR 2 BAROQUE BOWS ON REQUEST) ÉTUI 4 ARCHETS FRANCAIS HIGHTECH POUR CONTREBASSE (ADAPTABLE POUR 2 ARCHETS BAROQUES SUR DEMANDE)

REF. 7002XLC BLACK CARBON LOOK  
ASPECT NOIR CARBONE

REF. 7002XLLB BLACK LAZURE  
NOIR LAZURE

REF. 7002XLSC SILVER CARBON LOOK  
ASPECT SILVER CARBONE

REF. 7002XLT TWEED  
TWEED

**2-GERMAN BOW HIGHTECH CASE FOR DOUBLE BASS** (ADAPTABLE FOR 2 BAROQUE BOWS ON REQUEST) ÉTUI 2 ARCHETS ALLEMANDS CONTREBASSE HIGHTECH (ADAPTABLE POUR 2 ARCHETS BAROQUES SUR DEMANDE)

REF. 7003XLC BLACK CARBON LOOK  
ASPECT NOIR CARBONE

REF. 7003XLLB BLACK LAZURE  
NOIR LAZURE

REF. 7003XLSC SILVER CARBON LOOK  
ASPECT SILVER CARBONE

REF. 7003XLT TWEED  
TWEED

## PANTHER



**HIGHTECH 6-BOW CASE FOR VIOLIN, VIOLA & CELLO** (ADAPTABLE FOR BAROQUE BOWS ON REQUEST) ÉTUI 6 ARCHETS HIGHTECH POUR VIOLON, ALTO & VIOLONCELLE (ADAPTABLE POUR ARCHETS BAROQUES SUR DEMANDE)

REF. PANT7001XLN  
BLACK NOIR

REF. PANT7001XLG  
GREY GRIS

**HIGHTECH 4 FRENCH BOWS CASE FOR DOUBLE BASS** (ADAPTABLE FOR 2 BAROQUE BOWS ON REQUEST) ÉTUI 4 ARCHETS FRANCAIS HIGHTECH POUR CONTREBASSE (ADAPTABLE POUR 2 ARCHETS BAROQUES SUR DEMANDE)

REF. PANT7002XLN  
BLACK NOIR

REF. PANT7002XLG  
GREY GRIS

**HIGHTECH 2 GERMAN BOWS CASE FOR DOUBLE BASS** (ADAPTABLE FOR 2 BAROQUE BOWS ON REQUEST) ÉTUI 2 ARCHETS ALLEMANDS HIGHTECH POUR CONTREBASSE (ADAPTABLE POUR 2 ARCHETS BAROQUES SUR DEMANDE)

REF. PANT7003XLN  
BLACK NOIR

REF. PANT7003XLG  
GREY GRIS

# BOWS ARCHETS

## L'ÉTOILE



### L'ÉTOILE 6 BOWS FOR VIOLIN, VIOLA & CELLO CASE

(ADAPTABLE FOR BAROQUE BOWS ON REQUEST)

ÉTUI 6 ARCHETS VIOLON, ALTO & VIOLONCELLE L'ÉTOILE  
(ADAPTABLE POUR ARCHETS BAROQUES SUR DEMANDE)

 REF. ET7001XLC CHOCOLATE CHOCOLAT	 REF. ET7001XLB SKY BLUE BLEU CIEL
 REF. ET7001XLG MUD GREY GRIS MUD	 REF. ET7001XLRO PINK ROSE
 REF. ET7001XLC COGNAC COGNAC	 REF. ET7001XLGR GREIGE GREIGE
 REF. ET7001XLN BLACK NOIR	 REF. ET7001XLVT VIOLET VIOLET
 REF. ET7001XLR RED ROUGE	



### L'ÉTOILE 4 FRENCH BOWS CASE FOR DOUBLE BASS

(ADAPTABLE FOR 2 BAROQUE BOWS ON REQUEST)

ÉTUI 4 ARCHETS FRANCAIS POUR CONTREBASSE L'ÉTOILE  
(ADAPTABLE POUR 2 ARCHETS BAROQUES SUR DEMANDE)

 REF. ET7002XLC CHOCOLATE CHOCOLAT	 REF. ET7002XLB SKY BLUE BLEU CIEL
 REF. ET7002XLG MUD GREY GRIS MUD	 REF. ET7002XLRO PINK ROSE
 REF. ET7002XLC COGNAC COGNAC	 REF. ET7002XLGR GREIGE GREIGE
 REF. ET7002XLN BLACK NOIR	 REF. ET7002XLVT VIOLET VIOLET
 REF. ET7002XLR RED ROUGE	



### L'ÉTOILE 2 GERMAN BOWS CASES FOR DOUBLE BASS

(ADAPTABLE FOR BAROQUE BOWS ON REQUEST)

ÉTUI 2 ARCHETS ALLEMANDS POUR CONTREBASSE L'ÉTOILE  
(ADAPTABLE POUR ARCHETS BAROQUES SUR DEMANDE)

 REF. ET7003XLC CHOCOLATE CHOCOLAT	 REF. ET7003XLB SKY BLUE BLEU CIEL
 REF. ET7003XLG MUD GREY GRIS MUD	 REF. ET7003XLRO PINK ROSE
 REF. ET7003XLC COGNAC COGNAC	 REF. ET7003XLGR GREIGE GREIGE
 REF. ET7003XLN BLACK NOIR	 REF. ET7003XLVT VIOLET VIOLET
 REF. ET7003XLR RED ROUGE	

# CELLO VIOLONCELLE

## CUBE



LIMITED EDITION

ÉDITION LIMITÉE

**CUBE HIGHTECH SLIM CELLO CASE**  
ÉTUI VIOLONCELLE HIGHTECH SLIM CUBE

REF. CUB1005XLN LIMITED EDITION ÉDITION LIMITÉE

**CUBE SHAMROCK CELLO CASE WITHOUT WHEELS**  
ÉTUI VIOLONCELLE SHAMROCK CUBE SANS ROUES

REF. CUB1003XLN LIMITED EDITION ÉDITION LIMITÉE

**CUBE SHAMROCK CELLO CASE WITH WHEELS**  
ÉTUI VIOLONCELLE SHAMROCK CUBE AVEC ROUES

REF. CUB1003XWN LIMITED EDITION ÉDITION LIMITÉE

NEW!

NEW!

## SHADOW



**SHADOW HIGHTECH CELLO CASE WITHOUT WHEELS**  
ÉTUI VIOLONCELLE HIGHTECH SHADOW SANS ROUES

REF. SHA1002NN BLACK NOIR

**SHADOW HIGHTECH CELLO CASE WITH WHEELS**  
ÉTUI VIOLONCELLE HIGHTECH SHADOW AVEC ROUES

REF. SHA1002NWN BLACK NOIR

# CELLO VIOLONCELLE

## HIGHTECH



**HIGHTECH SLIM CELLO CASE** ÉTUI VIOLONCELLE HIGHTECH SLIM  
 REF. 1005XLB NAVY BLUE BLEU MARINE REF. 1005XLORG ORANGEY ORANGE REF. 1005XLW WHITE BLANC

**ADJUSTABLE CELLO CASE**  
 ÉTUI VIOLONCELLE AJUSTABLE  
 REF. 1002XLC BLACK CARBON LOOK ASPECT NOIR CARBONE REF. 1002XLSN GREY GRIS



**NEWTECH CELLO CASE WITHOUT WHEELS** ÉTUI VIOLONCELLE NEWTECH SANS ROULETTES  
 REF. 1002NB BLUE BLEU REF. 1002NM MINT MENTHE REF. 1002NN BLACK NOIR

**NEWTECH CELLO CASE WITH WHEELS** ÉTUI VIOLONCELLE NEWTECH AVEC ROULETTES  
 REF. 1002NWB BLUE BLEU REF. 1002NWM MINT MENTHE REF. 1002NWN BLACK NOIR



**HIGHTECH COMPACT CELLO CASE** ÉTUI VIOLONCELLE HIGHTECH COMPACT  
 REF. 1004XLC BLACK CARBON LOOK ASPECT NOIR CARBONE REF. 1004XLLB BLACK LAZURE NOIR LAZURE REF. 1004XLSC SILVER CARBON LOOK ASPECT SILVER CARBONE REF. 1004XLT TWEED TWEED



# CELLO VIOLONCELLE

## LA DÉFENSE



**LA DÉFENSE HIGHTECH SLIM CELLO CASE**  
ÉTUI VIOLONCELLE HIGHTECH SLIM LA DÉFENSE

REF. DEF1005XLA

BRUSHED ALUMINUM  
ALUMINIUM BROSSÉ

REF. DEF1005XLO

ORANGE  
ORANGE

## PANTHER



**PANTHER HIGHTECH SLIM CELLO CASE**  
ÉTUI VIOLONCELLE HIGHTECH SLIM PANTHER

REF. PANT1005XLN

BLACK  
NOIR

## SKY



NEW!

**SKY HIGHTECH SLIM CELLO CASE**  
ÉTUI VIOLONCELLE HIGHTECH SLIM SKY

REF. SKY1005XLG

GREY  
GRIS

L'ÉTOILE

# CELLO VIOLONCELLE

Real Leather  
Cover on Top  
Haut Hightech  
Recouvert de  
Cuir Véritable

L'ÉTOILE HIGHTECH SLIM CELLO CASE ÉTUI VIOLONCELLE HIGHTECH SLIM L'ÉTOILE



REF. ET1005XLC  
CHOCOLATE CHOCOLAT



REF. ET1005XLB  
SKY BLUE BLEU CIEL



REF. ET1005XLG  
MUD GREY GRIS MUD



REF. ET1005XLRO  
PINK ROSE



REF. ET1005XLC  
COGNAC COGNAC



REF. ET1005XLGR  
GREIGE GREIGE



REF. ET1005XLN  
BLACK NOIR



REF. ET1005XLV  
VIOLET VIOLET



REF. ET1005XLR  
RED ROUGE

# CELLO VIOLONCELLE

## SHAMROCK



### SHAMROCK HIGHTECH CELLO CASE WITHOUT WHEELS ÉTUI VIOLONCELLE HIGHTECH SHAMROCK SANS ROULETTES

REF. 1003XLB BLUE BLEU

REF. 1003XLN BLACK NOIR

REF. 1003XLOGR ORANGEY ORANGE

REF. 1003XLW WHITE BLANC

### SHAMROCK HIGHTECH CELLO CASE WITH WHEELS ÉTUI VIOLONCELLE HIGHTECH SHAMROCK AVEC ROULETTES

REF. 1003XLWB BLUE BLEU

REF. 1003XLWN BLACK NOIR

REF. 1003XLWORG ORANGEY ORANGE

REF. 1003XLW/W WHITE BLANC

## CLASSIC



### CLASSIC CELLO CASE WITHOUT WHEELS ÉTUI VIOLONCELLE CLASSIC SANS ROULETTES

REF. 1001SNN BLACK NOIR

REF. 1001SGC LIGHT GREY GRIS CLAIR

REF. 1001SRG POMEGRANATE RED ROUGE GRENADE

### CLASSIC CELLO CASE WITH WHEELS ÉTUI VIOLONCELLE CLASSIC AVEC ROULETTES

REF. 1001SWNN BLACK NOIR

REF. 1001SWGK LIGHT GREY GRIS CLAIR

REF. 1001SWRG POMEGRANATE RED ROUGE GRENADE

# CELLO VIOLONCELLE

**bam**  
SUPRÊME  
l'original

100%  
POLYCARBONATE

## HIGHTECH SUPRÊME



### SUPRÊME HIGHTECH POLYCARBONATE SLIM CELLO CASE ÉTUI VIOLONCELLE HIGHTECH SLIM POLYCARBONATE SUPRÊME

REF. SUP1005XLNN  
BLACK - BLACK VERSION  
NOIR - VERSION NOIRE

REF. SUP1005XLNS  
BLACK - SILVER VERSION  
NOIR - VERSION SILVER

REF. SUP1005XLCN  
CHAMPAGNE - BLACK VERSION  
CHAMPAGNE - VERSION NOIRE

REF. SUP1005XLCS  
CHAMPAGNE - SILVER VERSION  
CHAMPAGNE - VERSION SILVER

## ICE SUPRÊME



### SUPRÊME ICE HIGHTECH POLYCARBONATE CELLO CASE ÉTUI VIOLONCELLE HIGHTECH POLYCARBONATE ICE SUPRÊME

REF. SUP1005XLWN  
WHITE - BLACK VERSION  
BLANC - VERSION NOIRE

REF. SUP1005XLWS  
WHITE - SILVER VERSION  
BLANC - VERSION SILVER

REF. SUP1005XLWO  
WHITE - ORANGE VERSION  
BLANC - VERSION ORANGE



CELLO VIOLONCELLE

**bam**  
SUPRÊME  
l'original

100%  
POLYCARBONATE

ORCHESTRA SUPRÊME



Real Leather  
Cover on Top  
Haut Hightech  
Recouvert de  
Cuir Véritable



**ORCHESTRA SUPRÊME HIGHTECH CELLO CASE**  
ÉTUI VIOLONCELLE HIGHTECH ORCHESTRA SUPRÊME

REF. ORC1005XLN    BLACK  
NOIR

# CELLO VIOLONCELLE

## PERFORMANCE

### PERFORMANCE CELLO BAG HOUSSE VIOLONCELLE PERFORMANCE



REF. PERF1001SR  
CRANBERRY RED ROUGE CRANBERRY



REF. PERF1001SN  
BLACK NOIR



REF. PERF1001SC  
CAMEL CAMEL



REF. PERF1001SB  
SKY BLUE BLEU CIEL

# CELLO VIOLONCELLE

## HOODIES

MORE COLORS PLUS DE COULEURS:

REF. HO1000XLB BLUE BLEU

REF. HO1000XLG GREY GRIS

REF. HO1000XLM BROWN MARRON

REF. HO1000XLN BLACK NOIR

REF. HO1000XLR

REF. HO1000XLVT

REF. HO1000XLV

REF. HO1000XLRG

RED ROUGE

VIOLET VIOLET

GREEN VERT

ORANGE ORANGE



**HOODIES FOR HIGHTECH SLIM AND CLASSIC CELLO CASE**  
HOODIES POUR ÉTUI VIOLONCELLE HIGHTECH SLIM ET CLASSIC

REF. HO1000XLJ YELLOW JAUNE

## FLIGHT COVER



**FLIGHT COVER FOR HIGHTECH CELLO CASE**  
HOUSSE AVION POUR ÉTUI VIOLONCELLE HIGHTECH

REF. 1002H BLACK NOIR

# DOUBLE BASS CONTREBASSE

PERFORMANCE



More information about the size on:  
Plus d'infos sur les tailles :

[www.bamcases.com](http://www.bamcases.com)



## PERFORMANCE DOUBLE BASS COVER - S - HOUSSE CONTREBASSE PERFORMANCE - TAILLE S -

REF. PERF1104SC  
CAMEL CAMEL

REF. PERF1104SB  
SKY BLUE BLEU CIEL

REF. PERF1104SR  
CRANBERRY RED ROUGE CRANBERRY

REF. PERF1104SN  
BLACK NOIR

## PERFORMANCE DOUBLE BASS COVER - M - HOUSSE CONTREBASSE PERFORMANCE - TAILLE M -

REF. PERF1101SC  
CAMEL CAMEL

REF. PERF1101SB  
SKY BLUE BLEU CIEL

REF. PERF1101SR  
CRANBERRY RED ROUGE CRANBERRY

REF. PERF1101SN  
BLACK NOIR

## PERFORMANCE DOUBLE BASS COVER - L - HOUSSE CONTREBASSE PERFORMANCE - TAILLE L -

REF. PERF1102SC  
CAMEL CAMEL

REF. PERF1102SB  
SKY BLUE BLEU CIEL

REF. PERF1102SR  
CRANBERRY RED ROUGE CRANBERRY

REF. PERF1102SN  
BLACK NOIR

## PERFORMANCE DOUBLE BASS COVER - XL - HOUSSE CONTREBASSE PERFORMANCE - TAILLE XL -

REF. PERF1103SC  
CAMEL CAMEL

REF. PERF1103SB  
SKY BLUE BLEU CIEL

REF. PERF1103SR  
CRANBERRY RED ROUGE CRANBERRY

REF. PERF1103SN  
BLACK NOIR



# VIOLA ALTO

## CUBE



LIMITED EDITION

ÉDITION LIMITÉE

**CUBE HIGHTECH CONTOURED VIOLA CASE**  
ÉTUI ALTO HIGHTECH EN FORME CUBE

REF. CUB2200XLN

LIMITED EDITION  
ÉDITION LIMITÉE

BACK POCKET INCLUDED  
POCHE DOS INCLUSE



NEW SHAPE ADJUSTABLE UP TO 43 CM

ADAPTABLE JUSQU'À 43 CM



**CUBE HIGHTECH OBLONG VIOLA CASE**  
ÉTUI ALTO HIGHTECH RECTANGULAIRE CUBE

REF. CUB5301XLN

LIMITED EDITION  
ÉDITION LIMITÉE

## SHADOW



**SHADOW HIGHTECH CONTOURED VIOLA CASE**  
ÉTUI ALTO HIGHTECH EN FORME SHADOW

REF. SHA2200XLN

BLACK  
NOIR

# VIOLA ALTO

## LA DÉFENSE



**LA DÉFENSE HIGHTECH CONTOURED VIOLA CASE**  
ÉTUI ALTO HIGHTECH EN FORME LA DÉFENSE

REF. DEF2200XLA

BRUSHED ALUMINIUM  
ALUMINIUM BROSSÉ

REF. DEF2200XLO

ORANGE  
ORANGE



**LA DÉFENSE HIGHTECH OBLONG VIOLA CASE**  
ÉTUI ALTO HIGHTECH RECTANGULAIRE LA DÉFENSE

REF. DEF2201XLA

BRUSHED ALUMINIUM  
ALUMINIUM BROSSÉ

REF. DEF2201XLO

ORANGE  
ORANGE

**LA DÉFENSE HIGHTECH OBLONG COMPACT VIOLA CASE**  
ÉTUI ALTO HIGHTECH RECTANGULAIRE COMPACT LA DÉFENSE

REF. DEF5201XLA

BRUSHED ALUMINIUM  
ALUMINIUM BROSSÉ

REF. DEF5201XLO

ORANGE  
ORANGE



**LA DÉFENSE HIGHTECH OBLONG COMPACT VIOLA CASE**  
ÉTUI ALTO HIGHTECH RECTANGULAIRE COMPACT LA DÉFENSE

REF. DEF5301XLA

BRUSHED ALUMINIUM  
ALUMINIUM BROSSÉ

REF. DEF5301XLO

ORANGE  
ORANGE

# VIOLA ALTO

## PANTHER



**PANTHER HIGHTECH CONTOURED VIOLA CASE**  
ÉTUI ALTO HIGHTECH EN FORME PANTHER

REF. PANT2200XLN  
BLACK NOIR

REF. PANT2200XLG  
GREY GRIS



**PANTHER HIGHTECH OBLONG VIOLA CASE**  
ÉTUI ALTO HIGHTECH RECTANGULAIRE PANTHER

REF. PANT2201XLN  
BLACK NOIR

REF. PANT2201XLG  
GREY GRIS

**PANTHER HIGHTECH OBLONG COMPACT VIOLA CASE**  
ÉTUI ALTO HIGHTECH RECTANGULAIRE COMPACT PANTHER

REF. PANT5201XLN  
BLACK NOIR

REF. PANT5201XLG  
GREY GRIS



**PANTHER HIGHTECH OBLONG VIOLA CASE WITH POCKET**  
ÉTUI ALTO HIGHTECH RECTANGULAIRE AVEC POCHE PANTHER

REF. PANT2202XLN  
BLACK NOIR

REF. PANT2202XLG  
GREY GRIS

**PANTHER HIGHTECH OBLONG COMPACT VIOLA CASE WITH POCKET**  
ÉTUI ALTO HIGHTECH RECTANGULAIRE COMPACT AVEC POCHE PANTHER

REF. PANT5202XLN  
BLACK NOIR

REF. PANT5202XLG  
GREY GRIS

NEW SHAPE  
ADJUSTABLE  
UP TO 43 CM  
ADAPTABLE  
JUSQU'À 43 CM

BACK POCKET  
INCLUDED  
POCHE DOS  
INCLUSE



**PANTHER HIGHTECH OBLONG COMPACT VIOLA CASE**  
ÉTUI ALTO HIGHTECH RECTANGULAIRE COMPACT PANTHER

REF. PANT5301XLN  
BLACK NOIR

REF. PANT5301XLG  
GREY GRIS

# VIOLA ALTO

NEW SHAPE  
ADJUSTABLE  
UP TO 43 CM  
ADAPTABLE  
JUSQU'À 43 CM

BACK POCKET  
INCLUDED  
POCHE DOS  
INCLUSE

## HIGHTECH



### HIGHTECH OBLONG COMPACT VIOLA CASE WITHOUT POCKET ÉTUI ALTO HIGHTECH COMPACT SANS POCHE

REF. 5301XLSC SILVER CARBON LOOK  
ASPECT SILVER CARBONE

REF. 5301XLT TWEED

REF. 5301XLC BLACK CARBON LOOK  
ASPECT NOIR CARBONE

REF. 5301XLLB BLACK LAZURE  
NOIR LAZURE



### HIGHTECH OBLONG COMPACT VIOLA CASE WITHOUT POCKET ÉTUI ALTO HIGHTECH COMPACT SANS POCHE

REF. 5201XLC BLACK CARBON LOOK  
ASPECT NOIR CARBONE

REF. 5201XLLB BLACK LAZURE  
NOIR LAZURE



### HIGHTECH OBLONG COMPACT VIOLA CASE WITHOUT POCKET ÉTUI ALTO HIGHTECH COMPACT SANS POCHE

REF. 5201XLS GREY  
GRIS

REF. 5201XLSC SILVER CARBON LOOK  
ASPECT SILVER CARBONE

REF. 5201XLT TWEED



### HIGHTECH OBLONG COMPACT VIOLA CASE WITH POCKET ÉTUI ALTO HIGHTECH COMPACT AVEC POCHE

REF. 5202XLC BLACK CARBON LOOK  
ASPECT NOIR CARBONE

REF. 5202XLLB BLACK LAZURE  
NOIR LAZURE



### HIGHTECH OBLONG COMPACT VIOLA CASE WITH POCKET ÉTUI ALTO HIGHTECH COMPACT AVEC POCHE

REF. 5202XLS GREY  
GRIS

REF. 5202XLSC SILVER CARBON LOOK  
ASPECT SILVER CARBONE

REF. 5202XLT TWEED



# VIOLA ALTO

## HIGHTECH



### HIGHTECH OBLONG VIOLA CASE WITHOUT POCKET ÉTUI ALTO HIGHTECH SANS POCHE

REF. 2201XLC **BLACK CARBON LOOK**  
ASPECT NOIR CARBONE

REF. 2201XLT **TWEED**  
TWEED



### HIGHTECH OBLONG VIOLA CASE WITHOUT POCKET ÉTUI ALTO HIGHTECH SANS POCHE

REF. 2201XLS **GREY**  
GRIS

REF. 2201XSC **SILVER CARBON LOOK**  
ASPECT SILVER CARBONE

REF. 2201XLB **BLACK LAZURE**  
NOIR LAZURE



### HIGHTECH OBLONG VIOLA CASE WITH POCKET ÉTUI ALTO HIGHTECH AVEC POCHE

REF. 2202XLC **BLACK CARBON LOOK**  
ASPECT NOIR CARBONE

REF. 2202XLB **BLACK LAZURE**  
NOIR LAZURE



### HIGHTECH OBLONG VIOLA CASE WITH POCKET ÉTUI ALTO HIGHTECH AVEC POCHE

REF. 2202XLS **GREY**  
GRIS

REF. 2202XSC **SILVER CARBON LOOK**  
ASPECT SILVER CARBONE

REF. 2202XLT **TWEED**  
TWEED



**BACK CUSHION WITH POCKET FOR HIGHTECH OBLONG VIOLIN OR VIOLA CASE**  
COUSSIN DE DOS AVEC POCHE POUR ÉTUI VIOLON OU ALTO RECTANGULAIRE HIGHTECH

REF. 9100XP **BLACK**  
NOIR

# VIOLA ALTO

ADJUSTABLE  
UP TO 43 CM  
ADAPTABLE  
JUSQU'À 43 CM

## HIGHTECH



**HIGHTECH CONTOURED VIOLA CASE** ÉTUI ALTO HIGHTECH EN FORME

REF. 2200XLW  
WHITE  
BLANC



REF. 2200XLC  
BLACK CARBON LOOK  
ASPECT NOIR CARBONE



REF. 2200XLLB  
BLACK LAZURE  
NOIR LAZURE



**HIGHTECH CONTOURED VIOLA CASE** ÉTUI ALTO HIGHTECH EN FORME

REF. 2200XLB  
AZURE BLUE  
BLEU AZUR



REF. 2200XLS  
SILVER CARBON LOOK  
ASPECT SILVER CARBONE



REF. 2200XLT  
TWEED  
TWEED



**BACK CUSHION WITH POCKET FOR HIGHTECH CONTOURED VIOLIN OR VIOLA CASE**  
COUSSIN DOS AVEC POCHE VIOLON OU ALTO FORME

REF. 9200XP  
BLACK  
NOIR

## STYLUS



**STYLUS VIOLA CASE OBLONG 40 CM** ÉTUI ALTO RECTANGULAIRE 40 CM STYLUS

REF. 5140SN BLACK NOIR



REF. 5140SH RED ROUGE



REF. 5140SG GREY GRIS

**STYLUS VIOLA CASE OBLONG 41,5 CM** ÉTUI ALTO RECTANGULAIRE 41,5 CM STYLUS

REF. 5141SN BLACK NOIR

REF. 5141SH RED ROUGE

REF. 5141SG GREY GRIS



**STYLUS VIOLA CASE CONTOURED 41,5 CM** ÉTUI ALTO EN FORME 41,5 CM STYLUS

REF. 5101SN BLACK NOIR



REF. 5101SH RED ROUGE



REF. 5101SG GREY GRIS

# VIOLA ALTO

## L'ÉTOILE



### L'ÉTOILE OBLONG VIOLA CASE ÉTUI ALTO RECTANGULAIRE L'ÉTOILE

 REF. ET2201XLC CHOCOLATE CHOCOLAT	 REF. ET2201XLB SKY BLUE BLEU CIEL
 REF. ET2201XLG MUD GREY GRIS MUD	 REF. ET2201XLRO PINK ROSE
 REF. ET2201XLC COGNAC COGNAC	 REF. ET2201XLGR GREIGE GREIGE
 REF. ET2201XLN BLACK NOIR	 REF. ET2201XLVT VIOLET VIOLET
 REF. ET2201XLR RED ROUGE	



### L'ÉTOILE CONTOURED VIOLA CASE ÉTUI ALTO EN FORME L'ÉTOILE

 REF. ET2200XLC CHOCOLATE CHOCOLAT	 REF. ET2200XLB SKY BLUE BLEU CIEL
 REF. ET2200XLG MUD GREY GRIS MUD	 REF. ET2200XLRO PINK ROSE
 REF. ET2200XLC COGNAC COGNAC	 REF. ET2200XLGR GREIGE GREIGE
 REF. ET2200XLN BLACK NOIR	 REF. ET2200XLVT VIOLET VIOLET
 REF. ET2200XLR RED ROUGE	



### BACK CUSHION WITH POCKET FOR HIGHTECH OBLONG VIOLIN OR VIOLA CASE COUSSIN DE DOS AVEC POCHE POUR ÉTUI VIOLON OU ALTO HIGHTECH RECTANGULAIRE

 REF. ET9100XLC CHOCOLATE CHOCOLAT	 REF. ET9100XLB SKY BLUE BLEU CIEL
 REF. ET9100XLG MUD GREY GRIS MUD	 REF. ET9100XLRO PINK ROSE
 REF. ET9100XLC COGNAC COGNAC	 REF. ET9100XLGR GREIGE GREIGE
 REF. ET9100XLN BLACK NOIR	 REF. ET9100XLVT VIOLET VIOLET
 REF. ET9100XLR RED ROUGE	



### COUSSIN DOS AVEC POCHE VIOLON OU ALTO FORME L'ÉTOILE L'ÉTOILE BACK CUSHION WITH POCKET FOR HIGHTECH CONTOURED VIOLIN OR VIOLA CASES

 REF. ET9200XLC CHOCOLATE CHOCOLAT	 REF. ET9200XPB SKY BLUE BLEU CIEL
 REF. ET9200XLG MUD GREY GRIS MUD	 REF. ET9200XLRO PINK ROSE
 REF. ET9200XLC COGNAC COGNAC	 REF. ET9200XLGR GREIGE GREIGE
 REF. ET9200XLN BLACK NOIR	 REF. ET9200XLVT VIOLET VIOLET
 REF. ET9200XLR RED ROUGE	

VIOLA ALTO

**bam**  
SUPRÊME  
l'original

100%  
POLYCARBONATE

HIGHTECH SUPRÊME

NEW SHAPE  
ADJUSTABLE  
UP TO 43 CM  
ADAPTABLE  
JUSQU'À 43 CM

**SUPRÊME HIGHTECH OBLONG VIOLA CASE**  
ÉTUI ALTO HIGHTECH RECTANGULAIRE SUPRÊME

BACK POCKET  
INCLUDED  
POCHE DOS  
INCLUDE



REF. SUP5301XLN

CHAMPAGNE - BLACK VERSION  
CHAMPAGNE-VERSION NOIRE



REF. SUP5301XLS

CHAMPAGNE - SILVER VERSION  
CHAMPAGNE - VERSION SILVER

BACK POCKET  
INCLUDED  
POCHE DOS  
INCLUDE



REF. SUP5301XLNN

BLACK - BLACK VERSION  
NOIR - VERSION NOIRE



REF. SUP5301XLNS

BLACK - SILVER VERSION  
NOIR - VERSION SILVER



VIOLA ALTO



100%  
POLYCARBONATE

L'OPERA SUPRÊME

L'OPÉRA SUPRÊME HIGHTECH POLYCARBONATE CONTOURED VIOLA CASE  
ÉTUI ALTO HIGHTECH EN FORME POLYCARBONATE SUPRÊME L'OPÉRA



REF. OP2200XLNN

BLACK - BLACK VERSION  
NOIR - VERSION NOIRE



REF. OP2200XLNS

BLACK - SILVER VERSION  
NOIR - VERSION SILVER



REF. OP2200XLCN

CHAMPAGNE - BLACK VERSION  
CHAMPAGNE - VERSION NOIRE



REF. OP2200X LCS

CHAMPAGNE - SILVER VERSION  
CHAMPAGNE - VERSION SILVER

VIOLA ALTO

**bam**  
SUPRÊME  
l'original

100%  
POLYCARBONATE

ICE SUPRÊME

NEW SHAPE  
ADJUSTABLE  
UP TO 43 CM  
ADAPTABLE  
JUSQU'À 43 CM

**SUPRÊME ICE HIGHTECH OBLONG VIOLA CASE**  
ÉTUI ALTO HIGHTECH RECTANGULAIRE ICE SUPRÊME

BACK POCKET  
INCLUDED  
POCHE DOS  
INCLUDE



REF. SUP5301XLWN WHITE - BLACK VERSION  
BLANC - VERSION NOIRE



REF. SUP5301XLWS WHITE - SILVER VERSION  
BLANC - VERSION SILVER

BACK POCKET  
INCLUDED  
POCHE DOS  
INCLUDE



REF. SUP5301XLWO WHITE - ORANGE VERSION  
BLANC - VERSION ORANGE



VIOLA ALTO

**bam**  
SUPRÊME  
l'original

100%  
POLYCARBONATE

ICE SUPRÊME

**SUPRÊME ICE HIGHTECH CONTOURED VIOLA CASE**  
ÉTUI ALTO HIGHTECH EN FORME ICE SUPRÊME



REF. SUP2200XLWN  
WHITE - BLACK VERSION  
BLANC - VERSION NOIRE



REF. SUP2200XLWS  
WHITE - SILVER VERSION  
BLANC - VERSION SILVER



REF. SUP2200XLWO  
WHITE - ORANGE VERSION  
BLANC - VERSION ORANGE



# VIOLA ALTO

## ARTISTO

### ARTISTO VIOLA CASE ÉTUI ALTO ARTISTO



**VIOLA CASE 40 CM** ÉTUI ALTO 40 CM REF. 2040BB BLUE BLEU

**VIOLA CASE 40 CM** ÉTUI ALTO 40 CM REF. 2040BR RED ROUGE

**VIOLA CASE 41,5 CM** ÉTUI ALTO 41,5 CM REF. 2041BB BLUE BLEU

**VIOLA CASE 41,5 CM** ÉTUI ALTO 41,5 CM REF. 2041BR RED ROUGE

**VIOLA CASE 43 CM** ÉTUI ALTO 43 CM REF. 2043BB BLUE BLEU

**VIOLA CASE 43 CM** ÉTUI ALTO 43 CM REF. 2043BR RED ROUGE



**VIOLA CASE 40 CM** ÉTUI ALTO 40 CM REF. 2040BG GREY GRIS

**VIOLA CASE 40 CM** ÉTUI ALTO 40 CM REF. 2040BN BLACK NOIR

**VIOLA CASE 41,5 CM** ÉTUI ALTO 41,5 CM REF. 2041BG GREY GRIS

**VIOLA CASE 41,5 CM** ÉTUI ALTO 41,5 CM REF. 2041BN BLACK NOIR

**VIOLA CASE 43 CM** ÉTUI ALTO 43 CM REF. 2043BG GREY GRIS

**VIOLA CASE 43 CM** ÉTUI ALTO 43 CM REF. 2043BN BLACK NOIR

## CLASSIC



**CLASSIC VIOLA 41,5 CM + VIOLIN CASE** ÉTUI VIOLON + ALTO 41,5 CM CLASSIC

REF. 2006SF GREEN VERT

REF. 2006SM BLUE BLEU

REF. 2006SN BLACK NOIR



# VIOLA ALTO

ST. GERMAIN



**ST. GERMAIN VIOLA CASE STYLUS OBLONG 40 CM** ÉTUI ALTO STYLUS RECTANGULAIRE 40 CM ST. GERMAIN

REF. SG5140SB BLUE BLEU

REF. SG5140SC CHOCOLATE CHOCOLAT

REF. SG5140SG GREY GRIS

REF. SG5140SN BLACK NOIR

**ST. GERMAIN VIOLA CASE STYLUS OBLONG 41,5 CM** ÉTUI ALTO STYLUS RECTANGULAIRE 41,5 CM ST. GERMAIN

REF. SG5141SB BLUE BLEU

REF. SG5141SC CHOCOLATE CHOCOLAT

REF. SG5141SG GREY GRIS

REF. SG5141SN BLACK NOIR



**ST. GERMAIN VIOLA CASE STYLUS CONTOURED** ÉTUI ALTO STYLUS EN FORME ST. GERMAIN

REF. SG5101SB BLUE BLEU

REF. SG5101SC CHOCOLATE CHOCOLAT

REF. SG5101SG GREY GRIS

REF. SG5101SN BLACK NOIR

# VIOLA ALTO

LEO



**LEO STYLUS OBLONG 40CM VIOLA CASE**

ÉTUI ALTO STYLUS RECTANGULAIRE 40 CM LEO

REF. LEO5140SJ

LEO  
LEO

**LEO STYLUS OBLONG 41,5 CM VIOLA CASE**

ÉTUI ALTO STYLUS RECTANGULAIRE 41,5 CM LEO

REF. LEO5141SJ

LEO  
LEO



**LEO STYLUS CONTOURED 41,5 CM VIOLA CASE**

ÉTUI ALTO STYLUS EN FORME 41,5 CM LEO

REF. LEO5101SJ

LEO  
LEO

SIGNATURE



**SIGNATURE STYLUS OBLONG 40CM VIOLA CASE**

ÉTUI ALTO STYLUS RECTANGULAIRE 40CM SIGNATURE

REF. SIGN5140SN

BLACK  
NOIR

REF. SIGN5140SG

GREY  
GRIS

**SIGNATURE STYLUS OBLONG 41,5CM VIOLA CASE**

ÉTUI ALTO STYLUS RECTANGULAIRE 41,5CM SIGNATURE

REF. SIGN5141SN

BLACK  
NOIR

REF. SIGN5141SG

GREY  
GRIS



**SIGNATURE STYLUS CONTOURED 41,5CM VIOLA CASE**

ÉTUI ALTO STYLUS EN FORME SIGNATURE

REF. SIGN5101SN

BLACK  
NOIR

REF. SIGN5101SG

GREY  
GRIS

# VIOLA ALTO

## HOODIES

### HOODY FOR HIGHTECH OBLONG VIOLA CASE HOODY ÉTUI ALTO RECTANGULAIRE HIGHTECH



REF. HO2201XLORG ORANGE ORANGE

#### MORE COLORS PLUS DE COULEURS:

REF. HO2201XLB	BLUE BLEU	REF. HO2201XLR	RED ROUGE
REF. HO2201XLG	GREY GRIS	REF. HO2201XLVT	VIOLET VIOLET
REF. HO2201XLM	BROWN MARRON	REF. HO2201XLV	GREEN VERT
REF. HO2201XLN	BLACK NOIR	REF. HO2201XLJ	YELLOW JAUNE

### HOODY FOR HIGHTECH OBLONG VIOLA CASE COMPACT SIZE HOODY POUR ÉTUI ALTO RECTANGULAIRE HIGHTECH COMPACT SIZE



REF. HO5201XLJ YELLOW JAUNE

#### MORE COLORS PLUS DE COULEURS:

REF. HO5201XLB	BLUE BLEU	REF. HO5201XLR	RED ROUGE
REF. HO5201XLG	GREY GRIS	REF. HO5201XLVT	VIOLET VIOLET
REF. HO5201XLM	BROWN MARRON	REF. HO5201XLV	GREEN VERT
REF. HO5201XLN	BLACK NOIR	REF. HO5201XLORG	ORANGE ORANGE

### HOODY FOR HIGHTECH CONTOURED VIOLA CASE HOODY POUR ÉTUI ALTO HIGHTECH EN FORME



REF. HO2200XLB BLUE BLEU

#### MORE COLORS PLUS DE COULEURS:

REF. HO2200XLJ	YELLOW JAUNE	REF. HO2200XLR	RED ROUGE
REF. HO2200XLG	GREY GRIS	REF. HO2200XLVT	VIOLET VIOLET
REF. HO2200XLM	BROWN MARRON	REF. HO2200XLV	GREEN VERT
REF. HO2200XLN	BLACK NOIR	REF. HO2200XLORG	ORANGE ORANGE

## HOODIES SUBMARINE



### SUBMARINE HOODY FOR HIGHTECH CONTOURED VIOLA CASE HOODY SUBMARINE POUR ÉTUI ALTO HIGHTECH EN FORME

REF. SUB2200XLO ORANGE ORANGE

REF. SUB2200XLN BLACK NOIR

# VIOLIN VIOLON

CUBE



**CUBE HIGHTECH SLIM VIOLIN CASE**  
ÉTUI VIOLON HIGHTECH SLIM CUBE

REF. CUB2000XLN

LIMITED EDITION  
ÉDITION LIMITÉE



**CUBE HIGHTECH CONTOURED VIOLIN CASE**  
ÉTUI VIOLON HIGHTECH EN FORME CUBE

REF. CUB2002XLN

LIMITED EDITION  
ÉDITION LIMITÉE



**CUBE HIGHTECH CABIN VIOLIN CASE**  
ÉTUI VIOLON HIGHTECH CABIN CUBE

REF. CUB2003XLN

LIMITED EDITION  
ÉDITION LIMITÉE



**CUBE HIGHTECH OBLONG VIOLIN CASE**  
ÉTUI VIOLON HIGHTECH RECTANGULAIRE CUBE

REF. CUB2018XLN

LIMITED EDITION  
ÉDITION LIMITÉE



# VIOLIN VIOLON

## BAMTECH



**BAMTECH VIOLIN CASE**  
ÉTUI VIOLON BAMTECH

REF. BTECH2001SN

BLACK  
NOIR

## SHADOW



**SHADOW HIGHTECH SLIM VIOLIN CASE**  
ÉTUI VIOLON HIGHTECH SLIM SHADOW

REF. SHA2000XLN

BLACK  
NOIR



**SHADOW HIGHTECH CONTOURED VIOLIN CASE**  
ÉTUI VIOLON HIGHTECH EN FORME SHADOW

REF. SHA2002XLN

BLACK  
NOIR

## STAGE



**STAGE VIPER ELECTRIC VIOLIN CASE**  
ÉTUI VIOLON ELECTRIQUE VIPER STAGE

REF. STAGE2007IG

GREY THUNDER  
GRIS THUNDER

REF. STAGE2007IN

BLACK SABBATH  
NOIR SABBATH

# VIOLIN VIOLON

LEO



**LEO STYLUS VIOLIN CASE**  
ÉTUI VIOLON STYLUS LEO

REF. LEO5001SJ

LEO  
LEO

SIGNATURE



**SIGNATURE STYLUS VIOLIN CASE**  
ÉTUI VIOLON STYLUS SIGNATURE

REF. SIGN5001SN

BLACK  
NOIR



REF. SIGN5001SG

GREY  
GRIS



**SIGNATURE CLASSIC 3 VIOLIN CASE**  
ÉTUI VIOLON CLASSIC 3 SIGNATURE

REF. SIGN5003SN

BLACK  
NOIR



REF. SIGN5003SG

GREY  
GRIS

# VIOLIN VIOLON

## L'ÉTOILE



### L'ÉTOILE SLIM VIOLIN CASE ÉTUI VIOLON SLIM L'ÉTOILE

 REF. ET2000XLC CHOCOLATE CHOCOLAT	 REF. ET2000XLB SKY BLUE BLEU CIEL
 REF. ET2000XLG MUD GREY GRIS MUD	 REF. ET2000XLRO PINK ROSE
 REF. ET2000XLC COGNAC COGNAC	 REF. ET2000XLGR GREIGE GREIGE
 REF. ET2000XLN BLACK NOIR	 REF. ET2000XLVT VIOLET VIOLET
 REF. ET2000XLR RED ROUGE	



### L'ÉTOILE CONTOURED VIOLIN CASE ÉTUI VIOLON EN FORME L'ÉTOILE

 REF. ET2002XLC CHOCOLATE CHOCOLAT	 REF. ET2002XLB SKY BLUE BLEU CIEL
 REF. ET2002XLG MUD GREY GRIS MUD	 REF. ET2002XLRO PINK ROSE
 REF. ET2002XLC COGNAC COGNAC	 REF. ET2002XLGR GREIGE GREIGE
 REF. ET2002XLN BLACK NOIR	 REF. ET2002XLVT VIOLET VIOLET
 REF. ET2002XLR RED ROUGE	

### L'ÉTOILE OBLONG VIOLIN CASE ÉTUI VIOLON RECTANGULAIRE L'ÉTOILE

 REF. ET2001XLC CHOCOLATE CHOCOLAT	 REF. ET2001XLB SKY BLUE BLEU CIEL
 REF. ET2001XLG MUD GREY GRIS MUD	 REF. ET2001XLRO PINK ROSE
 REF. ET2001XLC COGNAC COGNAC	 REF. ET2001XLGR GREIGE GREIGE
 REF. ET2001XLN BLACK NOIR	 REF. ET2001XLVT VIOLET VIOLET
 REF. ET2001XLR RED ROUGE	



### BACK CUSHION WITH POCKET FOR HIGHTECH OBLONG VIOLIN OR VIOLA CASE COUSSIN DE DOS AVEC POCHÉ POUR ÉTUI VIOLON OU ALTO HIGHTECH RECTANGULAIRE

 REF. ET9100XLC CHOCOLATE CHOCOLAT	 REF. ET9100XLB SKY BLUE BLEU CIEL
 REF. ET9100XLG MUD GREY GRIS MUD	 REF. ET9100XLRO PINK ROSE
 REF. ET9100XLC COGNAC COGNAC	 REF. ET9100XLGR GREIGE GREIGE
 REF. ET9100XLN BLACK NOIR	 REF. ET9100XLVT VIOLET VIOLET
 REF. ET9100XLR RED ROUGE	



### BACK CUSHION WITH POCKET FOR HIGHTECH CONTOURED VIOLIN OR VIOLA CASES COUSSIN DOS AVEC POCHÉ VIOLON OU ALTO FORME L'ÉTOILE

 REF. ET9200XLC CHOCOLATE CHOCOLAT	 REF. ET9200XPB SKY BLUE BLEU CIEL
 REF. ET9200XLG MUD GREY GRIS MUD	 REF. ET9200XLRO PINK ROSE
 REF. ET9200XLC COGNAC COGNAC	 REF. ET9200XLGR GREIGE GREIGE
 REF. ET9200XLN BLACK NOIR	 REF. ET9200XLVT VIOLET VIOLET
 REF. ET9200XLR RED ROUGE	

# VIOLIN VIOLON

## HIGHTECH



**HIGHTECH CABIN VIOLIN CASE** ÉTUI VIOLON HIGHTECH CABINE

REF. 2003XLB  
NAVY BLUE  
BLEU MARINE



REF. 2003XLOGR  
ORANGEY  
ORANGE



REF. 2003XLW  
WHITE  
BLANC



**HIGHTECH CABIN VIOLIN CASE** ÉTUI VIOLON HIGHTECH CABINE

REF. 2003XLSC  
SILVER CARBON LOOK  
ASPECT SILVER CARBONE



REF. 2003XLC  
BLACK CARBON LOOK  
ASPECT NOIR CARBONE



REF. 2003XLT  
TWEED  
TWEED



**HIGHTECH SLIM VIOLIN CASE** ÉTUI VIOLON HIGHTECH SLIM

REF. 2000XLB  
NAVY BLUE  
BLEU MARINE



REF. 2000XLOGR  
ORANGEY  
ORANGE



REF. 2000XLW  
WHITE  
BLANC



# VIOLIN VIOLON

## HIGHTECH



**HIGHTECH CONTOURED VIOLIN CASE** ÉTUI VIOLON HIGHTECH EN FORME

REF. 2002XLW  
WHITE  
BLANC



REF. 2002XLC  
BLACK CARBON LOOK  
ASPECT NOIR CARBONE



REF. 2002XLLB  
BLACK LAZURE  
NOIR LAZURE



**HIGHTECH CONTOURED VIOLIN CASE** ÉTUI VIOLON HIGHTECH EN FORME

REF. 2002XLB  
AZURE BLUE  
BLEU AZUR



REF. 2002XLSC  
SILVER CARBON LOOK  
ASPECT SILVER CARBONE



REF. 2002XLT  
TWEED  
TWEED



**BACK CUSHION WITH POCKET FOR HIGHTECH CONTOURED VIOLIN OR VIOLA CASE**  
COUSSIN DOS AVEC POCHE VIOLON OU ALTO FORME

REF. 9200XP  
BLACK  
NOIR

**BACK CUSHION WITH POCKET FOR HIGHTECH SLIM VIOLIN CASE**  
COUSSIN DOS AVEC POCHE POUR ÉTUI VIOLON SLIM

REF. 9300XP  
BLACK  
NOIR

# VIOLIN VIOLON

## HIGHTECH



REF. 2001XLW WHITE  
BLANC



REF. 2001XLC BLACK CARBON LOOK  
ASPECT NOIR CARBONE



REF. 2001XLLB BLACK LAZURE  
NOIR LAZURE

### HIGHTECH OBLONG VIOLIN CASE WITHOUT POCKET ÉTUI VIOLON HIGHTECH RECTANGULAIRE SANS POCHE



REF. 2001XLS GREY  
GRIS



REF. 2001XLSC SILVER CARBON LOOK  
ASPECT SILVER CARBONE



REF. 2001XLT TWEED  
TWEED

### HIGHTECH OBLONG VIOLIN CASE WITHOUT POCKET ÉTUI VIOLON HIGHTECH RECTANGULAIRE SANS POCHE



REF. 2011XLW WHITE  
BLANC



REF. 2011XLC BLACK CARBON LOOK  
ASPECT NOIR CARBONE



REF. 2011XLLB BLACK LAZURE  
NOIR LAZURE

### HIGHTECH OBLONG VIOLIN CASE WITH POCKET ÉTUI VIOLON HIGHTECH RECTANGULAIRE AVEC POCHE



REF. 2011XLS GREY  
GRIS



REF. 2011XLSC SILVER CARBON LOOK  
ASPECT SILVER CARBONE



REF. 2011XLT TWEED  
TWEED

### HIGHTECH OBLONG VIOLIN CASE WITH POCKET ÉTUI VIOLON HIGHTECH RECTANGULAIRE AVEC POCHE



BACK CUSHION WITH POCKET FOR HIGHTECH OBLONG VIOLIN OR VIOLA CASE  
COUSSIN DE DOS AVEC POCHE POUR ÉTUI VIOLON OU ALTO RECTANGULAIRE HIGHTECH

REF. 9100XP BLACK  
NOIR

# VIOLIN VIOLON

NEW SHAPE  
ADJUSTABLE  
UP TO 43 CM  
ADAPTABLE  
JUSQU'À 43 CM

## HIGHTECH

BACK POCKET  
INCLUDED  
POCHE DOS  
INCLUDE



**HIGHTECH OBLONG VIOLIN CASE WITHOUT POCKET** ÉTUI VIOLON HIGHTECH RECTANGULAIRE SANS POCHE  
 REF. 2018XLC **BLACK CARBON LOOK** ASPECT NOIR CARBONE  
 REF. 2018XLLB **BLACK LAZURE** NOIR LAZURE

BACK POCKET  
INCLUDED  
POCHE DOS  
INCLUDE



**HIGHTECH OBLONG VIOLIN CASE WITHOUT POCKET** ÉTUI VIOLON HIGHTECH RECTANGULAIRE SANS POCHE  
 REF. 2018XLC **SILVER CARBON LOOK** ASPECT SILVER CARBONE  
 REF. 2018XLT **TWEED** TWEEED



**HIGHTECH TWO VIOLINS CASE** ÉTUI DEUX VIOLONS HIGHTECH  
 REF. 2005XLC **BLACK CARBON LOOK** ASPECT NOIR CARBONE  
 REF. 2005XLT **TWEED** TWEEED

## CLASSIC



**CLASSIC VIOLIN CASE** ÉTUI VIOLON CLASSIC  
 REF. 2002SF **GREEN VERT**  
 REF. 2002SM **BLUE BLEU**  
 REF. 2002SN **BLACK NOIR**

**CLASSIC TWO VIOLINS CASE** ÉTUI DEUX VIOLONS CLASSIC  
 REF. 2005SF **GREEN VERT**  
 REF. 2005SM **BLUE BLEU**  
 REF. 2005SN **BLACK NOIR**



**CLASSIC VIOLIN CASE III** ÉTUI VIOLON CLASSIC III  
 REF. 5003SV **GREEN VERT**  
 REF. 5003SB **BLUE BLEU**  
 REF. 5003SN **BLACK NOIR**

# VIOLIN VIOLON

## PANTHER



**PANTHER HIGHTECH SLIM VIOLIN CASE**  
ÉTUI VIOLON HIGHTECH SLIM PANTHER

REF. PANT2000XLN  
BLACK NOIR

REF. PANT2000XLG  
GREY GRIS



**PANTHER HIGHTECH CONTOURED VIOLIN CASE**  
ÉTUI VIOLON HIGHTECH EN FORME PANTHER

REF. PANT2002XLN  
BLACK NOIR

REF. PANT2002XLG  
GREY GRIS

NEW  
SHAPE

BACK POCKET  
INCLUDED  
POCHE DOS  
INCLUDE



**PANTHER HIGHTECH OBLONG VIOLIN CASE**  
ÉTUI VIOLON HIGHTECH RECTANGULAIRE PANTHER

REF. PANT2018XLN  
BLACK NOIR

REF. PANT2018XLG  
GREY GRIS



**PANTHER HIGHTECH OBLONG VIOLIN CASE WITH POCKET**  
ÉTUI VIOLON HIGHTECH RECTANGULAIRE AVEC POCHE PANTHER

REF. PANT2011XLN  
BLACK NOIR

REF. PANT2011XLG  
GREY GRIS

# VIOLIN VIOLON

## LA DÉFENSE



**LA DÉFENSE HIGHTECH SLIM VIOLIN CASE**  
ÉTUI VIOLON HIGHTECH SLIM LA DÉFENSE

REF. DEF2000XLA

BRUSHED ALUMINIUM  
ALUMINIUM BROSSÉ

REF. DEF2000XLO

ORANGE  
ORANGE



**LA DÉFENSE HIGHTECH CONTOURED VIOLIN CASE**  
ÉTUI VIOLON HIGHTECH EN FORME LA DÉFENSE

REF. DEF2002XLA

BRUSHED ALUMINIUM  
ALUMINIUM BROSSÉ

REF. DEF2002XLO

ORANGE  
ORANGE

NEW  
SHAPE

BACK POCKET  
INCLUDED  
POCHE DOS  
INCLUDE



**LA DÉFENSE HIGHTECH OBLONG VIOLIN CASE**  
ÉTUI VIOLON HIGHTECH RECTANGULAIRE LA DÉFENSE

REF. DEF2018XLA

BRUSHED ALUMINIUM  
ALUMINIUM BROSSÉ

REF. DEF2018XLO

ORANGE  
ORANGE



**BACK CUSHION WITH POCKET FOR HIGHTECH SLIM VIOLIN CASE**  
COUSSIN DOS AVEC POCHE POUR ÉTUI VIOLON SLIM

REF. 9300XP

BLACK  
NOIR

**BACK CUSHION WITH POCKET FOR HIGHTECH OBLONG VIOLIN CASE**  
COUSSIN DOS AVEC POCHE POUR ÉTUI VIOLON RECTANGULAIRE

REF. 9100XP

BLACK  
NOIR

**BACK CUSHION WITH POCKET FOR HIGHTECH CONTOURED VIOLIN CASE**  
COUSSIN DOS AVEC POCHE POUR ÉTUI VIOLON EN FORME

REF. 9200XP

BLACK  
NOIR



HIGHTECH SUPRÊME

SUPRÊME HIGHTECH OBLONG VIOLIN CASE  
ÉTUI VIOLON HIGHTECH RECTANGULAIRE SUPRÊME



REF. SUP2018XLCN CHAMPAGNE - BLACK VERSION  
CHAMPAGNE- VERSION NOIRE



REF. SUP2018X LCS CHAMPAGNE - SILVER VERSION  
CHAMPAGNE - VERSION SILVER



REF. SUP2018XLNN BLACK - BLACK VERSION  
NOIR - VERSION NOIRE



REF. SUP2018XLNS BLACK - SILVER VERSION  
NOIR - VERSION SILVER

# VIOLIN VIOLON

**bam**  
SUPRÊME  
l'original

100%  
POLYCARBONATE

## ORCHESTRA SUPRÊME



**ORCHESTRA SUPRÊME HIGHTECH CONTOURED VIOLIN CASE**  
ÉTUI VIOLON HIGHTECH EN FORME ORCHESTRA SUPRÊME

REF. ORC2002XLN    BLACK  
NOIR



**ORCHESTRA SUPRÊME HIGHTECH OBLONG VIOLIN CASE**  
ÉTUI VIOLON HIGHTECH RECTANGULAIRE ORCHESTRA SUPRÊME

REF. ORC2018XLN    BLACK  
NOIR

## L'OPÉRA SUPRÊME

**HIGHTECH POLYCARBONATE CONTOURED VIOLIN CASE L'OPÉRA SUPRÊME**  
ÉTUI VIOLON HIGHTECH EN FORME POLYCARBONATE SUPRÊME L'OPÉRA



REF. OP2002XLNN    BLACK - BLACK VERSION  
NOIR - VERSION NOIRE



REF. OP2002XLNS    BLACK - SILVER VERSION  
NOIR - VERSION SILVER



REF. OP2002XLCN    CHAMPAGNE - BLACK VERSION  
CHAMPAGNE - VERSION NOIRE



REF. OP2002XCLS    CHAMPAGNE - SILVER VERSION  
CHAMPAGNE - VERSION SILVER

VIOLIN VIOLON

**bam**  
SUPRÊME  
l'original

100%  
POLYCARBONATE

ICE SUPRÊME

**SUPRÊME ICE HIGHTECH POLYCARBONATE CONTOURED VIOLIN CASE**  
ÉTUI VIOLON HIGHTECH POLYCARBONATE EN FORME ICE SUPRÊME



REF. SUP2002XLWN WHITE - BLACK VERSION  
BLANC - VERSION NOIRE



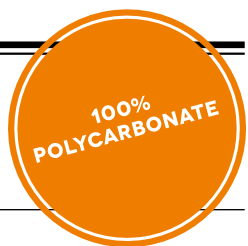
REF. SUP2002XLWS WHITE - SILVER VERSION  
BLANC - VERSION SILVER



REF. SUP2002XLWO WHITE - ORANGE VERSION  
BLANC - VERSION ORANGE



VIOLIN VIOLON



ICE SUPRÊME

SUPRÊME ICE HIGHTECH OBLONG VIOLIN CASE  
ÉTUI VIOLON HIGHTECH RECTANGULAIRE ICE SUPRÊME



REF. ICE2018XLWN WHITE - BLACK VERSION  
BLANC - VERSION NOIRE

REF. ICE2018XLWS WHITE - SILVER VERSION  
BLANC - VERSION SILVER



REF. ICE2018XLWO WHITE - ORANGE VERSION  
BLANC - VERSION ORANGE



# VIOLIN VIOLON

## ARTISTO



**ARTISTO VIOLIN CASE**  
ÉTUI VIOLON ARTISTO

REF. 2002BB BLUE BLEU

REF. 2002BR RED ROUGE



**ARTISTO VIOLIN CASE**  
ÉTUI VIOLON ARTISTO

REF. 2002BG GREY GRIS

REF. 2002BN BLACK NOIR

## STYLUS



**STYLUS VIOLIN CASE** ÉTUI VIOLON STYLUS  
REF. 5001SN BLACK NOIR

REF. 5001SR RED ROUGE

REF. 5001SG GREY GRIS



# VIOLIN VIOLON



*Classic Elegance*

ST. GERMAIN



**ST. GERMAIN VIOLIN CASE STYLUS** ÉTUI VIOLON ST.GERMAIN  
REF. SG5001SB BLUE BLEU

REF. SG5001SC CHOCOLATE CHOCOLAT

REF. SG5001SG GREY GRIS

REF. SG5001SN BLACK NOIR



**ST. GERMAIN VIOLIN CASE CLASSIC III** ÉTUI VIOLON CLASSIC III ST. GERMAIN  
REF. SG5003SB BLUE BLEU

REF. SG5003SC CHOCOLATE CHOCOLAT

REF. SG5003SG GREY GRIS

REF. SG5003SN BLACK NOIR

# VIOLIN VIOLON

## YOUNGSTER



**YOUNGSTER 3/4 1/2 VIOLIN CASE**  
ÉTUI VIOLON 3/4 1/2 YOUNGSTER

REF. YO2003SB BLUE  
BLEU

REF. YO2003SR RED  
ROUGE

REF. YO2003SO ORANGE  
ORANGE

**YOUNGSTER 1/4 1/8 VIOLIN CASE**  
ÉTUI VIOLON 1/4 1/8 YOUNGSTER

REF. YO2013SB BLUE  
BLEU

REF. YO2013SR RED  
ROUGE

REF. YO2013SO ORANGE  
ORANGE



**YOUNGSTER 3/4 1/2 VIOLIN CASE**  
ÉTUI VIOLON 3/4 1/2 YOUNGSTER

REF. YO2003SRC LIGHT PINK  
ROSE CLAIR

REF. YO2003SRF DARK PINK  
ROSE FONCÉ

REF. YO2003SVT VIOLET  
VIOLET

**YOUNGSTER 1/4 1/8 VIOLIN CASE**  
ÉTUI VIOLON 1/4 1/8 YOUNGSTER

REF. YO2013SRC LIGHT PINK  
ROSE CLAIR

REF. YO2013SRF DARK PINK  
ROSE FONCÉ

REF. YO2013SVT VIOLET  
VIOLET

# VIOLIN VIOLON

IKAT NASHVILLE



NASHVILLE



**IKAT NASHVILLE VIOLIN CASE**  
ÉTUI VIOLON IKAT NASHVILLE

REF. IKAT2001SCA CANVAS  
CANVAS

**NASHVILLE VIOLIN CASE**  
ÉTUI VIOLON NASHVILLE

REF. NASH2001SCA CANVAS  
CANVAS

PEAK PERFORMANCE



**PEAK PERFORMANCE COMPACT VIOLIN CASE**  
ÉTUI VIOLON COMPACT PEAK PERFORMANCE

REF. REF. PEAK2001SN BLACK & GREY  
NOIR & GRIS



**PEAK PERFORMANCE VIOLIN CASE**  
ÉTUI VIOLON PEAK PERFORMANCE

REF. PEAK2002BN BLACK & GREY  
NOIR & GRIS

**PEAK PERFORMANCE 3/4 1/2 VIOLIN CASE**  
ÉTUI VIOLON 3/4 1/2 PEAK PERFORMANCE

REF. PEAK2003SBN BLACK & GREY  
NOIR & GRIS

# VIOLIN VIOLON

## HOODIES

### HOODY FOR HIGHTECH OBLONG VIOLIN CASE HOODY POUR ÉTUI VIOLON RECTANGULAIRE HIGHTECH



REF. HO2001XLORG ORANGE ORANGE

**MORE COLORS** PLUS DE COULEURS:

REF. HO2001XLB	BLUE BLEU	REF. HO2001XLR	RED ROUGE
REF. HO2001XLG	GREY GRIS	REF. HO2001XLVT	VIOLET VIOLET
REF. HO2001XLM	BROWN MARRON	REF. HO2001XLV	GREEN VERT
REF. HO2001XLN	BLACK NOIR	REF. HO2001XLJ	YELLOW JAUNE

### HOODY FOR HIGHTECH CONTOURED VIOLIN CASE HOODY POUR ÉTUI VIOLON HIGHTECH EN FORME



REF. HO2002XLG GREY GRIS

**MORE COLORS** PLUS DE COULEURS:

REF. HO2002XLJ	YELLOW JAUNE	REF. HO2002XLR	RED ROUGE
REF. HO2002XLB	BLUE BLEU	REF. HO2002XLVT	VIOLET VIOLET
REF. HO2002XLM	BROWN MARRON	REF. HO2002XLV	GREEN VERT
REF. HO2002XLN	BLACK NOIR	REF. HO2002XLORG	ORANGE ORANGE

### HOODY FOR HIGHTECH CABIN VIOLIN CASE HOODY POUR ÉTUI VIOLON CABIN HIGHTECH



REF. HO2003XLB BLUE BLEU

**MORE COLORS** PLUS DE COULEURS:

REF. HO2003XLJ	YELLOW JAUNE	REF. HO2003XLR	RED ROUGE
REF. HO2003XLG	GREY GRIS	REF. HO2003XLVT	VIOLET VIOLET
REF. HO2003XLM	BROWN MARRON	REF. HO2003XLV	GREEN VERT
REF. HO2003XLN	BLACK NOIR	REF. HO2003XLORG	ORANGE ORANGE

# VIOLIN VIOLON

## HOODIES

### HOODY FOR HIGHTECH SLIM VIOLIN CASE HOODY POUR ÉTUI VIOLON SLIM HIGHTECH



REF. HO2000XLVT VIOLET VIOLET



REF. HO2000XLV GREEN VERT



REF. HO2000XLR RED ROUGE



REF. HO2000XLB BLUE BLEU



REF. HO2000XLG GREY GRIS



REF. HO2000XLJ YELLOW JAUNE



REF. HO2000XLM BROWN MARRON



REF. HO2000XLN BLACK NOIR



REF. HO2000XLORG ORANGE ORANGE



---

# VIOLIN VIOLON

---

HOODIES FUNCTION



**HOODY FUNCTION FOR HIGHTECH OBLONG VIOLIN CASE**  
HOODY FUNCTION POUR ÉTUI VIOLON RECTANGULAIRE HIGHTECH

REF. HO2001XLFUN

BLACK  
NOIR



**HOODY FUNCTION FOR HIGHTECH CONTOURED VIOLIN CASE**  
HOODY FUNCTION POUR ÉTUI VIOLON EN FORME HIGHTECH

REF. HO2002XLFUN

BLACK  
NOIR

# VIOLIN VIOLON

## HOODIES SUBMARINE



**SUBMARINE HOODY FOR HIGHTECH CONTOURED VIOLIN CASE**  
HOODY SUBMARINE POUR ÉTUI VIOLON HIGHTECH EN FORME


REF. SUB2002XLO

ORANGE  
ORANGE

REF. SUB2002XLN

BLACK  
NOIR





# 3

## GUITAR CASES GUITARES

CLASSICAL GUITAR GUITARE CLASSIQUE  
STEEL STRING ACOUSTIC GUITAR GUITARE ACOUSTIQUE  
BASS AND ELECTRIC GUITAR GUITARE ÉLECTRIQUE ET BASSE

「bam」  
l'original

[www.bamcases.com](http://www.bamcases.com)

# CLASSICAL GUITAR GUITARE CLASSIQUE

CUBE



**CUBE CLASSICAL GUITAR CASE**  
ÉTUI GUITARE CLASSIQUE CUBE

REF. CUB8002XLN

LIMITED EDITION  
ÉDITION LIMITÉE

BAMTECH



**BAMTECH CLASSICAL GUITAR GIGBAG**  
HOUSSE GUITARE CLASSIQUE BAMTECH

REF. BTECH8002SN

BLACK  
NOIR

# CLASSICAL GUITAR GUITARE CLASSIQUE

## CLASSIC ABS



**CLASSIC ABS CLASSICAL GUITAR CASE** ÉTUI GUITARE CLASSIQUE CLASSIC ABS  
REF. 8002SNN BLACK NOIR    REF. 8002SGC LIGHT GREY GRIS CLAIR    REF. 8002SRG POMEGRANATE RED ROUGE GRENADE

## CLASSIC



**CLASSIC GUITAR CASE** ÉTUI GUITARE CLASSIQUE

REF. 8001SN BLACK NOIR

REF. 8001SM BLUE BLEU



# CLASSICAL GUITAR GUITARE CLASSIQUE

HIGHTECH



**HIGHTECH CLASSICAL GUITAR CASE** ÉTUI DE GUITARE CLASSIQUE HIGHTECH

REF. 8002XLC **BLACK CARBON LOOK**  
ASPECT NOIR CARBONE

REF. 8002XLLB **BLACK LAZURE**  
NOIR LAZURE

REF. 8002XLSC **SILVER CARBON LOOK**  
ASPECT SILVER CARBONE



**HIGHTECH CLASSICAL GUITAR CASE** ÉTUI DE GUITARE CLASSIQUE HIGHTECH

REF. 8002XLT **TWEED**  
TWEED

REF. 8002XLW **WHITE**  
BLANC

# CLASSICAL GUITAR GUITARE CLASSIQUE

## LA DÉFENSE



**LA DÉFENSE HIGHTECH CLASSICAL GUITAR CASE**  
ÉTUI GUITARE CLASSIQUE HIGHTECH LA DÉFENSE

REF. DEF8002XLA

BRUSHED ALUMINUM  
ALUMINIUM BROSSÉ

REF. DEF8002XLO

ORANGE  
ORANGE

## PANTHER



**PANTHER HIGHTECH CLASSICAL GUITAR CASE**  
ÉTUI GUITARE CLASSIQUE HIGHTECH PANTHER

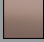
REF. PANT8002XLN

BLACK  
NOIR

# CLASSICAL GUITAR GUITARE CLASSIQUE

L'ÉTOILE



L'ÉTOILE CLASSICAL GUITAR CASE		ÉTUJ GUITARE CLASSIQUE L'ÉTOILE	
	REF. ET8002XLC CHOCOLATE CHOCOLAT		REF. ET8002XLB SKY BLUE BLEU CIEL
	REF. ET8002XLG MUD GREY GRIS MUD		REF. ET8002XLRO PINK ROSE
	REF. ET8002XLC COGNAC COGNAC		REF. ET8002XLGR GREIGE GREIGE
	REF. ET8002XLN BLACK NOIR		REF. ET8002XLVT VIOLET VIOLET
	REF. ET8002XLR RED ROUGE		

# CLASSICAL GUITAR GUITARE CLASSIQUE

## NASHVILLE



**NASHVILLE CLASSICAL GUITAR GIGBAG**  
HOUSSE GUITARE CLASSIQUE NASHVILLE

REF. NASH8002SCA    CANVAS  
CANVAS

## PEAK PERFORMANCE



**PEAK PERFORMANCE CLASSICAL GUITAR CASE**  
ÉTUI GUITARE CLASSIQUE PEAK PERFORMANCE

REF. PEAK8002SN    BLACK & GREY  
NOIR & GRIS

## IKAT NASHVILLE



**IKAT NASHVILLE CLASSICAL GUITAR GIGBAG**  
HOUSSE GUITARE CLASSIQUE IKAT NASHVILLE

REF. IKAT8002SCA    CANVAS  
CANVAS

## FLIGHT COVER



**FLIGHT COVER FOR HIGHTECH CLASSICAL GUITAR CASE**  
HOUSSE AVION POUR ÉTUI GUITARE HIGHTECH CLASSIQUE

REF. 800ZH    BACK  
NOIR

# CLASSICAL GUITAR GUITARE CLASSIQUE

## PERFORMANCE



### PERFORMANCE GUITAR CASE ÉTUI GUITARE PERFORMANCE

REF. PERF8002SC  
CAMEL CAMEL

REF. PERF8002SB  
SKY BLUE BLEU CIEL

REF. PERF8002SR  
CRANBERRY RED ROUGE CRANBERRY

REF. PERF8002SN  
BLACK NOIR

## HOODIES

### HOODY FOR HIGHTECH CLASSICAL GUITAR CASE HOODY POUR ÉTUI GUITARE CLASSIQUE HIGHTECH

REF. HO8002XLG GREY GRIS

#### MORE COLORS PLUS DE COULEURS:

REF. HO8002XLB	BLUE BLEU	REF. HO8002XLR	RED ROUGE
REF. HO8002XLJ	YELLOW JAUNE	REF. HO8002XLVT	VIOLET VIOLET
REF. HO8002XLM	BROWN MARRON	REF. HO8002XLV	GREEN VERT
REF. HO8002XLN	BLACK NOIR	REF. HO8002XLORG	ORANGE ORANGE







# STEEL STRING ACOUSTIC GUITAR GUITARE ACOUSTIQUE

## PANTHER



**PANTHER HIGHTECH DREADNOUGHT GUITAR CASE**  
ÉTUI GUITARE DREADNOUGHT HIGHTECH PANTHER

REF. PANT8003XLN    **BLACK**  
   **NOIR**

## FLIGHT COVER



**FLIGHT COVER FOR HIGHTECH DREADNOUGHT GUITAR CASE**  
HOUSSE AVION POUR ÉTUI GUITARE HIGHTECH DREADNOUGHT

REF. 8003H    **BLACK**  
   **NOIR**

## CLASSIC ABS



**CLASSIC ABS DREADNOUGHT GUITAR CASE**    ÉTUI GUITARE DREADNOUGHT CLASSIC ABS

REF. 8003SNN    **BLACK** NOIR    REF. 8003SGC    **LIGHT GREY** GRIS CLAIR    REF. 8003SRG    **POMEGRANATE RED** ROUGE GRENADE

# STEEL STRING ACOUSTIC GUITAR GUITARE ACOUSTIQUE

## HIGHTECH



**HIGHTECH ARCHTOP 16" GUITAR CASE**  
ÉTUI GUITARE ARCHTOP 16" HIGHTECH

REF. 8004XLC **BLACK CARBON LOOK**  
ASPECT NOIR CARBONE

REF. 8004XLT **TWEED**  
TWEED

## PANTHER



**PANTHER HIGHTECH ARCHTOP 16" GUITAR CASE**  
ÉTUI GUITARE ARCHTOP 16" HIGHTECH PANTHER

REF. PANT8004XLN **BLACK**  
NOIR

## FLIGHT COVER



**FLIGHT COVER FOR HIGHTECH ARCHTOP 16" GUITAR CASE**  
HOUSSE AVION POUR ÉTUI GUITARE HIGHTECH ARCHTOP 16"

REF. 8004H **BLACK**  
NOIR

# STEEL STRING ACOUSTIC GUITAR GUITARE ACOUSTIQUE

## HIGHTECH



**HIGHTECH SELMER TYPE GYPSY GUITAR CASE**  
ÉTUI GUITARE MANOUCHE TYPE SELMER HIGHTECH

REF. 8005XLC    **BLACK CARBON LOOK**    REF. 8005XLT    **TWEED**  
ASPECT NOIR CARBONE    TWEED

## PANTHER



**PANTHER HIGHTECH SELMER TYPE GYPSY GUITAR CASE**  
ÉTUI GUITARE MANOUCHE TYPE SELMER HIGHTECH PANTHER

REF. PANT8005XLN    **BLACK**  
NOIR

## FLIGHT COVER



**FLIGHT COVER FOR HIGHTECH GYPSY SELMER TYPE GUITAR CASE**  
HOUSSE AVION POUR ÉTUI GUITARE HIGHTECH MANOUCHE TYPE SELMER

REF. 8005H    **BLACK**  
NOIR

# STEEL STRING ACOUSTIC GUITAR GUITARE ACOUSTIQUE

## HIGHTECH



**HIGHTECH ARCHTOP 17" GUITAR CASE**  
ÉTUI GUITARE ARCHTOP 17" HIGHTECH

REF. 8006XLC **BLACK CARBON LOOK** REF. 8006XLT **TWEED**  
ASPECT NOIR CARBONE TWEED

## PANTHER



**PANTHER HIGHTECH ARCHTOP 17" GUITAR CASE**  
ÉTUI GUITARE ARCHTOP 17" HIGHTECH PANTHER

REF. PANT8006XLN **BLACK**  
NOIR

## HIGHTECH



**HIGHTECH 000 GUITAR CASE** ÉTUI GUITARE 000 HIGHTECH

REF. 8007XLC **BLACK CARBON LOOK** REF. 8007XLT **TWEED**  
ASPECT NOIR CARBONE TWEED

## PANTHER



**PANTHER HIGHTECH 000 GUITAR CASE**  
ÉTUI GUITARE 000 HIGHTECH PANTHER

REF. PANT8007XLN **BLACK**  
NOIR



# STEEL STRING ACOUSTIC GUITAR GUITARE ACOUSTIQUE

## HIGHTECH



**HIGHTECH OM GUITAR CASE** ÉTUI GUITARE OM HIGHTECH

REF. 8008XLC **BLACK CARBON LOOK**  
ASPECT NOIR CARBONE

REF. 8008XLT **TWEED**  
TWEED

## PANTHER



**PANTHER HIGHTECH OM GUITAR CASE**  
ÉTUI GUITARE OM HIGHTECH PANTHER

REF. PANT8008XLN **BLACK**  
NOIR

## HIGHTECH



**HIGHTECH GRAND CONCERT GUITAR CASE**  
ÉTUI GUITARE GRAND CONCERT HIGHTECH

REF. 8009XLC **BLACK CARBON LOOK**  
ASPECT NOIR CARBONE

REF. 8008XLT **TWEED**  
TWEED

## PANTHER



**PANTHER HIGHTECH GRAND CONCERT GUITAR CASE**  
ÉTUI GUITARE GRAND CONCERT HIGHTECH PANTHER

REF. PANT8009XLN **BLACK**  
NOIR

# BASS AND ELECTRIC GUITAR GUITARE ÉLECTRIQUE ET BASSE

IKAT NASHVILLE

NEW!



LIMITED EDITION

ÉDITION LIMITÉE

**IKAT NASHVILLE ELECTRIC GUITAR GIGBAG**  
HOUSSE GUITARE ÉLECTRIQUE IKAT NASHVILLE

REF. IKAT8100SCA

CANVAS  
CANVAS

**IKAT NASHVILLE BASS GUITAR GIGBAG**  
HOUSSE GUITARE BASSE IKAT NASHVILLE

REF. IKAT8200SCA

CANVAS  
CANVAS

# BASS AND ELECTRIC GUITAR GUITARE ÉLECTRIQUE ET BASSE

BAMTECH



**BAMTECH ELECTRIC GUITAR GIGBAG**  
HOUSSE GUITARE ÉLECTRIQUE BAMTECH

REF. BTECH8100SN    BLACK  
NOIR

NASHVILLE



**NASHVILLE ELECTRIC GUITAR GIGBAG**  
HOUSSE GUITARE ÉLECTRIQUE NASHVILLE

REF. NASH8100SCA    CANVAS  
CANVAS

BAMTECH



**BAMTECH BASS GUITAR GIGBAG**  
HOUSSE GUITARE BASSE BAMTECH

REF. BTECH8200SN    BLACK  
NOIR

NASHVILLE



**NASHVILLE BASS GUITAR GIGBAG**  
HOUSSE GUITARE BASSE NASHVILLE

REF. NASH8200SCA    CANVAS  
CANVAS

# ELECTRIC GUITAR GUITARE ÉLECTRIQUE

CREW

**CREW ELECTRIC GUITAR CASE**  
ÉTUI GUITARE ELECTRIQUE CREW



REF. 8100SNN    **BLACK**  
                                  **NOIR**



REF. 8100SGC    **LIGHT GREY**  
                                  **GRIS CLAIR**



REF. 8100SRG    **POMEGRANATE RED**  
                                  **ROUGE GRENADE**

---

# ELECTRIC GUITAR GUITARE ÉLECTRIQUE

---



ATTACH SYSTEM  
ON DEMAND

---

SYSTÈME D'ATTACHE  
SUR DEMANDE







4

TRADITIONAL  
CHINESE INSTRUMENTS

INSTRUMENTS  
TRADITIONNELS CHINOIS

PIPA PIPA  
ERHU ERHU  
GUQIN GUQIN

「bam」  
l'original

[www.bamcases.com](http://www.bamcases.com)



# PIPA PIPA

## L'ÉTOILE

### L'ÉTOILE HIGHTECH PIPA CASE WITH WHEELS ÉTUI PIPA HIGHTECH AVEC ROULETTES L'ÉTOILE

 REF. ETPIPAXLWC CHOCOLATE CHOCOLAT	 REF. ETPIPAXLWB SKY BLUE BLEU CIEL
 REF. ETPIPAXLWG MUD GREY GRIS MUD	 REF. ETPIPAXLWRO PINK ROSE
 REF. ETPIPAXLWCC COGNAC COGNAC	 REF. ETPIPAXLWGR GREIGE GREIGE
 REF. ETPIPAXLWN BLACK NOIR	 REF. ETPIPAXLWVT VIOLET VIOLET
 REF. ETPIPAXLR RED ROUGE	



## PANTHER



**PANTHER HIGHTECH PIPA CASE WITH WHEELS**  
ÉTUI PIPA HIGHTECH AVEC ROULETTES PANTHER

REF. PANTPIPAXLWN  
BLACK NOIR

REF. PANTPIPAXLWG  
GREY GRIS

# ERHU ERHU

## L'ÉTOILE

### L'ÉTOILE HIGHTECH ERHU CASE

ÉTUI ERHU HIGHTECH L'ÉTOILE



REF. ETERHUXLC  
CHOCOLATE CHOCOLAT



REF. ETERHUXLB  
SKY BLUE BLEU CIEL



REF. ETERHUXLG  
MUD GREY GRIS MUD



REF. ETERHUXLRO  
PINK ROSE



REF. ETERHUXLCC  
COGNAC COGNAC



REF. ETERHUXLGR  
GREIGE GREIGE



REF. ETERHUXLN  
BLACK NOIR



REF. ETERHUXLVT  
VIOLET VIOLET



REF. ETERHUXLR  
RED ROUGE



## PANTHER



### PANTHER HIGHTECH ERHU CASE

ÉTUI ERHU HIGHTECH PANTHER

REF. PANTERHUXLN  
BLACK NOIR

REF. PANTERHUXLG  
GREY GRIS

## LA DÉFENSE



### LA DÉFENSE HIGHTECH ERHU CASE

ÉTUI ERHU HIGHTECH LA DÉFENSE

REF. DEFERHUXLA

BRUSHED ALUMINIUM  
ALUMINIUM BROSSÉ

REF. DEFERHUXLO

ORANGE  
ORANGE

# ERHU ERHU

CLASSIC



**CLASSIC HIGHTECH ERHU CASE**  
ÉTUI ERHU HIGHTECH CLASSIC

REF. ERHUXLGC

GREY - BLACK VERSION  
GRIS - VERSION NOIR

REF. ERHUXLNS

BLACK - SILVER VERSION  
NOIR - VERSION SILVER

# GUQIN GUQIN



SUPRÊME HIGHTECH



100%  
POLYCARBONATE

**SUPREME HIGHTECH POLYCARBONATE GUQIN CASE**  
ÉTUI GUQIN SUPREME HIGHTECH POLYCARBONATE

REF. SUPGUQINXLNN

BLACK  
NOIR

REF. SUPGUQINXLCS

CHAMPAGNE - SILVER  
CHAMPAGNE - SILVER

# Bam Conservatoire

DISCIPLINE IS THE  
MOTHER OF SUCCESS



[www.bamcases.com](http://www.bamcases.com)



# BAM CONSERVATOIRE

GERMAN  
SYSTEM  
AVAILABLE



**BB CLARINET CASE**  
ÉTUI 1 CLARINETTE SIB

**1 TRUMPET CASE**  
ÉTUI 1 TROMPETTE

**OBOE CASE**  
ÉTUI HAUTOBOIS

**CORNET CASE**  
ÉTUI CORNET

REF. CONS3027SN    BLACK  
                                 NOIR

REF. CONS3023SN    BLACK  
                                 NOIR

REF. CONS3029SN    BLACK  
                                 NOIR

REF. CONS3035SN    BLACK  
                                 NOIR



**ALTO SAX CASE**  
ÉTUI SAX ALTO

**TENOR SAX CASE**  
ÉTUI SAX TENOR

**TENOR TROMBONE CASE**  
ÉTUI TROMBONE TENOR

REF. CONS3021SN    BLACK  
                                 NOIR

REF. CONS3022SN    BLACK  
                                 NOIR

REF. CONS3030SN    BLACK  
                                 NOIR



**1/4 1/8 VIOLIN CASE**  
ÉTUI VIOLON 1/4 1/8

**3/4 1/2 VIOLIN CASE**  
ÉTUI VIOLON 3/4 1/2

**4/4 VIOLIN CASE**  
ÉTUI VIOLON 4/4

REF. CONS2013SN    BLACK  
                                 NOIR

REF. CONS2003SN    BLACK  
                                 NOIR

REF. CONS2002SN    BLACK  
                                 NOIR

# MATIÈRES & COULEURS

## MATERIALS & COLORS

**PANTHER**



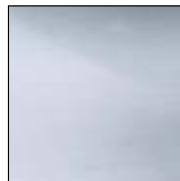
**PANTHER**



**LA DEFENSE**



**LA DEFENSE**



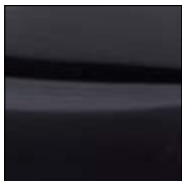
**BLACK**  
NOIR

**GREY**  
GRIS

**ORANGE**  
ORANGE

**BRUSHED ALUMINIUM**  
ALUMINIUM BROSSÉ

**STAGE**



**STAGE**



**NASHVILLE**



**IKAT NASHVILLE**



**NEW**

**BAMTECH**



**BLACK SABBATH**  
NOIR SABBATH

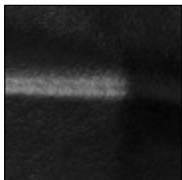
**GREY THUNDER**  
GRIS THUNDER

**CANVAS**  
CANVAS

**CANVAS**  
CANVAS

**BLACK**  
NOIR

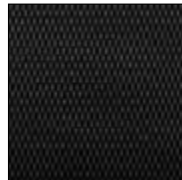
**ORCHESTRA SUPRÊME**



**ICE SUPRÊME**



**NEW TREKKING**



**NEW TREKKING**



**NEW TREKKING**



**BLACK**  
NOIR

**WHITE**  
BLANC

**BLACK CARBON LOOK**  
ASPECT NOIR CARBONE

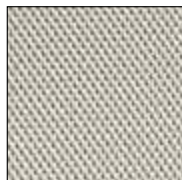
**SILVER CARBON LOOK**  
ASPECT SILVER CARBONE

**BRUSHED ALUMINIUM**  
ALUMINIUM BROSSÉ

**HIGHTECH SUPRÊME**



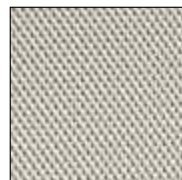
**HIGHTECH SUPRÊME**



**L'OPÉRA SUPRÊME**



**L'OPÉRA SUPRÊME**



**BLACK POLYCARBONATE**  
POLYCARBONATE NOIR

**CHAMPAGNE POLYCARBONATE**  
POLYCARBONATE CHAMPAGNE

**BLACK POLYCARBONATE**  
POLYCARBONATE NOIR

**CHAMPAGNE POLYCARBONATE**  
POLYCARBONATE CHAMPAGNE

# MATIÈRES & COULEURS

## MATERIALS & COLORS

PERFORMANCE



**SKY BLUE**  
BLEU CIEL

PERFORMANCE



**CRANBERRY RED**  
ROUGE CRANBERRY

PERFORMANCE



**CARAMEL**  
CARAMEL

PERFORMANCE



**BLACK**  
NOIR

PEAK



**BLACK AND GREY**  
NOIR ET GRIS

LEO



**LEO**  
LEO

ARTISTO



**BLUE**  
BLEU

ARTISTO



**RED**  
ROUGE

ARTISTO



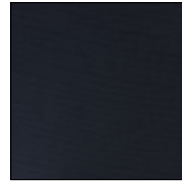
**GREY**  
GRIS

ARTISTO



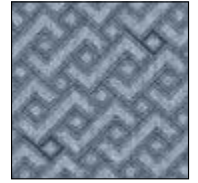
**BLACK**  
NOIR

SIGNATURE



**BLACK**  
NOIR

SIGNATURE



**GREY**  
GRIS

YOUNGSTER



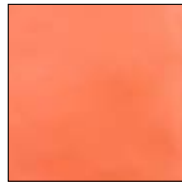
**BLUE**  
BLEU

YOUNGSTER



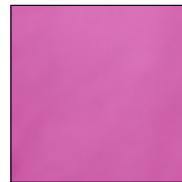
**RED**  
ROUGE

YOUNGSTER



**ORANGE**  
ORANGE

YOUNGSTER



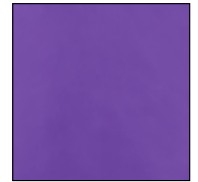
**DARK PINK**  
ROSE FONCÉ

YOUNGSTER



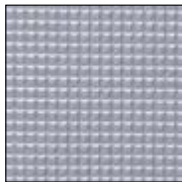
**LIGHT PINK**  
ROSE CLAIR

YOUNGSTER



**VIOLET**  
VIOLET

A+



**ALUMINUM**  
ALUMINIUM

A+



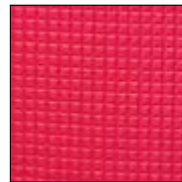
**BLUE**  
BLEU

A+



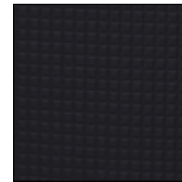
**ORANGE**  
ORANGE

A+



**RED**  
ROUGE

A+



**BLACK**  
NOIR

# MATIÈRES & COULEURS

## MATERIALS & COLORS

L'ÉTOILE



**BLACK**  
NOIR

L'ÉTOILE



**VIOLET**  
VIOLET

L'ÉTOILE



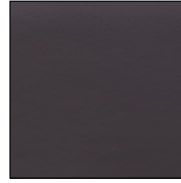
**GREIGE**  
GREIGE

L'ÉTOILE



**COGNAC**  
COGNAC

L'ÉTOILE



**CHOCOLATE**  
CHOCOLAT

L'ÉTOILE



**RED**  
ROUGE

L'ÉTOILE



**MUD GREY**  
GRIS MUD

L'ÉTOILE



**PINK**  
ROSE

L'ÉTOILE



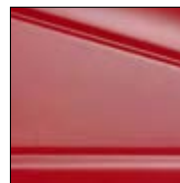
**SKY BLUE**  
BLEU CIEL

CREW



**BLACK**  
NOIR

CREW



**POMEGRANATE RED**  
ROUGE GRENADE

CREW



**LIGHT GREY**  
GRIS CLAIR

TREKKING



**BLACK**  
NOIR

TREKKING



**BLUE**  
BLEU

TREKKING



**GREEN**  
VERT

TREKKING



**RED**  
ROUGE

SKY



**GREY**  
GRIS

NEW

ST. GERMAIN



**BLUE**  
BLEU

ST. GERMAIN



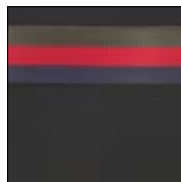
**CHOCOLATE**  
CHOCOLAT

ST. GERMAIN



**GREY**  
GRIS

ST. GERMAIN



**BLACK**  
NOIR

SHADOW



**BLACK**  
NOIR

CUBE



**LIMITED EDITION**  
EDITION LIMITEE

# MATIÈRES & COULEURS

## MATERIALS & COLORS

**NEWTECH**



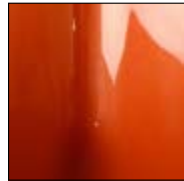
**BLACK**  
NOIR

**NEWTECH**



**BLUE**  
BLEU

**NEWTECH**



**TERRACOTTA**  
TERRACOTTA

**NEWTECH**



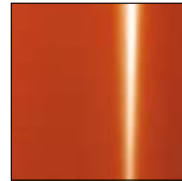
**MINT**  
MENTHE

**HIGHTECH**



**NAVY BLUE**  
BLEU MARINE

**HIGHTECH**



**ORANGY**  
ORANGE

**HIGHTECH**



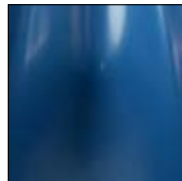
**WHITE**  
BLANC

**HIGHTECH**



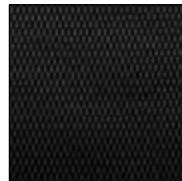
**GREY**  
GRIS

**HIGHTECH**



**AZURE BLUE**  
BLEU AZUR

**HIGHTECH**



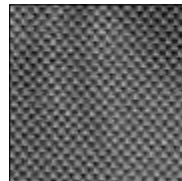
**BLACK CARBON LOOK**  
ASPECT NOIR CARBONE

**HIGHTECH**



**BLACK LAZURE**  
NOIR LAZURE

**HIGHTECH**



**SILVER CARBON LOOK**  
ASPECT SILVER CARBONE

**HIGHTECH**



**TWEED**  
TWEED

**HIGHTECH**



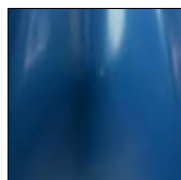
**BLACK**  
NOIR

**HIGHTECH**



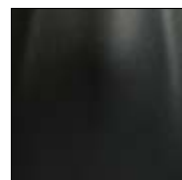
**LIGHT GREY**  
GRIS CLAIR

**SHAMROCK**



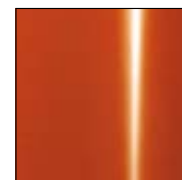
**AZURE BLUE**  
BLEU AZUR

**SHAMROCK**



**BLACK**  
NOIR

**SHAMROCK**



**ORANGY**  
ORANGE

**SHAMROCK**



**WHITE**  
BLANC

**CLASSIC FOR CELLO**  
POUR VIOLONCELLE



**BLACK**  
NOIR

**CLASSIC FOR CELLO**  
POUR VIOLONCELLE



**LIGHT GREY**  
GRIS CLAIR

**CLASSIC FOR CELLO**  
POUR VIOLONCELLE



**POMEGRANATE RED**  
ROUGE GRENADE

**CLASSIC**



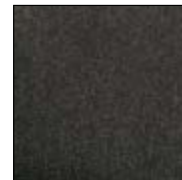
**GREEN**  
VERT

**CLASSIC**



**BLUE**  
BLEU

**CLASSIC**



**BLACK**  
NOIR



# MATIÈRES & COULEURS

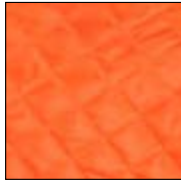
## MATERIALS & COLORS

HOODIES



**YELLOW**  
JAUNE

HOODIES



**ORANGE**  
ORANGE

HOODIES



**RED**  
ROUGE

HOODIES



**VIOLET**  
VIOLET

HOODIES



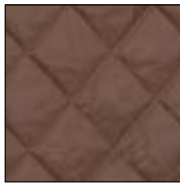
**BLUE**  
BLEU

HOODIES



**GREEN**  
VERT

HOODIES



**BROWN**  
MARRON

HOODIES



**GREY**  
GRIS

HOODIES



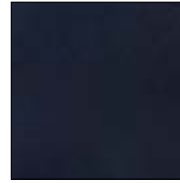
**BLACK**  
NOIR

SUBMARINE



**ORANGE**  
ORANGE

SUBMARINE



**BLACK**  
NOIR

FUNCTION



**BLACK**  
NOIR

CABINE



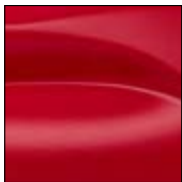
**LIGHT GREY**  
GRIS CLAIR

CABINE



**BLACK**  
NOIR

CABINE



**POMEGRANATE RED**  
ROUGE GRENADE

STYLUS



**GREY**  
GRIS

STYLUS



**BLACK**  
NOIR

STYLUS



**RED**  
ROUGE

SOFTPACK



**BLUE**  
BLEU

SOFTPACK



**MINT**  
MENTHE

SOFTPACK



**BLACK**  
NOIR

SOFTPACK



**TERRACOTTA**  
TERRACOTTA

**FLIGHT COVER  
FOR CELLO**  
POUR VIOLONCELLE



**BLACK**  
NOIR

**FLIGHT COVERS  
FOR GUITAR**  
POUR GUITARE



**BLACK**  
NOIR

NEW





**bam**  
original

WE CARE FOR YOUR INSTRUMENT





# ACCESSOIRES





# Accessories

WE CARE FOR YOUR INSTRUMENT



「bam」  
l'original

Designed by BAM in Normandie, France

[www.bamcases.com](http://www.bamcases.com)



# CORDES STRINGS



**COUVRE-CORDES**  
**INSTRUMENT BLANKET**

IC-0045 IC-0046  
VIOLON ALTO  
VIOLIN VIOLA



**POCHETTE EN SOIE**  
**SILK BAG**

IC-0047 IC-0048  
VIOLON ALTO  
VIOLIN VIOLA



**POCHETTE EN SOIE**  
**SILK BAG WITH DRAW STRING**

IC-0050  
VIOLON  
VIOLIN



**POCHETTE**  
DOSSIER / PARTITIONS  
**MUSIC POUCH**  
FILE / SHEET MUSIC

BC-0053



**POCHETTE ACCESSOIRES**  
**ACCESSORY POUCH**

BC-0055



**CHIFFON**  
VENTS  
**CLEANING CLOTH**  
WINDS

CC-0001 CC-0002  
30X40CM 40X60CM



**CHIFFON**  
CORDES  
**CLEANING CLOTH**  
STRINGS

CC-0003 CC-0004  
30X40CM 40X60CM

# SAC-À-DOS BACKPACKS

BAMTECH



NEW!

SAC-À-DOS BAMTECH POUR ÉTUI HIGHTECH  
BAMTECH BACKPACK FOR HIGHTECH CASE

BTECH9003N  
NOIR  
BLACK

PEAK



NEW!

SAC-À-DOS PEAK POUR ÉTUI HIGHTECH  
PEAK BACKPACK FOR HIGHTECH CASE

PEAK9003N  
NOIR  
BLACK

BAM FRANCE



NEW!

SAC-À-DOS BAMFRANCE POUR ÉTUI HIGHTECH  
BAMFRANCE BACKPACK FOR HIGHTECH CASE

CLAVIVALDI  
NOIR  
BLACK

HIGHTECH



SAC-À-DOS ERGONOMIQUE POUR ÉTUI DE VIOLONCELLE  
ERGONOMIC BACKPACK FOR CELLO CASE

9036  
NOIR  
BLACK

---

# SAC-À-DOS **BACKPACKS**

---

A+

SAC-À-DOS A+POUR ÉTUI HIGHTECH  
A+ **BACKPACK FOR HIGHTECH CASE**



A+A  
ALUMINIUM  
ALUMINIUM



A+B  
BLEU  
BLUE



A+N  
NOIR  
BLACK



A+O  
ORANGE  
ORANGE



A+R  
ROUGE  
RED

---

# VENTS WINDS

---

ÉCOUVILLON BASSON

SWAB BASSOON

SW-0010



ÉCOUVILLON  
SAXOPHONE ALTO

SWAB  
ALTO SAXOPHONE

SW-0013



ÉCOUVILLON  
SAXOPHONE TÉNOR

SWAB  
TÉNOR SAXOPHONE

SW-0015



ÉCOUVILLON  
SAXOPHONE SOPRANO

SWAB  
SOPRANO SAXOPHONE

SW-0017



ÉCOUVILLON  
CLARINETTES Sib OU La

SWAB  
Bb OR A CLARINET

SW-0007



ÉCOUVILLON  
CLARINETTES Sib OU La

SWAB  
Bb OR A CLARINET

SW-0006





**ÉCOUVILLON** HAUTBOIS

**SWAB** OBOE

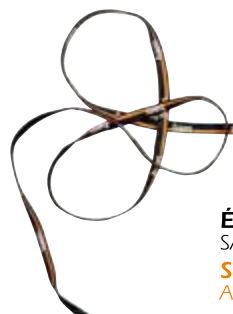
SW-0011



**ÉCOUVILLON** COR ANGLAIS

**SWAB** ENGLISH HORN

SW-0012



**ÉCOUVILLON**

SAXOPHONE ALTO OU CLARINETTE BASSE

**SWAB**

ALTO SAXOPHONE OR BASS CLARINET

SW-0009



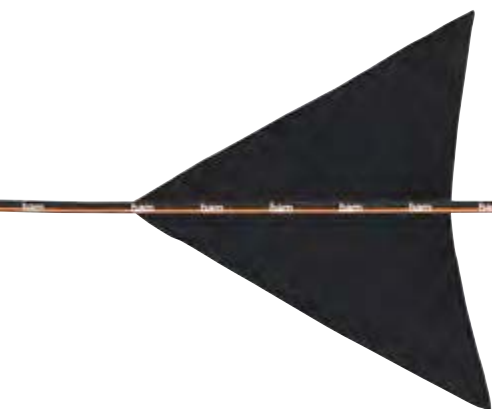
**ÉCOUVILLON**

SAXOPHONE TÉNOR

**SWAB**

TENOR SAXOPHONE

SW-0016



**ÉCOUVILLON**

SAXOPHONE SOPRANO AVEC BOCAL DÉMONTABLE UNIQUEMENT

**SWAB**

SOPRANO SAXOPHONE WITH DETACHABLE NECK ONLY

SW-0018



**ÉCOUVILLON**

CLARINETTE BASSE

**SWAB**

BASS CLARINET

SW-0008





**CHAUSSETTE POUR 1 BEC**  
**SOCK FOR 1 MOUTHPIECE**

MP-0027  
CLAR. Sib OU La Bb OR A CLAR.  
SAX. ALTO ALTO SAX.  
SAX. SOPRANO SOPRANO SAX.



**CHAUSSETTE POUR 1 BEC**  
**SOCK FOR 1 MOUTHPIECE**

MP-0028  
SAX. TENOR  
TENOR SAX.



**CHAUSSETTE POUR 1 BEC**  
**SOCK FOR 1 MOUTHPIECE**

MP-0029  
CLAR. BASSE BASS CLAR.  
SAX. BARYTON BARITONE SAX.  
SAX. BASSE BASS SAX.



**POCHETTE POUR 1 BEC**  
**POUCH FOR 1 MOUTHPIECE**

MP-0030  
CLAR. Sib OU La  
Bb OR A CLAR.  
SAX. ALTO  
ALTO SAX.  
SAX. SOPRANO  
SOPRANO SAX.

MP-0031  
CLAR. BASSE  
BASS CLAR.  
SAX. TENOR  
TENOR SAX.

MP-0032  
SAX. BASSE  
BASS SAX.  
SAX. BARYTON  
BARITONE SAX.



**POCHETTE POUR 1 BEC**  
**POUCH FOR 1 MOUTHPIECE**

MP-0033  
CLAR. Sib OU La  
Bb OR A CLAR.  
SAX. ALTO  
ALTO SAX.  
SAX. SOPRANO  
SOPRANO SAX.  
SAX. TENOR  
TENOR SAX.

MP-0034  
CLAR. BASSE  
BASS CLAR.  
SAX. BARYTON  
BARITONE SAX.  
SAX. BASSE  
BASS SAX.



**POCHETTE POUR 2 BECS**  
**POUCH FOR 2 MOUTHPIECES**

MP-0035  
CLAR. Sib OU La  
Bb OR A CLAR.  
SAX. ALTO  
ALTO SAX.  
SAX. SOPRANO  
SOPRANO SAX.

MP-0036  
SAX. TENOR  
TENOR SAX.



**POCHETTE POUR 6 BECS**  
**POUCH FOR 6 MOUTHPIECES**

MP-0038  
CLAR. Sib OU La Bb OR A CLAR.  
SAX. ALTO ALTO SAX.  
SAX. SOPRANO SOPRANO SAX.



**POCHETTE POUR BOCAL**  
**NECK POUCH**

NP-0039  
SAX. ALTO ALTO SAX.  
SAX. TENOR TENOR SAX.



**POCHETTE POUR BOCAL**  
**NECK POUCH**

NP-0040  
SAX. ALTO ALTO SAX.  
SAX. TENOR TENOR SAX.

# Accessories

WE CARE FOR YOUR INSTRUMENT



**MALETTE WEEKENDER**  
**WEEKENDER BRIEFCASE**

CV-0026

「bam」  
l'original

Designed by BAM in Normandie, France

[www.bamcases.com](http://www.bamcases.com)

SANGLE NÉOPRENE FASHION POUR ÉTUI HIGHTECH  
FASHION NEOPRENE STRAP FOR HIGHTECH CASE



9002NB  
NOIR & BLANC  
BLACK & WHITE



9002BR  
BLEU & ROUGE  
BLUE & RED



9002FR  
BLEU, BLANC, ROUGE  
FRENCH FLAG



9002CA  
CAMOUFLAGE  
CAMOUFLAGE



9002BU  
PAPILLON  
BUTTERFLY



9002BO  
BOHÈME  
BOHEMIA

SANGLE NYLON FASHION  
FASHION NYLON STRAP



9008NB  
NOIR & BLANC  
BLACK & WHITE



9008BR  
BLEU & ROUGE  
BLUE & RED



9008FR  
BLEU, BLANC, ROUGE  
FRENCH FLAG



9008CA  
CAMOUFLAGE  
CAMOUFLAGE



9008BU  
PAPILLON  
BUTTERFLY



9008BO  
BOHÈME  
BOHEMIA





**CB**  
**BAM**  
**FRANCE**  
Rue de la Vignerie  
14160 Dives-sur-Mer





*BON*

*V*  
*Q*  
*Y*  
*A*  
*C*  
*E*



**BAM**

FRANCE

TRAVEL IN STYLE

# VOCALISE

CLASSIC LUGGAGE



TRAVEL IN STYLE

**B.A.M.**  
**BAM**  
FRANCE

HANDMADE ESPECIALLY FOR YOU

[WWW.BAM-FRANCE.COM](http://WWW.BAM-FRANCE.COM)



GENUINE  
LEATHER



**CLASSIC**  
«ALLEGRO»  
MENS BAG  
MALETTE  
REF. CLALLENGRON



**CLASSIC**  
«ALLEGRA»  
WOMEN'S BAG  
SAC À MAIN  
REF. CLALLEGRA



**CLASSIC**  
«VIVACE»  
WEEKENDER BAG  
SAC WEEK-END  
REF. CLAVIVACE



**CLASSIC**  
«CHORUS»  
CABIN TROLLEY  
VALISE CABINE  
REF. CLACHORUS



**CLASSIC**  
«VIVALDI»  
BAGPACK  
SAC-À-DOS  
REF. CLAVIVALDI

NEW!



**CLASSIC**  
«ELISE»  
BELT BAG  
SAC CEINTURE  
REF. CLAELISE



**CLASSIC**  
«SONATA»  
CLUTCH  
POCHETTE  
REF. CLASONATA



**CLASSIC**  
«CHOPIN»  
CROSS OVER BAG  
SACOCHE CROSSOVER  
REF. CLACHOPIN



**CLASSIC**  
«PRELUDE»  
SHOULDER BAG  
SACOCHE BANDOULIERE  
REF. CLAPRELUDE

# VOCALISE

CLASSIC LUGGAGE



TRAVEL IN STYLE

**BAM**  
FRANCE

HANDMADE ESPECIALLY FOR YOU

[WWW.BAM-FRANCE.COM](http://WWW.BAM-FRANCE.COM)

GENUINE  
LEATHER  
COVER  
ON TOP



**CLASSIC**  
HIGHTECH SLIM CELLO CASE  
ÉTUI VIOLONCELLE HIGHTECH SLIM  
REF. CLA1005XLN



**CLASSIC**  
HIGHTECH CLASSICAL GUITAR CASE  
ÉTUI GUITARE HIGHTECH CLASSIQUE  
REF. CLA8002XLN



**CLASSIC**  
HIGHTECH OBLONG VIOLIN CASE  
ÉTUI VIOLON HIGHTECH RECTANGULAIRE  
REF. CLA2018XLN



**CLASSIC**  
HIGHTECH CONTOURED VIOLIN CASE  
ÉTUI VIOLON HIGHTECH EN FORME  
REF. CLA2002XLN



**CLASSIC**  
CLASSIC CABINE ALTO SAX CASE  
ÉTUI SAX ALTO CABINE CLASSIC  
REF. CLA4011SN



**CLASSIC**  
HIGHTECH CONTOURED VIOLA CASE  
ÉTUI ALTO HIGHTECH EN FORME  
REF. CLA2200XLN



**CLASSIC**  
CLASSIC CABINE TENOR SAX CASE  
ÉTUI SAX TENOR CABINE CLASSIC  
REF. CLA4012SN



**CLASSIC**  
HIGHTECH SLIM FLUTE CASE  
ÉTUI FLÛTE HIGHTECH SLIM  
REF. CLA4019XLN



**CLASSIC**  
COVER FOR HIGHTECH FLUTE CASE  
HOUSSE POUR ETUI FLÛTE HIGHTECH  
REF. CLABF4009XLN



**CLASSIC**  
COVER FOR HIGHTECH PICCOLO FLUTE CASE  
HOUSSE POUR ETUI FLÛTE PICCOLO HIGHTECH  
REF. CLABF4029XLN

NEW!



# VOCALISE

PEAK LUGGAGE



TRAVEL IN STYLE

**BAM**  
FRANCE

HANDMADE ESPECIALLY FOR YOU

[WWW.BAM-FRANCE.COM](http://WWW.BAM-FRANCE.COM)



**PEAK**  
«CHOPIN»  
CROSS OVER BAG  
SACOCHE CROSSOVER  
REF. PEAKCHOPIN



**PEAK**  
«VIVACE»  
WEEKENDER BAG  
SAC WEEK-END  
REF. PEAKVIVACE



**PEAK**  
«CHORUS»  
CABIN TROLLEY  
VALISE CABINE  
REF. PEAKCHORUS

# VOCALISE

HOODY LUGGAGE



TRAVEL IN STYLE

**BAM**

FRANCE

HANDMADE ESPECIALLY FOR YOU

[WWW.BAM-FRANCE.COM](http://WWW.BAM-FRANCE.COM)

WITH REAL  
LEATHER



**HOODY**  
«CHOPIN»  
CROSS OVER BAG  
SACOCHE CROSSOVER  
REF. BFHOCHOPIN



**HOODY**  
«VIVACE»  
WEEKENDER BAG  
SAC WEEK-END  
SIZE S / TAILLE S: REF. BFHOVIVACES  
SIZE XL / TAILLE XL: REF. BFHOVIVACEXL



**HOODY**  
«CHORUS»  
CABIN TROLLEY  
VALISE CABINE  
REF. BFHOCHORUS

EXISTING COLORS:



CHECK THE AVAILABILITY  
OF THESE COLORS  
WITH OUR SALES TEAM



**HOODY**

FOR HIGHTECH SLIM AND CLASSIC CELLO CASE  
POUR ÉTUI VIOLONCELLE HIGHTECH SLIM ET CLASSIC

REF. BFHO1000XLV GREEN VERT



**HOODY**

FOR HIGHTECH CLASSICAL GUITAR CASE  
POUR ÉTUI GUITARE CLASSIQUE HIGHTECH

REF. BFHO8002XLR RED ROUGE

REF. BFHO1000XLB	BLUE BLEU	REF. BFHO1000XLR	RED ROUGE
REF. BFHO1000XLG	GREY GRIS	REF. BFHO1000XLVT	VIOLET VIOLET
REF. BFHO1000XLM	BROWN MARRON	REF. BFHO1000XLJ	YELLOW JAUNE
REF. BFHO1000XLN	BLACK NOIR	REF. BFHO1000XLORG	ORANGE ORANGE

REF. BFHO8002XLB	BLUE BLEU	REF. BFHO8002XLV	GREEN VERT
REF. BFHO8002XLG	GREY GRIS	REF. BFHO8002XLVT	VIOLET VIOLET
REF. BFHO8002XLM	BROWN MARRON	REF. BFHO8002XLJ	YELLOW JAUNE
REF. BFHO8002XLN	BLACK NOIR	REF. BFHO8002XLORG	ORANGE ORANGE



**HOODY**

FOR HIGHTECH OBLONG VIOLIN CASE  
POUR ÉTUI VIOLON RECTANGULAIRE HIGHTECH

REF. BFHO2001XLORG ORANGE ORANGE



**HOODY**

FOR HIGHTECH OBLONG VIOLA CASE BIG SIZE  
POUR ÉTUI ALTO RECTANGULAIRE HIGHTECH

REF. BFHO2201XLN BLACK NOIR

REF. BFHO2001XLB	BLUE BLEU	REF. BFHO2001XLR	RED ROUGE
REF. BFHO2001XLG	GREY GRIS	REF. BFHO2001XLVT	VIOLET VIOLET
REF. BFHO2001XLM	BROWN MARRON	REF. BFHO2001XLJ	YELLOW JAUNE
REF. BFHO2001XLN	BLACK NOIR	REF. BFHO2001XLV	GREEN VERT

REF. BFHO2201XLB	BLUE BLEU	REF. BFHO2201XLR	RED ROUGE
REF. BFHO2201XLG	GREY GRIS	REF. BFHO2201XLVT	VIOLET VIOLET
REF. BFHO2201XLM	BROWN MARRON	REF. BFHO2201XLJ	YELLOW JAUNE
REF. BFHO2201XLV	GREEN VERT	REF. BFHO2201XLORG	ORANGE ORANGE





**HOODY**

FOR HIGHTECH CONTOURED VIOLIN CASE  
POUR ÉTUI VIOLON EN FORME HIGHTECH

REF. BFHO2002XLORG ORANGE ORANGE



**HOODY**

FOR HIGHTECH CONTOURED VIOLA CASE  
POUR ÉTUI ALTO EN FORME HIGHTECH

REF. BFHO2200XVLT VIOLET VIOLET

REF. BFHO2002XLB	BLUE BLEU	REF. BFHO2002XLR	RED ROUGE
REF. BFHO2002XLG	GREY GRIS	REF. BFHO2002XLVT	VIOLET VIOLET
REF. BFHO2002XLM	BROWN MARRON	REF. BFHO2002XLJ	YELLOW JAUNE
REF. BFHO2002XLN	BLACK NOIR	REF. BFHO2002XLV	GREEN VERT

REF. BFHO2200XLB	BLUE BLEU	REF. BFHO2200XLR	RED ROUGE
REF. BFHO2200XLG	GREY GRIS	REF. BFHO2200XLV	GREEN VERT
REF. BFHO2200XLM	BROWN MARRON	REF. BFHO2200XLJ	YELLOW JAUNE
REF. BFHO2200XLN	BLACK NOIR	REF. BFHO2200XLORG	ORANGE ORANGE



**HOODY**

FOR HIGHTECH OBLONG VIOLA CASE COMPACT SIZE  
POUR ÉTUI ALTO COMPACT RECTANGULAIRE HIGHTECH

REF. BFHO5201XLVT VIOLET VIOLET



**HOODY**

FOR HIGHTECH SLIM VIOLIN CASE  
POUR ÉTUI VIOLON SLIM HIGHTECH

REF. BFHO2000XLJ YELLOW JAUNE

REF. BFHO5201XLB	BLUE BLEU	REF. BFHO5201XLR	RED ROUGE
REF. BFHO5201XLG	GREY GRIS	REF. BFHO5201XLV	GREEN VERT
REF. BFHO5201XLM	BROWN MARRON	REF. BFHO5201XLJ	YELLOW JAUNE
REF. BFHO5201XLN	BLACK NOIR	REF. BFHO5201XLORG	ORANGE ORANGE

REF. BFHO2000XLB	BLUE BLEU	REF. BFHO2000XLR	RED ROUGE
REF. BFHO2000XLG	GREY GRIS	REF. BFHO2000XLVT	VIOLET VIOLET
REF. BFHO2000XLM	BROWN MARRON	REF. BFHO2000XLV	GREEN VERT
REF. BFHO2000XLN	BLACK NOIR	REF. BFHO2000XLORG	ORANGE ORANGE

# SILK

---





STRINGS COVER FOR VIOLIN  
IN NATURAL SILK  
COUVRE CORDES POUR VIOLON  
EN SOIE NATURELLE  
REF. BFIC-0045



PETIT CARRÉ  
PETIT CARRÉ  
REF. CARRES



GRAND CARRÉ  
GRAND CARRÉ  
REF. CARREL



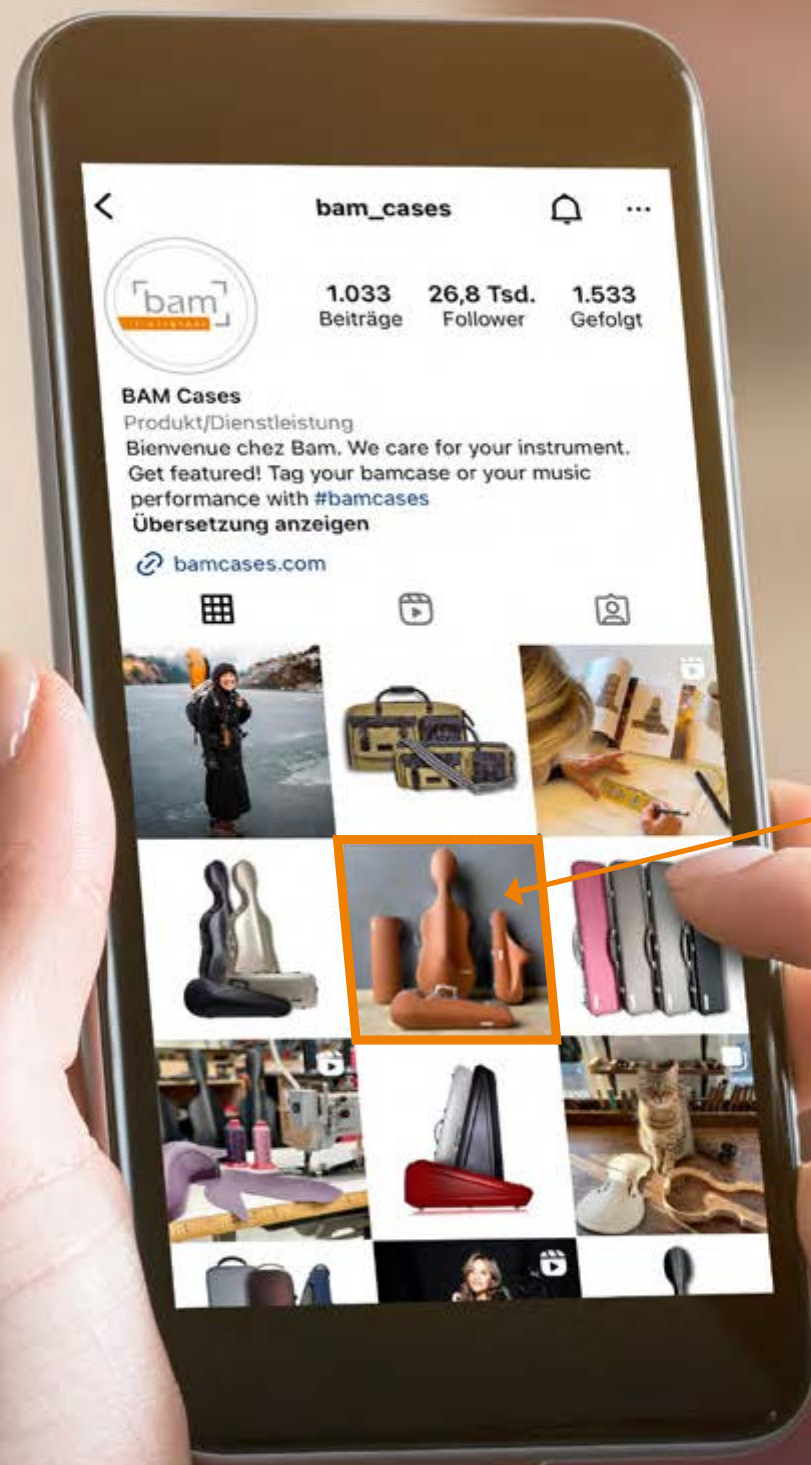
SINGLE LAYER SILK BAG WITH LACE  
FOR VIOLIN  
POCHETTE EN SOIE SIMPLE ÉPAISSEUR  
AVEC CORDON POUR VIOLON  
REF. BFIC-0050



DOUBLE LAYER SILK BAG  
FOR VIOLIN  
POCHETTE EN SOIE  
DOUBLE ÉPAISSEUR POUR VIOLON  
REF. BFIC-0047









# Instagram

## GUIDE

**How to get featured on our  
BAM Instagram account!**

**Comment figurer sur notre page  
officielle Instagram?**



**#bamcases**



# 1. Beautiful pictures



Create a **good-looking display with BAM cases** at your store and take a few beautiful pictures or Reels

Créez **un espace réservé aux étuis BAM** dans votre magasin et prenez quelques photos ou réels.



# 2. Delivery pictures

**YOU GOT A DELIVERY OF NEW BAM CASES?**

**YEAH!** The community loves unboxing videos and pictures - take the chance and show everyone which cases you have in stock.

**VOUS VENEZ DE RECEVOIR UNE LIVRAISON D'ÉTUIS BAM ?**

**Parfait !** Notre communauté adore les photos et vidéos d'unboxing – profitez en pour faire savoir à tout le monde ce que vous avez en stock.



# 3. Happy customers

**YOU MADE A CUSTOMER HAPPY WITH A NEW BAM CASE?**

**GREAT!** Capture the moment and share the picture on social media. We'll share your post and make others aware of your shop.

**VOUS VENEZ DE FAIRE UN HEUREUX AVEC UN ÉTUI BAM ?**

**Super !** Prenez quelques photos et partagez-les sur les réseaux. Nous partagerons votre post et ainsi nous vous aiderons à faire connaître votre magasin.



**#bamcases**



## 4. Tag us!

Make sure you tag us **@bam\_cases** and use the hashtag **#bamcases**

Taguez nous **@bam\_cases** et utilisez le hashtag **#bamcases**

**@bam\_cases**



## 5. «bam» - Gifs!

### USE THE BAM GIFS!

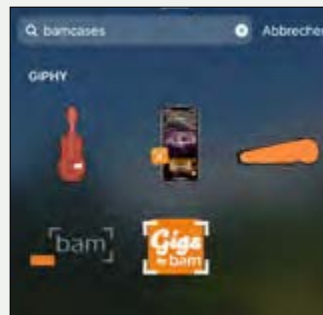
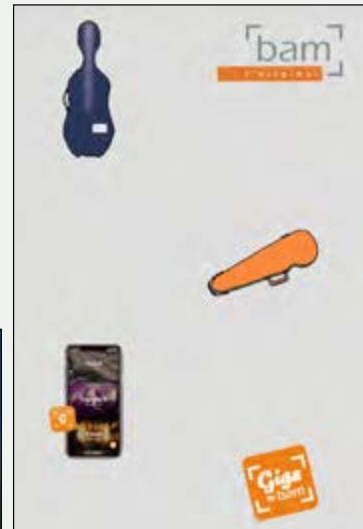
Simply unique! Do you already know our Bam GIFS on Instagram?

Enter **bamcases** in the search field and pimp your story.

### UTILISEZ LES GIFS BAM !

Nous avons désormais nos propres GIFS ! Le saviez-vous ?

Tapez **bamcases** dans le champ recherche et personnalisez votre story!





## 6. Add music!

Did you know that you can **add music** to your pictures and stories and take your content to the next level?

Saviez vous que vous pouvez désormais **ajouter de la musique** à vos photos et vos stories ?

## 7. Contact us!

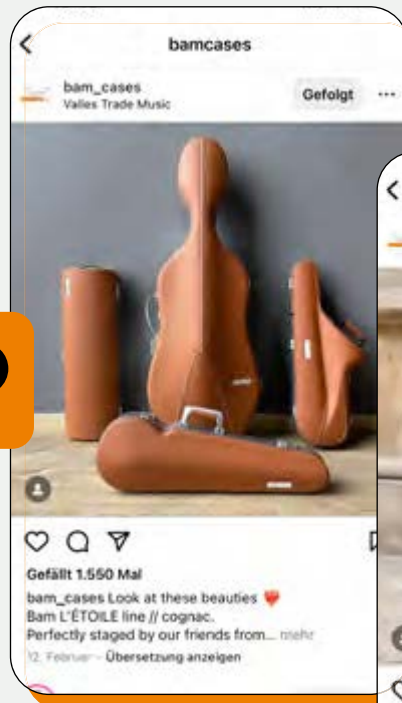
Please feel free to direct message us on Instagram if you have any questions about how to create nice content - **we're always happy to help.**

N'hésitez pas à nous contacter si vous avez des questions au sujet de la création de contenu, **nous serons ravis de vous aider !**



INSTAGRAM BAM:  
MELANIE SCHÖTTLE

WE LIKE



WE LIKE



*Our cover picture!*



special thanks to  
**@stradcopy**  
Ken Edwards





*Send us your pictures!*  
#bamcases

---

# REJOIGNEZ-NOUS ! JOIN US!

---

NOUS SERONS RAVIS DE VOUS RETROUVER EN 2023 !

HERE ARE THE PLACES WHERE YOU CAN MEET US IN 2023!  
JOIN US!

---



# LEGAL NOTICE MENTIONS LÉGALES

**LAYOUT / DESIGN:**

Simone Eiteljörge  
[www.simoneeiteljoerge.com](http://www.simoneeiteljoerge.com)

**PRINTER/IMPRIMEUR:**

Printing House TOLEK  
[www.tolek.com.pl](http://www.tolek.com.pl)

**PRODUCT PHOTOS /  
PHOTOS PRODUITS:**

Les Studios Schuller Graphic  
[www.schuller-graphic.com](http://www.schuller-graphic.com)  
Studio 911  
[www.photo911.fr](http://www.photo911.fr)

**PHOTOS & CAMERA /  
CREATION PHOTO & VIDEO:**

Sven Kolb  
[www.svenkolb.com](http://www.svenkolb.com)

**CONTENT & IDEA /  
CONTENU & IDÉES:**

Katja and Robert Goetz

**BAM EUROPE** (Headquarters & Production)

BAM SAS  
Rue de la Vignerie  
14160 Dives-sur-Mer  
France  
Tel : +33 (0) 231 24 64 64  
Email : [bam.cases@bamcases.com](mailto:bam.cases@bamcases.com)

**bam**  
l'original

[www.bamcases.com](http://www.bamcases.com)



LIMITED EDITION

# Nashville

IKAT



「bam」  
l'original

Designed by BAM in Normandie, France

[www.bamcases.com](http://www.bamcases.com)