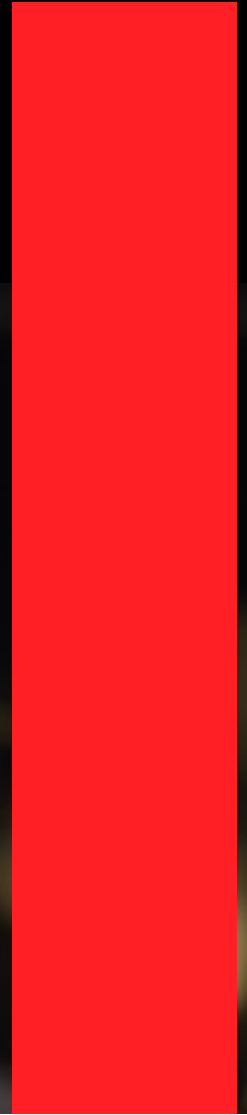


THE ART OF CHOOSING A LIGATURE



WHEN
DETAILS
MAKE THE
DIFFERENCE



THE ART OF CHOOSING A LIGATURE

Choosing a ligature for saxophone involves considering factors like material, design and personal preference. Different ligatures paired with the many different mouthpiece brands can affect the tone and response.

Before trying a new ligature ask yourself these things:

- Do I prefer a dark tone, balanced tone with an edge or very bright tone?
- Do I like more free blowing or resistance?
- Do I want a metal ligature or fabric ligature?
- What is my current setup giving me? Do I use a Hard / Soft Reed? What is my Mouthpiece Tip opening?

All of these factors all will influence the sound that your ligature can offer. In the next pages, we will see how the different sound combinations can complement your setup.

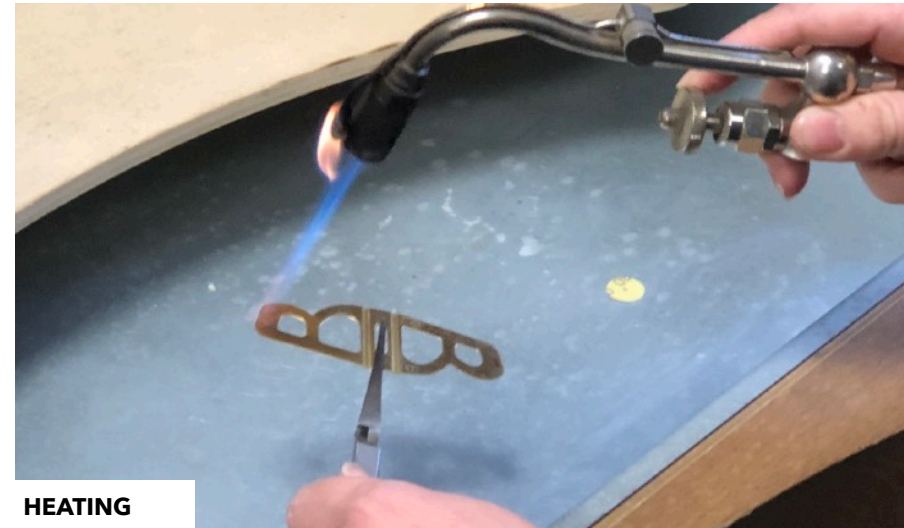
From there, the next step becomes fun: trying new gear.



DARK TONE WITH RESISTANCE (METAL LIGATURE)

BG France's **24K Gold-Plated** or **Black Ligatures** would be best for this

- Dark, warm and resonant sound.
- Helps the musician have a focused, full sound, while remaining centred throughout the registers of the instrument.
- Resistance requires more effort to produce sound.
- Evenness across all registers.
- Helps the longevity for reeds. None of the BG France ligatures apply a lot of pressure to the reed, ultimately helping the heart of the reed long term.



HEATING

DUO

24k Gold Plated

- LD1 - Alto Sax
- LDT1 - Tenor Sax
- LDS1 - Soprano Sax

Black Lacquered

- LDB - Alto Sax
- LDTB - Tenor Sax
- LDSB - Soprano Sax

UNIVERSAL JAZZ

24k Gold Plated

- L21 MJ - Alto & Tenor Sax

Black Lacquered

- L23 BMJ - Alto & Tenor Sax

TRADITION

24k Gold Plated

- L11 - Alto Sax
- L41 - Tenor Sax
- L51 - Soprano Sax
- L61 - Baritone Sax

DARK TONE AND FREE BLOWING (METAL LIGATURE)

BG France's **Gold-Lacquered Ligatures** would be best for this:

- Dark, warm and resonant sound.
- Helps the musician have a focused, full sound, while remaining centred throughout the registers of the instrument.
- Free blowing allows the musician to not work as hard to produce a sound.
- Helps fill out the lower register of the instrument.
- Evenness across all registers.
- Helps the longevity for reeds. None of the BG France ligatures apply a lot of pressure to the reed, ultimately helping the heart of the reed long term.



TRADITION

Gold Lacquered

- L10 - Alto Sax
- L40 - Tenor Sax
- L50 - Soprano Sax
- L60 - Baritone Sax

UNIVERSAL JAZZ

Gold Lacquered

- L20 MJ - Alto & Tenor Sax

DUO

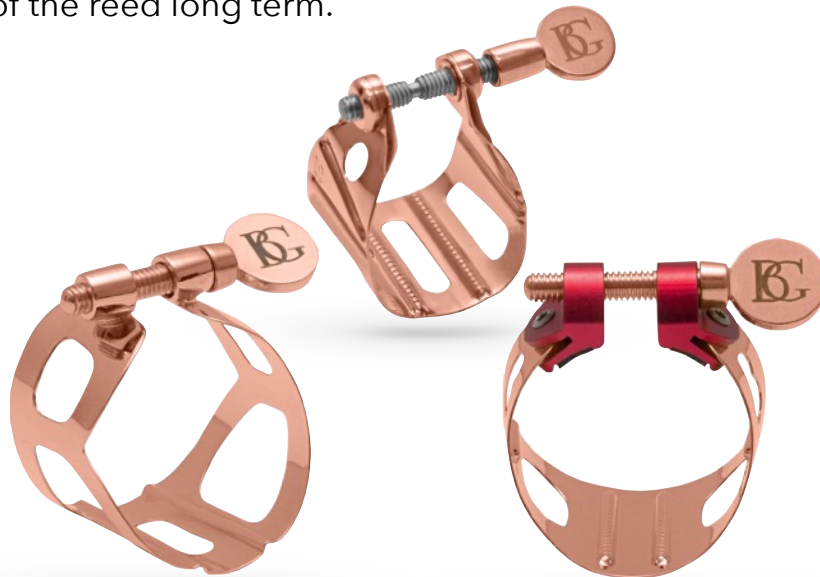
Gold Lacquered

- LD0 - Alto Sax
- LDT0 - Tenor Sax
- LDS0 - Soprano Sax

BALANCED TONE AND FREE BLOWING (METAL LIGATURE)

BG France's **Rose Gold Ligatures** would be best for this:

- Crisp/Balanced Tone throughout the whole instrument.
- Free blowing allows the musician to not work as hard to produce a sound.
- Evenness across all registers.
- When playing "lead alto" or a lead chair, the Rose-Gold ligatures allow the musician to "sit" on top of the section with that extra "sizzle".
- Helps the longevity for reeds. None of the BG France ligatures apply a lot of pressure to the reed, ultimately helping the heart of the reed long term.



SHAPING

TRADITION

Rose Gold

- L19 - Alto Sax
- L49 - Tenor Sax
- L59 - Soprano Sax
- L69 - Baritone Sax

UNIVERSAL JAZZ

Rose Gold

- L29 MJ - Alto & Tenor Sax

DUO

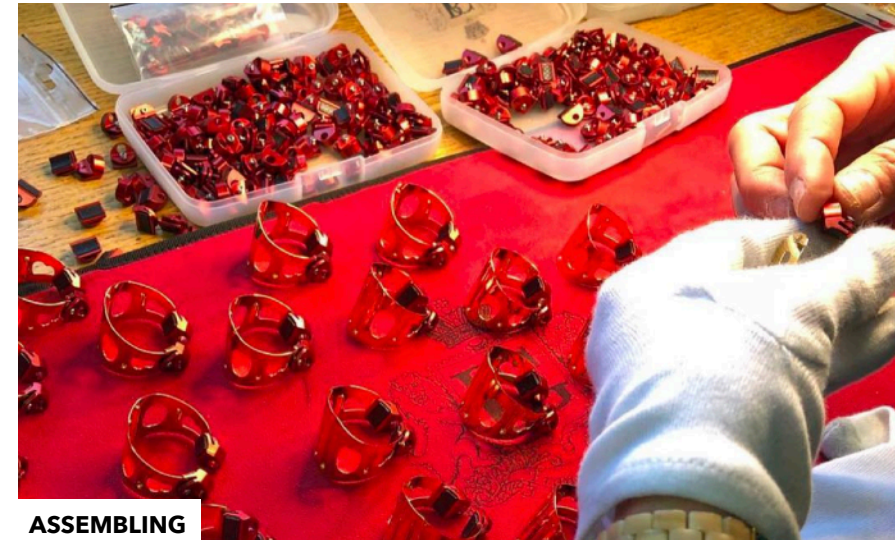
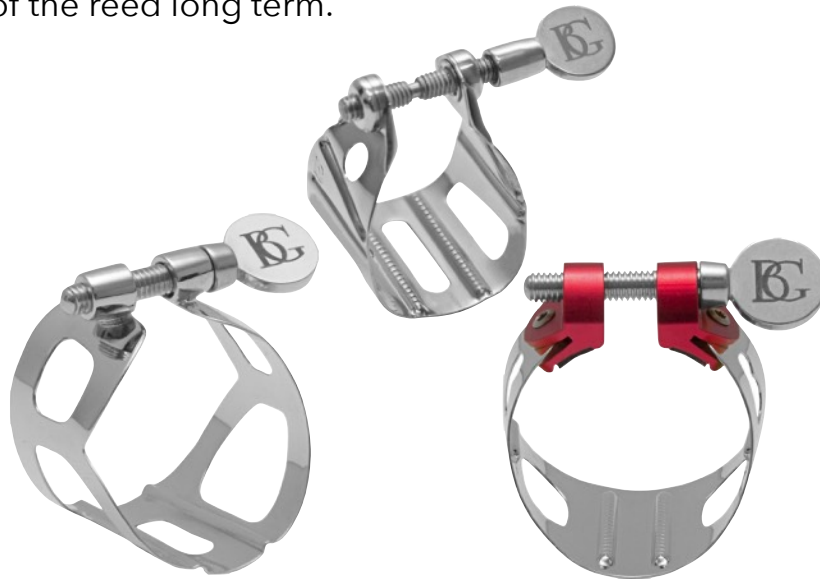
Rose Gold

- LD9 - Alto Sax
- LDT9 - Tenor Sax
- LDS9 - Soprano Sax

BRIGHT TONE AND FREE BLOWING (METAL LIGATURE)

BG France's **Silver Ligatures** would be best for this:

- Crisp/Balanced Tone throughout the whole instrument.
- Free blowing allows the musician to not work as hard to produce a sound.
- Evenness across all registers.
- When playing "lead alto" or a lead chair, the Silver ligatures allow the musician to "cut" through the section with that extra "bite" needed. Excellent for commercial musicians.
- Helps the longevity for reeds. None of the BG France ligatures apply a lot of pressure to the reed, ultimately helping the heart of the reed long term.



ASSEMBLING

TRADITION

Silver

- L17 - Alto Sax
- L47 - Tenor Sax
- L57 - Soprano Sax
- L67 - Baritone Sax

UNIVERSAL JAZZ

Silver

- L27 MJ - Alto & Tenor Sax

DUO

Silver

- LD - Alto Sax
- LDT - Tenor Sax
- LDS - Soprano Sax

DARK TONE WITH RESISTANCE (FABRIC LIGATURE)

BG France's **Standard Ligatures** would be best for this:

- Dark/Warm tone while creating a natural resistance with the rubber plate in the ligature.
- Helps the musician to have a focused, full sound, while remaining centered throughout the registers of the instrument.
- Resistance requires more effort to produce sound.
- Helps the longevity for reeds. None of the BG France ligatures apply a lot of pressure to the reed, ultimately helping the heart of the reed long term.



FINISHING



STANDARD

With Rubber plate

- L12 - Alto Sax
- L13 - Tenor Sax
- L14 - Soprano Sax
- L15 - Baritone Sax
- L16 - Sopranino Sax

STANDARD JAZZ

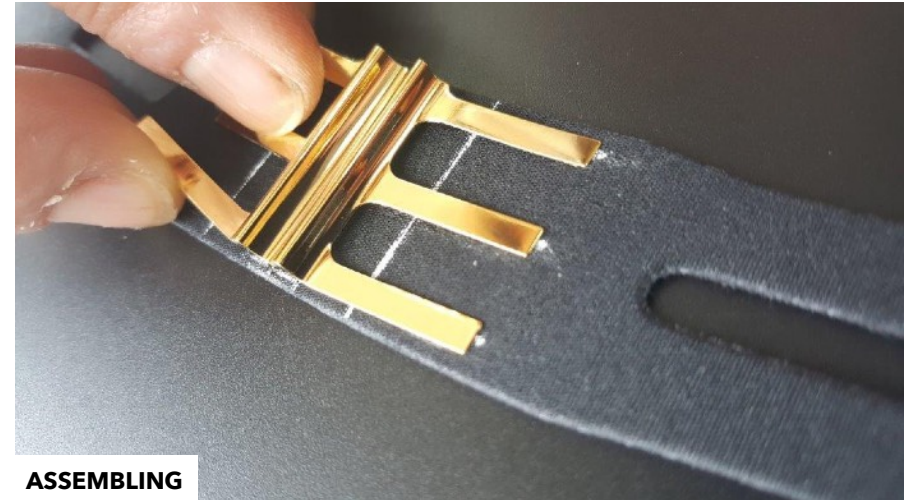
With Rubber plate

- L21SJ - Tenor Sax metal mp
- L24SJ - Tenor Sax metal mp

BALANCED TONE WITH SOME RESISTANCE (FABRIC LIGATURE)

BG France's **Super Revelation Ligatures** would be best for this:

- Crisp/Balanced Tone throughout the whole instrument
- Evenness across all registers.
- The 24K Gold Plate allows the sound to have that happy medium between a metal ligature and a fabric ligature. If the musician is unsure about wanting to go one way or the other, this ligature gives the qualities of both a gold-plated metal ligature and a fabric ligature.
- Helps the longevity for reeds. None of the BG France ligatures apply a lot of pressure to the reed, ultimately helping the heart of the reed long term.



SUPER REVELATION

With 24K Gold plated plate

- L12SR - Alto Sax
- L13SR - Tenor Sax
- L14SR - Soprano Sax
- L15SR - Baritone Sax

BRIGHTER TONE AND FREE BLOWING (FABRIC LIGATURE)

BG France's **Flex Ligatures** would be best for this:

- This is BG France's "lightest" ligature. It has the least amount of fabric, offering a lightness to the musician's sound.
- Evenness across all registers.
- Free blowing allows the musician to not work as hard to produce a sound.
- When using the Flex ligature with metal mouthpieces it allows the musician to "sit" on top of the section with that extra "sizzle" while not being as bright as a silver ligature.
- Helps the longevity for reeds. None of the BG France ligatures apply a lot of pressure to the reed, ultimately helping the heart of the reed long term.



FLEX

- LFA - Alto Sax
- LFT - Tenor Sax
- LFS - Soprano Sax
- LFSB - Baritone Sax



FLEX JAZZ

For metal mouthpieces:

- LFJ4 - Alto Sax (Beechler, Theo Wanne...)
- LFJ6 - Tenor Sax (Larsen, Dukoff, Rousseau...)
- LFJ7 - Tenor Sax (Selmer, Jody Jazz ...)
- LFJ9 - Tenor Sax (Theo Wanne, Otto Link ...)
- LFJ0 - Soprano Sax (Otto Link)

BG FRANCE OFFERS THREE STYLES OF METAL LIGATURES WITH DISTINCT SOUND AND STYLE DIFFERENCES

WHEN
DETAILS
MAKE THE
DIFFERENCE



TRADITION:

- **2 unique points of contact** for the reed.
- Rails that do not apply a lot of pressure to the reed.
- Lightest weight metal ligature.
- Most free blowing for the soloist.



DUO

- **4 points of contact** for the reed and mouthpiece.
- Rails that do not apply a lot of pressure to the reed.
- Free vibration of the mouthpiece.
- Focused sound allowing the reed to vibrate freely.
- Most flexibility to fit mouthpieces due to the rubber pieces. not scratching the mouthpiece.
- Pairs well with both metal and hard rubber mouthpieces.



UNIVERSAL

- **6 unique points of contact** for the reed & mouthpiece.
- Fits 90% of metal mouthpieces of alto & tenor sax.
- Rails that do not apply a lot of pressure to the reed.
- Denser than the Tradition ligature.
- More resistant than the Tradition ligature.
- Ideal for metal mouthpieces.



TRADITION		SILVER PLATED	GOLD LACQUERED	ROSE GOLD	24K GOLD PLATED
ALTO	SAX	L17	L10	L19	L11
TENOR	SAX	L47	L40	L49	L41
SOPRANO	SAX	L57	L50	L59	L51
BARITONE	SAX	L67	L60	L69	L61



DUO		SILVER PLATED	GOLD LACQUERED	ROSE GOLD	24K GOLD PLATED	BLACK LACQUERED
ALTO	SAX	LD	LD0	LD9	LD1	LDB
TENOR	SAX	LDT	LDT0	LDT9	LDT1	LDTB
SOPRANO	SAX	LDS	LDS0	LDS9	LDS1	LDSB



UNIVERSAL		SILVER PLATED	GOLD LACQUERED	ROSE GOLD	24K GOLD PLATED	BLACK LACQUERED
ALTO & TENOR	SAX	L27 MJ	L20 MJ	L29 MJ	L21 MJ	L23 BMJ



LIGATURES SIZING CHART

FLEX JAZZ

FLEX JAZZ			METAL MOUTHPIECES
SOPRANO	SAX	LFJ0	OTTO LINK
ALTO	SAX	LFJ4	BEECHLER BELLITE, BRANCHER, THEO WANNE (FIRE / ABAIR)
TENOR	SAX	LFJ6	LARSEN, ROUSSEAU, YANAGISAWA, DUKOFF ...
TENOR	SAX	LFJ7	SELMER, JODY JAZZ ...
TENOR	SAX	LFJ9	OTTO LINK, THEO WANNE



STANDARD JAZZ

STANDARD JAZZ			METAL MOUTHPIECES
TENOR	SAX	L21 SJ	BERG LARSEN, DUKOFF
TENOR	SAX	L24 SJ	OTTO LINK



REVELATION JAZZ

REVELATION JAZZ			METAL MOUTHPIECES
TENOR	SAX	L21 RJ	BERG LARSEN, DUKOFF
TENOR	SAX	L24 RJ	OTTO LINK



REVELATION SILVER JAZZ

REVELATION SILVER JAZZ			HARD RUBBER MOUTHPIECES
ALTO	SAX	L12RSJ	MEYER HARD RUBBER



FABRIC



LIGATURES SIZING CHART



WHEN DETAILS MAKE THE DIFFERENCE



BG FRANCE - FR (Français)
BG FRANCE - EN (English)
BG FRANCE - IT (Italiano)
BG LATINOAMERICA (Español)



BGFRANCE_OFFICIAL



BG FRANCKBICHON