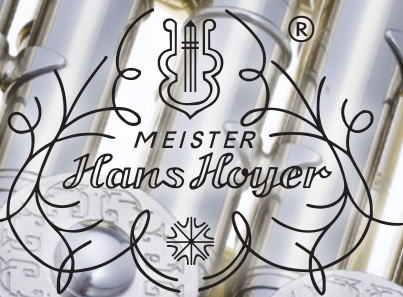


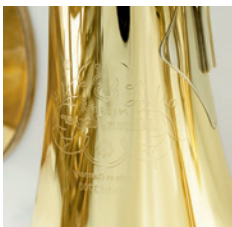


KULTUR

FRENCH HORNS - WAGNER TUBAS







04 HANS HOYER

04 - From tradition to innovation

05 - All good things come in threes

06 STUDENT HORNS

06 - 3700 & 3702

08 - SINGLE HORNS

08 - 700 & 702

09 - 704 & 706

10 - DOUBLE HORNS

11 - Geyer Style 801 & G10

12 - K10

14 - 6801 & 7801

15 - C12

16 - TRIPLE HORNS

16 - C23

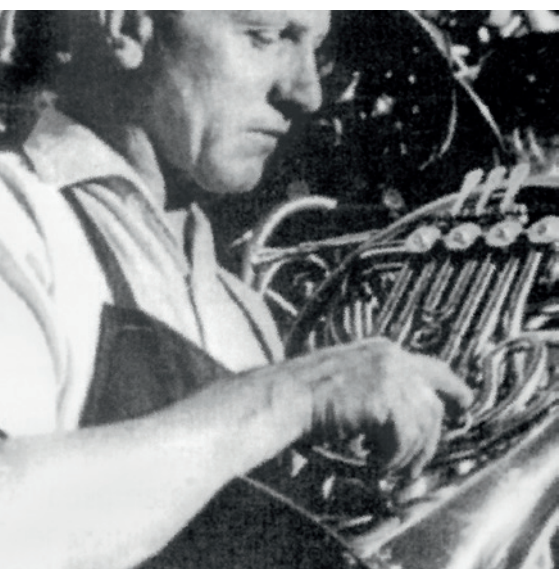
17 - C1

18 - DESCANT HORN

18 - RT91

19 WAGNER TUBAS

19 - 822, 824 & 4826 G



FROM TRADITION TO INNOVATION

Markneukirchen and the surrounding area has a long tradition of musical instrument manufacturing, dating back to 1755 when Isaak Eschenbach, a native of Markneukirchen and maker of French horns who had learned his trade near Leipzig, established a business there. Markneukirchen and its renowned industry continue to grow to this day.

The international reputation of the instruments has been earned because of all the technical innovation and development that is part of the area's tradition and philosophy, because of the comprehensive range of models

offered and because of the fact that individual expectations of the musicians who own and use these instruments have invariably been met or exceeded.

Meister Hans Hoyer horns are built not only to uncompromising musical and technical standards, but they are manufactured in an environmentally clean plant, utilizing entirely new state of the art processes engineered especially for brasswind instruments.

ALL GOOD THINGS COME IN THREES

Contrary to the existing linkages, the new 3B linkage system uses two steel balls in bronze ball bearings for each valve in order to optimise the transmission: one ball connects the valve action rod to the bottom of the lever, the other one is connected to the stop arm.

For this system, 3B stands for “Bronze Ball Bearing”, or in other words for a steel ball that is held within a bronze bearing. Additionally to this perfect gliding combination of steel and bronze, a spring on the connector to the valve action rod keeps the linkage in an optimal position to guarantee a perfectly smooth moving. In the end, it feels not much different to a string mechanism rotary valve.



3B™ LINKAGE SYSTEM



FOR THE PROFESSIONALS OF TOMORROW!

The Meister Hans Hoyer Student models are made with a smaller wrap and slightly smaller hand made bell, designed to accommodate the young student, yet deliver the sound of a full-fledged orchestral instrument. The ease of both response and maneuverability allow the smaller students to achieve success more rapidly, and therefore experience greater enjoyment playing the horn.

The adjustable finger hook and the adjustable hand rest are standard and allow best ergonomics for every sized hand.

H O R N S

3700 / 3702



3700

TECHNICAL CHARACTERISTICS

- F horn for young musicians
- corpus diameter: 310 mm/12.205"
- bell diameter: 290 mm/11.417"
- bore: 11,9 mm/0.468"
- three-dimensional adjustable finger hook
- adjustable hand rest (flipper)
- gold brass leadpipe
- clear lacquered
- 3B™ linkage system



3702

TECHNICAL CHARACTERISTICS

- Bb horn for young musicians
- corpus diameter: 310 mm/12.205"
- bell diameter: 290 mm/11.417"
- bore: 11,9 mm/0.468"
- three-dimensional adjustable finger hook
- adjustable hand rest (flipper)
- gold brass leadpipe
- clear lacquered
- 3B™ linkage system

SINGLE DOESN'T MEAN SIMPLE.

The single wrapped Meister Hans Hoyer horns are equipped with the patented 3B linkage system, which enables extremely smooth valve operation.

The leadpipe is made of high quality gold brass, resistant to premature corrosion. The three-dimensional adjustable finger hook enables proper ergonomics for the individual player. The optional F slide (for 704) allows the player to expand his Bb horns as a modified yet fully satisfying double horn in order to accommodate intonation, and to expand the tonal range.

700 / 702



700 TECHNICAL CHARACTERISTICS

- Single F horn
- bore: 11,9 mm/0.468"
- bell diameter: 310 mm/12.204"
- gold brass leadpipe
- 3B™ linkage system
- three-dimensional adjustable fingerhook
- clear lacquered



702 TECHNICAL CHARACTERISTICS

- Single Bb horn
- bore: 11,9 mm/0.468"
- bell diameter: 310 mm/12.204"
- gold brass leadpipe
- 3B™ linkage system
- three-dimensional adjustable fingerhook
- clear lacquered

H O R N S

704 / 706



704

TECHNICAL CHARACTERISTICS

- Single Bb horn with A-stop valve
- bore: 11,9 mm/0.468"
- bell diameter: 310 mm/12.204"
- gold brass leadpipe
- 3B™ linkage system
- three-dimensional adjustable fingerhook
- clear lacquered

706 (not pictured)

TECHNICAL CHARACTERISTICS

- Single Bb horn with A-stop valve and F-valve
- bore: 11,9 mm/0.468"
- bell diameter: 310 mm/12.204"
- gold brass leadpipe
- 3B™ linkage system
- three-dimensional adjustable fingerhook
- clear lacquered

Options 702/704/706:

- gold brass
- detachable bell
- F-extension slide (only 704)
- Eb-slide for F horn
- adjustable hand rest (flipper)



DOUBLE GEYER STYLE

BECAUSE MUSIC IS INSIDE OF YOU!

Four in-line valves allow for optimum air flow and thus allow the player flexible and unimpeded fluidity throughout the entire range. The most popular model 801 has been built for decades and will continue to be the mainstay of this style Hoyer horn. Through high-quality design, the model is suitable for beginners yet ideal for the aspiring professional. Standard features include gold brass leadpipe, adjustable finger hook and thumb lever. Models are available with either string or 3B linkage system, and offered in either yellow or gold brass.

The Hans Hoyer model G10 is styled after the original instruments by Carl Geyer, who emigrated to the United States in 1903. The well balanced design is very similar to the originals of the 1950's with rich tone colors and similar resistance. Careful attention was given to the positioning of the braces as well as on the ergonomic arrangement of the valve and thumb levers.

H O R N S

801 / G10



801

TECHNICAL CHARACTERISTICS

- F/Bb double horn
- bore: 11,9 mm/0.468"
- bell: 310 mm/12.204" (M)
- gold brass leadpipe
- adjustable thumb lever
- three-dimensional adjustable finger hook
- 3B™ linkage system
- clear lacquered

Options:

- gold brass
- detachable bell
- string mechanism (model 802)
- adjustable hand rest (flipper)



G10

TECHNICAL CHARACTERISTICS

- F/Bb double horn
- bore: 11,9 mm/0.468"
- bell: 310 mm/12.204" (M)
- gold brass leadpipe
- detachable bell
- adjustable thumb lever
- three-dimensional adjustable finger hook
- 3B™ linkage system
- clear lacquered

Options:

- string mechanism
- adjustable hand rest (flipper)



THE NEW K10 F/Bb-DOUBLE HORN is the newest innovation for the orchestra.

Designed in close cooperation with Markus Wittgens. A well-orchestrated middle range, a great low register and an unknown ease in the higher area is obtained with a light rotary valve set, a full flow switch valve and an individually adjustable mouthpiece receiver. A pleasant well-balanced set-up, supported by both a fully adjustable fingerhook and thumb lever plus flipper guarantees perfect ergonomics. Every K10 has a detachable bell and is delivered in an original MB case.

K10



MARKUS WITTGENS
Principal horn with the Gürzenich Orchestra Cologne





HORNS

For best response and articulation, each K10 is supplied with a selection of 6 different mouthpiece receivers to achieve a perfect fit with the most common mouthpiece shanks.



yellow brass



gold brass

K10

TECHNICAL CHARACTERISTICS

- Key: F/Bb
- 4 rotary valves
- 11,9mm / 0.468" bore
- 3B™ linkage system
- 310mm / 12.204" bell
- detachable (ML) bell
- full flow switch valve
- individually adjustable mouthpiece receiver
- three-dimensional adjustable fingerhook, thumblever and flipper
- yellow brass
- clear lacquered

Options:

- gold brass
- unlacquered



OUR SOUND CAN RE-WRITE HISTORY!

The design of the “Kruspe style” dates back to 1897. The horns were well known for their dark and warm sound. Myron Bloom (Former solo horn of the Cleveland Orchestra, and Professor at Indiana University, Bloomington) and Vincent De Rosa (First call L.A. Studio Artist), assisted in the development of the 6000 and 7000 series, meeting the need to replace their own best models of the 1940’s while also meeting today’s standards. The 6000 models have the standard Hoyer quality parts, such as corrosion-resistant leadpipe and high-quality lacquered XL bell and are available in yellow and gold brass or nickel silver.

The custom 7000 series is designed with pre-aged material in order to give the player the feeling to an already well “broken in” instrument. The 7000 model comes without lacquer.

DOUBLE 6801 / 7801



6801

TECHNICAL CHARACTERISTICS

- F/Bb double horn
- bore: 11,9 mm/0.468"
- bell: 310 mm/12.204" (XL)
- gold brass leadpipe
- adjustable thumb lever
- 3B™ linkage system
- clear lacquered

Options:

- gold brass
- nickel silver
- detachable bell
- string mechanism (model 6802)
- three-dimensional adjustable finger hook
- adjustable hand rest (flipper)

7801

TECHNICAL CHARACTERISTICS

- F/Bb double horn
- bore: 11,9 mm/0.468"
- bell: 310 mm/12.204" (XL)
- gold brass leadpipe
- unlacquered
- pre-aged material
- adjustable thumb lever
- 3B™ linkage system

Options:

- nickel silver
- detachable bell
- string mechanism (model 7802)
- three-dimensional adjustable finger hook
- adjustable hand rest (flipper)

BLOW YOUR MIND.

The C12 is a modern variant of a double horn. The horn has similar attributes as our C23 triple horn, such as a short leadpipe and the double-switching system. This combination gives the players extreme security while allowing for very soft, liquid slurs. The horn is delivered with a standard corrosion-resistant gold brass leadpipe and is available in either yellow or gold brass.

H O R N S

C12



C12

TECHNICAL CHARACTERISTICS

- F/Bb double horn
- bore: 11,9 mm/0.468"
- bell: 310 mm/12.204" (ML)
- gold brass leadpipe
- string mechanism
- detachable bell
- two switch valves
- three-dimensional adjustable finger hook
- clear lacquered

Options:

- gold brass
- adjustable hand rest (flipper)



FROM THE BEST, FOR THE BEST!

The fruitful collaboration with Professor André Cazalet, soloist of the Orchestre de Paris and professor at the prestigious Conservatoire National Supérieur de Paris, has helped to produce three successful triple horn models: the compensating model C1 (F/Bb/high Eb), the C2 (F/Bb/high F) and the most successful, full triple (F/Bb/high F) horn C23. The full sound of the C23 doesn't stick out in the symphonic orchestra setting, and it is very accurate and easy to play.

T R I P L E

C23 / C1



C23

TECHNICAL CHARACTERISTICS

- F/Bb/high F triple horn
- bore: 11,9 mm/0.468"
- bell: 310 mm/12.204" (ML)
- gold brass leadpipe
- string mechanism
- Fully independent valve slides
- detachable bell
- clear lacquered

Options:

- gold brass
- adjustable hand rest (flipper)
- three-dimensional adjustable finger hook



C1

TECHNICAL CHARACTERISTICS

- F/Bb/high Eb triple horn (compensated)
- bore: 11,9 mm/0.468"
- bell: 310 mm/12.204" (ML)
- leadpipe
- string mechanism
- detachable bell
- clear lacquered

Options:

- gold brass
- adjustable hand rest (flipper)
- three-dimensional adjustable finger hook

H O R N S



ANDRÉ CAZALET
Solo-Horn for the
Orchestre de Paris



DESIGN FOR THE DISCERNING.

The inspiration for this instrument came from Richard Todd, principal horn of the Los Angeles Chamber Orchestra and Professor at the University of Miami. Richard Todd paid special attention to the L.A. specific horn sound, originally established by his teacher, Vincent De Rosa.

The horn is quite versatile and serves Richard Todd well in both his classical, studio, and jazz performances. The horn is made of very thin brass, which ensures quick response and accuracy. The bell is a single-seamed bell in German size. The horn is available in yellow or gold brass, with either string or 3B linkage.

DESCANT HORN

RT91



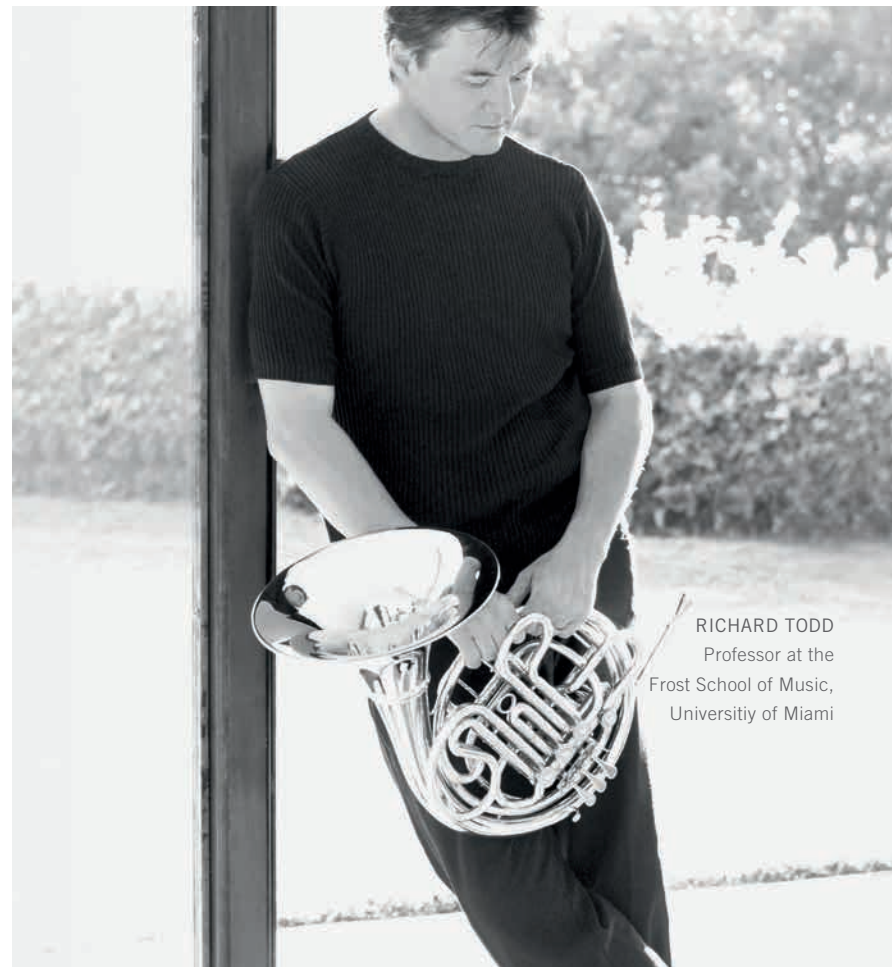
RT91

TECHNICAL CHARACTERISTICS

- Bb/ High F descant horn
- bore: 11,9 mm/0.468"
- bell: 310 mm/12.204"
- gold brass leadpipe
- 3B™ linkage system
- fully independent valve slides
- second thumb lever for A / stopping valve.
- three-dimensional adjustable finger hook
- clear lacquered

Options:

- string mechanism
- detachable bell
- gold brass
- adjustable hand rest (flipper)



RICHARD TODD
Professor at the
Frost School of Music,
University of Miami

PLAY IN ANOTHER LEAGUE.

Developed in collaboration with Professor Carlos Crespo, the Meister Hans Hoyer Wagner tubas have been the choice of the Bayreuth Festival Orchestra since 1996. Noted for being free blowing instruments with excellent intonation, the Hoyer tubas are winning acclaim among orchestras throughout the world. The model 4826 double tuba is gaining popularity as it is a fully developed double horn which allows the player to quickly adapt during the change from horn to tuba without relearning fingerings.

WAGNER TUBAS

822 / 824 / 4826G



822 TECHNICAL CHARACTERISTICS

- Bb-Wagnertuba
- brass body
- bore: 12,5 mm/0.492"
- bell: 250 mm/9.84"
- gold brass leadpipe
- 3B™ linkage system
- 4 valves
- clear lacquered



824 TECHNICAL CHARACTERISTICS

- F-Wagnertuba
- brass body
- bore: 11,9 mm/0.468"
- bell: 245 mm/9.646"
- gold brass leadpipe
- 3B™ linkage system
- 4 valves
- clear lacquered



4826G TECHNICAL CHARACTERISTICS

- Bb/F double Wagnertuba
- gold brass body
- bore: 11,9 mm/0.468"
- bell: 250 mm/9.84"
- gold brass leadpipe
- 3B™ linkage system
- 5 valves
- clear lacquered

hans-hoyer.com



FRENCH HORNS - WAGNER TUBAS

BUFFET CRAMPON

5, rue Maurice Berteaux – 78711 Mantes-la-ville - FRANCE
T: +33 (0)1 30 98 51 30 – F: +33 (0)1 34 78 79 02 - contact@buffetcrampon.com