

*Ludwig*

*Ludwig*  
USA



NEW FOR  
2015

WINTER NAMM EDITION

# LEGACY MAHOGANY SERIES

The return of the sound that built Ludwig. As Ludwig's flagship professional drum line, the Legacy Mahogany Series is a decidedly modern twist on our vintage shell formula featuring a 3-ply Mahogany / Poplar / Mahogany layup with solid maple support rings. Available in five configurations and six exclusive Wrap-Tite and satin finishes.



## MAHOGANY SATIN *24" 3pc Shell Pack*

LLC5403LXMH  
9x13" Tom, 16x16" Floor Tom, 14x24" Bass  
Drum. Shown with matching 16x18" Floor Tom,  
6.5x14" Snare and Atlas Classic Hardware.  
Shown in Mahogany Satin (MH)





## JUMBO BLACK PEARL

### 22" 5pc Shell Pack

LLC5205LXJB  
 7x10", 8x12" Toms, 14x14", 16x16" Floor  
 Toms, 14x22" Bass Drum. Shown with  
 matching 6.5x14" Snare and Atlas Classic  
 Hardware. Shown in Jumbo Black Pearl (JB)

## VINTAGE NICKEL SPARKLE

### 22" 3pc Shell Pack

LLC5203LXNS  
 9x13" Tom, 16x16" Floor Tom, 14x22" Bass Drum.  
 Shown with 6.5x14" Supraphonic Snare and Atlas  
 Pro Hardware. Shown in Vintage Nickel Sparkle (NS)



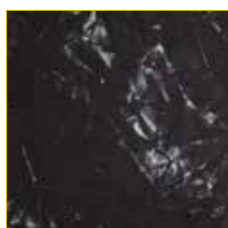
## BURGUNDY SPARKLE

### 20" 3pc Shell Pack

LLC5003LXBS  
 8x12" Tom, 14x14" Floor Tom, 14x20" Bass Drum.  
 Shown with matching 5x14" snare and Atlas Classic  
 Hardware. Shown in Vintage Burgundy Sparkle (BS)



Jumbo White Pearl - JW



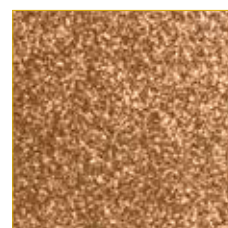
Jumbo Black Pearl - JB



Aged Onyx Marine - AO



Vintage Burgundy Sparkle - BS



Vintage Nickel Sparkle - NS



Mahogany Satin - MH

# CLASSIC MAPLE QUICK PICK

A simple and fast way to order Ludwig Classic Maple drums for 2015. Available in 20 of our most popular Wrap-Tite finishes in 20 different drum sizes.



## VINTAGE BLACK PEARL *5pc Quick Pick*

8x10", 9x12" Toms, 16x16" Floor Tom, 18x22" Bass Drum, 6.5x14" snare. Shown with Atlas Pro Hardware. Shown in Vintage Black Oyster (1Q)

### SIZE CHART

| Bass Drums | Tom Toms | Floor Toms | Snare Drums |
|------------|----------|------------|-------------|
| 14"x18"    | 7"x8"    | 14"x14"    | 5"x14"      |
| 14"x20"    | 7"x10"   | 16"x16"    | 6.5"x14"    |
| 14"x22"    | 8"x10"   | 16"x18"    |             |
| 16"x22"    | 8"x12"   |            |             |
| 18"x22"    | 9"x12"   |            |             |
| 14"x24"    | 9"x13"   |            |             |
| 16"x24"    | 10"x14"  |            |             |
| 14"x26"    |          |            |             |



# Available Quick Pick Colors



Black Sparkle – 0R



Blue Sparkle – 32



Gold Sparkle – 33



Green Sparkle – 54



Black Galaxy – BG



Red Sparkle – 27



Silver Sparkle – 0S



White Marine Pearl – 0P



Sky Blue Pearl – 52



White Cortex – 0F



Black Cortex – 0G



Granite Glitter – GM



Apple Glass – AG



Vintage White Marine – NM



Galaxy Bronze – GB



Turquoiser – TQ



Red Oyster Pearl – RP



Shampayne – SP



Blue / Olive Oyster – 2P



Vintage Black Oyster – 1Q

# CLASSIC MAPLE SATIN FINISHES

A new finish option for Classic Maple featuring subtle but stunning satin lacquer finishes for 2015. Available in four satin finishes on all Classic Maple Drums.



## NATURAL MAPLE SATIN

*7pc Set-up*

7x8", 8x10", 9x12" Toms, 14x14", 16x16" Floor Toms, 18x22" Bass Drum. Shown with 6.5x14" Supraphonic snare and Atlas Pro Hardware. Shown in Natural Maple Satin (SN)



Cherry Satin – SL



Charcoal Satin – SY



Natural Maple Satin – SN



Mahogany Satin – SM



# LIMITED PRODUCTION MODELS



## STAINLESS STEEL

The Stainless ProBeat kit is a true testament to our timeless roots. 1.5mm hand-rolled steel shells produce enormous tone and volume without harsh overtones.

L8343LXSS  
9x13" Tom, 16x16" Floor Tom,  
14x24" Bass Drum (Polished Shells)

L8343LXSB  
9x13" Tom, 16x16" Floor Tom,  
14x24" Bass Drum (Brushed Shells)



## CLASSIC MAPLE SALESMAN SAMPLE

Created in the 50's and 60's for traveling road reps and re-imagined by Black Keys' drummer Patrick Carney, the Salesman kit reflects the classic styling of the original with modern sonic thunder.

L8303LXPC  
8x12" Tom, 14x14" Floor Tom,  
14x20" Bass Drum (Small Classic Lugs)

LS401XXPCS  
Matching 5x14" Classic Maple Snare

# COPPER PHONIC

With close to 100 years' experience building copper timpani, the newest member to the Ludwig USA snare drum range is the Copper Phonic snare drum. Featuring a dark raw copper finish, 1.2mm thick shell, Imperial lugs, and 2.3mm hoops. Built to the same professional standards as our Black Beauty, Supraphonic, and Bronze Phonic models, the new Copper Phonic is a proud addition to the Ludwig USA family and a legend in the making. Available in 5x14" (LC661), and 6.5 x14"(LC663) sizes.



# CONCERT TOMS

Old school cool returns! Break out your bell bottom jeans and your mirror sunglasses! Loved in the 70's going all the way back to the Ludwig Octopus set, single headed concert toms are once again available in the Classic Maple range in all Wrap-Tite finishes from 6" to 18". Available through the Ludwig Classic Maple Configurator.



## OCTOPLUS+1

Custom Configured Classic Maple set in Pure White Glass finish  
6x6", 6.5x8", 7x10", 8x12", 9x13", 10x14", 12x15", 14x16", 16x18" Concert Toms,  
16x18" Floor Tom, (2) 14x24" Bass Drums, 6.5x14" Snare Drum

