



Muse

Bb & A clarinets

*Conception and
Inspiration*

Pursuing the successful dynamic of the new generation of clarinets (Privilège, Présence and Prologue), **the Bb and A Muse clarinets** have been designed for clarinetists seeking instruments offering a **very precise and direct response**.

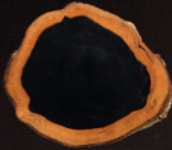
The Muse clarinets evoke the artists' **source of inspiration** to lead them to creative freedom, beauty, universal harmony.

The **ergonomic comfort** is similar to the one on our Privilège and Présence models, tested by numerous clarinetists worldwide.

An **adjustable thumb key** for low F and E correction on the A clarinet is available on the set of Muse clarinets.

The upper joint of the Bb and A Muse clarinets is fitted with **the 10-year warranty EVOLUTION★ system**.

- Key: Bb & A
- Universal pitch: 440-442 Hz
- Standard Nr 1 Boehm system standard (18 keys and 19 keys, 6 rings)
- Wood: granadilla
- 100% natural wax
- New bore (cylindrical part: 14.6 mm)
- Silver- and matte black chrome-plated (7mm)
- Barrels: 64 and 65 mm
- Gore-Tex, leather and cork pads
- Silver-plated ergonomic keywork with adjustable thumb rest
- Embedded EVOLUTION★ system (10-year warranty on upper joint)
- Exclusive Muse engraving
- Echo mouthpiece
- PRiSMe case



- Specially selected granadilla wood, stabilized for three years in a controlled environment, at constant temperature and hygrometry
- 100 % natural wax



Adjustable thumb rest



Correction system for low F and E notes with adjusting screw



Correction tone hole for low E on the lower joint!



G#/C# precision optimized by a raised tone hole



Upper joint fitted together with the crimped metal lower joint



Efficient sealing: leather pads fitted with resonators for the low notes (except Eb), Gore-Tex pads on the upper join and cork pads for the 12th key



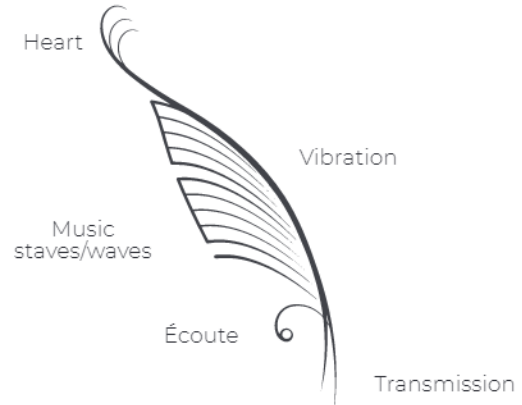
The feather, a symbol of lightness and creative freedom



New ring design

The original laser engraving on the bottom body of the instrument is inspired by the values of generosity, listening and transmission of the musical practice.

To complete their **aesthetics**, the Muse clarinets have two flat black chrome-plated metal rings, as well as two silver-plated rings with a new design.



Accessories delivered with the Muse clarinet



Echo is a universal mouthpiece suitable for all clarinetists and the first Henri SELMER Paris clarinet mouthpiece to be entirely manufactured on a digitally controlled machine, giving it an unprecedented production stability.



silver-plated ligature and cap



swab



soft cloth



cork grease



Inspirational Notebook (160 pages)



PRISMe single or double case

BB & A CLARINETS <i>Muse</i>			
		BB	A
ITEM CODE	18 clés	19 clés	1105112411
	1104112411	1104113411	
EAN	3700317638244	3700317644825	3700317638268



Henri SELMER Paris

Designer and manufacturer of wind instruments and mouthpieces since 1885