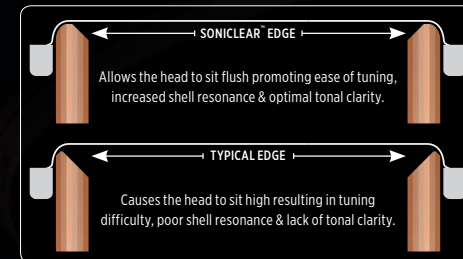
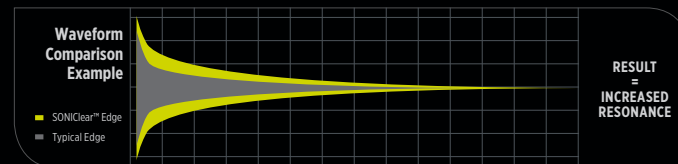
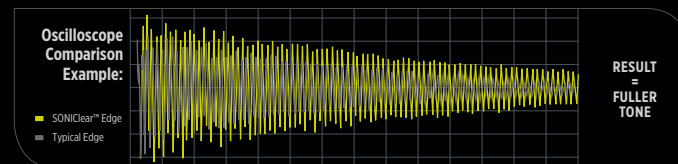




SHARED FEATURES



The **SONICclear™ Bearing Edge** is standard on all Black Panther Design Lab Shells and allows the drumhead to sit flatter and make better contact with the shell. The result is a clearer fundamental pitch, effortless and consistent tuning, and a significantly expanded tuning range.



The **Puresound™ Custom Series 16-Strand Wires** feature medium-gauge wire with evenly spaced standard coils, providing an even balance between snare response and shell sound.



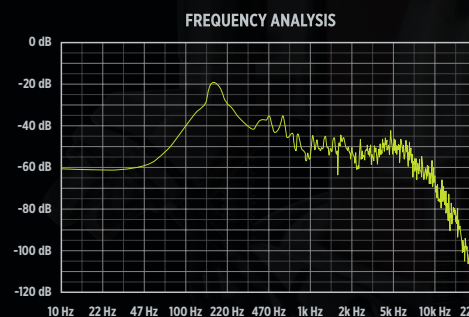
The **Cylinder-Drive Strainer** and **Butt-End Adjuster** use a self-lubricating bearing to ensure smooth operation. The adjustment dial employs "micro-lock" technology that provides precise control and prevents the snare wires from loosening during play.



HEARTBREAKER

Concept Hybrid: **DARK / RUSTIC / THROATY**

The all-mahogany shell and reinforcement rings of the Heartbreaker snare blend historic snare drum tone with modern snare design. It combines the dark, rustic, and throaty sounds of rock classics, but easily fits with today's more organic alternative styles.



The softer Mahogany shell and edge reinforcement rings of the Heartbreaker snare give significant boosts in 150-400 Hz frequency range, creating a big and full sound that takes up a lot of sonic space.

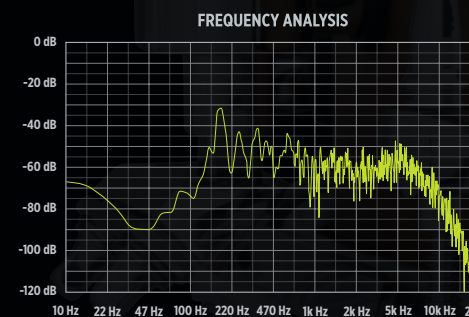
- Size: 14" x 6"
- Shell: 8-ply 8mm Mahogany, 4-ply 4mm Mahogany Reinforcement Rings, Dual Air Vents
- Finish: Natural Satin SAS Finish (SONICclear™ Attenuation System)
- Edges: 45° SONICclear™ Batter and Snare Side (both with 3/8" Rounded Back-Cuts)
- Snare Bed: 2.7mm Deep x 5 1/2" Width Tapered Snare Beds
- Hoops: Sonic Saver™ 10-Lug Hoops with Brushed Black-Chrome Finish
- Lug Casings: Black Panther Single-Screw Lugs with Brushed Black-Chrome Finish
- Snare Wires: Puresound™ Custom Series 16-Strand Stainless Steel Coils with Copper End-Plates
- Drumheads: Remo® Coated Ambassador X Batter, Remo® Clear Ambassador Snare Side
- Model No: BPMH460LNW



CHERRY BOMB

Concept Hybrid: **VINTAGE / CONTROLLED / PRECISE**

A re-imagined and optimized version of the original Black Panther model, the Design Lab Cherry Bomb is crafted with a medium-thick Cherrywood shell. The soft density of Cherry absorbs higher overtones, delivering a warm, focused tone and a punchy backbeat. It sounds and feels vintage, but is built with modern precision, reliability, and function.



The softer Cherry shell produces a pre-EQ'd sound with strong response in the 400-600 Hz range for strong low-end, but with a boost in the 5-7 kHz range to enhance attack, delivering a vintage tone for classic and alt-rock styles.

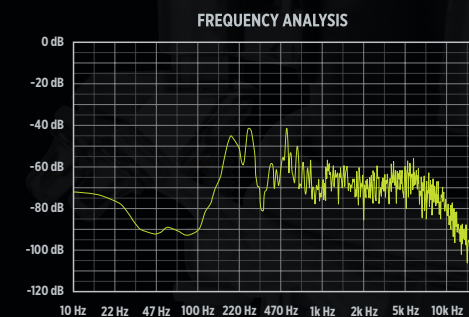
- Size: 13" x 5.5" or 14" x 6"
- Shell: 8-ply 9mm Cherry, Dual Air Vents
- Finish: Natural Satin SAS Finish (SONICclear™ Attenuation System)
- Edges: 45° SONICclear™ Batter and Snare Side (both with 3/8" Rounded Back-Cuts)
- Snare Bed: 2.7mm Deep x 5 1/2" Width Tapered Snare Beds
- Hoops: Sonic Saver™ 10-Lug Hoops with High-Gloss Chrome Finish
- Lug Casings: Black Panther Single-Screw Lugs
- Snare Wires: Puresound™ Custom Series 16-Strand Stainless Steel Coils with Copper End-Plates
- Drumheads: Remo® Coated Ambassador X Batter, Remo® Clear Ambassador Snare Side
- Model No: 13" - BPCW3550CNW
14" - BPCW4600CNW



EQUINOX

Concept Hybrid: **CLASSIC / BRIGHT / ARTICULATE**

A North American Maple shell, reinforcement rings, and the classic styling of single-flanged hoops make Equinox evoke musical traditions and modern execution. This drum possesses the controlled articulation needed to hear the most subtle ghost notes with a bright and open presence at full volume.



The harder all-Maple shell and edge reinforcement rings raise the frequency response in the 1-3 kHz range, giving this drum a clear and bright tone to cut through guitars, larger ensembles and horn bands.

- Size: 14" x 5"
- Shell: 6-ply 6mm Maple, 4-ply 4mm Maple Reinforcement Rings, Dual Air Vents
- Finish: Ebony Satin SAS Finish (SONICclear™ Attenuation System)
- Edges: 45° SONICclear™ Batter Side, 35° SONICclear™ Snare Side (both with 3/8" Rounded Back-Cuts)
- Snare Bed: 2.7mm Deep x 5 1/2" Width Tapered Snare Beds
- Hoops: Copper Alloy Single-Flange with 10 Hoop Claws per side and a High-Gloss Chrome Finish
- Lug Casings: Black Panther Single-Screw Lugs (Staggered for Increased Tuning Range)
- Snare Wires: Puresound™ Custom Series 16-Strand Stainless Steel Coils with Copper End-Plates
- Drumheads: Remo® Fiberskyn 3 Diplomat, Remo® Clear Ambassador Snare Side
- Model No: BPML4500CFB



SAS (SONIClear™ Attenuation System) Finish

The Natural Satin SAS Finish brings out the beautiful character of the woods used in the drums, but also allows the shell to vibrate fully due its extremely low-mass application. Thicker finishes like high-gloss add mass to the shell and shorten sustain. Future Design Lab models may employ a thicker finish to create a more focused sound.

CONCEPT HYBRID

The Black Panther Design Lab identifies a combination of performance characteristics, called a “concept hybrid”, desired by top players based on their advanced live and studio needs. We then reverse engineer those performance characteristics by blending different tone woods, bearing edge profiles, counterhoop styles, lug casings, snare wires, drumheads, and shell finishes to achieve the desired result.

THE JANKA SCALE

Softer tonewoods (lower on the scale) produce a naturally lower fundamental pitch and a more focused sustain. Harder tonewoods produce a naturally higher fundamental pitch, which results in brighter overtones and increased sustain.



BE ON THE LOOKOUT FOR FUTURE ADDITIONS
TO THE BLACK PANTHER DESIGN LAB
LINE OF INSTRUMENTS.



BLACK PANTHER DESIGN LAB

The MAPEX™ Black Panther Design Lab Series embodies the performance qualities desired by top players. These distinctive instruments have been engineered using the Design Lab’s “Concept Hybrid” approach to sound design, shell composition and drum construction. Each drum has been designed to combine “Sound Concepts” to create unique and personal instruments for the demanding player.