



2016 CYMBAL GUIDE

contents

1 This is MEINL

- 2 The MEINL Cymbal Series
- 4 The Sounds, The Bronzes

5 **NEW!** Cymbals and Sounds

6 Six Degrees of Darkness

- 8 Byzance Traditional
- 10 Byzance Vintage
- 12 Byzance Jazz
- 14 Byzance Extra Dry
- 16 Byzance Dark
- 18 Byzance Brilliant

20 Modern

- 22 M-Series Fusion
- 24 M-Series Traditional
- 26 Soundcaster Fusion
- 28 Soundcaster Custom

30 Aggressive

- 32 Mb20
- 34 Mb10
- 36 Mb8

38 Clarity and Cut

- 40 Classics
- 42 Classics Custom
- 44 Classics Custom Extreme Metal

46 Innovation

- 48 Generation X

50 First Step

- 52 MCS
- 54 HCS

56 Drum Gear

- 56 Meinl Artist Series Cymbal Bags
- 57 Cymbal Bags
- 58 Cymbal Cases, Drummer Gloves
- 59 Stick Bags
- 60 Practice Pads
- 61 Drum Rugs
- 62 Bacon, Ching Ring, Laptop Table
- 63 Hardware, Cymbal Cleaners

64 Candela Percussion Cymbals

66 Symphonic Cymbals

68 Marching Cymbals

Thank you for interest in MEINL cymbals.
If you require more information, please
visit our website or contact us directly.



meinlcymbals.com



facebook.com/meinlcymbalsfanpage



twitter.com/meinlcymbals



google.com/+MEINLcymbalsOfficial



youtube.com/meinlcymbals



weibo.com/meinlcymbalschina



vimeo.com/meinlcymbals



meinlcymbals.tumblr.com



instagram.com/meinlcymbals

Roland Meinl Musikinstrumente GmbH & Co. KG
Musik-Meinl-Str. 1
D-91468 Gutenstetten
Germany

Email: info@meinlcymbals.com



Though effort has been made to ensure content is correct, typographical errors may be present. Products and related claims subject to change without notice. No part of the catalog may be reprinted, reproduced, or included in any online services in any form in whole or in part without the prior written permission of MEINL Cymbals.
Printed in Germany. M-CA401215

WayneB MARKETING & MEINL

... Not Like Everybody Else.

One of the great things about being a drummer is the opportunity to be different...to be yourself. When you listen to all the greats, they're not like everybody else. They're themselves. We like that.

Today it is difficult to be totally original or 100% unique, but that does not mean you must be like all the others. At MEINL we do our own thing. That's just who we are; and we like to think you want to be who you are too. There's a freedom that comes with that.

Maybe you know that we are also drummers? So when we say MEINL is 'By drummers, for drummers', we mean it. We are also always looking to create new things for drummers and better ways to do that, so there is a lot of innovation in what we do and how we do it. As you will see on the following pages, MEINL innovations aren't limited to just designing new cymbals. No, they extend to how those cymbals are made, the fact that we are the first to use four types of bronze and that we also offer such a wide variety of traditional and modern sounds. Of course we respect tradition, but really the future is where we are going.

But the greatest thing for all of us at MEINL is the friendships we share with drummers, and the trust they put in us. To us, that is our greatest achievement to date.

Possibly all of this makes MEINL that little bit different. But then like you we are drummers, and drummers are not like everybody else.



THE MEINL CYMBAL SERIES

Six Degrees of Darkness



Byzance

TRADITIONAL

VINTAGE

JAZZ

EXTRA DRY

DARK

BRILLIANT

Modern



M

M-SERIES
— FUSION —

M

M-SERIES
— TRADITIONAL —

Sound
caster
CUSTOM

Sound
caster
CUSTOM

Aggressive



Mb²⁰

Mb¹⁰

Mb⁸

Innovation



9 generation X

Clarity and Cut



CLASSICS

CLASSICS
— CUSTOM —

CLASSICS
CUSTOM
EXTREME METAL SERIES

First Step



MCS

HCS

THE SOUNDS

Darker sounds blend with the music, brighter ones cut through. Many players mix them together.

THE BRONZES

Only MEINL offers four bronzes. High numbers deliver more tone; lower ones sound brighter and tonally tighter.

Dark



- Byzance Extra Dry
- Byzance Vintage
- Byzance Jazz
- Byzance Dark
- Byzance Brilliant
- Byzance Traditional

Mid



- M-Series Fusion
- M-Series Traditional
- Soundcaster Fusion
- Soundcaster Custom

Bright



- Classics Custom
- Mb10
- Classics
- MCS
- Mb20
- Mb8
- Classics Custom Extreme Metal

B20
BRONZE

- Byzance Traditional
- Byzance Vintage
- Byzance Jazz
- Byzance Extra Dry
- Byzance Dark
- Byzance Brilliant
- M-Series Fusion
- M-Series Traditional
- Mb20



B12
BRONZE

- Soundcaster Fusion
- Soundcaster Custom



B10
BRONZE

- Mb10
- Classics Custom
- Classics Custom Extreme Metal



B8
BRONZE

- Mb8
- Classics
- MCS



WHAT'S NEW?

MEINL is known for having the absolute widest selection of cymbal sounds and effects. What you see on this page adds to that ever-expanding tradition.

Byzance Jazz Tradition add-on 18" Tradition Light Crash

This new crash cymbal in MEINL's Byzance Jazz Tradition series features a steep bow which is responsible for the rapid and mellow-dark sound. Its extra thin edge allows for a quick build. It's a perfect addition to the Jazz Tradition line which is crafted in the old-world fashion, meaning hand-hammered into shape in Turkey. There are no mass production short cuts to the authentic Turkish cymbal sound.



Byzance Extra Dry Dual add-ons 10" Dual Splash, 16" Dual Crash

Both of these new cymbals offer a fast and sensitive response with a short decay. They open up easily for trashy accents and allowing wide dynamic options. Dual cymbals have a stunning contrast of the extra dry and brilliant finishes with a unique combination of hammering and lathing. They are the result of extensive R&D work and have become one of MEINL's most popular cymbal series in the last year.

LOOK FOR NEW!

Look for the new 20" HCS on page 55, new Compact Stick Bag on page 59, the new Cymbal Bacon on page 62 and new Marching Cymbals on page 68!



Byzance Dark add-ons 20" Dark Crash, 20" and 24" Big Apple Dark Rides

The new 20" Dark Crash offers a low frequency range, and an esoteric character caused by the untreated finish. It sounds earthy with a strong attack and short sustain. With their small bells and full bodied ping, the two new 20" and 24" Big Apple Dark Rides deliver dark sonic qualities with an overall complex character.

Byzance Vintage cymbals 10" Trash Splash, 16" Vintage Pure Hihat

The different sized cut-outs give the new 10" Trash Splash its unique look and lots of trashiness. The sandblasted surface adds to the soft feel of this thin splash cymbal. The new 16" Vintage Pure Hihat features a dry and very direct stick sound. When played by foot, they respond instantly with a cutting chick. Complete tonal control with a distinctive and earthy look.



Classics Custom Dark cymbals 10" Dark Splash, 18" Dark China, 21" Dark Crash, 22" Dark Crash-Ride

The new Dark Splash and China offer cutting and quick accents with a short sustain and a noticeably dark undertone. The Crash-Ride features outstanding crash and ride abilities in one cymbal. Additional hammering was applied to all of the new Classics Custom Dark cymbals which add a trashier note to their overall sound characteristic. All Meinl Classics Custom Dark cymbals are made in Germany using computer controlled hammering and lathing techniques with a special surface treatment. They are recommended for Heavy Metal, Hard Rock, Rock, and similar styles of music.

Byzance

SIX DEGREES OF DARKNESS

TRADITIONAL

VINTAGE

JAZZ



**EXTRA
DRY**

DARK

BRILLIANT



Byzance

TRADITIONAL

Dark Warmth

Their hammered and lathed surfaces, warm sounds and selection of models may be very traditional, but these cymbals are the ultimate choice when it comes to versatility. Rides with a buttery-soft feel. Crashes that range from dark and shimmering with thin models, to powerful and focused with heavier ones. Traditional tone and sonic individuality come together in each of these cymbals.



METAL

B20
BRONZE

SHAPING

Hand Hammered

LATHE

Narrow Blade

FINISH

Traditional

SOUND

Mid-Bright, Warm



SPLASHES

- 6" B6S
- 8" B8S
- 10" B10S
- 12" B12S



CHINAS

- 14" B14CH
- 16" B16CH
- 18" B18CH
- 20" B20CH
- 22" B22CH



FLAT CHINAS

- 16" B16FCH
- 18" B18FCH



MINI HAT

- 10" B10MH



HIHATS

- Thin**
- 14" B14TH
- Medium**
- 13" B13MH
 - 14" B14MH
 - 15" B15MH
 - 16" B16MH
- Heavy**
- 14" B14HH



CRASHES

- Thin**
- 14" B14TC
 - 15" B15TC
 - 16" B16TC
 - 17" B17TC
 - 18" B18TC
- Medium Thin**
- 16" B16MTC
 - 17" B17MTC
 - 18" B18MTC
 - 19" B19MTC

- Medium**
- 16" B16MC
 - 18" B18MC
 - 20" B20MC
 - 21" B21MC
 - 22" B22MC



EXTRA THIN HAMMERED CRASHES

- 18" B18ETHC
- 20" B20ETHC



RIDES

- | | |
|---------------|--------------|
| Medium | Heavy |
| 20" B20MR | 20" B20HR |
| 21" B21MR | 21" B21HR |
| 22" B22MR | 22" B22HR |
| 23" B23MR | 23" B23HR |
| 24" B24MR | |



SIZZLE RIDE

- Medium**
- 20" B20MR-S



STYLES

Rock, Pop, Fusion, Jazz, Funk, R&B, Reggae, Studio, World

TO CLEAN

MEINL Cymbal Cleaner



Byzance

VINTAGE

Dark Shimmer

The low, dark and somewhat dry washy sound of these models – most of which have a matte sandblasted finish – isn't too soft or too loud. With its great stick definition and short sustain, you can dig into Byzance Vintage for total control at all times. It has a sound that fits into any music that isn't in the upper decibel levels.



METAL

B20
BRONZE

SHAPING

Hand Hammered

LATHE

Narrow Blade

FINISH

Sandblasted

SOUND

Dark, Dry



SPLASH

10" B10VS



NEW!
TRASH SPLASH

10" B10TRS



TRASH CRASHES

16" B16TRC
18" B18TRC
20" B20TRC



VINTAGE CRASHES

16" B16VC
18" B18VC
20" B20VC
22" B22VC



VINTAGE PURE HIHATS

14" B14VPH
15" B15VPH
16" B16VPH **NEW!**



VINTAGE PURE CRASHES

18" B18VPC
20" B20VPC



VINTAGE PURE RIDES

Vintage Pure
20" B20VPR
22" B22VPR
Vintage Pure Light
20" B20VPLR
22" B22VPLR



BENNY GREB SIGNATURE SAND MODELS

SAND HAT

14" B14SAH



SAND CRASHES

Thin
18" B18SATC
Medium
18" B18SAMC



SAND CRASH-RIDE

22" B22SACR



SAND RIDES

20" B20SAR
22" B22SAR



MIPA Winner



SAND CYMBAL SET

BV-141820SA
14" Sand Hat
18" Sand Thin Crash
20" Sand Ride



STYLES

Pop, Fusion, Jazz, Funk, R&B, Reggae, Studio, World, Electro

TO CLEAN

Not recommended

Byzance

JAZZ

Dark Tonality

Byzance Jazz. The touch and tone of these cymbals, with their soft, buttery, sink-your-stick feel and low, dark tonalities, add up to a very personalized sound. A closer look at the hammering on some models reveals large and deep dimpling that boosts dryness and darkness.



METAL

B20
BRONZE

SHAPING
Hand Hammered

LATHE
Narrow Blade

FINISH
Traditional

SOUND
Dark, Tonally Complex

TRADITION HIHAT

14" B14TRH



TRADITION CRASH

Tradition Light
18" B18TRLC **NEW!**



TRADITION RIDES

Tradition
20" B20TRR
22" B22TRR



Tradition Light
20" B20TRLR
22" B22TRLR

TRADITION FLAT RIDE

22" B22TRFR



NUANCE RIDE

21" B21NUR

Ralph Peterson's
signature cymbal



SYMMETRY RIDE

22" B22SYR

Ralph Peterson's
signature cymbal



CLUB RIDES

20" B20JCR
22" B22JCR

Wolfgang Haffner's
signature cymbals



SPLASH

10" B10JS



HIHATS

Thin
13" B13JTH
14" B14JTH



CRASHES

Extra Thin
16" B16JETC
17" B17JETC
18" B18JETC



Thin
16" B16JTC
17" B17JTC
18" B18JTC
20" B20JTC

Medium Thin
16" B16JMTC
17" B17JMTC
18" B18JMTC
20" B20JMTC

CHINA RIDE

22" B22JCHR



RIDES

Extra Thin
20" B20JETR
22" B22JETR

Thin
20" B20JTR
22" B22JTR

Medium Thin
20" B20JMTR
22" B22JMTR

Medium
20" B20JMR
22" B22JMR



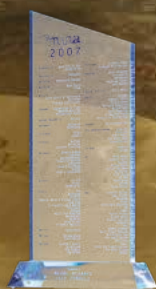
BIG APPLE RIDES

20" B20JBAR
22" B22JBAR



FLAT RIDE

20" B20JFR



MIPA Winner
Byzance Jazz



Byzance

EXTRA DRY



METAL

B20
BRONZE

SHAPING

Hand Hammered

LATHE

None

FINISH

Raw

SOUND

Dark, Extra Dry

Dark Definition

Living up to their name, these cymbals are extremely dry, with low-pitched, trashy sounds and short sustain. The raw unlathed surfaces and extensive hand hammering suggest that their sound might be loud and fierce. In reality, the Extra Dry series reveals its dark, earthy tones and comes to life when played at lower volumes.



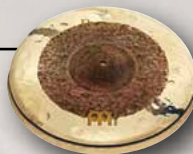
NEW!
DUAL SPLASH

- 10" B10DUS



DUAL HIHAT

- 15" B15DUH



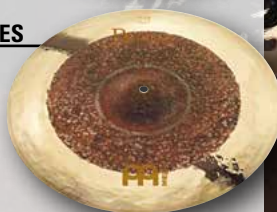
DUAL CRASHES

- 16" B16DUC **NEW!**
- 18" B18DUC



DUAL CRASH-RIDES

- 20" B20DUCR
- 22" B22DUCR



SPLASHES

- 10" B10EDS
- 12" B12EDS



CHINAS

- 16" B16EDCH
- 18" B18EDCH
- 20" B20EDCH



HIHATS

- Medium Thin**
- 15" B15EDMTH
 - 16" B16EDMTH



- Medium**
- 13" B13EDMH
 - 14" B14EDMH

CRASHES

- Thin**
- 16" B16EDTC
 - 17" B17EDTC
 - 18" B18EDTC
 - 19" B19EDTC
 - 20" B20EDTC



RIDES

- Thin**
- 20" B20EDTR
 - 22" B22EDTR



- Medium**
- 20" B20EDMR
 - 22" B22EDMR

TRANSITION RIDE

- 21" B21TSR



Mike Johnston's signature cymbal



Byzance

DARK



METAL

B20
BRONZE

SHAPING

Hand Hammered

LATHE

Abraded

FINISH

Dark

SOUND

Mid-Dark, Earthy

Dark Intensity

Their sound is dark, and so is their oven-blackened look. Byzance Dark models are intense, with responses ranging from the defined sticking of the rides, to the short, punchy bursts of the crashes. Their unique sonic qualities are ideal for music where dark tone and feel are at the top of the 'must have' list.



SPLASHES

- 8" B8DAS
- 10" B10DAS



CHINA

- 18" B18DACH



HIHATS

- 13" B13DAH
- 14" B14DAH
- 15" B15DAH



SPECTRUM HIHATS

- 13" B13SH
- 14" B14SH



Rodney Holmes' signature cymbals

CRASHES

- 16" B16DAC
- 17" B17DAC
- 18" B18DAC
- 20" B20DAC **NEW!**



RIDES

- 20" B20DAR
- 21" B21DAR
- 22" B22DAR



RAW BELL RIDES

- 20" B20RBR
- 22" B22RBR



SPECTRUM RIDE

- 22" B22SR

Rodney Holmes' signature cymbal



SKY RIDE

- 19" B19SKR

Noriaki Kumagai's signature cymbal



BIG APPLE DARK RIDES

- 20" B20BADAR **NEW!**
- 22" B22BADAR
- 24" B24BADAR **NEW!**



STYLES

Pop, Fusion, Jazz, Funk, R&B, Reggae, Studio, World, Electro

TO CLEAN

MEINL Cymbal Cleaner



Byzance

BRILLIANT



METAL

B20
BRONZE

SHAPING

Hand Hammered

LATHE

Narrow Blade

FINISH

Brilliant

SOUND

Mid-Bright, Tonally Rich

Dark Brightness

Though 'Brilliant' refers to its finish, this series actually takes the traditional Byzance and darkens its sound. This darker sound is due to a finishing process that limits the high end as the cymbal is buffed to its brilliant look. Heavier models penetrate with directness, thinner ones shimmer with warmth. The overall combination of dark tonality and warm spread make Byzance Brilliant a great choice for everything from funk and fusion to rock.



SPLASHES

- 6" B6S-B
- 8" B8S-B
- 10" B10S-B



CHINAS

- 14" B14CH-B
- 16" B16CH-B
- 18" B18CH-B
- 20" B20CH-B



HIHATS

Medium

- 13" B13MH-B
- 14" B14MH-B



Heavy

- 14" B14HH-B

FAST HIHATS

- 13" B13FH
- 14" B14FH



Thomas Lang's signature cymbals

SERPENTS HIHATS

- 13" B13SH-B
- 14" B14SH-B



Derek Roddy's signature cymbals

CRASHES

Thin

- 14" B14TC-B
- 15" B15TC-B
- 16" B16TC-B
- 17" B17TC-B
- 18" B18TC-B



Medium Thin

- 16" B16MTC-B
- 17" B17MTC-B
- 18" B18MTC-B
- 19" B19MTC-B

Medium

- 16" B16MC-B
- 18" B18MC-B
- 20" B20MC-B

RIDES

Medium

- 20" B20MR-B
- 21" B21MR-B
- 22" B22MR-B
- 24" B24MR-B



Heavy

- 20" B20HR-B
- 22" B22HR-B

SERPENTS RIDE

- 21" B21SR-B

Derek Roddy's signature cymbal



STYLES

Rock, Pop, Fusion, Funk, R&B, Reggae, Studio

TO CLEAN

MEINL Cymbal Polish



Brighter Sounds

While traditional cymbal making covers the warmer, darker end of the sound spectrum, it takes modern cymbal making technology to create brighter, glassier sounds. With M-Series and Soundcaster those qualities come to life through unique sounds and stunning looks.

MODERN





MEINL
Sound
caster
FUSION

MEINL
Sound
caster
CUSTOM

MEINL
MEINL

MEINL
MEINL

MEINL
MEINL

MEINL
MEINL

Modern Versatility

The design may grab your attention first, but the sound is the real winner here. With two very distinct playing surfaces, M-Series Fusion is all about being fast and versatile. A wide, thinner edge that responds with sensitivity and speed. A denser bow area for increased sticking clarity. A lathed and polished bell for bright definition. All of these characteristics result in a level of tonal brilliance that makes these cymbals 'sing.'



M - S E R I E S

— F U S I O N —



METAL

SHAPING

Computerized Hammering

LATHE

Pinpoint

FINISH

Traditional & Brilliant

SOUND

Mid-Bright, Modern



SPLASH

10" MS10FS



HIHAT

Medium
14" MS14FMH



CRASHES

Medium
16" MS16FMC
18" MS18FMC



RIDES

Medium
20" MS20FMR
22" MS22FMR



STYLES

Rock, Pop, Fusion, R&B, Reggae, Studio

TO CLEAN

MEINL Cymbal Cleaner

Modern Traditional

This selection of medium and heavy models combines traditional B20 bronze with modern technology, resulting in crisp mid-range responses. Great for rock, pop and r & b, where a clarity and consistency of every stroke is what you need. M-Series Traditional is a modern concept built on traditional sounds.



M - S E R I E S

— T R A D I T I O N A L —



METAL

SHAPING

Computerized Hammering

LATHE

Pinpoint

FINISH

Traditional

SOUND

Mid-Bright, All-Around



MEINL
M
M-SERIES
18" Medium Crash

MEINL

BELL

8.5" MS85B



SPLASH

10" MS10S



HIHATS

Medium

13" MS13MH

14" MS14MH

Heavy

14" MS14HH



CRASHES

Medium

15" MS15MC

16" MS16MC

17" MS17MC

18" MS18MC

Heavy

16" MS16HC

18" MS18HC



RIDES

Medium

20" MS20MR

22" MS22MR

Heavy

20" MS20HR



STYLES

Rock, Pop, Fusion, R&B, Reggae, Studio

TO CLEAN

MEINL Cymbal Cleaner

Modern Tone

The name is the giveaway. This range is a fusion of two different playing surfaces and sounds. Their micro hammering and semi-lathed surface gives them a shorter sustain and a slightly darker mid-range tone. Soundcaster Fusion's versatility lets you dig in, be heard and play most any style of music.

Sound caster FUSION



METAL

B12
BRONZE

SHAPING

Computerized Hammering

LATHE

Pinpoint

FINISH

Traditional &
Brilliant

SOUND

Mid-Dark, Warm



SPLASHES

- 8" SF8S
- 10" SF10S



CHINAS

- 16" SF16CH
- 18" SF18CH
- 20" SF20CH



HIHATS

- Medium**
- 13" SF13MH
 - 14" SF14MH



CRASHES

- Thin**
- 16" SF16TC
 - 18" SF18TC



- | | |
|---------------|-----------------|
| Medium | Powerful |
| 14" SF14MC | 16" SF16PC |
| 16" SF16MC | 18" SF18PC |
| 17" SF17MC | 19" SF19PC |
| 18" SF18MC | 20" SF20PC |

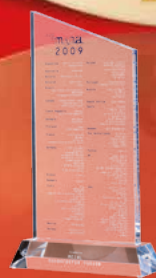
TRASH CRASHES

- 16" SF16TRC
- 18" SF18TRC



RIDES

- Thin**
- 20" SF20TR
- Medium**
- 20" SF20MR
- Powerful**
- 20" SF20PR
 - 22" SF22PR



MIPA Winner
Soundcaster Fusion



STYLES

Rock, Pop, Fusion, R&B, Reggae, Studio

TO CLEAN

MEINL Cymbal Cleaner

Modern Brilliance

With a brilliant finish that highlights a hammered and lathed surface, Soundcaster Custom's B12 bronze gives these cymbals the flexibility to absorb solid stick hits and still sound great. They deliver solid lows, warm mids and boosted highs. Their dynamic range and musical muscle enables these cymbals to cut through most any style of music.

Sound
caster
CUSTOM



METAL

B12
BRONZE

SHAPING

Computerized Hammering

LATHE

Wide Blade

FINISH

Brilliant

SOUND

Mid-Bright, Brilliant



SPLASHES

- 6" SC6S-B
- 8" SC8S-B
- 10" SC10S-B
- 12" SC12S-B



DISTORTION SPLASH

- 12" SC12DS-B



PICCOLO TRASH CHINAS

- 10" SC10PTRCH-B
- 12" SC12PTRCH-B



CHINAS

- 16" SC16CH-B
- 18" SC18CH-B
- 20" SC20CH-B



HIHATS

Medium

- 13" SC13MH-B
- 14" SC14MH-B



Powerful

- 14" SC14PH-B

SOUNDWAVE HIHATS

Medium

- 14" SC14MSW-B



Powerful

- 14" SC14PSW-B

CRASHES

Thin

- 16" SC16TC-B
- 18" SC18TC-B



Medium

- 14" SC14MC-B
- 15" SC15MC-B
- 16" SC16MC-B
- 17" SC17MC-B
- 18" SC18MC-B

Powerful

- 16" SC16PC-B
- 17" SC17PC-B
- 18" SC18PC-B
- 19" SC19PC-B
- 20" SC20PC-B

RIDES

Medium

- 20" SC20MR-B

Powerful

- 20" SC20PR-B
- 21" SC21PR-B
- 22" SC22PR-B



MEGA BELL RIDE

- 22" SC22MBR-B



STYLES

Metal, Rock, Pop, Reggae, Studio

TO CLEAN

MEINL Cymbal Cleaner

AGGRESSIVE METALS

Mb10



Mb8

Mb20



Three Levels of Aggression

Three different cymbals, created from three different metals, producing three different sounds, have one thing in common: Their bright responses are aggressive! Mb20 is powered by thick bronze for maximum projection. Mb10 delivers a more focused degree of cut. Mb8 slices through with a direct response. This trio delivers three levels of aggression designed to cut through the loudest music.

Mb20

B20
BRONZE

Mb20
22" Heavy Bell Tone

Mb20
18" Rock China

M MEINL

Mb20

Mb20

B20
BRONZE

METAL

SHAPING
Hand Hammered

LATHE
Narrow Blade

FINISH
Brilliant

SOUND
Bright, Aggressive

Hand Hammered Aggression

When we decided it was time for a B20 hand hammered cymbal that could cut it in rock and metal, we designed Mb20. These cymbals combine musicality and volume in a range of medium-heavy and heavyweight models for maximum projection. Slightly dark and completely in your face, Mb20 is a great example of how we are repurposing hand hammered cymbals for today's music.



ROCK SPLASH

10" MB20-10RS-B



ROCK CHINAS

18" MB20-18RCH-B
20" MB20-20RCH-B



HIHAT

Heavy Soundwave
14" MB20-14HSW-B



CRASHES

Medium Heavy
16" MB20-16MHC-B
18" MB20-18MHC-B



Heavy

16" MB20-16HC-B
17" MB20-17HC-B
18" MB20-18HC-B
19" MB20-19HC-B
20" MB20-20HC-B
22" MB20-22HC-B

HEAVY BELL RIDES

20" MB20-20HBR-B
22" MB20-22HBR-B



PURE METAL RIDE

24" MB20-24PMR-B

Chris Adler's
signature cymbal



With **FREE** 24" Chris Adler
Artist Series Cymbal Bag



STYLES
Metal, Rock, Studio

TO CLEAN
MEINL Cymbal Polish

Mb10

B10
BRONZE



B10
BRONZE

METAL

SHAPING

Computerized Hammering

LATHE

Pinpoint

FINISH

Brilliant

SOUND

Bright, Balanced

Cutting Aggression

With its punchy response and bright, glassy tone, Mb10 is yet another innovation from the MEINL R&D team. We introduced B10 bronze (90% copper, 10% tin) so drummers would have another fresh sound to add to their set-up. Shaped by computerized hammering and buffed to a brilliant finish, Mb10 is extremely durable and responds with a glassy shimmer that cuts with aggression.



SPLASHES

- 8" MB10-8S-B
- 10" MB10-10S-B
- 12" MB10-12S-B



CHINAS

- 17" MB10-17CH-B
- 19" MB10-19CH-B



SOUNDWAVE HIHATS

- Medium**
- 14" MB10-14MSW-B
 - 15" MB10-15MSW-B



- Heavy**
- 14" MB10-14HSW-B

FAT HAT

- 16" MB10-16FH-B

Flo Dauner's signature cymbal



CRASHES

- Thin**
- 16" MB10-16TC-B
 - 18" MB10-18TC-B



- Medium**
- 14" MB10-14MC-B
 - 15" MB10-15MC-B
 - 16" MB10-16MC-B
 - 17" MB10-17MC-B
 - 18" MB10-18MC-B
 - 19" MB10-19MC-B
 - 20" MB10-20MC-B
- Heavy**
- 16" MB10-16HC-B
 - 18" MB10-18HC-B
 - 20" MB10-20HC-B

RIDES

- Medium**
- 20" MB10-20MR-B
 - 21" MB10-21MR-B

- Heavy**
- 20" MB10-20HR-B
 - 22" MB10-22HR-B



STYLES
Rock, Pop, Fusion, R&B, Reggae, Studio

TO CLEAN
MEINL Cymbal Cleaner



Mb8



B8
BRONZE

Mb8

Mb8

Mb8
16" Medium Crash

Mb8



METAL

B8
BRONZE

SHAPING

Computerized Hammering

LATHE

Wide Blade

FINISH

Brilliant

SOUND

Bright, Explosive

Focused Aggression

B8 alloy delivers the tightest, most tonally focused and direct sounds of our four bronzes. This means Mb8 cymbals sound very bright, loud, tight and cutting. There is no lush warmth here. Crashes are fast and punchy, while rides and hats deliver with clarity. Such direct and penetrating sounds – as well as a very nice price – make Mb8 a favorite for rock and metal.



SPLASHES

- 8" MB8-8S-B
- 10" MB8-10S-B
- 12" MB8-12S-B



CHINAS

- 16" MB8-16CH-B
- 18" MB8-18CH-B
- 20" MB8-20CH-B



MINI HAT

- 10" MB8-10MH-B



HIHATS

Medium

- 13" MB8-13MH-B
- 14" MB8-14MH-B

Heavy

- 14" MB8-14HH-B



CRASHES

Medium

- 14" MB8-14MC-B
- 16" MB8-16MC-B
- 17" MB8-17MC-B
- 18" MB8-18MC-B
- 19" MB8-19MC-B
- 20" MB8-20MC-B

Heavy

- 16" MB8-16HC-B
- 18" MB8-18HC-B
- 20" MB8-20HC-B



RIDES

Medium

- 20" MB8-20MR-B
- 22" MB8-22MR-B

Heavy

- 20" MB8-20HR-B
- 22" MB8-22HR-B



GHOST RIDE

- 21" MB8-21GR

Brann Dailor's signature cymbal



STYLES
Metal, Rock, Pop, Studio

TO CLEAN
MEINL Cymbal Cleaner



CLARITY AND CUT

CLASSICS



LOUD!

Loud. Louder. Loudest. From the loud Classics, to the louder Classics Custom to the loudest, Classics Custom Extreme Metal, this trio of innovative cymbals is all about high-energy response. These cymbals add pure punch wherever clarity and cut are a must. Ideal for pop, rock, and the most brutal metal imaginable, all three will get you heard.

CLASSICS
— CUSTOM —

CLASSICS
— CUSTOM —
EXTREME METAL SERIES



LOUDER!!

LOUDEST!!!

CLASSICS

Powered by bright, widely lathed B8 bronze, this nicely priced series is great for cutting through most volumes. With explosive crash responses and glassy ride definition, Classics models may not be as powerful as the very different Custom or Extreme Metal, but their ability to project is unquestionable.

LOUD!



METAL



SHAPING
Pressure Point Technology

LATHE
Wide Blade

FINISH
Traditional

SOUND
Bright, Clear



BELLS

- 8" C8BL Low
- 8" C8BM Medium
- 8" C8BH High



SPLASHES

- 8" C8S
- 10" C10S
- 12" C12S



CHINA SPLASH

- 10" C10CS



CHINAS

- 12" C12CH
- 14" C14CH
- 16" C16CH
- 18" C18CH



MINI HAT

- 10" C10MH



HIHATS

- Medium
- 14" C14MH
- Powerful
- 14" C14PH



SOUNDWAVE HIHATS

- Medium
- 14" C14MSW
- Powerful
- 14" C14PSW



CRASHES

- Thin
- 16" C16TC
- 18" C18TC
- Medium
- 14" C14MC
- 15" C15MC
- 16" C16MC
- 17" C17MC
- 18" C18MC
- 20" C20MC
- Powerful
- 16" C16PC
- 17" C17PC
- 18" C18PC



RIDES

- Medium
- 20" C20MR
- 21" C21MR
- 22" C22MR
- Powerful
- 20" C20PR

NEW!
COMPLETE CYMBAL SET
 C141620
 14" Medium Hihat
 16" Medium Crash
 20" Medium Ride



CLASSICS

— CUSTOM —



LOUDER!!

Made with B10 bronze, Classics Custom models pack a loud and bright punch that gets you heard clearly in every style of music. Designed to cut above the roar of guitars, these cymbals do most of the work for you, so you don't have to play as hard to be heard. With great stick response on the rides and hats, you can dig in and groove, while the crashes deliver powerful accents.



METAL

SHAPING
Pressure Point Technology

LATHE
None

FINISH
Brilliant

SOUND
Bright, Musical

NEW!

DARK SPLASH

10" CC10DAS



DARK HIHAT

14" CC14DAH



DARK CRASHES

16" CC16DAC
18" CC18DAC
19" CC19DAC
20" CC20DAC
21" CC21DAC **NEW!**



NEW!

DARK CHINA

18" CC18DACH



NEW!

DARK CRASH-RIDE

22" CC22DACR



DARK RIDE

20" CC20DAR



BELL

8" CC8B-B



SPLASHES

8" CC8S-B
10" CC10S-B
12" CC12S-B



TRASH SPLASH

12" CC12TRS-B



CHINAS

16" CC16CH-B
18" CC18CH-B



TRASH CHINAS

16" CC16TRCH-B
18" CC18TRCH-B



HIHATS

Medium
14" CC14MH-B
15" CC15MH-B



Powerful
14" CC14PH-B

CRASHES

Medium
14" CC14MC-B
15" CC15MC-B
16" CC16MC-B
17" CC17MC-B
18" CC18MC-B



Powerful
16" CC16PC-B
18" CC18PC-B

TRASH CRASHES

16" CC16TRC-B
18" CC18TRC-B



RIDES

Medium
20" CC20MR-B

Powerful
20" CC20PR-B
22" CC22PR-B



NEW!
COMPLETE CYMBAL SET

CC141620
14" Medium Hi-hat
16" Medium Crash
20" Medium Ride



NEW!
DARK CYMBAL SET

CCD141620
14" Dark Hi-hat
16" Dark Crash
20" Dark Ride

CLASSICS CUSTOM

EXTREME METAL SERIES

Brutally loud and intense, Classics Custom Extreme Metal models are totally effective when it comes to projecting through the loudest and most aggressive music there is. With jumbo-sized hammering and bristling tone, these brilliant finish cymbals deliver their potent mix of clarity and cut with ear-splitting power.

LOUDEST!!!



METAL

SHAPING
Pressure Point Technology &
Computerized Hammering

LATHE
None

FINISH
Brilliant

SOUND
Bright, Penetrating



SPLASH

10" CC10EMS-B



CHINAS

16" CC16EMCH-B
18" CC18EMCH-B



HIHAT

14" CC14EMH-B



CRASHES

16" CC16EMC-B
17" CC17EMC-B
18" CC18EMC-B
19" CC19EMC-B



STACK

16"/18" CC16/18EMS-B



RIDE

20" CC20EMR-B





EXTREME METAL CYMBAL SET

CC-EM480
14" Hi-hat
18" Crash
20" Ride



INNOVATION





When you want something totally different – something wilder than normal – step into Generation X. There are no rules. Innovation is the reason these cymbals exist. This diverse collection of designs looks and sounds creative, even crazy, but it makes perfect sense if what you want are unique sounds to create your own sonic signature.

9eneration X



INNOVATION



METAL Varies | **SHAPING** Pressure Point Technology & Computerized Hammering | **LATHE** Varies | **FINISH** Varies | **SOUND** Mid-Bright, Experimental

DESIGN

IDEAS



ELECTRO STACKS

- 8"/10" GX-08/10ES
- 10"/12" GX-10/12ES

Johnny Rabb's signature cymbals



X-TREME STACK

- 12"/14" GX-12/14XTS



THOMAS LANG SIGNATURE MODELS

FILTER CHINAS

- 8" GX-8FCH
- 10" GX-10FCH
- 12" GX-12FCH
- 14" GX-14FCH
- 16" GX-16FCH



JINGLE FILTER CHINAS

- 10" GX-10FCH-J
- 12" GX-12FCH-J
- 14" GX-14FCH-J



CRASHES

- 16" Synthetik GX-16SYC
- 17" Kompressor GX-17KC
- 18" Kinetik GX-18KC



SIGNAL CRASH/KLUB RIDE

- 18" GX-18SC



TOM'S BECKEN SETS

- GX-TB14/16/18
- 16" Synthetik Crash
- 18" Signal Crash/Klub Ride

- GX-TB14/17/18
- 17" Kompressor Crash
- 18" Kinetik Crash

Both sets include **FREE** 14" Filter China

FX HATS

- 8" GX-8FXH
- 10" GX-10FXH



TRASH HAT

- 12"/14" GX-12/14TH

Benny Greb's signature cymbal



CHINA CRASHES

- 15" GX-15CHC-B
- 17" GX-17CHC-B
- 19" GX-19CHC-B



JOHNNY RABB SIGNATURE MODELS

DRUMBALS

- 8" GX-8DB
- 10" GX-10DB



SAFARI HIHAT

- 12" GX-12SH



SAFARI CRASH

- 16" GX-16SC



SAFARI RIDE

- 18" GX-18SR



THE RABB PACK CYMBAL SET

- GX-12/16/18
- 12" Safari Hihat
- 16" Safari Crash
- 18" Safari Ride
- FREE** 8" Drumbal

STYLES

Rock, Pop, Fusion, R&B, Reggae, Studio, World, Electro

TO CLEAN

MEINL Cymbal Cleaner



MCS

HCS



B8
BRONZE



If you're choosing your first set of real cymbals, HCS and MCS offer looks and sounds that are much more serious than their price tags suggest. Designed by the MEINL R&D team and crafted using our advanced technology, these two nicely priced series let you make your first set-up one that you can be proud of. After all, every drummer wants cymbals they feel good about, right? Take your pick – HCS in brass or MCS in bronze.

TWO METALS, TWO SOUNDS, TWO WAYS TO TAKE YOUR FIRST STEP



MS63
BRASS



MCS

When what you want from your first set of cymbals are cool looks and cutting tones that sound great but won't break your bank account, MCS is a perfect choice. Precision crafted from pro-level bronze, these cymbals give you the cut you need to get your playing heard. Best of all, they let you add serious sounds to your set-up without a serious price tag.



METAL

SHAPING

Pressure Point Technology

LATHE

Wide Blade

FINISH

Traditional

SOUND

Bright, Powerful



SPLASH

10" MCS10S



CHINA

18" MCS18CH



HIHAT

Medium
14" MCS14MH



CRASHES

Medium
14" MCS14MC
16" MCS16MC
18" MCS18MC



CRASH-RIDE

18" MCS18CR



RIDE

Medium
20" MCS20MR



COMPLETE CYMBAL SET

MCS
14" Medium Hihat
16" Medium Crash
20" Medium Ride



HCS

These brass alloy models look and sound great, and let you get into playing MEINL at very realistic prices. We specialize in crafting cymbals from many types of metal, which is why you can play all types of pop or rock with HCS and your sound will be warm. We believe every drummer should play cymbals they feel good about.



MS63
BRASS

HAMMERING
Pressure Point Technology

LATHE
Wide Blade

FINISH
Traditional

SOUND
Mid-Bright, Warm



BELL

8" HCS8B



SPLASHES

8" HCS8S
10" HCS10S
12" HCS12S



TRASH CRASH

16" HCS16TRC



TRASH STACKS

14" HCS14TRS
16" HCS16TRS



CHINAS

12" HCS12CH
14" HCS14CH
16" HCS16CH
18" HCS18CH



HIHATS

13" HCS13H
14" HCS14H



CRASHES

14" HCS14C
16" HCS16C
18" HCS18C
20" HCS20C **NEW!**



CRASH-RIDE

18" HCS18CR



RIDE

20" HCS20R



BASIC CYMBAL SET

HCS1416
14" Hihat
16" Crash



BASIC CYMBAL SET

HCS1418
14" Hihat
18" Crash-Ride



COMPLETE CYMBAL SET

HCS141620
14" Hihat
16" Crash
20" Ride



MEINL ARTIST SERIES CYMBAL BAGS

These three unique cymbal bags offer the same protection and great features found in our other professional bags. They also have the added benefit of being designed by these artists to represent their individual personalities and styles. Whether it's Aaron Gillespie's "Pig" bag, which can be stuffed with cymbals up to 24" (15" in the hihat pocket), detailed artwork by Lamb Of God's graphic artist on Chris Adler's bag, or Benny Greb's clever sense of sophistication and functionality, these bags are in their own class.

Backside of Bags



Detachable Stick Bag



Benny Greb Artist Series Cymbal Bag

With two external compartments, shoulder strap, a second handle, cymbal dividers and much more, Benny's 22" bag is deluxe.

MCB22-BG



Aaron Gillespie Artist Series Combo Bag

This all-in-one '3 Pigs' combo concept: 24" cymbal bag, 15" external cymbal pocket and removable stick bag comes complete with internal cymbal dividers and strap.

MCB24/MSB-AG



Chris Adler Artist Series Cymbal Bag

Chris Adler's 24" bag includes a 15" external compartment for hihats and splashes, cymbal dividers, a shoulder strap and a very cool look.

MCB24-CA

CYMBAL BAGS



Gig Cymbal Bag

Ideal for casual gigs, this bag has an easy-grip handle and holds cymbals up to 22".

MSTCB22



Pro Cymbal Bags

Ideal for gigging and touring, this bag has an external 15" compartment for splashes and hihat, cymbal dividers and a shoulder strap.

MCB22 up to 22"

MCB24 up to 24"



Designer Cymbal Bag

This bag protects cymbals up to 22", and with a 15" external compartment it also has space for hihat and splashes.

MCB22-JB

Detachable Stick Bag



Pro Cymbal Backpack

Free up your hands! This backpack design puts our 22" Professional Cymbal Bag (w/added glow-in-the dark logo for dark stages) on your back.

MCB22-BP



Combo Bag

This 2-in-1 design consists of a 22" cymbal bag with a zip-off stick bag. Unzip that bag at the gig and you're all set to play.

MCB22/MSB



Symphonic Cymbal Bag

An extra-deep design maximizes capacity so this is great for bigger set-ups.

This 22" bag features two roomy external compartments.

MCB22-SY

CYMBAL CASES, DRUMMER GLOVES



Cymbal Cases Interior

Cushioned Contact Points

Bolted Center Rod

Pro Cymbal Case Trolley

A retractable handle and heavy-duty wheels and a let you pull your cymbals with ease instead of lifting and carrying them.

MCC22-TR

Pro Cymbal Case

This 22" hard-shell case is designed for heavy-duty protection, with a through-case center bolt capable of securing approximately 9 cymbals.

MCC22



Cymbal Dividers

These soft dividers protect your cymbals against metal-on-metal damage in any bag or case.

MCD-14 2 x 14" pack

MCD-22 2 x 22" pack



Drummer Gloves

Want a better grip so you avoid stick slip and blisters? Available with or without fingers.

MDG M, L, XL

MDGFL Fingerless M, L, XL

STICK BAGS



Pro Stick Bag

With four sections for sticks and mallets plus a compartment for small tools and other drummer delights, this padded nylon bag features an external pocket, shoulder strap and hang straps.

MSB-1



NEW!

Compact Stick Bag

The smaller brother of our Pro Stick Bag offers two sections for four pairs of sticks or mallets. The slim sized bag is perfect for being on the go and saving space.

MCSB



Designer Stick Bags

Four spacious stick sections plus room for drum keys and small tools make this a very complete stick carrier.

MSB-1-JB Jawbreaker

MSB-1-C1 Camouflage



Chris Adler Artist Series Stick Bag

With four spacious stick pockets, an accessory compartment and the Lamb of God look, this is Chris Adler's choice.

MSB-1-CA



Deluxe Stick Bag

Feature-loaded with plenty of stick room, zippered clear-window pockets and two external pouches, you can carry this bag by handle or strap, and hang it on your kit with its elastic chord attachments.

MDLXSB

PRACTICE PADS

Develop speed, power and precision with MEINL rapid-rebound practice pads. Carry a 6" pocket-sized pad and work on your chops anywhere. Or put a 12" on your snare drum or lock it into a snare stand, so you can warm up at gigs without driving your band crazy. Every drummer should have at least one, two or three...



Thomas Lang Artist Series Practice Pads

MPP-6-TL 6"
MPP-12-TL 12"



Benny Greb Artist Series Masterpads

MPP-6-BG 6"
MPP-12-BG 12"

MEINL Practice Pads

MPP-6 6"
MPP-12 12"



Jawbreaker Practice Pads

MPP-6-JB 6"
MPP-12-JB 12"



MEINL 4" Kneepad

Develop speed, power and precision - anytime and anywhere - with the new MEINL 4" Kneepad. With a compact size and light weight, it comfortably sits on your knee and can be secured with the adjustable strap. It's the perfect way for drummers to practice on the go!

MKPP-4



Adjustable strap to secure in place

DRUM RUGS

The MEINL Drum Rug is the ultimate for preventing drum creep. With its no-slip rubber bottom, tightly woven fabric top and great choice of graphics giving your set-up a more personalized vibe, it lets you sink your bass drum spurs and feel secure. And when the gig is over, roll it up, put it in its very own bag and away you go. 160cm (5.25') x 200cm (6.50')



**Oriental
MDR-OR**



**Jawbreaker
MDR-JB**



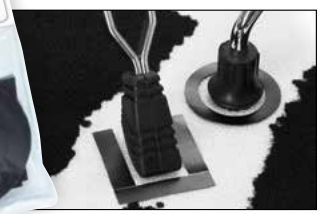
**Camouflage
MDR-C1**



**Zebra
MDR-ZB**



**Black
MDR-BK**

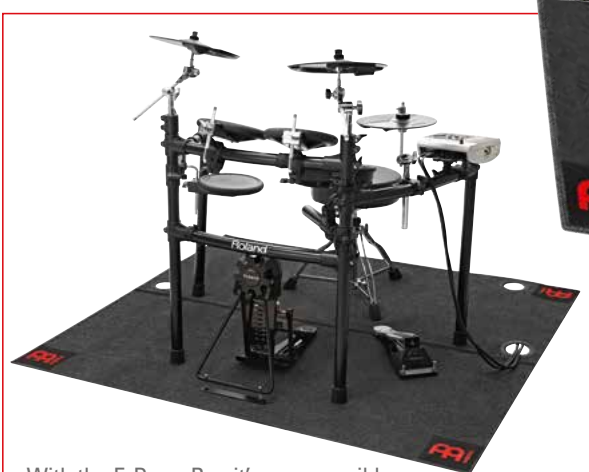


Quick-Set Markers

To position your drums and hardware in their correct places every time, simply mark those places on your drum rug with Quick-Set Markers hook 'n' loop strips and circles.

60 strips for hardware
10 circles for drums

MQSM



With the E-Drum Rug it's now possible to manage cables, plus ensure the rest of your kit and its pedals are securely set in place and will not move.



E-Drum Rug

Quick-Set Markers and transportation bag included. 150cm (4.9') x 160cm (5.25')

MDR-E

DRUM GEAR



Ching Ring

Incorporate a “ching” into your backbeats by placing the MEINL Ching Ring directly on your cymbals! Ideal for hihats, these steel jingles will add a different touch to your playing by delivering a shimmering sound that will blend perfectly with your beats. Place the Ching Ring on crashes and rides as well for some truly innovative sounds.

CRING



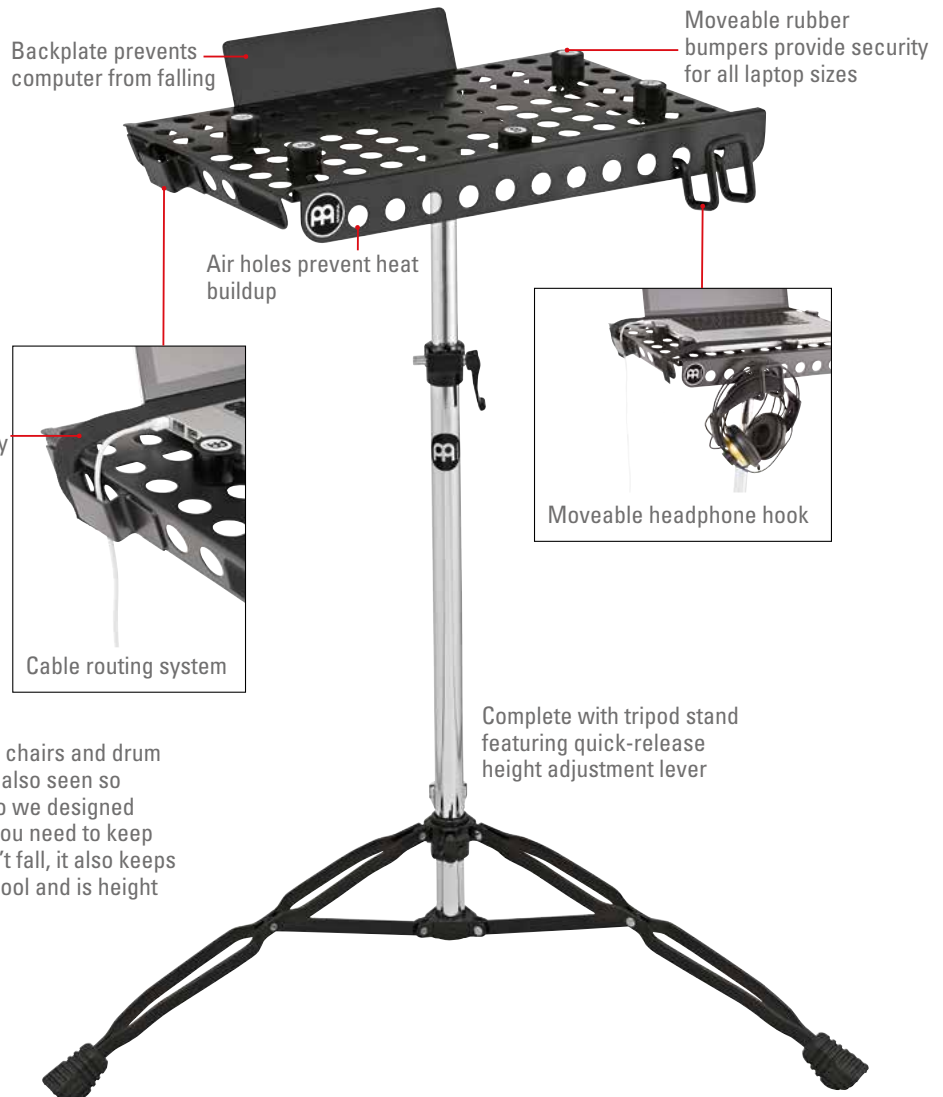
No drilling or rivets needed.



NEW! Cymbal Bacon

Simply place the chain on top of your cymbal and make it sizzle. No drilling or permanent rivets needed. Easy to use on any cymbal stand.

BACON

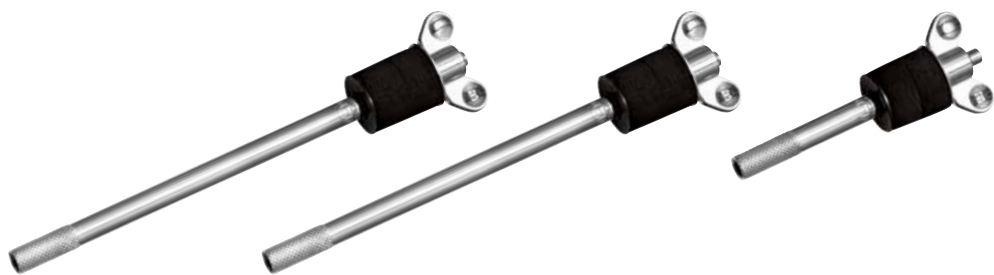


Laptop Table

We have seen so many drummers using chairs and drum cases as tables for their laptops. We've also seen so many of those laptops fall to the floor. So we designed the Laptop Table. Featuring everything you need to keep your computer strapped down so it won't fall, it also keeps cables organized, keeps the computer cool and is height adjustable.

TMLTS

DRUM GEAR



Cymbal Stackers

Double up the cymbals on any one of your stands with a short or long stacker.

- MC-CYS** 6 mm thread, long version
- MC-CYS8** 8 mm thread, long version
- MC-CYS8-S** 8 mm thread, short version

Cymbal Attachment

Add another cymbal to your set-up with this multi-clamp and boom-arm combo.

MCA

Multi Clamp, One Mount



Length is adjustable

With this length-adjustable clamp and rod you can position a timbale, cowbell, block or mountable tambourine anywhere within your set-up.

Includes straight rod

MC-1

Cymbal Holder

Instead of getting another cymbal stand, use this arm with a MEINL Multi Clamp (not included) to add a cymbal or percussion piece to your kit.

MC-CY

Attaches to any cymbal stand

Drumstick Holders

So you don't miss a beat when you drop a stick, clamp this holder to your hi-hat or cymbal stand so you can quickly grab a stick.

- MC-DSH** Black
- MC-DSH-JB** Jawbreaker



Jawbreaker Percussion Table

Great for holding onstage accessories.

MC-PT-JB 18" x 12"



Cymbal Care Kits

Keep your cymbals looking like new using these cymbal care kits.

- MCCK-MCCL** Cymbal Cleaner & Cymbal Protectant
- MCCK-MCP** Cymbal Polish & Cymbal Protectant

Both kits include **FREE** MEINL Cymbal Handling Gloves.



- MCPR** Cymbal Protectant
Seals and protects cymbal surface.
- MCCL** Cymbal Cleaner
Ideal for cleaning Brilliant and Traditional finish cymbals.
- MCP** Cymbal Polish
Cleans and polishes Brilliant finish cymbals in one spray-and-wipe procedure.



Candela

Creative and Exotic Sounds

MEINL Candela cymbals have been specially developed to meet all of the requirements for today's modern percussionists. The Candela series features light, extra thin cymbals, which reveal their full sound potential when played by hand.

PERCUSSION SPLASH

10" CA10S



PERCUSSION HIHAT

10" CA10PH



PERCUSSION CRASHES

14" CA14C

16" CA16C



TIMBALES CRASH-RIDE

18" CA18CR



PERCUSSION JINGLE BELL

14" CA14PJB





Symphonic Cymbals

HANDCRAFTED MASTERPIECES

Entirely hand hammered from premium B20 Bronze in our Turkish Cymbal Smithy, these masterpieces satisfy the highest sonic requirements of orchestral music.





Symphonic Cymbal
HANDCRAFTED

ACCESSORIES

HAND CYMBAL STAND

Strong and solid design with three double-braced legs. The two padded cymbal cradles are easily adjustable by a standard drum key. A shelf is added between the two cymbal cradles for different drum accessories.

TMHCS



SUSPENDED CYMBAL STAND

The MEINL Suspended Cymbal Stand is specifically engineered to support the cymbal as it swings freely in all directions, in order to produce its maximum sound.

Designed to hold cymbals up to 24" in diameter. A cymbal stacker can be attached on top of the gooseneck for an additional cymbal.

TMSCS



LEATHER HANDLES

Made from the finest leather to satisfy the highest demands. Perfect grabbing a hold of quickly and recommended for orchestral applications.

BR1 (pair)



SYMPHONIC CYMBALS

THIN

- 16" SY-16T
- 18" SY-18T
- 20" SY-20T
- 22" SY-22T



MEDIUM

- 16" SY-16M
- 18" SY-18M
- 20" SY-20M
- 22" SY-22M



MEDIUM HEAVY

- 19" SY-19MH



HEAVY

- 16" SY-16H
- 18" SY-18H
- 20" SY-20H
- 22" SY-22H



EXTRA HEAVY

- 20" SY-20EH
- 22" SY-22EH



SYMPHONIC SUSPENDED CYMBALS

SUSPENDED

- 14" SY-14SUS
- 16" SY-16SUS
- 17" SY-17SUS
- 18" SY-18SUS
- 20" SY-20SUS
- 22" SY-22SUS





MARCHING CYMBALS

- PROFESSIONAL RANGE -
B12 AND B10 BRONZE

are used for the professional marching range. These professional sounding cymbal pairs are tonally matched.

- STUDENT RANGE -
B8 BRONZE AND BRASS

is used for the student marching range. They are pressed into shape, are tonally matched and are the perfect choice for the ambitious beginner.



LEATHER STRAPS

PROFESSIONAL

Made from the finest leather for the ultimate in comfort. The strap has a soft surface and the pad provides excellent protection for the hands.



BR5 (pair)

STANDARD

Standard cymbal strap made from leather. It comes with a pad, which provides excellent protection for the hands.



BR3 (pair)

MARCHING

Specially designed marching leather strap made out of the finest thin leather with extra length in order to easily hold the cymbals in the traditional marching grip.



BR2 (pair)

PROFESSIONAL RANGE

B12

- 16" MA-B12-16M
- 18" MA-B12-18M
- 20" MA-B12-20M



B10

- 16" MA-B10-16M
- 18" MA-B10-18M
- 20" MA-B10-20M



ARENA

- 16" MA-AR-16
- 18" MA-AR-18



STUDENT RANGE

BRONZE

- 14" MA-B0-14M
- 16" MA-B0-16M
- 18" MA-B0-18M **NEW!**



BRASS

- 13" MA-BR-13M
- 14" MA-BR-14M
- 16" MA-BR-16M
- 18" MA-BR-18M **NEW!**





CYM-CATALOG16



8 40553 01734 2