

Cymbal and Sound Guide 2013



# OBSSESSED



# WHAT'S YOUR SOUND?



MODERN BRIGHT

Bright, explosive tone and wide dynamic range – at all volumes

14



MODERN DARK

Dark, tonally complex cymbals that cut – for modern musical styles

18



VINTAGE BRIGHT

Bright, explosive and tough – for intense, high-volume performances

22



VINTAGE DARK

Traditional hand-hammered cymbals offering rich, warm tone that blends

26



MASTERPIECE

Musically rich and complex, for hot, dark authentic tone

30



POWERFUL

Dynamic, bright musical sounds designed for RUSH drummer Neil Peart

32



SMART

Professional level B20 cast cymbals – at a smart price!

34



FOCUSED CUT

Focused B8 Bronze in brilliant finish, for those who play with speed, power, aggression

36



BRIGHT

Bright B8 Sounds – for drummers getting into their first set of Bronze cymbals

38



THE BEST BRASS

Pure SABIAN Brass Cymbals – because where you start matters

40



THE BEST VALUE

Factory refreshed B20 bronze cymbals

41

OBSSESSED	4
CYMBAL VOTE	10
HOOP CRASHER	12
BAND & ORCHESTRAL	42
GONGS, PERCUSSION & ACCESSORIES	45

On the cover: Billy Cobham, Neil Peart  
Back cover: Tomas Haake, Jojo Mayer

## FINISH AVAILABILITY:

AA, AAX, HH, HHX, Xs20, Artisan, Paragon: Natural and Brilliant finish, unless otherwise indicated. Part #'s shown are for Natural finish. For Brilliant, simply add 'B' to the Part #, except for HHX and Paragon. For HHX and Paragon, please replace the 'N' in Part # with 'B'. B8, SBr: Natural finish only. B8 Pro: Brilliant finish only.

## SONICALLY MATCHED:

All SABIAN cymbal pairs and sets are 'Sonically Matched' in the SABIAN Vault for optimum performance compatibility.

## FINISH:

- N = NATURAL
- B = BRILLIANT
- NB = NATURAL / BRILLIANT
- R = RAW

- NEW = NEW MODEL
- ★ = BEST SELLER

## WEIGHT:

- XT = EXTRA THIN
- T = THIN
- L = LIGHT
- MT = MEDIUM THIN
- ML = MEDIUM LIGHT
- M = MEDIUM
- MH = MEDIUM HEAVY
- H = HEAVY
- XH = EXTRA HEAVY

## VAULT CUSTOM SHOP

If you're looking for specific sound and performance properties but don't know how to get there, we can help. If you know exactly what you want to create, we can build it. With over 30 years of experience creating the world's most innovative cymbal models for the world's most creative players, we're ready to help you achieve the sounds you're looking for!

- All cymbal sizes from 6" to 28"
  - B20 Cast models only
  - 2-Year Warranty
- A Vault Custom Cymbal Specialist will be assigned to work with you throughout the entire process – from design through shipping – to ensure you get the exact model you're looking for.

1 800-817-2242  
CustomerService@Sabian.com  
www.sabian.com/customshop

## SABIAN ONLINE:

Visit [sabian.com](http://sabian.com) for all you need to know about SABIAN cymbals, artists, news and events.

Follow SABIAN on **Facebook** and **Twitter** for up-to-the-minute and behind-the-scenes updates on artists, concerts, products and more:  
[www.facebook.com/SABIANCymbals](http://www.facebook.com/SABIANCymbals) and [www.twitter.com/SABIAN\\_Vault](http://www.twitter.com/SABIAN_Vault).

Visit the SABIAN channel on **YouTube** for a comprehensive library of SABIAN video, including product videos, series comparison videos, SABIAN Factory Tour and SABIAN artists on tour.  
[www.youtube.com/sabianexperience](http://www.youtube.com/sabianexperience)  
[www.youtube.com/sabianvault](http://www.youtube.com/sabianvault)

## WARRANTY PROTECTION:

North America: SABIAN B8 and B20 Bronze cymbals are protected by a 2-Year Warranty. SBr Brass cymbals are protected by a 1-Year Warranty. For warranty information outside of North America, please contact your authorized SABIAN dealer.

## SIZZLES:

Sizzle rivets increase the fullness and sustain of any cymbal. To order 'sizzles' installed on any model at no extra charge add 'S' to the catalog number (example 22060S).



Why are so many drummers Obsessed with SABIAN? We believe it's because SABIAN is Obsessed with cymbals. For the past 30 years, our people have dedicated themselves to crafting the finest instruments in the world. The result is a dazzling selection of cymbals and sounds, built from the most precise metal alloys.

A SOUND  
OBSESSION



# OBSSESSED

Over the years, you've heard us use phrases like "Because Sound Matters" and "What's Your Sound?" These are much more than taglines; they're our religion – the value at our very core. Join us in celebrating the hard-working artisans – past and present – who have made the art of cymbal-making their Obsession.



Over the past year, we've had the privilege of sitting down with the finest drummers in the world to listen as they described how integral SABIAN cymbals have become to their sound. We've been struck by how truly Obsessed they are with cymbals – and how each of them has one special cymbal they wouldn't go onstage without.

A SOUND  
OBSESSION



# OBSESSED



**REX HARDY**  
18" HHX Evolution  
O-Zone Crash



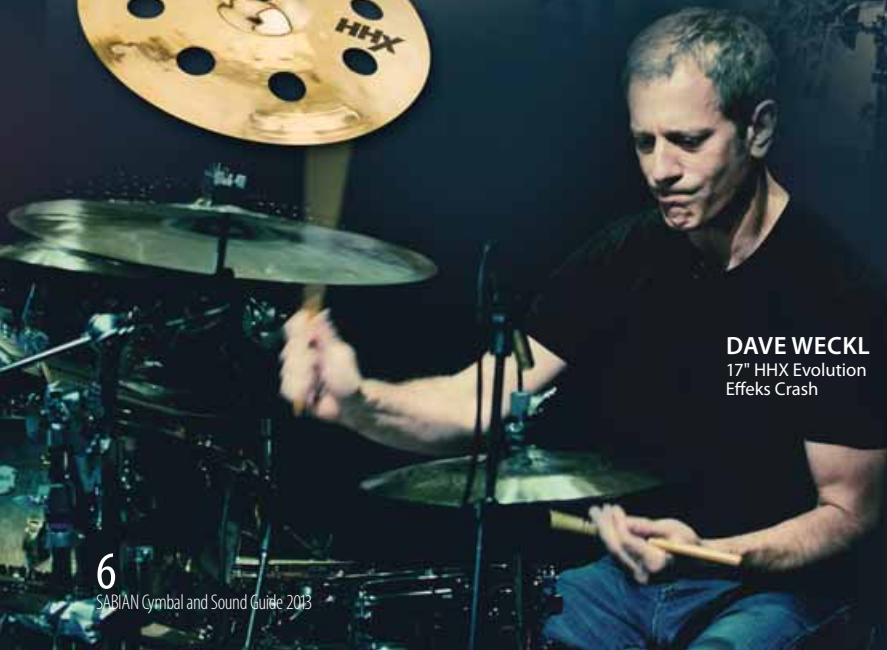
**JACK DEJOHNETTE**  
21" HHX 3-Point Ride



**TOMAS HAAKE**  
21" AAX X-Treme Chinese



**JOJO MAYER**  
22" AAX Omni



**DAVE WECKL**  
17" HHX Evolution  
Effeks Crash



**MIKE PORTNOY**  
HH Low Max Stax





During this process, we've learned more about what drives each of these special artists, both musically and personally. Find out what excites each of them and which cymbals inspire them to create magic at [www.sabian.com/obsessed](http://www.sabian.com/obsessed).

A SOUND  
OBSESSION



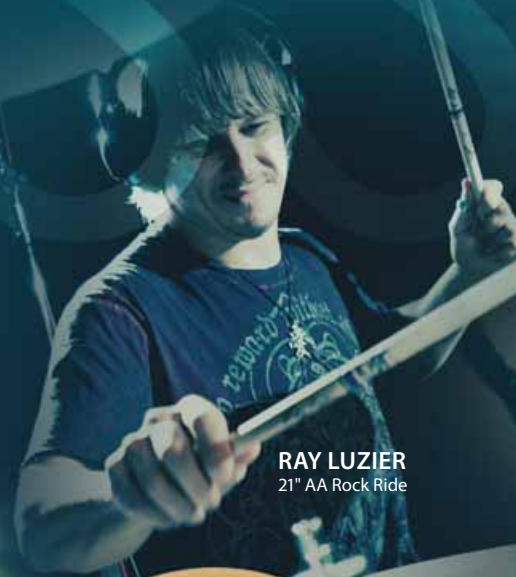
# OBSSESSED



**NEIL PEART**  
22" Paragon Ride



**BILLY COBHAM**  
20" Artisan Light Ride



**RAY LUZIER**  
21" AA Rock Ride



**BLAKE RICHARDSON**  
21" AA Holy China



**KARL BRAZIL**  
15" Artisan Hats



**TIM YEUNG**  
18" B8 Pro Chinese







## CYMBAL VOTE

# WINNERS

These four cymbals are the 2013 winners as selected by you. We thank everyone around the world who listened, voted and decided!

### AAX FREQ CRASH

A SABIAN-exclusive dual-lathing process results in a unique, intensely-cutting cymbal that delivers a quick burst of hi-frequency tone, then fills the stage with huge, open sound. Time to get your Freq on! Available in 18" size.



### AAX AIR SPLASH

A punchy and cutting Splash that really opens up and breathes! The raw bell design combined with AAX hammering and lathing results in a Splash cymbal with biting tone and plenty of substance and depth. 8" and 10" sizes.



The latest model in a great line of SABIAN wash rides – but bigger and extremely light for its size. The small bell design helps control the sound when you need a ride, or just bash away on it for that huge, stage-eating sound. Big is back! 21" and 24" sizes.

### AA BASH RIDE



### AAX X-PLOSION HATS

Incorporating award-winning SABIAN X-Plosion Crash design, this medium top – medium-heavy bottom pairing provides incredible foot. And the high profile bell and sustain-enhancing process means you can play them open and loud – or tight and articulate. 14" and 16" sizes.





New for 2013

# The Jojo Mayer Hoop Crasher

Designed by Jojo Mayer, this dual-ring effects device offers incredible versatility and a massive palette of sound. Made from premium B20 Bronze hi-hats, the top flotation ring is punched with 32 holes for lightness and lift, while the heavier bottom ring is designed with X-Celerator Air-Wave lip to minimize contact with the snare head. So you can use it without changing the sound of your snare, allowing you to dial in as much or as little effect as you want. The sound possibilities are endless.

Don't be fooled by imitators. There's nothing else like it.

## PRODUCT FEATURES

- 32 holes for lightness and lift
- Minimal contact area with snare head means no airlock
- Ability to dial in desired sustain or effects level
- Play rings free or attached for even more sound possibilities



*In my ongoing search for snare drum sounds that assimilate modern electronic production sounds, I've been modifying my snare drum by means of acoustic embellishments, rather than electronic triggering. To achieve these effects, I've tried many things on my snare drums over the years: broken cymbals, pieces of metal, even ashtrays. Although to a certain extent I've had some good results along the way, I was never able to achieve anything reliable enough to give me a consistent sound each time I played. So after many years of research and testing, Mark Love from SABIAN and I developed this device we named the Hoop Crasher.*

Jojo Mayer

*We've been working on this very unique device for some time. Jojo has been playing Hoop Crasher prototypes for years, and we're constantly asked by drummers when they will be available for purchase. So we're very happy to announce this launch and very proud to have worked together with Jojo on yet another innovative instrument.*

Mark Love

Part # | Size | Weight | Finish

### Hoop Crasher

HC-14 14" L/M N

To learn more about the Jojo Mayer Hoop Crasher, visit [www.sabian.com](http://www.sabian.com)



# AAX

AAX Omni

AAX changed everything! Before AAX, most cymbals were manufactured using processes that had been around for centuries. AAX was the first B20 Bronze cymbal designed and manufactured using completely modern lathing and hammering techniques. The result? Increased brightness, cut and musicality – for the widest dynamic range ever achieved. And suddenly, the bright, explosive tone of AA cymbals was available even at low volume.

## Modern Bright



MARK SCHULMAN



DANIEL ADAIR



GEORGE KOLLIAS



GENE HOGLAN

Bright, explosive tone and wide dynamic range – at all volumes



AAX X-Pllosion Hats

### OUR DESIGN

- Hand-guided, high-pressure hammering
- Pinpoint lathing
- High-profile shape

### YOUR PERFORMANCE

- Instant, bright responses
- Increased sensitivity and wide dynamic range, even at low volume
- Cutting, high-pitched tone

Part # | Size | Weight | Finish

#### > RIDES

##### Studio Ride

MT N B

Soft feel and full response, with a readily-activated wash of shimmering tone complementing overall sound.

22010X 20"

##### Stage Ride

M N B

The ultimate balance of bright stick definition, pure tone, and a controllable amount of wash make this a highly effective and versatile model.

22012X 20"

22112X 21"

##### Stadium Ride

MH N B

With medium-heavy weight and solid bell, the Stadium Ride is ideal for projection, stick definition and warm spread, bridging the gap nicely between the AAX Stage and Metal Rides.

22013X 20"

##### Metal Ride

H N B

Extremely bright, dry and well defined ride and bell responses. The ultimate for getting your sticking heard.

22014X 20"

22214X 22"

Part # | Size | Weight | Finish

#### > CRASHES

##### Memphis Ride

ML R

With single-line lathing cut into its raw surface, this versatile model responds with a dry stick sound, controlled wash, a raw and cutting bell, and a crashable edge.

221101X 21"

##### Raw Bell Dry Ride

MH N B

A ride for every style, this RBDR delivers bright, crystal clear sticking at all volumes – low to loud – and solid bright punch when played on the raw, unlathed bell.

22172X 21"

##### V-Ride

M N B

Maximizing the cutting potential of the silver in its bronze alloy, this raw-bottom model sounds bright and focused.

22012XBV 20"

#### > OMNI

##### Omni

M/XT N

Designed with Jojo Mayer, OMNI is a revolutionary new cymbal design – never has so much versatility existed in just one cymbal.

2180MX 18"

2220MX 22"

Part # | Size | Weight | Finish

#### > CRASHES

##### Aero Crash

MT N B

Combining an AAX X-Pllosion raw bell design with an innovative hole pattern, the Aero Crash provides a perfect balance of frequency and cut.

216XAC 16"

218XAC 18"

220XAC 20"

##### Studio Crash

T N B

Thin design and small bell for quick response, tonally full, glassy, and shimmering accents.

21406X 14"

21506X 15"

21606X 16"

21706X 17"

21806X 18"

##### Stage Crash

MT N B

Explosive, full-response sound is rich with bright, high-end tone, for increased cut.

21608X 16"

21708X 17"

21808X 18"

22008X 20"

##### Metal Crash

M-MH N B

Solid response is fast and bright, for maximum penetrating power in even the loudest music.

21609X 16"

21809X 18"





**AAX Aero Crash**  
Raw Bell design and innovative hole pattern add up to a Crash that delivers the perfect balance of frequency and cut.



VIRGIL DONATI



**AAX Raw Bell Dry Ride**  
Bright, crystal-clear sticking at all volumes and solid, bright punch when played on the raw, unlathed bell – this is truly a ride for all styles.



**AAX V-Crash**  
With clean, glassy tone at low volume and the ability to blow through the loudest band with high-pitched cut, this is a very effective modern-sounding crash.

Part # | Size | Weight | Finish

**El Sabor Picante Hand Crash**

M/XT N

Designed for percussionists to slap by hand, this thin-edged, semi-lathed model explodes with bright, dirt-edged sound. (Medium Center/Extra-Thin Edge)

- 21660XH 16"
- 21860XH 18"

**Dark Crash**

T N B

Dramatically dark and dry, this moody cymbal creates a dark-edged tone.

- 21468X 14"
- 21668X 16"
- 21768X 17"
- 21868X 18"
- 21968X 19"

**X-Plosion Crash**

MT B

Bursting with bright, explosive attack, this model delivers penetrating definition with total presence and power.

- 21487XB 14"
- 21587XB 15"
- 21687XB 16" \*
- 21787XB 17"
- 21887XB 18" \*
- 21987XB 19"
- 22087XB 20"



AAX Freq Crash

Part # | Size | Weight | Finish

**X-Plosion Fast Crash**

XT B

Super-fast and with a full, explosive response, the X-Plosion Fast Crash redefines the power potential for thinner cymbals with even faster, punchier accents at all volumes.

- 21485XB 14"
- 21585XB 15"
- 21685XB 16"
- 21785XB 17"
- 21885XB 18"
- 21985XB 19"

**O-Zone Crash**

T N B

With a bright, shimmering sound and a multi-holed design increasing the agitation in its tone, this O-Zone delivers bite with a touch of anger.

- 21600X 16" \*
- 21800X 18"

**Saturation Crash**

MT N

Designed for Virgil Donati. Bright, powerful response boosted by a wide range of frequencies, saturate the sound with color.

- 21606XNVD 16"
- 21806XNVD 18"

**V-Crash**

T B

The bright sound of this cymbal – powered by the silver in its B20 Bronze – slices through the music around it.

- 21606XBV 16" \*
- 21706XBV 17"
- 21806XBV 18"
- 21906XBV 19"
- 22006XBV 20"

Part # | Size | Weight | Finish

**Freq Crash**

MT N

Exclusive dual lathing process results in this unique, intensely-cutting cymbal that fills the stage with huge, open sound. Time to get your Freq on!

- NEW 218XFC 18"

**> HI-HATS**

**Studio Hats**

MT/M N B

Ideal for lower volumes. Warm and responsive, with soft, bright tones and full, open sound.

- 21401X 14"

**Stage Hats**

M/H N B

Highly responsive, with bright, clean sounds that cut clearly at any volume.

- 21402X 14" \*

**Metal Hats**

H/XH N B

Tight and dry when closed, when opened this pairing becomes very metallic and aggressive.

- 21403X 14"

**Fusion Hats**

MH/XH N B

Fast, controlled, and cutting. Pairing of AAX top and heavy HH vented bottom is powerful.

- 21350X 13"

**X-Celerator Hats**

M/H N B

Crisp and accurate with 'Air Wave' bottom eliminating air lock for maximum clarity.

- 21302XL 13" \*
- 21402XL 14" \*

Part # | Size | Weight | Finish

**X-Plosion Hats**

M/MH B

Incorporating award-winning X-Plosion Crash design, this medium top–medium-heavy bottom pairing provides incredible foot. High profile bell and sustain-enhancing process make them open and loud – or tight and articulate. Available in a 16" set – big Hats rock!

- NEW 2140287XB 14"
- NEW 2160287XB 16"

**V-Hats**

M/H B

A crisp pair of hats with solid feel, quick stick response, and the sound of silver in its alloy that slices through the music.

- 21402XBV 14"

**> SPLASHES**

**Max Splash**

XT N B

Designed for Mike Portnoy. Odd-size models with glassy, cutting penetration for fast and punchy accenting.

- 20705XMP 7"
- 20905XMP 9"
- 21105XMP 11"

**Splash**

XT N B

Extremely fast and very bright, with strong penetrating cut.

- 20605X 6" \*
- 20805X 8" \*
- 21005X 10" \*
- 21205X 12"



AAX Air Splash

Part # | Size | Weight | Finish

**Air Splash**

XT N B

A punchy, cutting splash that really opens up and breathes. A raw bell design with AAX hammering and lathing results in a biting splash with plenty of substance and depth.

- NEW 20805XA 8"
- NEW 21005XA 10" \*

**O-Zone Splash**

XT N

With its multi-hole design, this small model sounds bright and airy, with a degree of agitation.

- 21000X 10"
- 21200X 12"

**X-Plosion Splash**

XT B

Super-fast, bright and cutting, this odd-sized power splash delivers with the right degree of speed and sustain to ensure it cuts through in any style of music.

- 21187XB 11"

**> CHINESE**

**Mini Chinese**

T N B

Aggressive accenting power in the form of cutting, raw-edged attack and quick decay rate.

- 21216X 12"
- 21416X 14"

**Chinese**

T N B

Bright, biting response is big, trashy, and brash.

- 21616X 16"
- 21816X 18" \*
- 22016X 20"

Part # | Size | Weight | Finish

**X-Treme Chinese**

T N B

Extremely fast, with a raw and ripping sound that cuts with oriental punch and focused power.

- 21586X 15"
- 21786X 17"
- 21986X 19" \*

**> SETS**

**AAX Stage Performance Set**

N B

25005X 14" Stage Hats, 16" Stage Crash, 20" Stage Ride \*

**AAX Effects Pack**

N B

25005XE 10" Splash, 18" Chinese, FREE Towel

**AAX Praise & Worship Pack**

N B

PW1 11" AAX X-Plosion Splash, 13" AAX Stage Hats, 16" AAX X-Plosion Fast Crash, 21" AAX Raw Bell Dry Ride, 18" AAX X-Plosion Fast Crash \*

**Max Splash Set**

N B

25002XMP 7", 9", 11" Max Splashes

**Club Mix**

B

XA5003 14" Xs20 Medium Hats, 16" AAX X-Plosion Crash, 18" AAX X-Plosion Crash, 20" Xs20 Medium Ride \*

**Arena Mix**

B

AH5003 14" AAX X-Celerator Hats, 16" HHX X-Plosion Crash, 18" AAX X-Plosion Crash, 20" AAX Stage Ride



# HHX

Until HHX, dark cymbals simply did not cut. With HHX, SABIAN changed all of that. Using an innovative combination of high-profile shape, large raw bell and jumbo-sized hammering, they ensured that the dark, tonally complex sound of HHX cuts in any situation. Essentially, they took the warm, dark, complex tone of HH cymbals – and made it cut for modern musical settings.

# Modern Dark



HHX 3-Point Ride



DANIEL ERLANDSSON



MARTIN AXENROT



CORA COLEMAN-DUNHAM



CHRIS JOHNSON

Dark, tonally complex cymbals that cut – for modern musical styles

CYMBAL VOTE



HHX Zen China

## OUR DESIGN

- Jumbo sized hammering
- Pinpoint lathing
- High-profile shape
- Large, raw bell

## YOUR PERFORMANCE

- Deep, dark, complex tone
- Increased sensitivity and wide dynamic range at *any* volume
- Explosive, cutting sound
- Boosted volume and cut

| Part # | Size | Weight | Finish

### > RIDES

#### Stage Ride

M N B

Dark, crisp stroke responses, controlled spread, with raw, hammered bell.

12012XN 20"

#### Groove Ride

M N B

A funky blend of stroke and tone in a cymbal with shimmering sound and feel.

12189XN 21" \*

#### Evolution Ride

MT-T B

Crisp attack and warm undertones combine in a shimmering ride with crash capability.

12012XEB 20" \*

#### Manhattan Jazz Ride

MT N B

A subtle but shimmering blend of dark tone in this highly responsive model lets you dig in.

12085XN 20"

12285XN 22"

#### Raw Bell Dry Ride

MH N B

A classic SABIAN design, the RBDR puts out crisp, hot sticking wherever your stick lands, from bow to unlathed bell. A ride for all styles.

12172XN 21"

| Part # | Size | Weight | Finish

### Legacy Ride

MT N

This light, crashable model delivers stick definition, wash and darkness with an unlathed control band, limiting spread.

12010XLN 20"

12110XLN 21"

### Legacy Heavy Ride

M N

Stick articulation remains semi-dry and crisp over a cushion of warm tone.

12233XLN 22"

### 3-Point Ride

MT N B

Based on an idea from jazz giant Jack DeJohnette, offers dark, smokey tone with varying sound nuances across 3 distinct playing surfaces.

12118XNJD 21"

### Fierce Ride

MT R

Designed for Jojo Mayer. A complex blend of raw tone and semi-dry 'tah' stick sound combines for a fierce yet controllable ride.

12112XNJM 21"

| Part # | Size | Weight | Finish

### > CRASHES

#### Studio Crash

T N B

Thin design for fast and full accents loaded with a bright tone that shimmers.

11406XN 14"

11606XN 16"

11806XN 18"

#### Stage Crash

M N B

Medium weight boosts volume for solid attack and full-bodied, warm, penetrating response.

11608XN 16"

11808XN 18"

#### X-Treme Crash

T N B

A blend of dark and funky thin crash explosion with hot, shimmering attack.

11692XN 16"

11792XN 17"

11892XN 18"

11992XN 19"



HHX Fierce Ride





**HHX X-Plosion Crash**  
Bursting with tuneful, explosive attack, X-Plosion Crashes deliver simmering, dark tone boosted with Modern Dark projection.

**HHX Evolution Ride**  
Combining crisp attack with warm undertones, this is a glassy, shimmering ride with excellent crash capability.



DAVE WECKL



**HHX Click Hats**  
Click Hats excel in control and articulation for a distinctive electronic quality – ideal for modern electronic dance music.

Part # | Size | Weight | Finish

**X-Plosion Crash**

MT B

Simmering, dark tones boosted by explosive power deliver a toneful explosion.

- 11487XB 14"
- 11587XB 15"
- 11687XB 16"
- 11787XB 17"
- 11887XB 18"
- 11987XB 19"
- 12087XB 20"

**Legacy Crash**

T H

With its dark tone, this highly responsive model can play loudly but is always musical.

- 11706XLN 17"
- 11806XLN 18"

**Evolution Effeks Crash**

XT B

Simply touch to activate this hand- or stick-playable extra-thin model with the finger-friendly, down-turned edge.

- 11711XEB 17"

**Evolution Crash**

T B

The warm, explosive response is fast and shimmering, for increased cut and projection.

- 11606XEB 16" \*
- 11706XEB 17"
- 11806XEB 18" \*

Part # | Size | Weight | Finish

**Evolution O-Zone Crash**

T B

Perforated by 2" holes, this innovative crash delivers raw, dark and dirty bite.

- 11600XEB 16" \*
- 11800XEB 18" \*

**Manhattan Jazz Crash**

T N B

An explosive shot of simmering tone, with punchy crash/ride potential. Raw and dirty.

- 11891XN 18"

**Fierce Crash**

T N B

Designed for JoJo Mayer. Thin crash speed and explosiveness with raw aggressiveness and dirty tone.

- 11890XNUM 18"
- 11990XNUM 19"

> **HI-HATS**

**Fusion Hats**

M/H N B

High-definition sticking, crisp, clear pedal "chick", and cutting volume in both closed and open positions.

- 11450XN 14"

Part # | Size | Weight | Finish

**Stage Hats**

M/H N B

Bright, crisp response is highly versatile, with clean sticking when closed, and a solid wash of sound when open.

- 11402XN 14"

**Click Hats**

M/MH N B

A combination of AA high-profile shape, HH and HHX hammering, fully lathed bottoms and partially lathed tops results in plenty of control and articulation – giving HHX Click Hats a distinct electronic click-track quality.

- 11402XNC 14"

**Groove Hats**

M/H N B

Funky feel and simmering blend of retro tone and crisp definition is ideal for grooving.

- 11489XN 14" \*
- 11589XN 15"

**Evolution Hats**

M/H B

With its touch-sensitive response, this pairing delivers a glassy, shimmering response, and projects even the busiest sticking with crisp clarity.

- 11302XEB 13"
- 11402XEB 14" \*

Part # | Size | Weight | Finish

**Legacy Hats**

L/H N

Very responsive pairing delivers clean, crisp stick articulation and solid pedal "chick", with warm, tonal color.

- 11402XLN 14"

**X-Celerator Hats**

M/H N B

With an 'Air Wave' bottom eliminating airlock and boosting articulation and crispness, this pairing delivers simmering sounds at all volumes.

- 11402XL 14"

**Fierce Hats**

M/H R

Designed for Jojo Mayer. This raw-surfaced pairing responds with tight, dark, semi-dry sounds and clear projection.

- 11302XNUM 13"

> **SPLASHES**

**Splash**

XT N B

Fast, biting, and colorful with a punchy attack and rapid decay rate for increased bite.

- 11005XN 10" \*
- 11205XN 12"

Part # | Size | Weight | Finish

**Evolution Splash**

XT B

Highly responsive model has bright, fast and penetrating projection.

- 10705XEB 7"
- 11005XEB 10" \*
- 11205XEB 12"

> **CHINESE**

**Chinese**

T N B

A fiery combination of tonal heat and raw aggression, for biting attack with a furiously fast and funky feel.

- 11816XN 18" \*
- 12016XN 20"

**Zen China**

T N B

A unique inverted Chinese design makes this model easier to play when mounted flat. Traditional hand hammering is used, followed by additional HHX hammering to flatten out the playing surface next to the bell.

- 12016XNZ 20"

**Evolution Mini Chinese**

T B

Small, funky-sounding with dark-edged bite. Ideal on its own or stacked.

- 11416XEB 14" \*

Part # | Size | Weight | Finish

> **SETS**

**HHX Performance Set**

N B

- 15005XN \*
- 14" Stage Hats, 16" Stage Crash, 20" Stage Ride

**HHX Evolution Performance Set**

B

- 15005XEB \*
- 14" Evolution Hats, 16" Evolution Crash, 20" Evolution Ride

**HHX Effects Pack**

N B

- 15005EXN \*
- 10" Splash, 18" Chinese, FREE Towel

**HHX Praise & Worship Pack**

N B

- PW2 \*
- 12" HH Splash, 13" HHX Fusion Hats, 16" HHX Evolution Crash, 21" HH Raw Bell Dry Ride, 18" HHX Evolution Crash

**Arena Mix**

B

- AH5003 \*
- 14" AAX X-Celerator Hats, 16" HHX X-Plosion Crash, 18" AAX X-Plosion Crash, 20" AAX Stage Ride

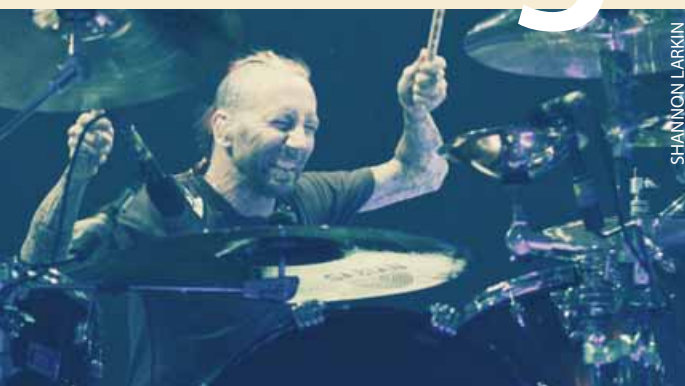


# AA

AA Chinese

AA cymbals use an automated hammering process to create stronger, louder cymbal models. The combination of high-profile shape and small-peen, concentric hammering pattern raises the pitch for bright, explosive tone. And traditional lathing increases durability and toughness for more intense, high-volume performances. That's why AA models are ideal in classic rock settings.

# Vintage Bright



Bright, explosive and tough – for intense, high-volume performances



OUR DESIGN	YOUR PERFORMANCE
Automated, small-peen hammering	Increased volume and cut
Traditional lathing	Durability and toughness
High-profile shape	Raised pitch and increased brightness

| Part # | Size | Weight | Finish

### > RIDES

#### Medium Ride

**M N B**  
Highly versatile. Balances crisp stroke definition with a smooth blend of bright tones and a clean bell.

22014	20"
22012	20"

#### Rock Ride

**H N B**  
Big, bright bell and solid, full-bodied sticking add up to aggressively loud and penetrating power.

22014	20"
22114	21"

#### Raw Bell Dry Ride

**MH N B**  
Topped with a solid, raw bell, this versatile model delivers strong, dry stick articulation with a touch of tone at every volume.

22172	21"
-------	-----

| Part # | Size | Weight | Finish

#### Metal Ride

**H B**  
Bright and solid sticking combines with a pure, cutting bell to make this a powerfully loud ride.

22014MB	20"
22214MB	22"

#### Bash Ride

**T N B**  
The latest model in a great line of SABIAN wash rides – but bigger and extremely light for its size. Smaller bell design helps control the sound when you need a ride, or just bash away on it for huge, stage-eating sound.

2218C	21"
2248C	24"

| Part # | Size | Weight | Finish

#### Medium Crash

**M N B**  
Aggressive attack is full, loud, and very effective in high volume playing.

21608	16"
21808	18"

#### Rock Crash

**MH N B**  
Explosive and penetrating, high-pitched volume is the strength of this cymbal of power.

21609	16"
21809	18"
21909	19"
22009	20"

#### El Sabor Crash

**T N B**  
Fast response with solid bell for clavé. Playable by hand or stick.

21660	16"
-------	-----

#### Metal Crash

**M B**  
Punchy and direct, this crash is designed to deliver volume that cuts through the most intense bands.

21609MB	16"
21709MB	17"
21809MB	18"
21909MB	19"
22009MB	20"

### > CRASHES

#### Thin Crash

**T N B**  
Fast response, with warm, dark tone making this a very musical crash.

21606	16"
21806	18"

#### Medium-Thin Crash

**MT N B**  
Bright and tonally full, combining thin sensitivity with medium-weight power.

21607	16"
21807	18"





**AA Rock Ride**

Big, bright bell and solid, full-bodied sticking add up to an aggressively loud and penetrating ride cymbal.

**AA Holy China**

Designed with Chad Smith, this killer China cymbal is truly a monster of loudness and cut.

**AA Medium Hats**

Bright pedal "chick", crisp full-bodied sticking, and solid wash when played open, AA Medium Hats deliver Classic Bright sounds for modern players.



| Part # | Size | Weight | Finish

**> HI-HATS****Medium Hats**

M/H N B

Combines bright pedal "chick" and crisp, full-bodied sticking with solid wash when open.

21402 14" \*

**Rock Hats**

H/H N B

Powerful and penetrating, with durability to handle heavy sticking in the loudest playing.

21403 14"

**Metal Hats**

M/H B

Closed or open, this heavy pairing delivers crisp, clear sticking and high-definition volume.

21403MB 14"

| Part # | Size | Weight | Finish

**> SPLASHES****Splash**

XT N B

Immediate response is fast, bright, crisp, and cutting, with instant decay.

20805 8" \*

21005 10"

**China Splash**

XT N B

Rapid, splashy response with bright, trashy edge. Can fit atop other cymbals.

20816 8"

| Part # | Size | Weight | Finish

**El Sabor Salsa Splash**

T N B

Oversized for added power, this thin model responds with speed and brightness under hand or stick.

21360 13"

**Metal Splash**

T B

Heavier, punchier, louder than other splashes... a solid, slamming source for bold, cutting accents.

21005MB 10"

AA El Sabor Salsa Splash



| Part # | Size | Weight | Finish

**> CHINESE****Mini Chinese**

T N B

Rapid-response model is fast, dry, and cutting, for quick accents and effects. Ideal for any style.

21216 12"

21416 14"

**Chinese**

T N B

Aggressive and brash with bright, penetrating trashiness, for accenting with attack.

21616 16" \*

21816 18"

22016 20"

| Part # | Size | Weight | Finish

**Metal Chinese**

T B

Hard, direct, lethally loud and cutting Chinese designed to punch through big-volume bands.

21816MB 18"

**Holy China**

T N B

Developed with Chad Smith, Holy China is truly a monster of loudness and cut – it's the loudest cymbal SABIAN produces!

21716CS 17" \*

21916CS 19"

22116CS 21"

| Part # | Size | Weight | Finish

**> SETS****AA Performance Set**

N B

25005  
14" Medium Hats, 16" Medium Crash,  
20" Medium Ride

**AA Metal Performance Set**

N B

25005MB  
14" Metal Hats, 16" Metal Crash, 20" Metal Ride

**AA Effects Pack**

N B

25005E  
10" Splash, 18" Chinese, FREE Towel



# HH

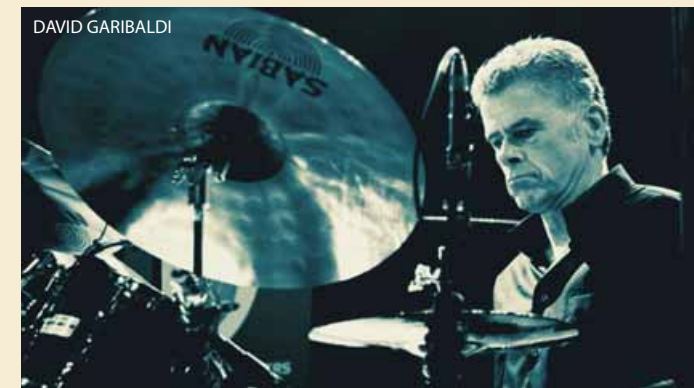
HH cymbals are traditional dark, hand hammered cymbals. Based on legendary Turkish models, we use a centuries-old manufacturing process to create cymbals with deep, dark, rich and complex tones. As a result, HH cymbal models blend smoothly into vintage musical settings like jazz, blues and R&B.

# Vintage Dark

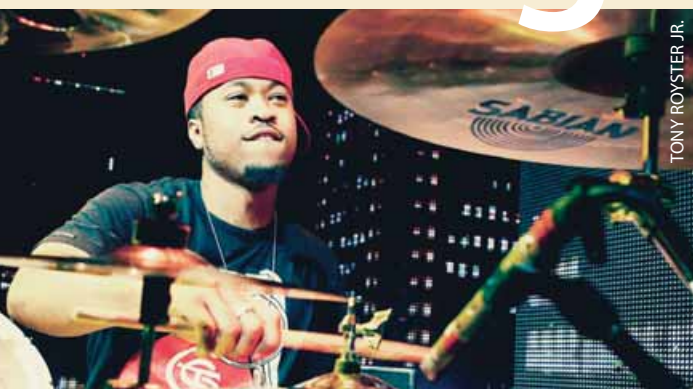
HH Alien Disc



JOSE PASILLAS



DAVID GARIBALDI



TONY ROYSTER JR.



TERRY BOZZIO

Traditional hand-hammered cymbals offering rich, warm tone that blends



HH Jam Master Ride

## OUR DESIGN

- Traditional hand hammering
- Traditional lathing
- Low profile shape

## YOUR PERFORMANCE

- Dark and complex tone
- Tonally rich, quick responses
- Low-pitched warm tone that blends

Part # | Size | Weight | Finish

### > RIDES

#### Medium Ride

M N B

A very musical ride. Smooth, warm, and woody stick response with nice bell definition.  
12012 20"

#### Leopard Ride

MH B

Heavily hammered, unlathed model delivers dark, penetrating stick response with extra-strong definition and loud bell.  
12030 20"

#### Rock Ride

H N B

Powerful high-end cut and warm tone combine with a bright bell, for a loud, penetrating ride with character.  
12249 22"

#### Crossover Ride

MT R

Versatility without compromise: Semi-dark, musical tone with ride and crash capability and total stick articulation at all times.  
12110C 21"

Part # | Size | Weight | Finish

#### Power Bell Ride

H N B

Combining a mega-size 8" raw bell with a lathed bow area, this cymbal is all about big power loaded with tone.  
12258 22"

#### Duo Ride

MT N B

Half lathed, half raw, this ride delivers a choice of hot, wet or dry responses and crash ability.  
12065 20"

#### Raw Bell Dry Ride

MH N B

High-definition sticking with the right degree of warm, funky tone. Unlathed bell cuts with maximum clarity.  
12172 21" \*

#### Vintage Ride

MT N B

With its high shape and large bell, the Vintage is big on volume and tone. Great for jazz, rock and beyond.  
12178 21"

Part # | Size | Weight | Finish

#### Jam Master Ride

M B

Designed for David Garibaldi. Pure stick articulation and warm musical tone combine in this funky, musical model.  
12212DGB 22"

#### Encore Flat Ride

MT R

No-bell design controls volume, delivers vintage dry stick definition and a hot, tonal darkness.  
12017JD 20"

#### Liquid Ride

M N B

Designed for Chester Thompson. This model balances 'ping' stick response with mid-range spread, controlled by flanged edge.  
12248CT 22"

### > CRASHES

#### Thin Crash

T N B

Full-bodied musical response is low, dark and warm, with rapid decay.  
11606 16" \*

11806 18"



**HH Crossover Ride**

Dark, musical tone with ride and crash capability, and complete stick articulation at all times – this is versatility without compromise.

**HH Thin Chinese**

Completely hand-hammered – twice – for raw, dark, biting response. A traditionally oriental sounding China cymbal.

**HH Raw Bell Dry Ride**

The perfect ride for warm, funky tone and high-def sticking – with an unlathed bell that cuts for maximum clarity.

| Part # | Size | Weight | Finish

**Medium-Thin Crash**

MT N B

Mixes power and tone for explosive response and moderate sustain.

11607 16" +  
11807 18"

**Medium Crash**

M N B

Heavier weight increases power and focus, for increasingly direct and louder responses.

11608 16"  
11808 18"

**Dark Crash**

MT N B

Dark responses are dry and moody, for fast crashing and quick accents.

11668 16"  
11868 18"

| Part # | Size | Weight | Finish

**> HI-HATS****Medium Hats**

M/H N B

Warm, full-bodied responses are clean and musical with solid stick definition.

11402 14" +

**Fusion Hats**

MH/H N B

Heavy, unlathed, air-vented bottom boosts power and crispness for increased clarity and precision.

11350 13"  
11450 14"

**Dark Hats**

MT/M N B

A pairing with the deep, dark tones, and warmth found only in traditionally hand hammered cymbals.

11473 14"

| Part # | Size | Weight | Finish

**> SPLASHES****Splash**

XT N B

Small, thin and fast, with low-pitched dark tone and its own special character.

10805 8" +  
11005 10"

**Duo Splash**

T N B

Combines hot breathiness with raw bite, for a darker, highly direct, and impact-making splashy response.

11065 10"

HH Dark Hats



| Part # | Size | Weight | Finish

**> CHINESE****Chinese**

T N B

Raw in response with dark, musical overtones. Effective for riding, accents, crashing, and effects.

11816 18" +

**Thin Chinese**

T N B

Totally hand hammered twice, for a response that is raw, dark, fast, and biting. Very oriental.

11853 18" +

**China Kang**

T N B

Micro-sized Chinese-style models respond with a raw, tight combination of chinese and splash. The sound is 'kang.'

11067 10"

HH Radia Cup Chime



| Part # | Size | Weight | Finish

**> SPECIALTIES****Radia Cup Chime**

R

Designed for Terry Bozzio. These small, pitched bells offer color to any set-up.

10759R 7"  
10859R 8"  
10959R 9"

**Alien Disc**

H N B

Designed for Will Calhoun. Spacey effect of solid bronze, pierced with sizzling rivets. A funky super-mini ride or effect.

11059CAL 10"

| Part # | Size | Weight | Finish

**> SETS****HH Performance Set**

N B

15005 +  
14" Medium Hats, 16" Medium-Thin Crash, 20" Medium Ride

**HH Effects Pack**

N B

15005E  
10" Splash, 18" Chinese, FREE Towel

**High Max Stax**

N B

15005MPH  
8" Max Stax China Kang, 8" Max Stax Splash

**Mid Max Stax**

N B

15005MPL  
10" Max Stax China Kang, 10" Max Stax Splash

**Low Max Stax**

N B

15005MPL +  
12" Max Stax China Kang, 14" Max Stax Crash



# Artisan

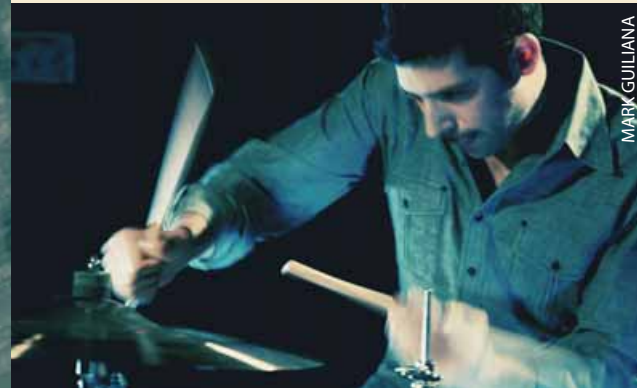
# Artisan

Artisan is the pinnacle of cymbal manufacturing. Fusing traditional high-density hand hammering with a touch of innovation, SABIAN Vault specialists have crafted a traditional "Old World" cymbal for modern times. Artisan cymbals are tonally deep, dark and rich – with plenty of volume for modern musical genres. Use them for jazz, rock, hip-hop and more.

# Masterpiece



Artisan Crash



MARK GUILIANA



STEVE FERRONE



TONY COLEMAN



JEFF 'TAIN' WATTS

Musically rich and complex, for hot, dark, authentic tone

## OUR DESIGN

High-density hand hammering

Jumbo peen dimpling

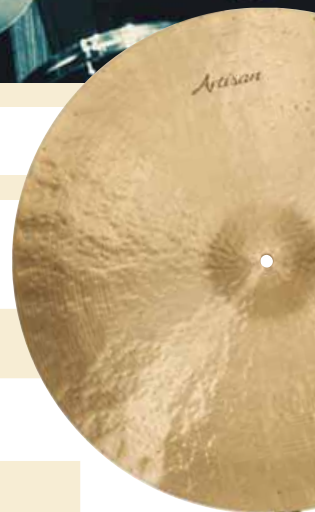
Wide blade lathing

## YOUR PERFORMANCE

Maximum tonal complexity

Increased volume

Deep, dark, rich tone



Artisan Light Ride

Part # | Size | Weight | Finish

### > RIDES

With 'high density' hand hammering, sizzling hot, dark tone, and crisp stick 'click', this ride is rich with traditional tone.

A2010	20"	L	N	B	
A2210	22"	L	N	B	
A2012	20"	M	N	B	
A2212	22"	M	N	B	+

Part # | Size | Weight | Finish

### > CRASHES

Fast, dark and dirty, the Artisan Crash 'opens up' with a musically rich, complex texture of traditional tone.

A1606	16"	T	N	B	+
A1706	17"				
A1806	18"				
A1906	19"				
A2006	20"				

Part # | Size | Weight | Finish

### > HI-HATS

Deeply dark and rich, complex tone with crisp yet soft 'tah' stick response for dynamic responses at all volumes.

A1302	13"	M/H	N	B	
A1402	14"				+
A1502	15"				

### Artisan Hats

Extremely versatile Hats that work as well for jazz and traditional R&B as they do for modern rock and hip-hop.



### Artisan Crash

Fast, dark and dirty, Artisan crashes open up with musically rich and complex traditional tone. A Thin crash that truly sets the standard.



# PARAGON

Designed for RUSH drummer Neil Peart, Paragon cymbals combine the explosive power of AA, the warmth of HH and the wide dynamic range of AAX. Like Peart, they are powerful, bright and extremely musical. Paragon is full-on power, with the sensitivity to dip into lower dynamics.

# Powerful



Dynamic, bright musical sounds designed for RUSH drummer Neil Peart

## OUR DESIGN

- AA High-profile shape
- AAX-lathed top, AA-lathed bottom
- Hand hammered bell

## YOUR PERFORMANCE

- Raised pitch, increased brightness
- Wide dynamic range, toughness
- Adds warmth to eliminate harshness



Part # | Size | Weight | Finish

### > RIDES

XH N B

Extra-heavy (8+ lbs!) with solid bell, this ride balances clear sticking with a blend of bright tone.

NP2214N 22" \*

M N B

### > CRASHES

Medium weight models with large, volume-boosting bells and explosive responses.

NP1608N 16" \*

NP1808N 18" \*

NP2008N 20"

M/H N B

### > HI-HATS

Medium weight pairing, for fast, crisp responses and clean, bright and well-defined sticking.

NP1302N 13" \*

NP1402N 14" \*

Part # | Size | Weight | Finish

### > SPLASHES

T N B

Small, thin models with fast, punchy responses and plenty of high-end cutting power.

NP0805N 8" \*

NP1005N 10" \*

XT N B MT N B

### > CHINESE

**Chinese**  
A lighter, wide-flanged 19" with trashy sound or a small-flanged, more direct sounding 20".

NP1916N 19" \*

NP2016N 20" \*

**Diamondback Chinese**  
T N B

Jingles and rivets combine to give this dark sounding model a sizzling accent or ride response.

NP2016ND 20"

Part # | Size | Weight | Finish

### > SETS

**Paragon Performance Set**  
N B

NP5005N  
14" Hats, 16" Crash, 22" Ride

**Paragon Effects Pack**  
N B

NP5005NE  
8" + 10" Splash, 19" Chinese

**Paragon Complete Set-Up**  
N B \*

NP5006N  
8" + 10" Splash, 2x 16" Crash, 18" + 20" Crash, 22" Ride, 19" + 20" Chinese, 13" + 14" Hi-Hats w/Flight Case

**Paragon Splash 'n' Stacker Pack**  
N B

A punchy splash you can add to any cymbal stand with the double-jointed stacker.

NP1005NSP  
10" Splash w/Multi-angle Tilt Stacker



**Paragon Chinese**  
This extremely thin China with tiny bell, short, steeply-angled bow, and wide flanged lip with aggressive HHX super-size hammering is a ferocious model with maximum sensitivity. Bring it to a roar with just one fingertip!



**Paragon Hats**  
A very bright pairing, Paragon Hats offer plenty of body and the potential to get very loud – but enough sensitivity to work in quiet sections.



# Xs<sup>20</sup>

When we launched Xs20, it was the first B20 cast cymbal available at a uni-rolled price. Using a SABIAN-exclusive process to blend pro-level B20 Bronze with modern technology, Xs20 offers high-performance, low-cost cymbals for drummers at all levels.

# Smart

Professional level B20 cast cymbals – at a smart price!

Part # | Size | Weight | Finish

## > RIDES

### Crash Ride

MT N B

This dual-purpose model delivers as a powerful crash or a full, wide-open ride that puts out a huge sound capable of driving the music of any band.

XS1811 18" ★

### Medium Ride

M N B

A tasty balance of stick definition and tonal wash ensures a clean, musical sound at all volumes, with a mid-sized bell for playing solid grooves.

XS2012 20" ★

### Rock Ride

H N B

Heavy weight means more metal for a solid, highly defined stick response that cuts clearly, and powerful bell for playing hard-hitting grooves.

XS2014 20" ★

Xs20 Crash Ride Brilliant

Part # | Size | Weight | Finish

## > CRASHES

### Medium-Thin Crash

MT N B

Combining the response of a thin model with the increased power of a medium-weight, this is a highly versatile and effective crash for any drummer.

XS1407 14" ★

XS1607 16" ★

XS1807 18" ★

### Rock Crash

MH N B

With a large bell and increased metal thickness, this model is designed to deliver full, bright, and powerful accents that cut through the loudest volumes.

XS1609 16" ★

XS1809 18" ★

Part # | Size | Weight | Finish

## > HI-HATS

### Medium Hats

M/H N B

With a highly responsive medium-weight top for accurate sticking response, and a heavy bottom boosting clarity and cut, this pairing is very versatile.

XS1302 13" ★

XS1402 14" ★

### Rock Hats

MH/H N B

This heavy and powerful pairing responds with strong, bright and crisp stick definition when closed, and a loud, solid roar when played semi-open.

XS1403 14" ★

Xs20 Crash Ride Natural



Xs20 Medium Hats

Part # | Size | Weight | Finish

## > SPLASHES

### Splash

XT N B

The fast, bright response from this small, extra-thin model is great for quick, splashy punches and accents that cut in any music.

XS1005 10" ★

XS1205 12" ★

## > CHINESE

### Chinese

T N B

Raw, nasty response is tonally tight and highly aggressive, for playing bright but dirty ride patterns or fast, attacking accents.

XS1816 18" ★

## > SETS

### Xs20 Performance Set

N B

XS5005 ★

14" Hats, 16" Medium-Thin Crash, 20" Ride

Part # | Size | Weight | Finish

### Xs20 Rock Performance Set

N B

XS5009

14" Rock Hats, 16" Rock Crash, 20" Rock Ride

### Xs20 Effects Pack

N B

XS5005E

10" Splash, 18" Chinese

### Xs20 First Pack

N B

XS5001

13" Hats, 16" Crash

XS5011

14" Hats, 16" Crash

### Xs20 2-Pack

N B

XS5002

14" Hats, 18" Crash Ride

### Xs20 Complete Set

N B

XS5006 ★

10" Splash, 14" Hats, 16" Medium-Thin Crash, 18" Medium-Thin Crash, 18" Chinese, 20" Medium Ride

Part # | Size | Weight | Finish

### Xs20 Splash 'n' Stacker Pack

N B

Set this bright, punchy splash up anywhere in your set-up by using the stacker to mount it atop one of your cymbal stands.

XS1005SP

10" Splash w/4"x4" Tilt Stacker

### Garage Mix

N

BX5003

14" B8 Hats, 16" Xs20 Medium-Thin Crash, 18" Xs20 Medium-Thin Crash, 20" B8 Ride

### Gig Mix

B

PX5003

14" B8 Pro Medium Hats, 16" Xs20 Medium-Thin Crash, 18" Xs20 Medium-Thin Crash, 20" B8 Pro Medium Ride

### Club Mix

B

XA5003 ★

14" Xs20 Medium Hats, 16" AAX X-Plosion Crash, 18" AAX X-Plosion Crash, 20" Xs20 Medium Ride



### Xs20 Medium-Thin Crash

Combining the response of a thin model with the power of a medium-weight, this is a highly-versatile and effective crash for any drummer at any level.



### Xs20 Chinese

Raw and nasty, the Xs20 China is tonally bright and highly aggressive. Ideal for bright, dirty ride patterns or fast accents.



# B8 PRO

B8 Pro Medium Ride

Redesigned in 2011, the new B8 Pro features a larger hammering pattern and improved bell design. Delivering intense, focused cut, it's the ideal cymbal for drummers who play with speed, power and aggression. And it's all wrapped up in a brilliant finish with looks that kill.

# Focused Cut

Focused B8 Bronze in brilliant finish, for those who play with speed, power, aggression

Part # | Size | Weight | Finish

## > RIDES

### Medium Ride

M B

Crisp stick attack remains bright and audible, with light wash at higher volumes.

32012B 20"

### Rock Ride

H B

Intensely powerful, with distinct metallic stick definition and a crisp, cutting bell.

32014B 20"

## > CRASHES

### Thin Crash

T B

Quick-response and bright, tight, and focused tonal content add up to cutting accents.

31306B 13"  
31406B 14"  
31506B 15"  
31606B 16"  
31706B 17"  
31806B 18"

Part # | Size | Weight | Finish

## Medium Crash

M B

Solid weight increases volume, power, and definition for cleaner, penetrating punches.

31608B 16"  
31808B 18"

## Rock Crash

MH B

Designed for high-volume playing, with bright, explosive, and full-bodied response.

31609B 16"  
31809B 18"  
32009B 20"

## O-Zone Crash

T B

With a double ring of response-enhancing holes, this radical model responds rapidly with a combination of bright explosion and dirty agitation.

31600B 16"   
31800B 18"



B8 Pro China Splash

Part # | Size | Weight | Finish

## > HI-HATS

### Medium Hats

M/H B

A bright, pedal 'chick' and clean stick response add up to very versatile hats.

31402B 14"

### Rock Hats

H/H B

Strong high-end power is bright, with a focused intensity that's direct, loud and cutting.

31403B 14"

## > SPLASHES

### Splash

T B

Bright response is immediate, cutting and glassy. Great for fast accents.

30805B 8"  
31005B 10"   
31205B 12"

### China Splash

T B

Upside-down design enhances splashy response with trashy bite.

31016B 10"

Part # | Size | Weight | Finish

## > CHINESE

### Mini Chinese

T B

Immediate and aggressive attack is bright with cutting bite. Great for rapid accenting.

31416B 14"

### Chinese

T B

Explosive, brash and bright attack, with deep, dark and trashy undertones.

31616B 16"  
31816B 18"

Part # | Size | Weight | Finish

## > SETS

### B8 Pro Performance Set

B

35003B   
14" Medium Hats, 16" Thin Crash,  
20" Medium Ride

### B8 Pro Rock Set

B

35009B  
14" Rock Hats, 16" Rock Crash,  
20" Rock Ride

Part # | Size | Weight | Finish

## B8 Pro Effects Pack

B

35005B   
10" Splash, 18" Chinese

## Basement Mix

BP5003

14" B8 Hats, 16" B8 Pro Thin Crash,  
18" B8 Pro Thin Crash, 20" B8 Ride

## Gig Mix

B

PX5003  
14" B8 Pro Medium Hats, 16" Xs20 Medium-Thin  
Crash, 18" Xs20 Medium-Thin Crash, 20" B8 Pro  
Medium Ride

## B8 Pro O-Zone Crash

With a double ring of response-enhancing holes, this radical effects crash responds with a combination of bright response and dirty agitation.



## B8 Pro Chinese

Loud, explosive, very colourful and trashy, this is a China that attacks brightly while dishing out deep, dark undertones.



# B8

Precision formed, hammered and lathed for pure, tonally tight sounds, B8 is the bright, cutting sound of pure bronze. It's the ideal first step for drummers looking to get into their first set of bronze cymbals at a great value. With a wide range of models to choose from, B8 is easy to get into.

# Bright

Bright B8 Sounds – for drummers getting into their first set of Bronze cymbals



B8 Rock Crash

Part # | Size | Weight | Finish

## > RIDES

### Ride

M N

Crisp stick definition, cutting bell, and bright tonal response create a versatile ride.

42012 20" \*

### Crash Ride

M N

Blending explosive crash power with full ride response. Great multi-purpose ride.

41811 18"

### Rock Ride

H N

Clean and solid sticking with a crisp, solid bell, for total clarity at all volumes.

42014 20"

42114 21"



B8 Crash Ride

Part # | Size | Weight | Finish

## > CRASHES

### Thin Crash

T N

Fast, punchy, bright and loud attack makes this a cutting crash.

41406 14"

41506 15"

41606 16" \*

### Medium Crash

M N

Fast, solid response for an explosion of bright tone for bigger, fuller accents.

41608 16" \*

41808 18"

### Rock Crash

MH N

Explosive response is fast, full, and powerful, for total presence and penetrating power.

41609 16"

41709 17"

41809 18"

41909 19"

42009 20"

B8 Rock Ride

Part # | Size | Weight | Finish

## > HI-HATS

### Hats

M/H N

Crisp and lively stick and pedal responses are very bright and definite, clean, and penetrating.

41302 13"

41402 14" \*

### Rock Hats

MH/H N

Heavy pairing is loud, with crisp, cutting stick definition ensuring optimum cut.

41403 14"

## > SPLASHES

### Splash

T N

Extremely fast and bright with punchy, high-end cut for fast accents.

40805 8"

41005 10" \*

41205 12"



Part # | Size | Weight | Finish

## China Splash

T N

Reverse-design model, for raw, punchy accents. Mount upside down atop your crash.

41016 10"

## > CHINESE

### Mini Chinese

T N

A smaller, punchier Chinese design for fast, biting accents.

41416 14"

### Chinese

T N

Bright bite is aggressive and edgy, with a cool, cutting rawness that is immediate and trashy.

41816 18" \*



### B8 Hats

Lively, crisp sticking and tight, bright pedal response are hallmarks of this clean, penetrating pairing that deliver versatility and value in spades.

Part # | Size | Weight | Finish

## > SETS

### B8 Performance Set

N

45003 \*

14" Hats, 16" Thin Crash, 20" Ride

### B8 Rock Set

N

45009

14" Rock Hats, 16" Rock Crash, 18" Rock Crash, 21" Rock Ride

### B8 Effects Pack

N

45005 \*

10" Splash, 18" Chinese

### B8 First Pack

N

45001

13" Hats, 16" Crash

45011 \*

14" Hats, 16" Crash

Part # | Size | Weight | Finish

## B8 2-Pack

N

45002

14" Hats, 18" Crash Ride

## B8 Complete Set

N

45006

10" Splash, 14" Hats, 16" Thin-Crash, 18" Thin-Crash, 18" Chinese, 20" Ride

## B8 Splash 'n' Stacker Pack

N

With this splash there's no need to buy another cymbal stand. Use the stacker.

41005SP \*

10" Splash w/6" SABIAN Stacker

## Basement Mix

BP5003 \*

14" B8 Hats, 16" B8 Pro Thin Crash, 18" B8 Pro Thin Crash, 20" B8 Ride

## Garage Mix

N

BX5003

14" B8 Hats, 16" Xs20 Medium-Thin Crash, 18" Xs20 Medium-Thin Crash, 20" B8 Ride



### B8 Splash

Extremely fast and bright – with punchy high-end cut for playing fast accents.



# sbr

Where you begin as a drummer is important. For that reason, we've designed SBr cymbals to make your first steps easy and enjoyable. Hammered and lathed, SBr cymbals deliver the tightly focused sounds of pure brass – at a very nice price. Available in popular models and sizes, including a choice of 3 box sets.

## The Best Brass

Pure SABIAN Brass Cymbals – because where you start matters

Part # | Size | Weight | Finish

### Splash

T N

Small and thin, with a fast, punchy and splashy accent response.

SBR1005 10"

### Hats

M/M N

This pairing delivers tight, clean sounds when closed, and loud fullness when open.

SBR1302 13"

SBR1402 14"

### Crash

T N

Powered by pure brass, a loud and punchy model for accenting.

SBR1606 16"

Part # | Size | Weight | Finish

### Crash Ride

M N

A dual-purpose model for full-sounding riding or loud crashing.

SBR1811 18"

### Ride

M N

Strong, clean stick definition and a bright bell add up to versatility.

SBR2012 20"

Part # | Size | Weight | Finish

### > SETS

#### SBr Performance Set

N

SBR5003

14" Hats, 16" Crash, 20" Ride

#### SBr First Pack

N

SBR5001

13" Hats, 16" Crash

#### SBr 2-Pack

N

SBR5002

14" Hats, 18" Crash Ride



# SR<sup>2</sup>

Available in Drumset and B&O models, SR2 are refurbished B20 Bronze cymbals available to you at a great value!

## The Best Value

SABIAN SR2 models are factory refreshed B20 bronze cymbals from the HHX, HH, AAX or AA series that have been returned from trade show debuts, or artist loaners played on concert tours. After a thorough inspection process, qualifying models are refurbished and sold as SR2 – where they're available to you at a great price! Available in 3 weight categories – Heavy, Medium and Thin – SR2 are marked only with their weight and size. Combined with a distinct finish which serves to distinguish them from our new cymbals, you never know for sure what series your SR2 came from. But guessing is half the fun!





# Band & Orchestral

SABIAN blends classic band and orchestral sounds with innovative and creative designs to produce award-winning cymbal and percussion instruments.

AA Marching Band

HHX Synergy Medium

Part # | Size | Weight | Finish

## > HAND CYMBALS

### SBr

#### Band

MH N

The controlled sound of pure brass makes SBr a consideration for budget-driven applications.

SBR1422 14"  
SBR1622 16"

### B8

#### Band

MH N

Bright, yet musical bronze cymbals. Controllable by young percussionists, B8 is affordable for all music programs.

41422 14"  
41622 16"  
41822 18"

### B8 PRO

#### Marching Band

MH B

Moderately priced medium weight is ideal for smaller high schools and junior high marching bands. Brilliant Finish.

31422B 14"  
31622B 16"  
31822B 18"

Part # | Size | Weight | Finish

### Xs20

#### Concert Band

M N B

Easy-to-play B20 bronze pairing delivers bright, musical sounds with articulation and projection.

XS1421 14"  
XS1621 16"  
XS1821 18"  
XS2021 20"

### AA

#### French

MT N B

The lightest, thinnest model is very sensitive, with fast, bright and glassy sounds.

21619 16"  
21819 18"

#### Viennese

M N B

Medium thickness and weight produce a fuller sound with more moderate decay.

21620 16"  
21720 17"  
21820 18"  
21920 19"  
22020 20"  
22120 21"

Part # | Size | Weight | Finish

### Concert Band

M N B

Medium-weight models are more penetrating than Viennese and offer greater multi-purpose applications.

21621 16"  
21821 18"

### Marching

MH N B

Medium-heavy weight provides full-bodied sound with long decay. Ideal for multiple genre applications.

21422 14"  
21622 16"  
21722 17"  
21822 18"  
21922 19"  
22022 20"

### Drum Corps

H N B

Heavy-weight pairing delivers maximum attack with penetrating power and robust musicality.

21620 16"  
21825 18"  
21925 19"  
22025 20"

Xs20 Concert Band

Part # | Size | Weight | Finish

### AAx

#### Arena Medium

M N B

Large bell enhances ease of playing. Medium weight offers projection, articulate attack, and controlled sustain.

21822X 18"  
21922X 19"  
22022X 20"  
22222X 22"

#### Arena Heavy

H N B

Heavy weight offers maximum projection, percussive attack and long, controlled sustain.

21825X 18"  
21925X 19"  
22025X 20"  
22225X 22"

#### New Symphonic Medium Light

M N B

Bright musical tonality with sensitivity and shimmer. Similar to Viennese with longer sustain.

22256X 22"

#### New Symphonic Medium Heavy

MH N B

Bright, glassy response with increased cut and clarity. Similar to Germanic with longer sustain.

21855X 18"  
22055X 20"  
22255X 22"



AAX Arena Heavy

Part # | Size | Weight | Finish

### HH

#### French

MT N B

Thinnest hand hammered models respond quickly with warm, glassy sounds.

11619 16"  
11719 17"  
11819 18"  
12019 20"  
12219 22"

#### Viennese

M N B

Medium-weight models respond with fuller, darker sounds and moderate decay.

11620 16"  
11720 17"  
11820 18"  
11920 19"  
12020 20"  
12120 21"  
12220 22"

#### Germanic

MH-H N B

Heaviest pairing delivers dark tonality with powerful, musically robust responses.

11624 16"  
11724 17"  
11824 18"  
11924 19"  
12024 20"

#### New Symphonic Medium Light

ML-M N B

Warm, musical tonality with sensitivity and shimmer. Similar to Viennese with longer sustain.

11856 18"  
12056 20"

#### New Symphonic Medium Heavy

MH N B

Warm, musical tonality with sensitivity and shimmer. Similar to Germanic with longer sustain.

11855 18"  
12055 20"

Part # | Size | Weight | Finish

### HHX

#### Banda Turca

MH N B

Sound is extremely well defined – with rapid response and decay rates – making these ideal for quick accents and cutting through other instruments in orchestral settings.

11420XBT 14"  
11520XBT 15"

#### New Symphonic French

MT N B

Cool shimmer and warm tone combine to create a musically full response.

11819XN 18"  
12019XN 20"

#### New Symphonic Viennese

M N B

Tonal richness and HHX warmth make for a musical pairing.

11820XN 18"  
12020XN 20"

#### Philharmonic

MH N B

Versatile, medium-weight cymbals with pronounced midrange overtones and enhanced sustain.

11621XN 16"  
11821XN 18"

#### New Symphonic Germanic

MH-H N B

Heavy design combines with HHX 'Tone Projection' to deliver robust warmth.

11824XN 18"  
12024XN 20"

#### Synergy Medium

M B

Embracing low, mid and high partials within a smooth, robust response that is totally musical, these cymbals play with absolute ease.

11794XBM 17"  
11894XBM 18"  
11994XBM 19"  
12094XBM 20"  
12194XBM 21"



Part # | Size | Weight | Finish

### Synergy Heavy

MH-H B

Heavy weight ensures robust, simmering response and increased projection with this dynamic, easy-to-play pairing.

11794XBH 17"
11894XBH 18"
11994XBH 19"
12094XBH 20"
12194XBH 21"

### ARTISAN

#### Traditional Symphonic Medium Light

ML-M N B

This lighter Artisan pairing responds with a splashy sensitivity, a rich, warm, musically complex tone, and a shorter sustain than the Medium-Heavy pairing.

A1656 16"
A1756 17"
A1856 18"
A1956 19"
A2056 20"

#### Traditional Symphonic Medium Heavy

MH-H N B

With a heavier weight, this Artisan pairing is more articulate and focused, providing a longer sustain than the Medium Light pair.

A1655 16"
A1755 17"
A1855 18"
A1955 19"
A2055 20"

#### Traditional Symphonic Medium Heavy Extra Dark

MH N B

Provide exceptionally clear articulation, extended dynamic range and the ability to cut through any orchestral setting.

A1855E 18"
A2055E 20"



Artisan Traditional Symphonic Medium Heavy

Part # | Size | Weight | Finish

### > SUSPENDED CYMBALS

#### Xs20

##### Suspended

MT N B

Crashes and swells with bright, penetrating energy. A dynamic cymbal and tremendous value at a great price.

XS1623 16"
XS1823 18"
XS2023 20"

#### AA

##### Suspended

T N B

Bright, penetrating sound is full of dynamic energy and presence.

21623 16"
21723 17"
21823 18"
21923 19"
22023 20"

#### Molto Symphonic Suspended

T N B

Smooth, shimmering sound is bright and impactful at all volumes.

21689 16"
21789 17"
21889 18"
21989 19"
22089 20"

#### AAX

##### Suspended

T/MT N B

Sensational orchestral model features enhanced complexity and rich sound quality at all levels.

21623X 16"
21723X 17"
21823X 18"
21923X 19"
22023X 20"

#### HH

##### Suspended

T N B

Rich, full-bodied warm sound builds smoothly for crescendos, or crashes boldly for accents.

11623 16"
11723 17"
11823 18"
11923 19"
12023 20"



HH Suspended

Part # | Size | Weight | Finish

### HHX

#### Suspended

T N B

Just touching this sensitive model creates a warm, dark musical spread, with a tonal range that extends upward as volume increases.

11623XN 16"
11723XN 17"
11823XN 18"
11923XN 19"
12023XN 20"

### ARTISAN

#### Suspended

T N B

Premium 'Old World' sounds that are tonally deep, dark and rich, with a robust vintage musicality.

A1523 15"
A1623 16"
A1723 17"
A1823 18"
A1923 19"
A2023 20"

### > EDUCATIONAL SETS

#### AA Concert Band Set

N B

216CB
16" Concert Band (pr.), 16" Suspended, Free EZ™ Cymbal Straps (pr.)

#### AA Molto Symphonic Suspended Set

N B

22089SET
16", 18", 20"

#### B8 Concert Band Set

N B

416CB
16" Band (pr.), 16" Thin Crash, Free EZ™ Cymbal Straps (pr.)

#### HH Suspended Set

N B

12023SET
16", 18", 20"

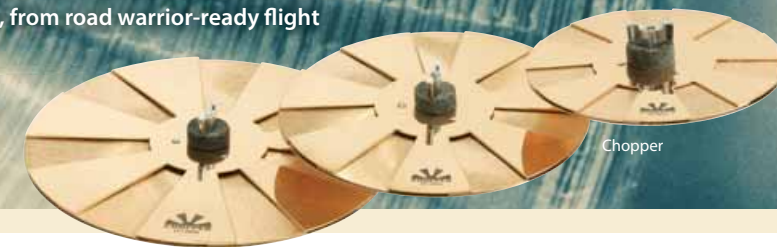
#### HHX Suspended Set

N B

12023XNSE
16", 18", 20"

# Gongs, Percussion & Accessories

You know SABIAN for our award-winning Bronze cymbals, but our Bronze is also used for these best-selling percussion instruments. And did you know we carry a wide range of accessories, from road warrior-ready flight cases to Cymbal Mute Effects Packs?



Chopper

Part # | Size | Weight | Finish

#### Chinese Gong

Traditionally hammered for prized oriental sound. Produces a definite primary impact response followed by an outpouring of raw, dark overtones. Very full sounding.

53001 30"
53401 34"
54001 40"

#### Symphonic Gong

Produces a powerful and sturdy fundamental note which is enhanced and softened by harmonic overtones, creating a full, warm and round response. Very tonal.

52402 24"
52602 26"
52802 28"

#### Ice Bell

Heavy-weight 12" bell provides a very definite, high-pitched, bell-like sound. A great percussion piece for colorful accenting and effects.

51299 12"
-----------

#### Alu Bell

Cast from aluminum, this musical effect produces a soft, bright and sustaining sound.

AB7 7" *
AB9 9" *
AB11 11"



Alu Bell

Part # | Size | Weight | Finish

#### Hoop Crasher

Designed by Jojo Mayer, this dual-ring effects device offers unmatched versatility and a massive palette of sound. Manufactured from a set of premium B20 Bronze hi-hats – the top flotation ring is punched with 32 holes for lightness and lift, while the heavier bottom ring is designed with an X-Celerator Air-Wave lip to eliminate airlock and minimize contact area with the snare head.

HC-14 14" L/M N
-----------------

#### Chopper

Innovative 3-layer design fits on a cymbal stand, and delivers super-fast white-noise responses, making this a great effect for playing rhythms and accents in drum and percussion set-ups.

CH08 8"
CH10 10"
CH12 12" *

#### Crotales

Available in low- or high-octave sets (13 discs), complete with mounting bar (fits standard cymbal stand). Full octave sets include universal mounting bar that fits different-sized cymbal stands. Individual crotales available. Please indicate specific note. Crotales are tuned to A + 442 unless otherwise requested.

#### High Octave Set

50303H
--------

#### Low Octave Set

50303L
--------

#### Single

50301
-------

Part # | Size | Weight | Finish

#### Stage Bell

This small bell puts out a bright, pure sound that penetrates clearly in any drum or percussion set-up.

507B 7"
509B 9"

#### Finger Cymbals

Solid bronze pairings in choice of weights, for ringing, bell-like sounds.

(Pair) Light
--------------

L

50101
-------

(Pair) Heavy

H

50102
-------

#### ThunderSheet

Roaring slice of raw bronze is ideal for effects and crescendos in drum and percussion set-ups.

52604 18"x26"
53004 20"x30"

#### Becker Bow Cymbal (HHX)

Unique effect created in collaboration with Bob Becker; produces a variety of eerie and ethereal sounds when a cymbal bow is drawn across the flat or rounded edges of its unique design. (Bow sold separately)

BOW16 16"
-----------

#### Aluminum Bar Chime

61174A-24
-----------

#### B8 Bronze Bar Chime

61174B-24
-----------



Part # | Size | Weight | Finish

> TRIANGLES

**B8 Bronze Triangle**

61134-4B8	4"	
61134-5B8	5"	
61134-6B8	6"	★
61134-7B8	7"	
61134-8B8	8"	
61134-9B8	9"	
61134-10B8	10"	

**Hand Hammered B8 Bronze Triangle**

61135-4B8H	4"	
61135-5B8H	5"	
61135-6B8H	6"	★
61135-7B8H	7"	
61135-8B8H	8"	
61135-9B8H	9"	
61135-10B8H	10"	

**Regular Triangle & Striker Set w/Attaché Case**

61140R



Hand Hammered B8 Bronze Triangle



Regular Triangle & Striker Set with Attaché Case



Sound Shapers

Part # | Size | Weight | Finish

> QUIET TONE BY SABIAN

**Quiet Tone Pack w/Sticks**

QT-PACKG Generic Sticks

**Drum Mute/Practice Pad (Snare)**

QT-10SD	10"	★
QT-12SD	12"	
QT-13SD	13"	
QT-14SD	14"	★

**Drum Mute/Practice Pad (Tom)**

QT-10TT	10"	
QT-12TT	12"	
QT-13TT	13"	
QT-14TT	14"	
QT-16TT	16"	

**Cymbal Mute Performance Pack**

CMPS

**Cymbal Mute Effects Pack**

CMEP

**Cymbal Mute First Pack**

CM1P

**Cymbal Mute 2-Pack**

CM2P

**Cymbal Mute Master Pack**

CMMP

**Ride Cymbal Mute**

CMR

**Hi-Hat Cymbal Mute**

CMHH

Part # | Size | Weight | Finish

**Crash Cymbal Mute**

CMCR

**Splash Cymbal Mute**

CMS

**China/Crash Cymbal Mute**

CMCH

**Utility Cymbal Mute**

CMU

**Cymbal Sound Shapers (pkg 6)**

SHAPERS

**Practice Disc Fusion Pack**

FUSION

**Practice Disc Classic Pack**

CLASSIC

**Practice Disc (Tom)**

PD10T	10"	
PD12T	12"	
PD13T	13"	
PD14T	14"	
PD16T	16"	

**Practice Disc (Snare)**

PD14 14"

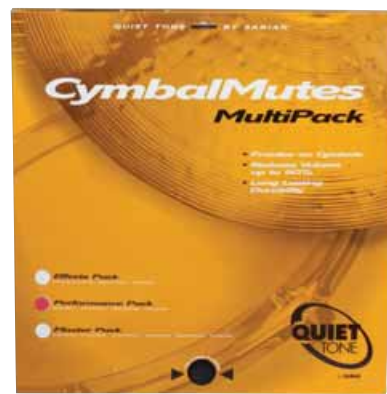
**Bass Drum Practice Disc**

PD18BD	18"	
PD20BD	20"	
PD22BD	22"	★
PD24BD	24"	

**Quiet Tone Bass Drum Impact Pad**

IMPACT PAD

Cymbal Mute Performance Pack



Part # | Size | Weight | Finish

> BAGS & CASES

**Flight Case**

61077 22"

**Standard Cymbal Bag**

61008	22"	★
61014	24"	

**Basic Cymbal Bag**

61035 22"

**"BacPac" Cymbal Bag**

61016 22" ★

**Hard Shell Crotale Case**

61139

**Economy Stick Bag**

61144 ★

**Standard Stick Bag**

61142

**Premium Stick Bag**

61143 ★

**Black Zippered Triangle Bag**

61140-4	4"	
61140-6	6"	★
61140-8	8"	
61140-10	10"	

**Triangle/Striker Attaché Case**

61140

**Rigid Striker Set Bag**

61141

**Tom Gauger Crash Caddy**

61137

**Tom Gauger Stand Pad**

61138



BacPac Cymbal Bag



Ratchet Drum Key Tool

Part # | Size | Weight | Finish

> STANDS & HOLDERS

**Straight Stacker**

61088	4"	★
61159	6"	
61090	8"	
61091	12"	

**Tilt Stacker**

61160	4" x 4"	
61087	2.5" x 4" x 2.5"	★

**Orchestral Gooseneck Stand**

61111NP

**Cymbal Cradle**

61121

**Triangle Clip**

61122

**Triangle Holder**

61123

**Gong Stand (Small)**

61005 22"-34"

**Gong Stand (Large)**

61006 40"-48"

> MALLETS & STRIKERS

**Hard Suspended Cymbal Mallets with Rattan Handles**

61124

**General Suspended Cymbal Mallets with Rattan Handles**

61125

**Fortissimo Crotale Mallets (1" Ball w/Black Birch Handles)**

61126

**Mezzoforte Crotale Mallets (7/8" Ball w/Black Birch Handles)**

61127

**Gong Mallet (Small)**

61004S

**Gong Mallet (Large)**

61004L

**Cymbal/Crotale Bow**

61132

**Cymbal/Crotale Bow Rosin**

61133

**Stainless Steel Triangle Striker**

61128	1/8"	
61129	3/16"	★
61130	1/4"	

**Striker Set w/Bag**

61131 1/8", 3/16", 1/4"

Part # | Size | Weight | Finish

> STRAPS, PADS & RIVETS

**Premium Cymbal Straps (Pair)**

61002X

**Leather Cymbal Straps (Pair)**

61002

**Nylon Cymbal Straps (Pair)**

61015PR

**EZ Cymbal Straps (Pair)**

61002EZ

**Leather Cymbal Pads (Pair)**

61001

**Sizzle Rivets (package of 25)**

61010

> MAINTENANCE KITS, CLEANERS AND KEYS

**Drumhead Repair Kit**

Cut to size and apply for temporary repair. REPAIR

**SABIAN Logo Renewal Kit**

Pen and stencil kit to upgrade/replace worn SABIAN logo. LOGO

**Crisis Kit**

A drummer's dream: small kit to handle broken/missing items. CRISIS ★

**Felt Pack**

A selection of felts in various sizes. FELT-PACK

**Cymbal Cleaner**

Cleans all SABIAN cymbals – all series, all metals, all finishes. 61023N 61023NC (12 Pack) ★

**Ratchet Drum Key Tool**

Quickly cranks drums to full tension. Fits square and slot-style tuning lugs. KEY-03

**SABIAN Drum Key**

The classic key with the SABIAN logo. Fits square tuning lugs only. 61011 ★



Cymbal Cradle





SABIAN Ltd. 219 Main Street, Meductic, NB, CANADA E6H 2L5  
T: +1 506.272.2019, F: +1 506.272.2040, E: [sabian@sabian.com](mailto:sabian@sabian.com)

[sabian.com](http://sabian.com)

SOUNDCAT13

