



SAKAE
THE ART OF SOUND CREATION





Eizo Nakata, President
Sakae Drums

2015 marks our 90th anniversary

at SAKAE Rhythm, as well as a big turning point for us. Beginning with the founder, Eiichi Nakata, everyone at SAKAE has dedicated themselves to producing the highest quality drums which have been enjoyed and embraced by so many people worldwide.

I know that we are here because of two key factors: our commitment to the traditions of making drums of the utmost quality and excellence, which are hand crafted in our factory by the finest skilled craftsmen; and all our fans from around the world who support us.

As “Sakae” means “prosperity” in Japanese, we continue to take the art of sound creation to an even higher level for the player, the audience and every music fan.

Eizo Nakata

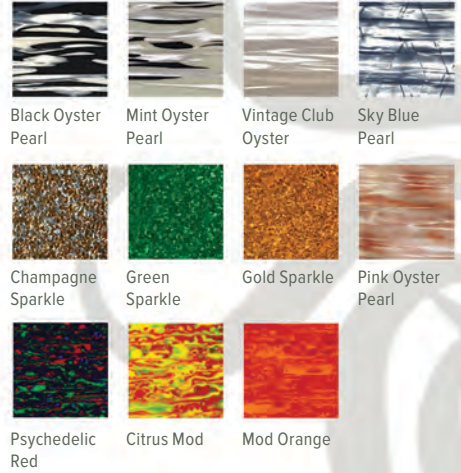
YEARS

SAKAE



Trilogy Vintage Club Oyster

Available colors:



Trilogy

SERIES

Sakae Drums is revisiting a legendary drum sound with the introduction of the Trilogy series. “Our approach was to utilize the 3-ply shell in a way that would have a distinctive Sakae sound, but still pay homage to that vintage sound so loved after all these years,” states Eizo Nakata, president of Sakae Drums.

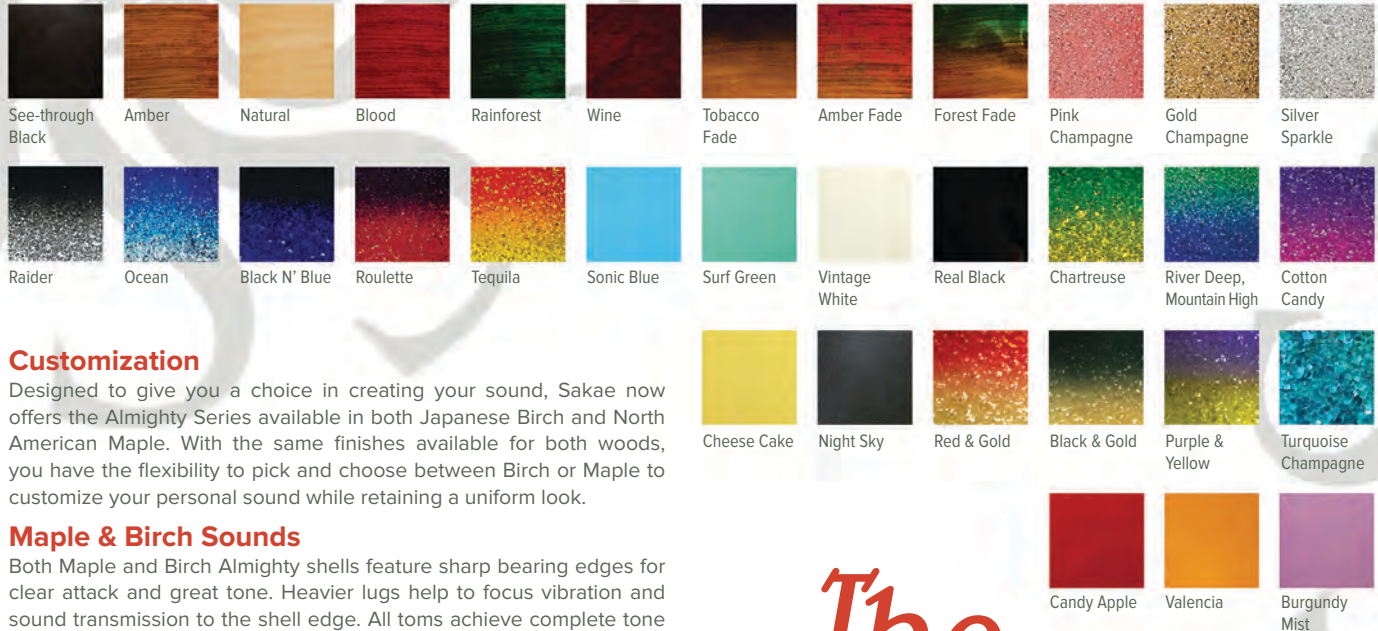
Sakae’s proprietary Maple/Poplar/Maple 3-ply shells are at the heart of Trilogy’s vintage sound. 4-ply North American Maple reinforcement rings at the top and bottom of the shell help to dry the sustain and keep the ultra-thin shell in round.

The hardware is lightweight and helps allow the thin shell to resonate as much as possible. Also, the Trilogy series is extremely lightweight, making it the perfect kit for the classic Jazz tones of the ‘50s. Sakae’s distinctive attack, when utilized with thicker drumheads, creates the punchy, dry tones of early R&B and ‘70s Rock.



Trilogy Mint Oyster Pearl

Available colors:



Customization

Designed to give you a choice in creating your sound, Sakae now offers the Almighty Series available in both Japanese Birch and North American Maple. With the same finishes available for both woods, you have the flexibility to pick and choose between Birch or Maple to customize your personal sound while retaining a uniform look.

Maple & Birch Sounds

Both Maple and Birch Almighty shells feature sharp bearing edges for clear attack and great tone. Heavier lugs help to focus vibration and sound transmission to the shell edge. All toms achieve complete tone isolation thanks to Sakae's unique cradle mounting toms, floor tom leg mounts, and rubber padded bass drum spurs.

Japanese Birch

Japanese Birch has been used on some of the world's most recorded drums in history. Being intimately familiar with this wood, the artisans at Sakae fill a recent sound void with the new Almighty Birch kit, capturing and defining a sound that is quintessential to both the recording and live drummer.

The Almighty SERIES

Almighty Birch Real Black





Almighty Maple Amber Fade



Almighty Maple Ocean



Celestial Pearl White

Celestial

Chamber Specific Technology

SERIES

The Celestial kit features Sakae's new **Chamber Specific Technology (CST)** process, which is another innovation in the 90 year history of Sakae drum making and the result of decades of collaborations with some of the world's top drummers. This ground-breaking instrument focuses on each drum (or "Chamber") and the specific treatment needed to produce the most desired sound for that sized shell. With the CST process, Sakae has essentially pre-EQ'd each drum so that each speaks with its ultimate musical tone.

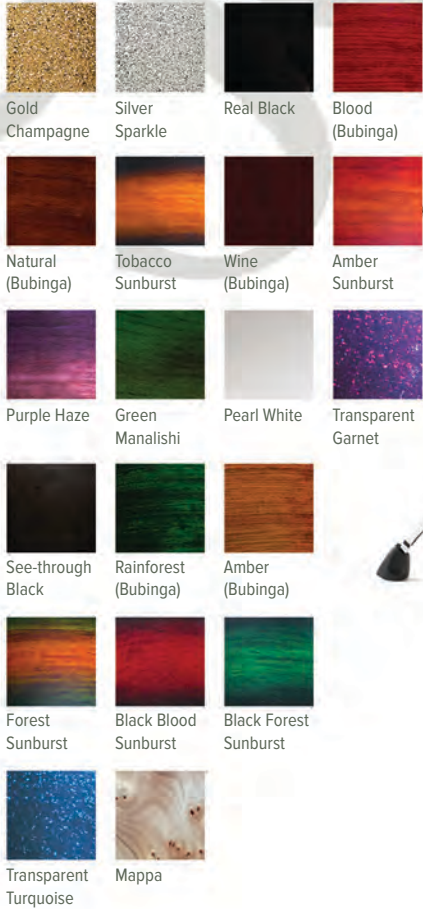
The Celestial Series uses 2-plyes of African Bubinga on the outside of the shell combined with North American Maple on the inside. By having the harder Bubinga wood at the bearing edge where the head contacts the drum, you get the most profound properties.

Keeping this consistent tone and level of resonance from the hardwood allows Sakae to adjust the low-end, sustain, and projection for the various drum sizes. The amount of plys and the bearing edge of each shell is determined by what is best for the size of the drum. For example a bigger drum, such as a bass drum, has a 10-ply shell with a rounder bearing edge, while a smaller rack tom will have a 4 to 6-ply shell with sharper edges. All of this, while maintaining a drum kit's collective sound. Never before has a drum kit been treated with this level of focus to get the optimal sound and tone from each drum in the kit. The expression level, tuning range, presence and purity of tone is unparalleled.



Celestial Amber Sunburst

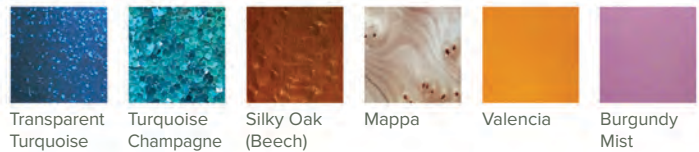
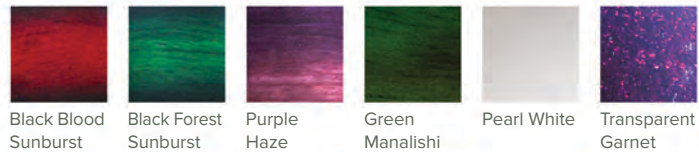
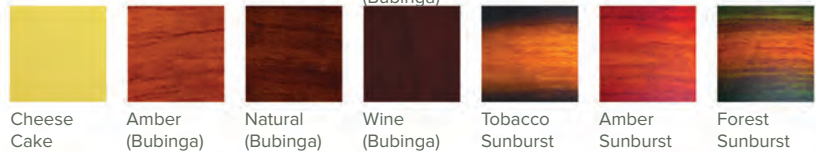
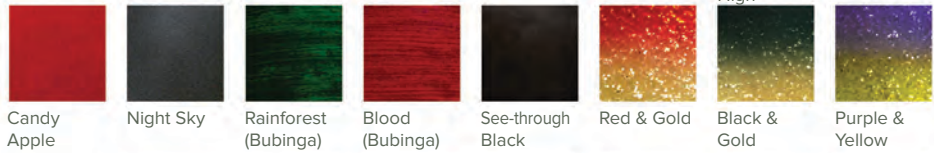
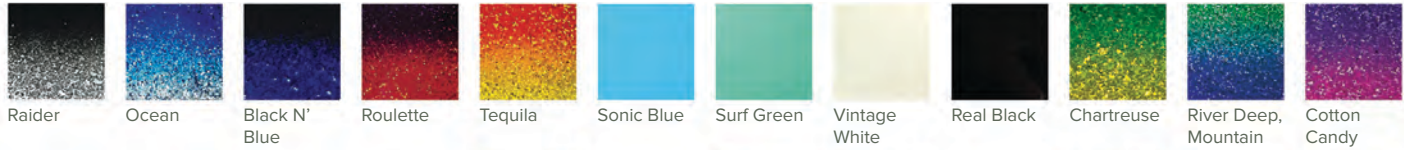
Available colors:



Celestial Purple Haze



Celestial Mappa Natural



SAKAE DRUMS

Metal Snare Drums

Sakae Metal Snare drums feature brass, seamless aluminum and steel. They are available in 14" x 5.5" and 14" x 6.5" sizes. Specifically designed lightweight lugs and high quality, compact strainers allow for each shell's characteristic to be heard clearly. The bead is located at the edges to allow for a wider tuning range and easier transition of vibration.

Wood Snare Drums

Sakae's Wooden Snare drums feature heavy union lugs combined with wood shells for maximum resonance. The throw off has been designed to be one of the smoothest and quietest on the market.

Effects Snare Drums

Sakae has created specific Effect Snare drums to enhance and accentuate unique sound colors needed in today's music. Each of these drums are outfitted with lighter hardware to allow the shell to be as free as possible. This freedom allows for the characteristic of the shell to ring more honestly and true.

Concert Snare Drums

Sakae's Concert Snare drums are created with the utmost sensitivity in mind. From the different maple shell construction to the special Sakae made snare wires, every detail has been designed for the touch of the most sensitive of players.

BRASS



WOOD



Stave

Maple

Mappa
(Bubinga)

Trilogy
(Maple-Poplar-Maple)

Bubinga

Beech

EFFECTS



Maple

ALUMINUM



STEEL



CONCERT



Maple

Bubinga



SAKAE HARDWARE

Flat Base Hardware

Sakae Drums flatbase hardware is perfect for the gigging drummer who is looking for lightweight sturdy hardware. Flatbase legs provide a clean and organized look. All stands collapse completely for efficient storage and are extremely lightweight for easy transport. With center position cymbal tilters and vintage-style top rods instead of pipes, this line of hardware screams *classic*.



Flatbase



Single Braced

Drum Thrones

Drum thrones are available with your choice of a round or saddle seat with each providing the utmost in comfort.



X-Calibur Bass Drum Pedals

Sakae's X-Calibur Drum Pedals feature a solid base plate AND frame which enables you to adjust the beater at will and without wasting power.



Single/Double Braced Hardware

Sakae Drums single and double braced hardware provide maximum durability and stability—single braced being lighter in weight. Smooth, step-less tilters on the snare drum stand and all cymbal stands allow for infinite positioning possibilities. The boom cymbal stand is convertible so that it can also be used as a straight stand. Cymbal stands also include center position cymbal tilters.

Independent movable legs on the hi-hat stand can be set at any angle, leaving plenty of room for additional pedals. And the hi-hat stand offers an eight step tension adjuster and an easy locking clutch.



Pac-D Sonic Blue



Pac-D Gloss Black

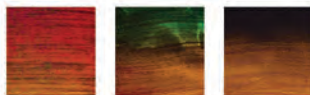


Sakae Drums made it possible for a compact drum kit to still maintain the same power and sound of regular sized kits, yet be easy to carry and set up anywhere. The bass drum raiser is suitable for many different sizes of drums and its height is adjustable. The huge drum sound generated by this small kit is suitable for any style of music.

Available colors:



Sonic Blue Gloss Black Orange



Amber Fade Forest Fade Tobacco Fade

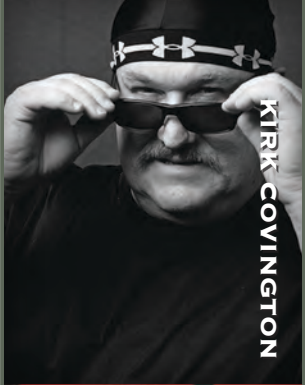
Pac-D Orange



pacD SERIES



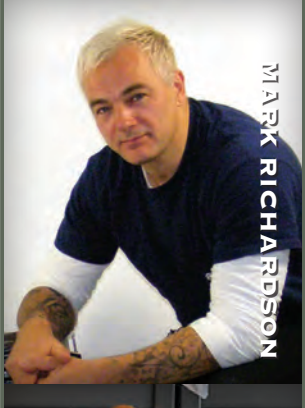
NDUGU CHANCLER



KIRK COVINGTON



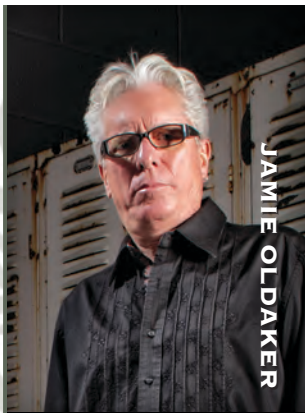
PHIL GOULD



MARK RICHARDSON



KIM HYO KYUNG



JAMIE OLDAKER



CHAD CROWELL



TYLER GREENWELL



EMANUEL HARROLD



KARIEEM RIGGINS



LEWIS NASH



ROGER BIWANDU



BOBBY ALU

SAKAE ARTISTS



NEAL WILKINSON



RAYENDRA SUNITO



NAPAT PIRIYAKITSARUN



JAMEY TATE



DAMION REID



CHARLIE PAXSON



TOMOYA



GREG HUTCHINSON



JACK POLITT



TOAR PELEKA



WAYNE PROCTOR

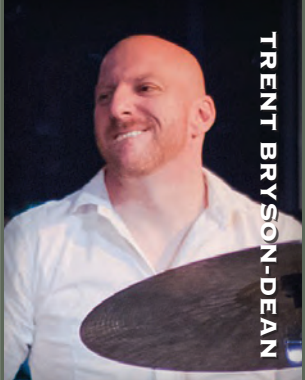


HIROYUKI NORITAKE





GARY NOVAK



TRENT BRYSON-DEAN



TUOMAS RAUHALA



CHAYUT BURAKKAMKOVIT



HERVE KOSTER



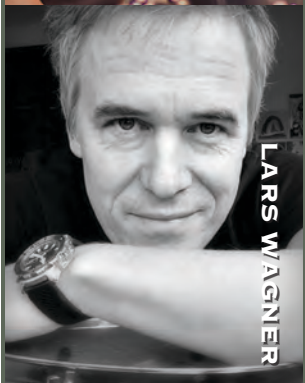
RICHARD JUPP



BENEDIKT BRYNLEIFSSON



FABIEN DUBOS



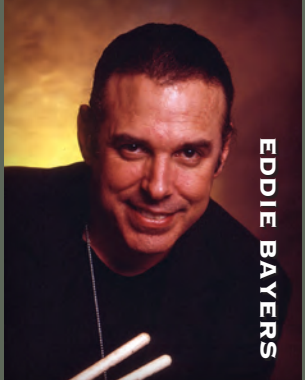
LARS WAGNER



TIMO HAKKINEN



JJ JOHNSON



EDDIE BAYERS



LARRY MARSHALL



JONATHAN JOSEPH





ASH SOAN



MARCUS FINNIE



WOONGWON HAN



ALEX TORJUSSEN



NYOMAN MEI



ERIC HARLAND



ROBY CORELLI



SAMUEL "BEAST" RUSLI



MARCEL BACH



SAKAE

THE ART OF SOUND CREATION

SAKAE DRUMS ARE HANDMADE IN JAPAN

sakaedrums.com
©2015 Sakae Rhythm

