



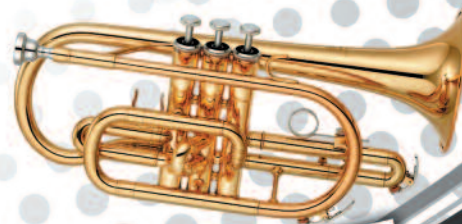
YAMAHA

The Complete Student Range

A Perfect Start for...

- Beginners
- Students
- School and ClassBands

Take your first
musical breath



Welcome



If you are looking to give your students, your children or your school band the best possible opportunity for musical enjoyment and development, this guide has been produced for you.

Yamaha has many years of experience in music education and we have tailored our product lineup to encourage young players to fulfil their musical aspirations with a range of instruments designed specifically for students.

This guide is most suitable for:

- Teachers who advise their students
- Parents looking for the best for their children
- Schools and institutions wishing to organise a school band

Our aims are:

- To inform you about our new Brass and Woodwind student models
- To orientate and advise you on the models most suited to your needs
- To give you technical information and support
- To present our "Yamaha Class Band" concept

Information can also be found on our website: www.yamaha.com

We hope you will find this guide informative and helpful.



Class Band

Yamaha Class Band is the name of Yamaha's new, exciting and motivational music lessons in schools.

The concept is simple: in the 5th grade all students of one class form a Class Band. Each pupil in this class learns and plays a symphonic wind instrument in their regular music lesson and, over a period of two years, they all learn together, in the classroom community.

It sounds impossible but is actually easily achievable thanks to:

- An excellent and ingenious method - The Yamaha Class Band "Essential Elements"
- Music Teachers' special training and qualification courtesy of Yamaha
- The guaranteed quality of Yamaha wind instruments

The Class Band follows the model of a symphonic wind orchestra. Nearly all classical registers in the wood and brass section are represented, from flute to tuba. Basically the instrumentation is proportional to a classical wind band, achieving a full and smooth sound. The pupils choose their instrument by a special procedure and then they systematically learn the techniques and playing skills within two years.

Yamaha Class Band is a Yamaha Music School initiative so answers come from one source. This applies to students, parents, teachers and also specialist dealers. More than 2,000 Yamaha Class Bands already exist and the number is rising constantly. We want children to get the chance of playing a good instrument, to experience what making music means and to learn that music is a great hobby. And this goes far beyond playing music. It is an important contribution for the young peoples' self-development and for this reason an important social task.

Yamaha Class Band - take part and visit our homepage for further information.



Take your first musical breath

Learning to play a musical instrument can be a life-changing experience. It can open a world of opportunity which like no other activity rewards effort with an incomparable sense of achievement.

The relationship between musician and instrument is both tactile and personal. It fulfils the need to communicate and the desire to express your innermost emotions. It is a relationship which can last a lifetime.

The first step is choosing an instrument. Not just any instrument, but the right one. It must perform as you demand. It must translate your touch into beautiful music.

Yamaha has created a new range of instruments designed specifically for the beginner. They are easy to play, reliable and offer exceptional value.

When you take your first musical breath with Yamaha, you'll know you have made the right choice.



Yamaha's unique strengths Product key success factors

Made in Yamaha

Since building our first instrument back in 1887, Yamaha has been committed to supporting total musical excellence in every instrument we make. We apply this philosophy throughout the Yamaha Corporation which embraces manufacturing facilities around the globe.

Environment and Education

Our environmental policies include the use of lead-free solder and our educational activities include ground-breaking initiatives such as ClassBand, the YMFE Scholarship Programme and Yamaha Music Schools. No other manufacturer does more than Yamaha to promote music through education. And no other company is more committed to excellence in everything we do.

Worldwide R&D Ateliers

Yamaha worldwide Ateliers are staffed by some of the world's best technicians responding to the individual requirements of today's instrumentalists from beginner to professional.

Yamaha's new range of student brass and woodwind instruments represents better value than ever. Easy to play and individually crafted for perfect intonation, the Yamaha range ensures your child can make the best possible music start - and have the greatest chance of fulfilling their dream.

- **Perfect touch** - manufactured to exacting tolerances for playing comfort
- **Excellent sound and intonation** - exceptional musicality and easy to play in tune
- **Easy to play** - optimised, beginner-friendly specifications and design
- **Built to last** - over many decades Yamaha has acquired an unrivalled reputation for quality and reliability
- **High Specification** - many professional level features included
- **Superb residual values** - making future upgrades more affordable

Yamaha's Music History

1887	Torakusu Yamaha started the business by building harmonium and organ
1900	Yamaha produced their first piano
1965	Yamaha started wind instrument production and the first trumpet, TR1, was produced
2005	The 10 millionth Yamaha wind instrument was produced
2012	Yamaha celebrates its 125th Anniversary



Three easy steps to choosing the right student instrument.

**1****Real Value Comes From Quality**

Don't confuse low price with good value. Real value comes from quality. A high grade starter instrument might cost more initially but will repay your investment by encouraging and rewarding the learning process.

2**Ask a Music Teacher**

Having witnessed some of their students struggling with inferior instruments, music teachers usually know best. They also prefer instruments that play in tune - instruments like Yamaha.

3**Consider the environment**

Yamaha brass and woodwind instruments produce a small carbon footprint and use lead-free solder. That's great for our kids today and even better for their futures.

Take your first
musical breath



Flutes

The success story continues

Yamaha student flutes are the best-selling student flutes in the world. They have been designed to meet the specific needs of beginners and to be of the highest quality for learning on, as nothing is more frustrating than trying to learn to play on a poor quality instrument.



Case



YFL-211



YFL-271



YFL-281

Well designed and built to the highest standards, Yamaha student line flutes have ergonomically shaped keys and precisely assembled pads, providing the perfect balance and a natural touch.

The most important factor however, is the head-joint. Our CY head-joint is considered to be the best for beginners and amateur players. With its relatively small embouchure-hole and the unique Y-taper of the tube, it helps the player to get a good quality flute sound with ease. The light resistance and quick response are ideal for producing a centered sound with precise intonation. These are all essential ingredients to building the right embouchure, developing a good ear and playing with musicality.

Specifications

- Made from durable nickel-silver
- Silver-plated
- Unique CY head-joint
- C-foot-joint
- FLC-220 case + FLB-200E bag (with shoulder strap)
- YFL-3xx includes a Sterling silver head-joint enhancing tonal performance and colour

Model variations of student flutes YFL-2xx/3xx

Model	Keys	Key-system	E-mechanism	B-foot-joint	Head-joint
YFL-211	covered	off-set G	yes	no	nickel-silver
YFL-211SL	covered	off-set G	yes	no	nickel-silver plus silver lip-plate
YFL-221	covered	off-set G	no	no	nickel-silver
YFL-261	ring-keys	off-set G	no	no	nickel-silver
YFL-271	ring-keys	off-set G	yes	no	nickel-silver
YFL-271SL	ring-keys	off-set G	yes	no	nickel-silver plus silver lip-plate
YFL-281	ring-keys	in-line	no	no	nickel-silver
YFL-311	covered	off-set G	yes	no	solid silver
YFL-321	covered	off-set G	no	no	solid silver
YFL-361	ring-keys	off-set G	no	no	solid silver
YFL-371	ring-keys	off-set G	yes	no	solid silver
YFL-371H	ring-keys	off-set G	yes	yes	solid silver
YFL-381	ring-keys	in-line	no	no	solid silver
YFL-381H	ring-keys	in-line	no	yes	solid silver

YPC-32



With its easy playability, accurate intonation, and characteristic piccolo sound, the YPC-32 is very popular with students all over the world – a voice which should not be missing, particularly in larger ensembles. The body is made of sturdy, maintenance-free ABS resin for a sound similar to that of natural wood, yet very well suited for student use.

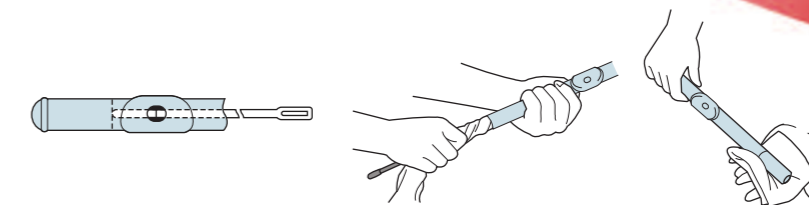
FHJ-200U



This headjoint brings the keys closer to the lip plate for a more comfortable, natural playing position for the younger, smaller flute players. It instantly converts any Yamaha flute into a more compact shape without sacrificing any of that special Yamaha quality. It comes with a convenient case bag which holds both the curved headjoint and the Yamaha flute case.

Maintenance

Polishing Gauze, Polishing/Silicon/Silver/Metal Cloth should be used to clean the surface of your instrument after every use. Swathed in Polishing Gauze, Inner Cloth, Cleaning Rods remove dirt and moisture from the inside of flutes and piccolos. They have a depth mark for visual headjoint adjustment. Long Type Cleaning Rod can be used without disassembling the flute. It comes with a long type cloth.



Cleaning Accessories



Oboe

Start Out Right

YOB-241

Made of extremely durable ABS resin, the YOB-241 student oboe offers a tone very similar to that of natural wood, but with no risk of cracking due to difficult climatic conditions. Featuring a simplified Conservatoire system, it is easy to play and has precise intonation making it ideal for beginners. But it offers a surprisingly rich, colourful sound for a student oboe, thus making it perfect to help players develop a characteristic oboe tone. We deliberately omitted the low-Bb and the third octave key for this beginners' instrument.

Specifications

- Simplified Conservatoire System (no low-Bb, no 3rd octave, no fork-F, no left F)
- Semi-automatic octave keys
- covered and silver-plated nickel silver Keys
- ABS Resin body
- Case OBC-240II



Clarinets

New Models

No One Makes Clarinets Like Yamaha...

Thanks to our worldwide R&D expertise, highly-qualified technicians and state of the art production.



YCL-221II / 221IIS

A bass clarinet is the ideal supplement for every clarinet section. It is tuned one octave lower than a normal soprano clarinet and it has even an extended range down to the low-Eb.

With the YCL-221II/221IIS Yamaha offers a matte finish ABS resin bass clarinet with a tone quality very close to that of a professional wood model. The instrument boasts several important features, including a neck angle similar to that of a soprano clarinet, and a divided main body with a unique joint connector which makes it easy to assemble – thus permitting a compact case.

Specifications

- Bb bass clarinet
- range to low Eb
- 2-piece ABS Resin body
- silver-plated keys, neck and bell
- adjustable thumb-rest
- compact case CLC-221II



YCL-255 / 255E / 255S

A Significant Step Forward

The new YCL-255 clarinets are the perfect start for young clarinet students. Made from durable ABS resin they are easy to handle and with the new adjustable thumb rest and improved strap ring, they are now more comfortable to play. By removing the metal ring from the bell we have made the instrument even lighter yet it still remains very robust. Accurate intonation and immediate response help students to produce a round sound.

Specifications

- ABS resin body with matte surface
- New light-weight bell
- No metal ring on bell
- Adjustable (over 12mm) thumb rest with stronger plate and bigger surface, with straight strap ring
- Synthetic pads and nickel plated keys (YCL-255)
- Synthetic pads, nickel plated keys and left Eb-lever (YCL-255E)
- Bladder pads and silver plated keys (YCL-255S)
- Mouthpiece: 4C
- CLC-200EII light case



YCL-450

Start with professional quality

Featuring a bell shape and barrel design similar to that of V Series models, the YCL-450 offers a surprisingly "professional" sound with an easy response. The new bell design gives improved intonation and projection, especially in the all-important lower register, while the new barrel enhances the 450's response, flexibility and tonal focus. The body is made from selected grenadilla wood and the keys from nickel-silver (silver-plated 450 or nickel-plated 450N), with quality bladder pads.

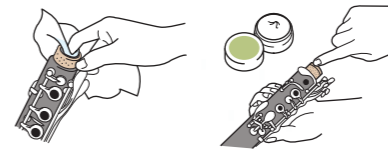
The YCL-450 comes in a convenient lightweight case with backpack straps and a compartment for music.

Specifications

- Grenadilla body
- 17 keys, 6 (5+1) rings
- Silver-plated keys (YCL-450)
- Nickel-plated keys (YCL-450N)
- Bladder pads
- Yamaha 4C mouthpiece
- CLC-400E lightweight case with backpack straps
- YCL-450E/NE features a left-Eb lever

Maintenance

Cork Grease facilitates attaching joints, prolongs cork life, and maintains air seal. It comes available in both hard and soft types. **Cleaning Swab** should be used to remove dirt and moisture from inside the instrument after every use.



Cleaning Accessories



Case



Saxophones

New Models

Yamaha's new 200 and 400 Series Saxophones are a perfect introduction into the world of saxophone playing. Offering surprisingly high-quality features, they are lightweight yet durable and have a pro-quality sound.



YAS/YTS-280 Lightweight with the beginner in mind

The YAS/YTS-280 saxophones offer a perfect start because they are designed with the young beginner in mind. Relatively lightweight and ergonomically shaped, they are easy to hold and to play. The intonation is perfect, as you would expect from Yamaha, and it is easy to get a great sound. The Yamaha design offers beginners optimum support, thus greatly assisting both learning progress and creativity.

Based on the highly recommended YAS/YTS-275 saxophones the new YAS/YTS-280 are even further enhanced with a new, more stable neck receiver and a new low B-C# connection for better adjustment.

Specifications

- High-F#
- Front-F
- Adjustable thumb hook
- Keys gold lacquered
- Body gold lacquered
- New neck receiver (475 style)
- Improved low B-C# connection
- Mouthpiece: 4C
- ASC/TSC-200EII light case (back pack style)
- Silver-plated (YAS/YTS-280S)



YAS/YTS-480 A step ahead

The YAS/YTS-480 saxophones are a step ahead. With a little bit more resistance, they have an authoritative sound yet a great flexibility due to the separated key guards.

Ergonomics, playability and intonation are excellent as you would expect from Yamaha.

Based on the popular YAS/YTS-475 the new YAS/YTS-480 saxophones feature an improved low B-C# connection for better adjustment while the new octave key system (from the 62 Series) facilitates the use of custom necks.

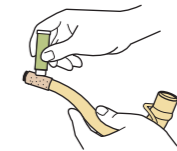
Specifications

- High-F#
- Front-F in tear-drop style
- Seesaw mechanism
- Keys gold lacquered
- Body gold lacquered
- Separated key guards
- New octave key (like 62, compatible with upper models)
- Improved low B-C# connection
- Mouthpiece: 4C
- ASC/TSC-400EII light case (back pack style)
- Silver-plated (YAS/YTS-480S)



Maintenance

Cork Grease facilitates attaching joints, prolongs cork life, and maintains air seal. It comes available in both hard and soft types. **Monster Swab** should be used to remove dirt and moisture from inside the instrument after every use.



Cleaning Accessories



Cases



ASC-200E



ASC-200E



TSC-200E



TSC-200E

Trumpets

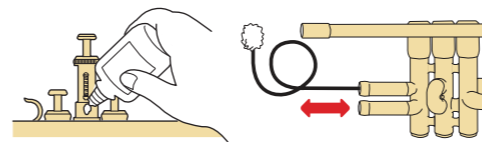
New Models

Yamaha's new series of trumpets benefit from a completely redesigned bell which is based on the needs of all students. Research has taught us that this lighter bell, with an even thickness, is ideal. It results in a very easy response and produces a good sound right from the start.



Maintenance

Valve Oil is especially formulated to give piston valves fast smooth action. **Flexible Cleaners** have a brush on the end of plastic coated flexible wire for cleaning hard-to-reach tubing and crooks. **Brass Soap** is a neutral detergent specifically developed for cleaning inside brass instruments.



Cleaning Accessories

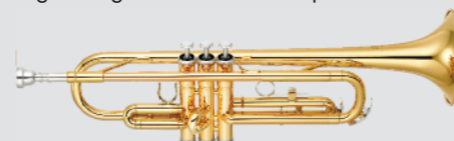


Cases



YTR-2330

Lightweight model for the perfect start



The YTR-2330 trumpet is the perfect starter instrument for students. The main focus for the design was on a light and easy to play trumpet with a great sound and perfect intonation. Yamaha design instruments with an emphasis on the ergonomics so that they offer beginners optimum support thereby greatly assisting learning, progress and creativity.

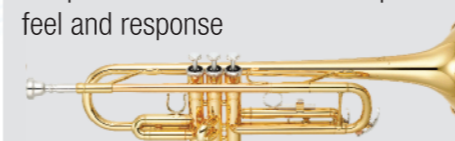
To help create a lighter instrument, the YTR-2330 has been designed without a brace on the main tuning slide and benefits from the ideal thickness two-piece yellow brass bell. The monel alloy pistons are well known for their good, consistent action and minimise the need for maintenance.

Specifications

- No brace on the main tuning slide
- Ideal bell thickness
- Two-piece yellow brass bell
- Monel alloy pistons
- New valve caps and buttons
- Adjustable 3rd slide trigger
- Bore Size - ML 11.65mm (0.459")
- Mouthpiece: TR11B4
- Case: TRC-100EII (Back pack Style)
- Silver plated finish: YTR-2330S

YTR-3335

Unique reversed model for exceptional feel and response



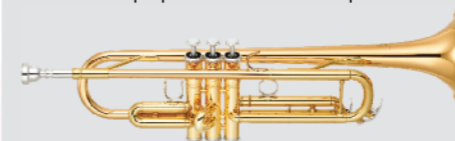
For the first time Yamaha has designed a student trumpet with a reversed main tuning slide allowing for an exceptional feel and response. The YTR-3335 has the addition of a brace on the main tuning slide for a more stable and solid sound. The newly designed two-piece yellow brass bell has the perfect parameter for the needs of a student. It has a light response and the ideal thickness of two-piece yellow brass bell making it easy for students to get started and develop a brilliant tone.

Specifications

- Reversed main tuning slide
- Brace on the main tuning slide
- Ideal bell thickness
- Two-piece yellow brass bell
- Monel alloy pistons
- New valve caps and buttons
- Adjustable 3rd slide trigger
- Bore Size - ML 11.65mm (0.459")
- Mouthpiece: TR11B4
- Case: TRC-201E/02 (Back pack Style)
- Silver plated finish: YTR-3335S

YTR-4335GII

Our most popular model - improved



Keeping the same basic design of the hugely successful YTR-4335G, the new version offers some real improvements in terms of playability and a more powerful sound. The 4000 series now comes with a modified two-piece gold brass bell with a thickness of metal that has improved both sound and playability. Newly designed heavier valve caps and buttons give the trumpet more projection and power.

Available also as convertible Type with extra slides Bb to C and Yellow Brass Bell as YTR-4435II



Specifications

- Brace on the main tuning slide
- Ideal bell thickness
- Two-piece gold brass bell
- Monel alloy pistons
- New valve caps and buttons
- Fixed 3rd slide trigger
- Bore Size - ML 11.65mm (0.459")
- Mouthpiece: TR11B4
- Case: TRC-400EII (Back pack Style)
- Silver plated finish: YTR-4335GS II
- YTR-4435II/4435IIS (Case: TRC-4435)

Cornets

New Models

Silent Brass System SB7-9
Can be used with these Cornets



YCR-2610SIII



The Eb-Cornet YCR-2610SIII offers a brilliant, clear and warm tone with exceptional response and intonation. The new YCR-2610SIII offers players security in the high register and benefits from new heavier valve caps and buttons that gives players improved projection.

Specifications

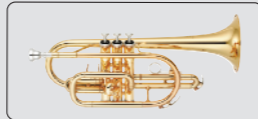
- Ideal bell thickness
- Two-piece yellow brass bell
- Monel alloy pistons
- New valve caps and buttons
- Adjustable 3rd slide trigger
- Mouthpiece: CR7D4d
- Case: CRC-2610I

YCR-2310III and YCR-2330III



We have kept the basic design of the hugely successful YCR-2330 and YCR-2310 cornets and added some modifications. The new ML-bore size helps the beginner to get a quick and easy response. Now benefiting from a modified two-piece yellow brass bell 2000 series cornets have the ideal thickness brass bells and a round lead-pipe for improved sound and playability. The 2000 series also benefits from newly designed heavier valve caps offering a full sound and great projection.

Long type model YCR-2310III



Specifications

- New round shape lead-pipe
- Ideal bell thickness
- Two-piece yellow brass bell
- Monel alloy pistons
- New valve caps and buttons
- Adjustable 3rd slide trigger
- New bore size - ML 11.65mm (0.459")
- Mouthpiece YCR-2310III: CR11C4(S)
- Mouthpiece YCR-2330III: CR11E4(L)
- Case: CRC-2310III & CRC-2330III
- Silver plated finish: YCR-2310SIII YCR-2330SIII

YCR-4330GII



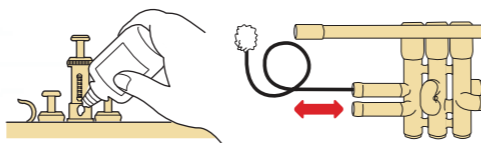
A new design for our long-term student cornet which includes a newly designed rounded leadpipe, in combination with an ML-bore, offers the typical cornet sound with a very easy response. Also the modified two-piece gold brass bell with ideal thickness enables the player to create a round and warm tone.

Specifications

- New round shape lead-pipe
- Ideal bell thickness
- Two-piece gold brass bell
- Monel alloy pistons
- New valve caps and buttons
- Fixed 3rd slide trigger
- New bore size - ML 11.65mm (0.459")
- Mouthpiece: CR11E4(S)
- Case: CRC-4330II
- Silver plated finish: YCR-4330GSIII

Maintenance

Valve Oil is especially formulated to give piston valves fast smooth action. **Flexible Cleaners** have a brush on the end of plastic coated flexible wire for cleaning hard-to-reach tubing and crooks. **Brass Soap** is a neutral detergent specifically developed for cleaning inside brass instruments.



Valve Oil and Cleaning Accessories



French Horns

Start with the traditional warm French horn sound.

YHR-314



The YHR-314II is a single horn and preferred for beginners because of its weight, easy response and accurate intonation. It's pitched in F for a traditional warm French horn sound. Thanks to its easy playability, young students will sound good sooner, and they will find that its lightweight design makes it comfortable to hold and play.

YHR-320



This French horn is pitched in Bb and offers effortless playing especially in the high-register. The lightweight design and the good balance making it easy for students to start on a frenchhorn. The established string lever action and a Rucksack Style case complements this popular model.

YHR-322II



The YHR-322II is pitched in Bb and features a rich, clear tone and well centered notes. It provides security and comfort in the mid-to-upper range without sacrificing any sound in the lower register. The comfortable weight and balance, as well as accurate intonation and immediate response, make this an ideal horn for young beginners. An A+ stop valve is included to eliminate the need to transpose during stopped passages.

YHR-567

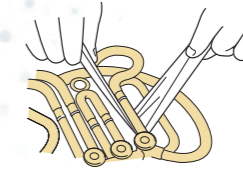


The YHR-567 is a full double horn with a basic design similar to some of our professional models. It's easy response and sure note centering make it ideal for students – while it's colourful tone and precise intonation make it also attractive to the advanced player. This instrument was created with the player in mind, even down to the smallest components. This instrument can take the player to a very high level with ease.

Model	Key	Bore	Bell Type	Material	Lever Action	Mouthpiece	Case
YHR-314	F	12mm (0.472")	fixed	Yellow brass	String	32C4	Lightweight Hard case
YHR-320	Bb	12mm (0.472")	fixed	Yellow brass	Mechanical	32C4	Rucksack Style case
YHR-322II	Bb (A+)	12mm (0.472")	fixed	Yellow brass	String	32C4	Lightweight Hard case
YHR-567	F/Bb	12mm (0.472")	fixed	Yellow brass	String	32C4	Lightweight Hard case
YHR-567D	F/Bb	12mm (0.472")	Detachable	Yellow brass	String	32C4	Lightweight Hard case

Maintenance

Polishes restore the luster to instrument finishes: **Lacquer Polish**, **Silver Polish**, and **Metal Polish** (for nickel-plated or un-plated surfaces).



Cleaning Accessories



Silent Brass System SB5-9
Can be used with these French Horns



Trombones

Yamaha Student Trombones are highly regarded by players of all ability levels. Even top artists have commented that they are very close to pro trombones in quality, whilst being much easier for beginners to play.



YSL-350C



YSL-354E



YSL-356GE

Silent Brass System SB5-9
Can be used with these Trombones



YSL-350C Compact Trombone

Many children are fascinated by the trombone. It has a strong and pleasing tone which can slide smoothly from note to note, and it's visually exciting - it looks fun! But unlike most other instruments, the trombone cannot be played by small children as they just can't stretch their arms far enough to play all the slide positions. That's why Yamaha created the YSL-350C which is not only shorter but has considerably improved balance, making it easier and comfortable to hold because of the adjustable thumb button and finger ring. Due to the normal size bell the YSL-350C has a big sound as other Yamaha Student models and you won't outgrow the instrument.

How it works: The secret is the ascending valve. When played "open" the trombone uses the full length of Bb tubing. When the lever is pressed the key of the instrument ascends a step, which eliminates the need for 6th and 7th slide positions.

Specifications

- Key : Bb/C
- Adjustable thumb button and finger ring
- Bell material: Goldbrass
- Outer slide: Yellow brass
- Inner slide: Nickel silver
- Dual Bore: 12.7-13.34 mm
- Mouthpiece: 48
- Hard case: SLC-220

YSL-354 / YSL-356GE

Great sound and easy to play, this trombones are ideal for new musicians.

The YSL-354E and YSL-356GE are the ideal instruments for the beginner as they are designed to make it easier to sound good...and as soon as possible. For this, the slide action needs to be smooth with a quick response and comfortable playability that is consistent with almost any dynamic. Yamaha's exacting tolerance specifications and high quality material selection are known to be the best slides in the business. Both models are free blowing and durable trombones which offer a perfect entry into the world of music.

The YSL-356GE features Yamaha's original wrap for the F-attachment, which is characterised by a surprisingly open, free-blowing response, and by remarkably smooth valve action. Players are more comfortable playing Yamaha trombones because its superb weight distributions makes it easier to hold.

Features

	Tenor Trombone	Tenor Trombone with F-Attachment
Model No	YSL-354E	YSL-356GE
Bell material	Yellow Brass	Goldbrass
Bore	M 12.7mm	Dual M 12.7-13.34 mm
Slide material	Nickel Silver	Nickel Silver
Mouthpiece Shank	small	small
Mouthpiece	48	48
Case	SLC-200	SLC-210

YSL-445GE / YSL-446GE

YSL-447GE / YSL-448GE

A brilliant step up.

The first time a player starts to play the trombone they need all the help they can get - for that the slide action is smooth and the quick response and comfortable playability is consistent in almost any register, at almost any dynamic. The models of Yamaha's 400 Series of Trombones benefit from a gold brass bell for a warm, rich sound which can fill a concert hall.

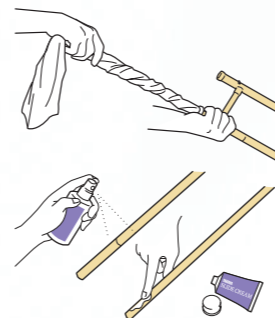
The YSL-446GE and YSL-448GE feature Yamaha's original wrap for the F-attachment, which is characterised by a surprisingly open, free-blowing response, and by remarkably smooth valve action. Players are more comfortable playing Yamaha trombones because its superb weight distributions makes it easier to hold.

Features

	Tenor Trombone		Tenor Trombone with F-Attachment	
Model No	YSL-445GE	YSL-447GE	YSL-446GE	YSL-448GE
Bell material	Goldbrass	Goldbrass	Goldbrass	Goldbrass
Bore	ML 13.34mm	L 13.89 mm	ML 13.34mm	L 13.89mm
Slide material	Nickel Silver	Nickel Silver	Nickel Silver	Nickel Silver
Mouthpiece Shank	small	large	small	large
Mouthpiece	48	48L	48	48L
Case	SLC-210	SLC-210	SLC-210	SLC-210

Maintenance

Polishing Gauze (size L) wrapped around a cleaning rod removes dirt and moisture from trombone slides. **Slide Cream** should be applied to the stockings of a trombone's inner slides, then a **Water Spray** used for smooth action and air-tight seal. A few drops of **Slide Oil** should be applied to the inner slides. When the slide movement gets heavy, spray with a **Water Spray**.



Cleaning Accessories



Tenor Trombone



Tenor Trombone with F-Attachment



Euphonium

Tuba

YEP-201

The Sound of Greatness...

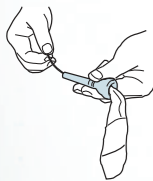
The Euphonium YEP-201 is the "Lightweight" in the low Brass Section. It should not be missed within every ensemble as it is also the perfect instrument for even the youngest players to start carefree in this range. The YEP-201 is lighter weight than more advanced models making it easier to hold and play, but still features a big full sound, and easy response.

Specifications

- Bore : 14.5mm (0.571")
- Bell size: 280mm (11")
- Bell Material : Yellow brass
- Valves : 3 Valves top action
- Mouthpiece: 48
- Case: EPC-35
- silver plated finish : YEP-201S

Maintenance

Cleaning Swab and Mouthpiece Swab should be used to remove dirt and moisture from inside the instruments, slide and mouthpieces.



Cleaning Accessories



Cleaning Swab (TR, SL, HR, EP, TUBA)



Mouthpiece Swab (S, M, L)



Valve Trough for Euphonium for YEP-201 and YEP-321



Replacable moisture trap

Silent Brass System SB2-9
Can be used with this Euphonium

Silent BRASS



YBB-105

A Solid Foundation for Fine Music

The YBB-105 is an excellent choice for younger players. Its lightweight construction and smaller size makes this the ideal tuba for beginning players. With impeccable intonation, plus ideal weight and balance, the YBB-105 Bb Tuba provide the perfect chordal foundation for any ensemble.

Specifications

- Bore : 16.8mm (0.661")
- Bell size: 366mm (14-3/8")
- Bell Material : Yellow brass
- Valves : 3 Valves top action
- Mouthpiece: 67
- Case: BBC-27
- silver plated finish : YBB-105S

Silent Brass System SB1-9
Can be used with this Tuba

Silent BRASS



Concert Percussion

Yamaha's product variety ensures that you find all the great quality percussion instruments you need for your wind band or orchestra.

Snare Drum



KSD-255

This light weight snare drum provides players with clear articulation and a bright character, typical of high carbon steel coil snares. Its inner-mute and 10 high-tension lugs make this drum ideal for beginners. Stand : SS745A

Bass Drum



CB-628B

The CB-628B concert bass drum comes in a beautiful black finish, and has an 8 ply birch-mahogany shell providing a deep bass sound. Tuning can be easily carried out with the supplied tuning key. Stand : BS751 (BS510)

Kit Drums

GIGMAKER GM2F5

Gigmaker drum sets are available in two configurations and are available in a range of colourful sparkle finishes to match your musical and visual style. These high-quality sets come with a matching snare drum and Yamaha double-braced hardware, as well as matching wood hoops for the bass drum.

Timpani



TP-3100EA Series

With an aluminium bowl, the TP-3100EA series provides players with an extremely light weight instrument with a professional sound. Benefiting from collapsible feet and pedal for easy transportation, TP-3100EA timpani are supplied with Yamaha-Remo Renaissance skins as standard.



Glockenspiel



YG-250D

The YG250D is a portable glockenspiel complete with a case for easy transportation. With bars made from high-carbon steel, the YG250D provides players with an authentic, brilliant sound. Stand: YGS70

Xylophone

YX-135

The YX-135 xylophone has a collapsible stand making it easy to transport. Carefully selected and matched, the tone-bars are made from African-Paduk, and provide players with a professional sounding instrument.



YAMAHA

String Instruments

Excellent Quality for Young Players

An excellent choice for beginners to intermediate players. Each instrument is hand crafted utilising the same traditional methods as those used on high-end violins.



The instruments are all supplied with a case, bow and rosin.

Violin



V5SA (V5SC)

Perfect for the beginner, the V5SC features a spruce top, maple back and neck and is made from high quality materials. V5 series are available in many sizes to suit even the youngest player.

All models of V5 series include a hard case, bow and rosin.

V5SA
Available in 4/4, 3/4, 1/2, 1/4, 1/8, 1/10 and 1/16 sizes.

V5SC: with Wittner tailpiece
Available in 4/4, 3/4, 1/2, 1/4 and 1/8 sizes.



V7SG

Handcrafted from selected natural woods, the V7G is the ideal instrument for intermediate players. Each instrument is carefully handcrafted and finished with a special oil varnish shading that offers a lustrous appearance. The lightweight tailpiece also features four fine tuners that provide first time players with the ease of use they need as they start playing. V7SG comes with a hard case, bow, and rosin.

The V7SG is available in 4/4 and 3/4 sizes.

Viola



VA5S

Handcrafted from carefully selected materials, Yamaha student violas have an outstanding tone, quality and features that are usually found on instruments that are more expensive. These instruments are an excellent choice for students, providing them with a quality instrument that will get them off to a great start. VA5S comes with a hard case, bow, and rosin.

Available in 14", 15", 15.5", 16", and 16.5" sizes.



VA7SG

The VA7SG has a beautiful warm sound with abundant tonal colors, and is perfect as a step-up instrument for improving students or for doublers. Similar to the V7SG, the VA7SG is finished with a special oil varnish shading that offers a lustrous appearance and comes complete with a Wittner "Ultra" Tailpiece and an Aubert type bridge. The VA7SG violas come with a hard case, bow, and rosin.

Available sizes: in 15", 15.5", 16" and 16.5".

Cello



VC5S

The VC5S cello offers the same warm sound and excellent value as the V5 violins. They are made of high quality materials and are individually hand finished by craftsmen. By using traditional methods of craftsmanship often associated with high-end stringed instruments, these are high quality cellos that can inspire the student to new levels of musicality. VC5S comes with a soft case, bow, and rosin.

Available sizes: 1/4, 1/2, 3/4, and full size.

Carbon Bow

CBB101



Yamaha Carbon-bows offer the optimum combination of strength, flexibility, natural playability and great balance. By using carbon fiber materials, these bows are not affected by changes in the weather or by humidity.

Silent Violin



SILENT *Violin*

SV150

The SV150 is a revolutionary instrument that allows you to play anywhere and at any time. An advanced design reduces the weight of the SV150 to that of an acoustic violin for unmatched playability and comfort. Refined circuitry allows the SV150 to deliver an extraordinarily lifelike violin tone whilst state-of-the-art digital technology gives you a selection of 24 top-quality effects as well as a built-in precision tuner, metronome, and digital audio playback capability (SD card reader for MP3, AAC, Wave or MIDI). The SV-150 can take your practice - and performance - to the next level.

Pianica and Recorders

Pianica



This high grade Keyboard instrument is designed especially for young musicians. In Japan every child starts their musical life on a Pianica and the P32D, with its tone range from f to c3 (32 keys) in a light blue colour, is one of the most popular models.

Recorders

A perfect musical foundation...

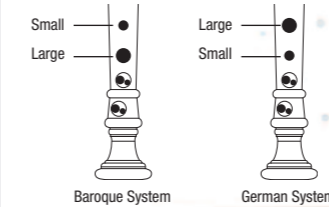
Yamaha's 20 and 30 Series recorders are designed to provide a perfect start to anyone's musical education. They offer an ideal amount of air resistance for easy control, and feature an accuracy of intonation you would expect to find only on more expensive models. Though other maker's plastic recorders may have a similar appearance, Yamaha ABS recorders are truly superior instruments. Models are available with either 'German' or 'Baroque' fingering systems. The 20 series, easy to play throughout their ranges, are primarily intended for beginners. 30 series recorders, which feature an arched windway for improved breath control and tonal expression, are for more advanced players.

If you are serious about your music

The 300 series offers a complete range of top quality recorders - from soprano to bass. All these instruments deliver a rich body of sound, while providing the convenience of durable, maintenance-free ABS resin. Because of the range of their tonal expression and their superb playability, these recorders are fully competitive with more expensive wooden models. They come in a variety of styles, some offering simulated wood finishes.

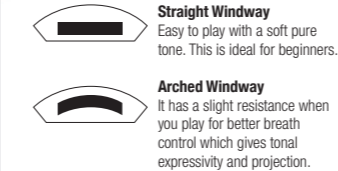
Fingering Systems

Yamaha offers a choice of either "Baroque" or "German" fingering systems on many models to accommodate local preferences and traditions.



Windway Shapes

There are two different windways: arched and straight.



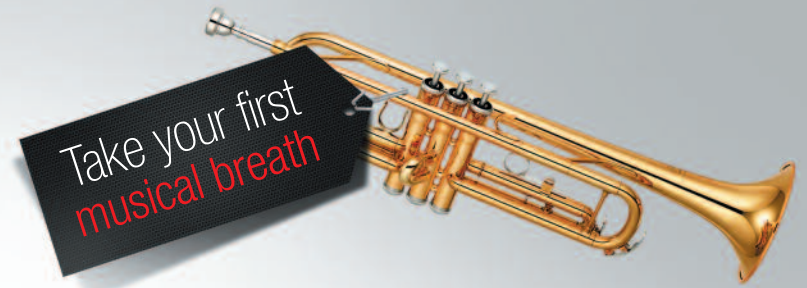
20 series features straight windway while 30 series and 300 series features arched windway. 300 series with hollow headjoint for superior sound and response.



Soprano YRN 302BII, Sopran YRS 302BII, Alt YRA 302BIII, Tenor YRT 304BII, Bass YRB 302BII, Sopran YRS 24B, Sopran YRS 311III, Sopran YRS 31



10 Reasons to choose Yamaha



1

Quality

The craftsmanship, intonation and sound of our instruments set standards worldwide. They also represent excellent value for money.

2

Commitment to the Environment

The introduction of sustainable production processes is one of our basic principles. Health and the environment are important to us. Yamaha is the only manufacturer whose instruments are produced without using lead.

3

Lasting Value

Over decades Yamaha has consistently positioned its products as high-quality brand items. As a market leader, Yamaha will continue to be the driving force behind innovations.

4

User-Friendliness

Yamaha designs and builds its instruments ergonomically so that they offer musicians optimum support, thus greatly assisting both learning progress and creativity.

5

Technical Service

Yamaha and its authorised dealers offer you the best possible service from a partner with a global presence. By providing musicians with technical expertise and original replacement parts, we offer that "extra" security.

6

Research & Development

Yamaha is the only manufacturer in the world that uses specialised developers for each instrument in its product range and maintains an international network of Research & Development workshops.

7

Product Variety

Thanks to the wide range of instruments that Yamaha develops, everything originates from a single source. This means you always have the right instrument for your personal needs - and always in the best Yamaha quality.

8

Talent Promotion

Yamaha promotes musical culture - permanently and practically. The Yamaha Music Foundation of Europe awards grants every year to music conservatory students with various areas of specialisation.

9

Leaders in Education

Yamaha developed their own pedagogic music school system targeting the enjoyment of making music together in a group. More than 5,000,000 students started their musical life at a Yamaha Music School.

10

ClassBand

A school class becomes a symphonic wind band: this is an experience enjoyed by secondary school students at over 1,300 Yamaha ClassBands to date. Students learn to play an orchestral wind instrument within their normal class. Orchestra rehearsals and group performances create very special musical and social events.

