



46-Blue Sparkle
(Custom order color)

Shells
BBD1524T
BTT1512U
BFT1515U
BFT1518
BSD0547

Hardware
HS1000
CS845 x6
SS940
DFP9410
CL9491A
HSAT930
DSM100

9-Red Pearl Natural

Shells
ABD1122
ATT1108J
ATT1110U
ATT1112U
ATT1114
ATT1116
ASD0145

Additional
TB1030AA
TB1230AA

Hardware
TH945A
HS1000
CS845 x3
SS940
DFP9410
CH745 x2
CHH920

WS904
WS865
CL945A x2
CSAT926
HSAT930
DS1100

SNARE DRUMS

Shell : Maple, Birch-6ply (6mm)
Beech-6ply (7.5mm)

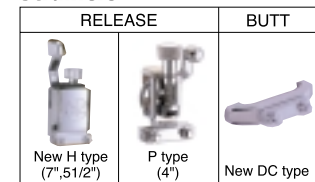
Rim : Aluminum Die-cast (3.0mm)
with 10 holes (8 holes on 13")

Bottom Snare :
Short / Hi-carbon steel (clear finish)
25 strands (7"), 20 strands (5 1/2", 4")

Head : Batter - Remo Ambassador Coated
Batter - Remo Ambassador Snare

Strainer :
Release side - New H type (7", 5 1/2"), P type (4")
Butt side - New DC type

Strainers



ASD0534 13"×4"
ASD0535 13"×5 1/2"
ASD0544 14"×4"
ASD0545 14"×5 1/2"
ASD0547 14"×7"

Absolute Nouveau Lug Model : SD0534(13"×4"), SD0535(13"×5 1/2"), SD0544(14"×4"), SD0545(14"×5 1/2"), SD0547(14"×7")
Absolute Lug Model : SD0135(13"×5 1/2"), SD0145(14"×5 1/2"), SD0147(14"×7") ...Material types A(Maple), B(Birch), W(Beech)

UV Finishes

Along with 11 regular color finishes, the new Absolute Series is available in an additional 34 different color finishes. The series also uses UV cured finishes that are not available anywhere else. These new finishes control discoloration and offer depth and brilliance that is distinctively different from all other finishes. Yamaha has also developed new finishing techniques that deliver brilliant sparkle colors and textured finishes that until now, had to be applied with wraps. In addition to the new finishes, you can choose from some unique coverings that are also available.

* Refer to the "Custom Order Color List" leaflet for information on colors other than the regular colors.

COLOR FINISHES (REGULAR COLORS)



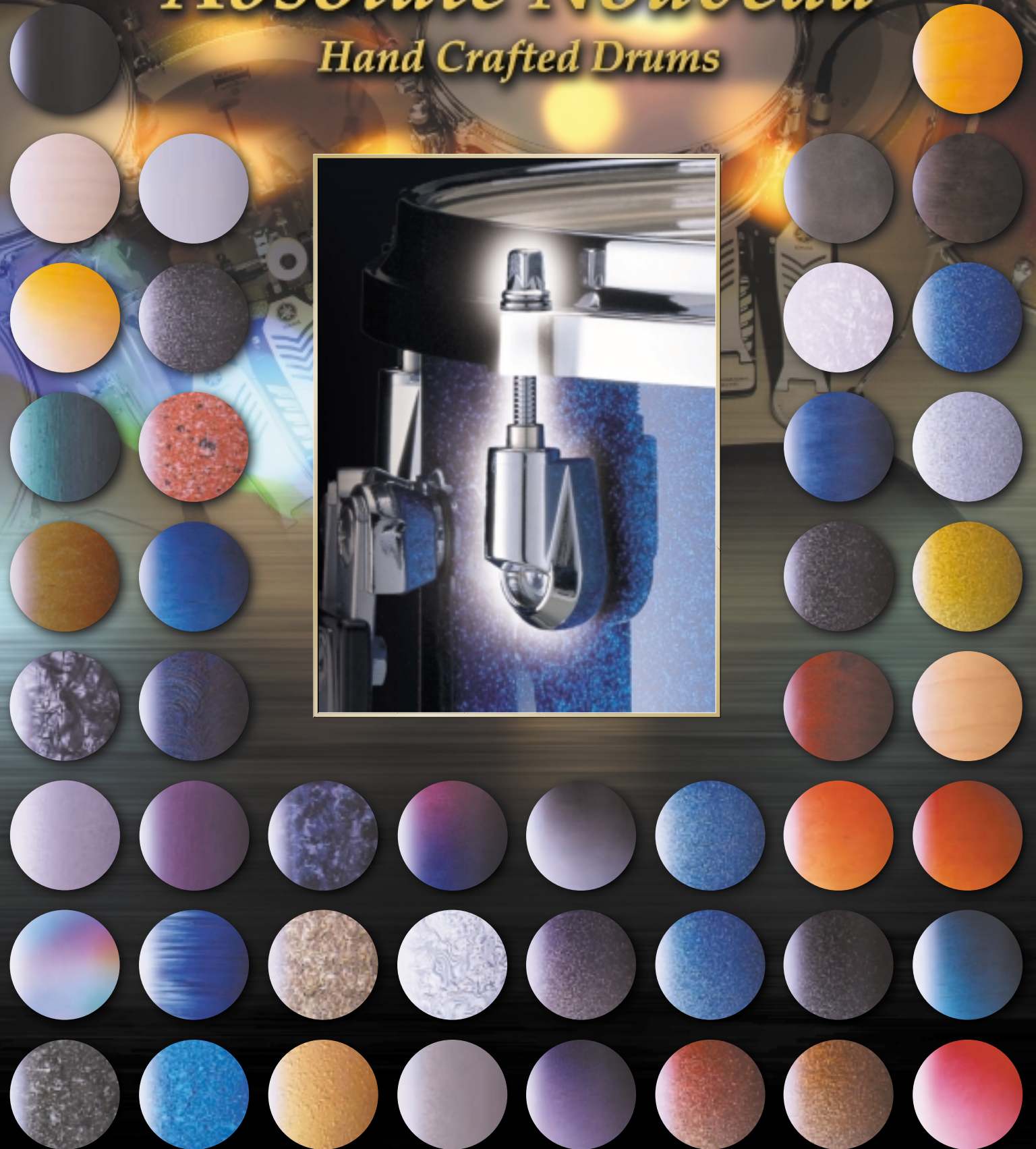
1-VN: Vintage Natural 2-VB: Vintage Black 3-HY: Honey Yellow 4-CW: Cherry Wood 5-SBU: Sea Blue 6-SOB: Solid Black 7-SLS: Silver Sparkle 8-BLP: Black Sparkle 9-RPN: Red Pearl Natural 10-WHM: White Mica 11-WMP: White Marine Pearl (Covered finish)

The following are used to denote material types. A (Maple) B (Birch) W (Beech)

Components	Bass Drums				Mounted Toms								Floor Toms				
	Diameter	24"	22"	20"	18"	16"	15"	14"	13"	12"	10"	8"	18"	16"	15"	14"	13"
Absolute Nouveau Lug Model	Standard Size	-	14" □BD1522J	14" □BD1520J	14" □BD1518JF	-	-	10" □TT1514J	9" □TT1513J	8" □TT1512J	7 1/2" □TT1510J	7" □TT1508J	-	-	-	-	-
	Universal Size	-	-	-	-	-	-	10" □TT1513U	9" □TT1512U	8" □TT1510U	-	-	14" □FT1516U	14" □FT1515U	-	14" □FT1513U	-
	Power Size	16" □BD1524	16" □BD1522	16" □BD1520	16" □BD1518F	14" □TT1516	13" □TT1515	12" □TT1514	11" □TT1513	10" □TT1512	9" □TT1510	8" □TT1508	16" □FT1518	16" □FT1516	-	14" □FT1514	-
	Turbo Size	18" □BD1524T	18" □BD1522T	18" □BD1520T	-	-	-	-	-	-	-	-	-	-	-	-	-
Absolute Lug Model	Standard Size	-	14" □BD1122J	14" □BD1120J	14" □BD1118JF	-	-	10" □TT1114J	9" □TT1113J	8" □TT1112J	7 1/2" □TT1110J	7" □TT1108J	-	-	-	-	-
	Universal Size	-	-	-	-	-	-	10" □TT1113U	9" □TT1112U	8" □TT1110U	-	-	14" □FT1116U	14" □FT1115U	-	14" □FT1113U	-
	Power Size	16" □BD1124	16" □BD1122	16" □BD1120	16" □BD1118F	14" □TT1116	13" □TT1115	12" □TT1114	11" □TT1113	10" □TT1112	9" □TT1110	8" □TT1108	16" □FT1118	16" □FT1116	-	14" □FT1114	-
	Turbo Size	18" □BD1124T	18" □BD1122T	18" □BD1120T	-	-	-	-	-	-	-	-	-	-	-	-	-
Tuning Bolts	10	10	10	8	8	8	8	6	6	6	5	8	8	8	8	8	6
Hoops	Wood, 18" only Floating Design																
Head	Top	Remo Power Stroke P4 Clear								Aluminum Die-cast (3.0mm)							
	Bottom	Remo Ebony Power Stroke P3 (Front)								Remo Clear Ambassador							

*Some models may not be available in some countries.
*Colors shown in this catalog may not be represented exactly as the original colors due to printing processes involved.
*Specifications are subject to change without notice.

Absolute Nouveau
Hand Crafted Drums



28-Apple Sparkle Fade
(Custom Order Color)

Shells
ABD1520T
ABD1522T
ATT1510U
ATT1512U
ATT1513U
AFT1516
AFT1518
ASD054S

Additional
TB1030AA
TB1230AA
RMCW
RMCW

Hardware
TH945A x2
HS1100
CS845
SS940
DFP9410
FP9410
CH745 x4
CH740 x3
TH904
WHS960S
WS965 x2
AC910
CWH930
HSAT930



3-Honey Yellow

Shells
ABD1122
AFT1114
AFT1116
AFT1113U
AFT1115U
ATT1110U
ATT1112U
ATT1113U
ASD014S

Hardware
TH945A
HS1000
CS845 x5
SS940
DFP9410
WS955 x2
CH745 x3
HSAT930
DSM100

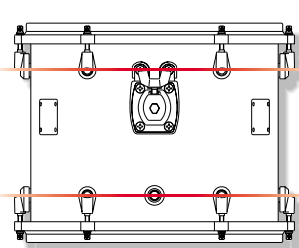


Absolute Nouveau Lug

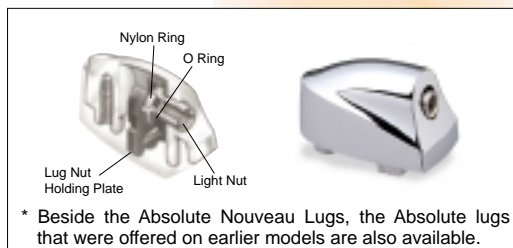
In taking an entirely fresh approach to lug design, our craftsmen have come up with an ideal design that delivers greater sound performance and convenience. These new lugs hook onto bolts that are attached to the shell, which allows the lug casings themselves to "float" eliminating any direct contact between the lug and the shell. As this design reduces the amount of hardware actually attached to the drum shell, the shell is allowed to vibrate freely. On an 11-inch shell the lug bolts, as well as the YESS mounting system, are all attached to the shell at its nodal point to greatly minimize influence on shell resonance to deliver maximum tone.

Another benefit these lugs provide is when it comes time to change the head, it is no longer necessary to remove the tuning bolts from the lugs to remove the hoop. Just loosen the bolts enough to slide the lugs off of the bolts and the hoop comes right off. No more lost washers, etc. and head changes can be done quicker and easier than before.

* Nodal point mounting is patented by the Nobel & Cooley Drum Company.



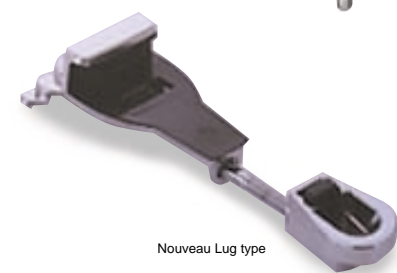
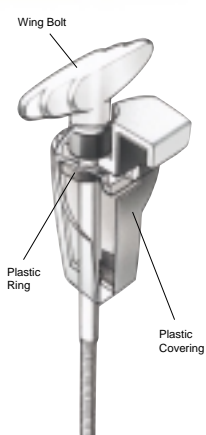
Air hole, YESS and bolts on the shell side are all positioned at the shell's nodal point.



* Beside the Absolute Nouveau Lugs, the Absolute lugs that were offered on earlier models are also available.

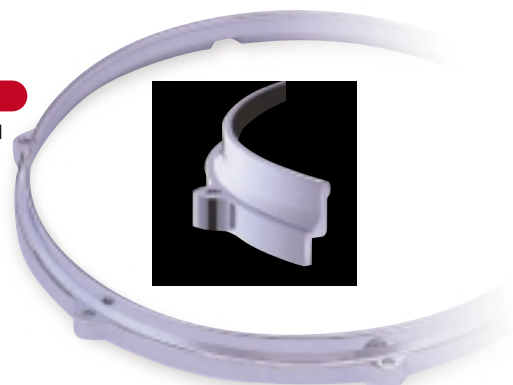
New Bass Drum Claws

The new claw design found on the Absolute drums offers quick tuning, smooth head changes, and noise free performance. The tuning bolt utilizes a wing type bolt that aids in tuning the bass drum. Inside of the newly designed zinc die cast claw is a plastic ring that keeps the bolt from loosening and falling off. The inner side of the claws is given a plastic covering that prevents noise and offers protection to the hoop from damage.



New Aluminum Diecast Hoop

Newly designed aluminum diecast hoops are precision designed to withstand rigorous performance. Aluminium is light in weight and eliminates the high frequency noise (overtones) often found in other materials used in hoop design. These hoops hold the head securely in place, provide less sound loss, and deliver a more open sound with greater focus.



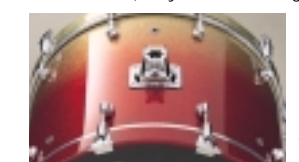
New Bass Drum Legs

New bass drum legs feature larger diameter pipes that deliver increased stability and durability. Height adjustment is easily secured with a tuning key and the spur easily slides out with a slide lever. Even with the bass drum set up you can tell the spur's position by looking at the lever. Along with the increase in pipe diameter, the base section uses the same system for securing as found on our cymbal stands to provide more stable and secure positioning of the legs.



Additional Air Holes

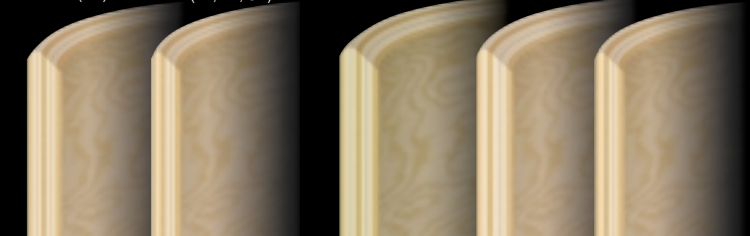
In addition to the single air hole on the top of the shell on the beater side, the Absolute Series provides four more holes around the front end of the shell. The extra air holes allow air to escape smoothly reducing backlash on the beater head as air returns from the front. For the same reason, 16-inch and 18-inch floor tom shells are designed with three air holes instead of the usual one. (Only Nouveau Lug model) Air holes and Nouveau Lugs are all positioned at the shell's nodal point to minimize influence and deliver maximum resonance from the shell.



Three Woods from Which to Choose

Shells in the Absolute Series Drums are available in three different types, Maple, Birch, and Beech. All shells, regardless of the wood type, are created using our exclusive Air Seal System to ensure that each and every shell is perfectly round and of uniform thickness. All shells feature the same ply design but ply thickness varies between the woods to bring out the best of tone and character of each wood.

Maple / Birch			Beech		
7ply (7mm) (BD)	6ply (6mm) (FT, TT, SD)		7ply (8.0mm) (BD)	6ply (7.5mm) (FT, 12"-16"TT, SD)	6ply (6mm) (8", 10"TT)



YESS



Providing minimum mount to shell contact, the Yamaha Enhanced Sustain System (YESS) delivers increased resonance plus maximizes dynamic range and sustain. Mounts are attached at the drum's nodal point* where shell vibration is minimally reduced while a nylon bushing in the rod clamp offers enhanced stability. This system is also used on our floor tom brackets to deliver maximum sustain.



Ball Mount & Clamp

Yamaha's legendary ball mount & clamp has been providing drummers with extremely flexible and stable tom placement for over 20 years. Consisting of a large resin ball and wing bolt, this ingenious system incorporates an internal retaining plate to deliver maximum stability that will withstand the very rigorous performance.



Floating Bass Drum System

A pipe post stabilizer providing height adjustment on the bass drum's pedal side ensures that the beater makes contact at the head's center. The stabilizer fits into a pipe clamp on the underside of the drum and is equipped with a memory clamp for quick and precise setup. A pair of supports provides added stability.





The Absolute series offers a wide selection of shell materials, color finishes, sizes, and lugs from which you can choose to create a custom kit that fit your specific needs



With 45 colors from which to choose, you can create a set of Absolute Drums that truly express yourself.

This enormous selection of colors was chosen from requests and ideas we received from a great many Yamaha Drummers and loyal customers. Some requests, like Charley Drayton's love for pink, were quite notable, and to give ordinary black greater character, we created "Shikkoku Black", which is based on Japanese black—the black found on Yamaha Pianos.

With 45 colors from which to choose, there should be something for everyone. And this will add another pleasure to your drum buying process. Now, along with deciding which bass drum size to go with, and the size of toms you want, you'll also have to make a decision on which color expresses you the best.

Yamaha Handcrafted Drums

Yamaha drums have been around for just over 36 years now, and we have been using our original Air Seal System in the making of our shells from the very start. And what is now common practice among other drum makers—the use of diagonally cut plies—we at Yamaha have been doing for about 30 years now.



Making quality drums involves many processes that require a high level of skill. And it goes without saying that to make a good shell demands a great amount of experience. The shell must be perfect and a perfect shell starts with diagonal cuts made with great precision, along with a great deal of experience in aligning the cut ends of these plies to form the shell.

We should not forget the adhesives. Different drum types require different adhesive mixtures. In countries that have four seasons like Japan, there is no one-does-it-all adhesive, so we vary our adhesive mixture according to changes in temperature and humidity levels. We even go so far as to apply the adhesives at predetermined hours of the day because it is at those times that we can obtain maximum adhesion.

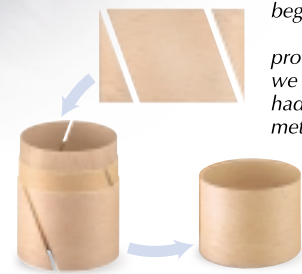
When using high quality woods to make drums, we work hard at being environmentally friendly, and not waste any of the woods so as you can see, the highly skilled craftsman is an essential part in making of perfect drum shells.

In every culture, it is important that the older generation pass the torch onto next generation. Our most important obligation at present is to pass these techniques on to the next generation. Yamaha Drums is a part of a company that has been making pianos for over 100 years. We acquired a great deal of knowledge—how to make the best use of the woods, manufacturing processes, etc.—from our vast experience making pianos. We do not consider our work as “manufacturing”. We take great pride in making drums and our spirit in doing so can not be described with such a simple term as “manufacturing”.

Japan is noted for its wooden structures, some of which are more than 1000 years old. These wooden structures provided us with knowledge and techniques we could use in making drums. In addition to making shells that are perfect, it is important to make shells that are durable. So we keep a picture in our mind of how the drum will sound in ten or twenty years, and use processes and techniques that are sound and stable to create drums with great durability. Drums that will still sound and play great in 10 or 20 years. These are very important factors in the making of Yamaha Drums and we are always looking for consistency in these factors.

Let's move on to the making of the shell. Diagonally cut plies are put into a specially designed jig using a process we call “Kachikomi”. Our veteran craftsmen who perform this process are a little like black belt karate masters who have such control that they can stop their hand just a hair away from the target. Using a large hammer, they pound the wood into the jig with a force that is great but never exceeds what the wood can take—stopping just before to the wood is about to “scream” if you will. They can feel just how much the wood can take and never go beyond that point. Their ability to communicate with the wood in this way always leaves a great impression with visiting Yamaha Drummers and is the most important skill in making Yamaha Drums that must be passed on to the next generation.

For our craftsmen, “Kachikomi” is a race against time. The adhesive is applied to the plies just before they go into the jig so all plies must be put into the jig before the adhesive hardens. This certainly, is where drum making begins.



We took a critical look at many of the other process involved in the making of drums and found we couldn't agree with many of the processes that had been used up to that time. We abandoned the method of bending and attaching 5 or 6 plies with a single seam. Instead, we developed a method where we put a couple of plies into the jig at a time. This is where the diagonally cut plies come into play. Using this method eliminates the need for any reinforcement on the inside of the shell, which was a great innovation in the industry for Yamaha.

Drum making involves many repeated processes. The finish used on Yamaha Drums is described as mirror like. This mirror finish is the result of repeated applications by hand and is done with a hand spray gun. Holding the spray gun in one hand, the craftsman, concentrating intensely on his work, carefully sprays the paint onto the shell. Its like art, watching the paint spread out onto the shell. In our factory, the shell making and finishing processes are the most respected and desired positions.

Those that do the finishing say that they had been constantly thinking about what kind of finish would improve the drum's tone. They finally found that

applying a thin finish in multiple coats and carefully sanding in between each coat was best because applying a thick, single coat impedes shell resonance.

After the shell is carefully finished, it goes on to be waxed and buffed. There is a veteran craftsman in our factory we call Mr. Buffingman, who has been buffing by hand for 20 years. Then the mirror finish drum is complete.

In the history of the drums, we and our Yamaha Drummer friends have come up with many innovative ideas. One of which is Yamaha's System Drums. Taking the big diameter floor toms, we attached them to our Double Tom Stand that we had developed, to create what is commonly known today as the “hanging tom”. We also developed the Ball Joint Tom Holder whose outstanding flexibility expanded the potential of our System Drums.

Yamaha Drums were the first drums that were truly compatible with the new multi-track recording techniques of the 1970's. In 1976, we introduced a wide selection of hanging toms from 6-inches to 16-inches.

The introduction of our Recording Custom Drums opened a new page in the history of the drums and they are still manufactured in the same Japanese factory by the hands of our highly skilled Japanese craftsmen.

We were late in adopting maple as a material for our drums. We received requests for maple drums from some of our closest Yamaha Drummers, some of whom are like family to us. We had been using Japanese birch up to that point so this request gave us a fresh challenge. To be honest thou, we were a bit apprehensive since other makers had been using maple for such a long time and we knew our drummers' expectations were high.

That is what brought about the introduction of our Maple Drums. On the Maple Custom Drums, each lug is attached to the drum shell with a single bolt. Their small, compact size, which reduces the amount of surface contact between the shell and the lug, is a very important element in our Maple Custom Drums. Other places where you can find reduced surface contact is on the snare drum's butt and release side strainers. We are constantly looking for ways to minimize the hindrance of shell resonance.

We found a hint that led to the solution in one of our mallet instruments, the marimba. This hint led us to utilize the shell's nodal point. First, we found that using the smaller lugs alone didn't provide that big of an improvement. For that reason we attached the compact lugs to the shell at the shell's nodal point, the same point at which the string holes on the marimba's tone bars are drilled for attaching the tone bars to the marimba stand.

Next, we enter a period where our small lugs are very popular. And our Maple Custom Drums, as well as our Recording Custom Drums, are widely used in the studio and for performance.

Talking to our drummers, some would tell us that it would be great to have a maple bass drum with birch toms, and others would tell us just the opposite.

To answer such needs, we developed the Absolute Series Drums. With the Absolute Series, you can select the material of your choice from maple, birch, and beech. You can even select different materials for the toms, bass drum, and the snare drum. The Absolute Series Drums are a culmination of our experience in supporting a variety of musical genres.

Just as in our Maple Custom Drums, we utilized compact lugs—this time a more elegant design with graceful lines—attached to the Absolute's shell with a single bolt. Knowing that drummers want stable tuning Yamaha sought out a way to improve tuning stability. A specially designed lug nut with a nylon bushing inserted into the end of the lug nut. It's just a small part but this Yamaha original design delivers stable tuning.

And now we are at the dawn of a new age with the introduction of the Absolute Nouveau. This going to be another turning point in the history of the drum. The idea for the Nouveau Lug came about while thinking about how to make head changes easier. The lug is designed so that by loosening the tuning bolt just halfway, you can remove the lug from the shell. This makes head removal much easier since you no longer have to completely remove all of the tuning bolts. And there is no longer the worry of losing washers.

With the development of the Nouveau Lug, our imagination ran wild. Going back to our roots, we could use the nodal point in attaching all parts. Yes, of course we would utilize this when attaching the Nouveau Lug to our bass drums, as well as all toms, and our YESS System, how about the air holes...

It is very difficult describing tone or sound with words. Every time we touch the Nouveau Lug, we think what best describes this new era in the drum's history.

But we are sure that the Absolute Nouveau will open a new page in the drum's history.

