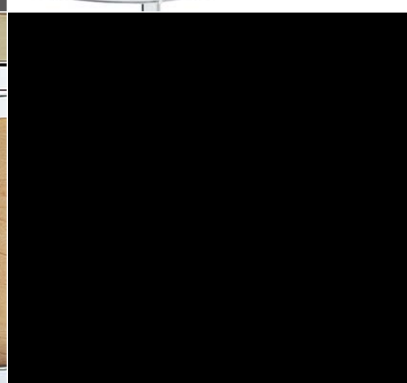
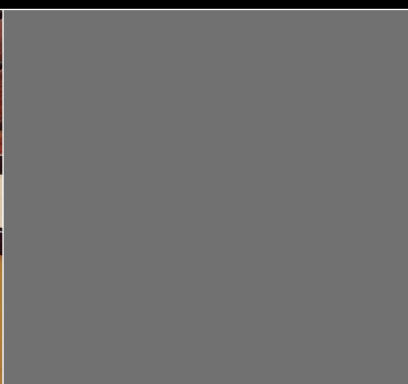




# Concert Percussion





# World Class Percussionists... World Class Percussion

Our artist roster of percussionists is made up of a diverse group that includes principal orchestral percussionists, ensemble percussionists, artists, clinicians and educators. Being able to work with such phenomenal talent is an honour for us. They give us an insight into what they need from their instruments and we develop our instruments to fulfil their needs. They inspire us to go beyond what we “know” we can do, and we help them to go further than they ever thought possible. We all have a strong desire to expand our knowledge and skills. It's what keeps our artists in demand, and what makes our instruments the preferred choice of percussionists around the World.



Mike Mainieri



Dave Samuels



Franck Tortiller



David Friedman



Alfrid Maria Sicking



Stefon Harris



Taiko Saito



Pascal Schumacher



Anders Åstrand



Bart Quartier



Max Raabe & Palast Orchester

# JAZZ

## European Union Youth Orchestra

A Cultural Ambassador for the EU, the European Union Youth Orchestra unites Europe's most talented young musicians under world-class conductors, in an orchestra that transcends cultural boundaries and performs all over the world to the highest international standards. Vladimir Ashkenazy is the Orchestra's Music Director.

The EUYO is composed of up to 140 musicians who are drawn from all 27 European Union countries. Thousands of candidates aged between 14 and 24 audition annually throughout the EU. The experience the EUYO provides for its musicians is invaluable to their future careers: 90% of alumni go on to successful professional careers in music.



Yamaha Music Europe is proud to support the talented young musicians of the European Union Youth Orchestra.

(c) Nicolai Wendelboe



Franz Schindlbeck  
(Berlin Philharmonic Orchestra)



Emmanuel curt  
(Orchestre national de france)



Neil Percy  
(London Symphony Orchestra)



Guido Marggarander  
(Bavarian Radio Symphony Orchestra)



Don Liuzzi  
(The Philadelphia Orchestra)





Keiko Abe



Nebojsa Jovan Zivkovic



Isao Nakamura



Federico Poli



Jean Geoffroy



Momoko Kamiya



Jörg Fabig



Philippe Spiesser



Johannes Fischer



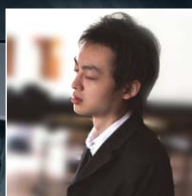
Simone Rebello



Claudio Santangelo



Ney Rosaura



Pius Cheung



Ria Ideta (C) Christian A. Pohl



Radoslaw Szarek



Armando Lorente



Tsuey-Ying Tai



Raphael Christen



PercuDuo



Axoum Duo



TCHIKI duo

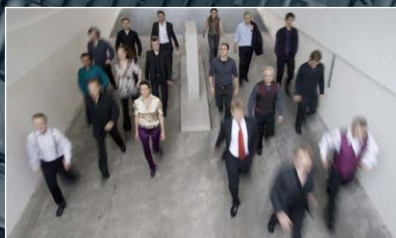
# SOLOIST ORCHESTRA

## CONTENTS

MARIMBAS .....	page 4
VIBRAPHONES .....	page 10
XYLOPHONES .....	page 12
GLOCKENSPIEL .....	page 14
CHIME .....	page 15
KEYBOARD MALLETS .....	page 16
TIMPANI .....	page 18
CONCERT TOMS .....	page 20
SNARE DRUMS .....	page 21
BASS DRUMS .....	page 22



Orchestra of the Royal Opera House Percussion Section



Ensemble Modern

(C) Manu Theobald



Legendary marimbist Keiko Abe has been collaborating with Yamaha for over 40 years. The culmination of this alliance is embodied in the YM 6100 Concert Grand Marimba, a five-octave instrument that represents the ultimate in design, construction, and materials. This impressive marimba features carefully aged and specially selected Rosewood bars cut and tuned by hand, a beautifully crafted, sturdy frame, and exclusive pneumatic height adjustment system.

# MARIMBAS



## YM 6100

Range: 5 octaves, C16-C76  
 Bars: Rosewood  
 Bar sizes: 80-41mm Wide, 25-20mm Thick  
 Pitch: A=442Hz (other pitches available by special order)  
 Resonators: Round, adjustable from C16 to F33  
 Height adjustment: Pneumatic strut system 88-103cm  
 Dimensions (WxD): 272x116cm  
 Weight: 107kg

### Scale Range



Side



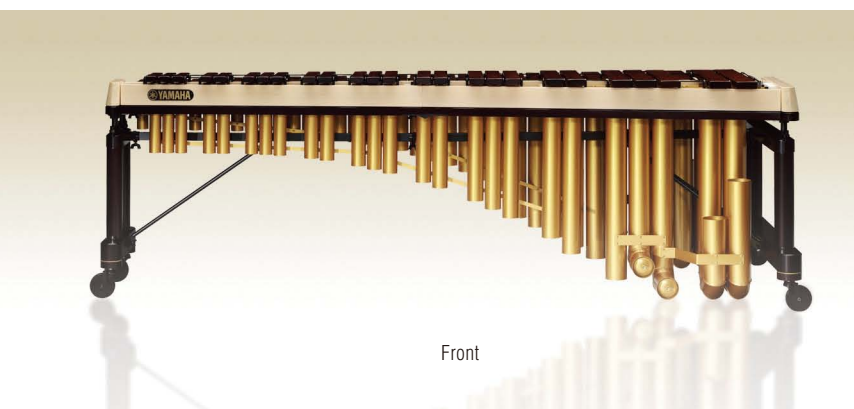
Back



Side



YM6100 is the result of more than 40 years of collaboration between the legendary marimbist Keiko Abe and Yamaha's designers.



Front



Only the most select, top-grade rosewood is used for the YM 6100. Yamaha has developed a unique tuning system to ensure accurate intonation and matched tone.



The unique compressed gas spring support system allows quick and easy height adjustment by a single person. This is especially useful in schools or ensembles where more than one musician will use the same instrument.



The resonators on the lower end of the are adjustable, allowing a well-focused and balanced tone when changes in temperature and humidity occur. You can adjust them quite easily as the resonator tubes face outward allowing for easy access.



The lightweight frames are designed to make transport as easy as possible and can be quickly dismantled and reassembled.



Years of research and development with top artists from around the globe has led to advancements in tuning, bar design, and frame construction that make our marimbas the most sought after in the world. Six models ranging from the 5½-octave YM 5104A to the 4-octave YM 410 offer many of the features found on the YM 6100. Crafted using the finest materials with the best of traditional and modern techniques they deliver rich glowing tone and perfect intonation.

# MARIMBAS



## YM 5104A SPECIAL ORDER

Range: C-g4, 5 1/2 octaves

Bars: Rosewood

Bar sizes: 72-38mm Wide, 24-20mm Thick

Pitch: A=442Hz (other pitches available by special order)

Resonators: Helmholtz (C to F),

Round cornered rectangle (F#-A#)

Height adjustment: Gas spring support system 86-101cm

Dimensions (WxD): 281x103cm

Weight: 99kg

Scale Range



### Easy Height Adjustment

The unique compressed gas spring support system allows quick and easy height adjustment by a single person. This is especially useful in schools or ensembles where more than one musician will use the same instrument.



### Portability

The frames have been superbly crafted of beautiful natural-finish wood and strong lightweight metal. They are designed to make transport as easy as possible and can be quickly dismantled and reassembled. The 'one-piece' design resonators fold in the middle for easy packing or assembly. And the streamlined end pieces with 4 (100mm) casters permit smooth maneuvering through doorways.



## YM 5100A

Range: C-c4, 5 octaves  
 Bars: Rosewood  
 Bar sizes: 72-41mm Wide, 24-20mm Thick  
 Pitch: A=442Hz (other pitches available by special order)  
 Resonators: Helmholtz (C to F),  
 Round corerd rectangle (F#-A#)  
 Height Adjustments: Gas spring support system 86-101cm  
 Dimensions (WxD): 261x103cm  
 Weight: 96kg

Scale Range



## YM 4900A

Range: F-c4, 4 1/2 octaves  
 Bars: Rosewood  
 Bar sizes: 65-41mm Wide, 24-20mm Thick  
 Pitch: A=442Hz (other pitches available by special order)  
 Resonators: Helmholtz (F),  
 Round corerd rectangle (F#-A#)  
 Height Adjustments: Gas spring support system 86-101cm  
 Dimensions (WxD): 235x96cm  
 Weight: 78kg

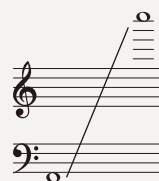
Scale Range



## YM 4600A

Range: A-c4, 4 1/3 octaves  
 Bars: Rosewood  
 Bar sizes: 65-41mm Wide, 24-20mm Thick  
 Pitch: A=442Hz (other pitches available by special order)  
 Resonators: Round  
 Height Adjustments: Gas spring support system 86-101cm  
 Dimensions (WxD): 219x91cm  
 Weight: 68kg

Scale Range





Acoustalon™ is an artificial wood that offers a rich, beautiful sound that is incredibly close to natural rosewood. Made of FRP (Fiber Reinforced Plastic), this revolutionary material is unaffected by changes in temperature or humidity, and is much less prone to damage. Marimbas that feature Acoustalon™ are ideal for use in school environments where instruments are subject to heavy use.

# MARIMBAS



YM 2400R

## YM 2400 (R)

Range: A-c4, 4 1/3 octaves  
 Bars: Rosewood (YM 2400R)  
 Bars: Acoustalon (YM 2400)  
 Bar sizes: 58-38mm Wide, 25-21mm Thick (YM 2400R)  
 Bar sizes: 58-38mm Wide, 23mm Thick (YM 2400)  
 Pitch: A=442Hz (other pitches available by special order)  
 Height Adjustments: 89-97cm  
 Dimensions (WxD): 198x88cm  
 Weight: 55kg (YM 2400R)  
 Weight: 61kg (YM 2400)

### Scale Range



YM2400R with rosewood bars is also available.



## YM 410

Range: C-c4, 4 octaves  
 Bars: Rosewood  
 Bar sizes: 58-38mm Wide, 25-21mm Thick  
 Pitch: A=442Hz (other pitches available by special order)  
 Resonator adjustment: 3-tracking system  
 Height Adjustments: 76-88cm  
 Dimensions (WxD): 188x84cm  
 Weight: 49kg

### Scale Range





The YM 1430 and the YM 40 marimba have tone bars made of select padauk which offers an ideal balance between tone and price for the budget conscious. It features a reinforced frame and a unique adjustable height system, perfect for the younger percussionist.



## YM 1430

Range: A-c4, 4 1/3 octaves

Bars: Padauk

Bar sizes: 58-38mm Wide, 24-22.5mm Thick

Pitch: A=442Hz (other pitches available by special order)

Height Adjustments: 88-98cm

Dimensions (WxD): 188x84cm

Weight: 49kg

Scale Range



## YM 40

Range: c-f3, 3 1/2 octaves

Bars: Padauk

Bar sizes: 53-40mm Wide, 24.5-22.5mm Thick

Pitch: A=442Hz

Height Adjustments: 82-94cm

Dimensions (WxD): 154x80cm

Weight: 39kg

Scale Range



Using a special aluminum alloy developed by our metallurgists allows our vibes to respond well at low dynamics without distorting at high volume levels. A specialized tuning method delivers a pure fundamental with solid, full tone and projection. These world-class instruments offer the vibist beautiful tone supported by practical designs.

# VIBRAPHONES



## YV 4110(M)

Range: c-c4, 4 octaves  
 Bars: Gold mirror finish aluminium alloy (YV4110)/  
 Gold satin finish aluminum alloy (YV4110M)  
 Bar sizes: 39-57mm Wide, 13mm Thick  
 Pitch: A=442Hz (other pitches available by special order)  
 Motor: YVM 300 Pause-memory controller (25-150rpm)  
 Dimensions (WxD): 185x83cm  
 Height adjustments: 86-94cm  
 Weight: 65kg

Scale Range



## YV 3910(M)

Range: c-f3, 3 1/2 octaves  
 Bars: Gold mirror finish aluminium alloy (YV3910)/  
 Gold satin finish aluminum alloy (YV3910M)  
 Bar sizes: 39-57mm Wide, 13mm Thick  
 Pitch: A=442Hz (other pitches available by special order)  
 Motor: YVM 300 Pause-memory controller (25-150rpm)  
 Dimensions (WxD): 164x83cm  
 Height adjustments: 86-94cm  
 Weight: 61kg

Scale Range



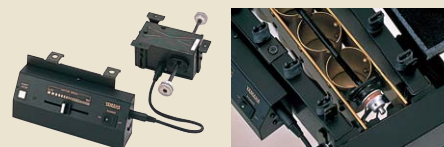
## YV 3710(M)

Range: f-f3, 3 octaves  
 Bars: Gold mirror finish aluminium alloy (YV3710)/  
 Gold satin finish aluminum alloy (YV3710M)  
 Bar sizes: 39-57mm Wide, 13mm Thick  
 Pitch: A=442Hz (other pitches available by special order)  
 Motor: YVM 300 Pause-memory controller (25-150rpm)  
 Dimensions (WxD): 143x82cm  
 Height adjustments: 86-94cm  
 Weight: 58kg

Scale Range



All Yamaha vibes feature a compact fan motor and pulley system. A silent pause and slider control provides quiet operation and exceptional musical expression. The YVM 300 motor is equipped with our exclusive memory system that returns the fans to a pre-determined position regardless of where the fans are when the pause button is pressed.







The YV2700 is available with gold resonators and glossy, gold bars for a bright, projecting sound (YV 2700G), and with silver resonators and matte finish silver bars for a mellower, focused sound (YV 2700).

A height-adjustable frame with dual, parallel crossbars ensures stability during play and transport.

## YV 2700(G)

Range: f-f3, 3 octaves

Bars: Gold mirror finish aluminum alloy (YV 2700G)/  
Silver satin finish aluminum alloy (YV 2700)

Bar sizes: 57-39mm Wide, 13mm Thick

Pitch: A=442Hz (other pitches available by special order)

Motor: YVM 200 Pause controller (25-150rpm)

Dimensions (WxD): 143x82cm

Height adjustments: 81-89cm

Weight: 52kg

Scale Range



The YV 1605 is an inexpensive alternative based on our high-grade model vibes. The special aluminum alloy provides exceptional tone quality and the fan motor offers variable speeds. The frame height is adjustable and the pedal is oversized for player comfort.

## YV 1605

Range: 3 octaves, F33-F69

Bars: Matte finish silver aluminum alloy

Bar sizes: 1 1/2" Wide, 1/2" Thick

Pitch: A=442Hz (other pitches available by special order)

Motor: YVM 200 Pause controller (25-150rpm)

Height adjustment: 31 1/2"-34 5/8"

Scale Range



As a compact, lightweight vibes, the YV 520 uses a narrow, non-graduated bar design without non-essential, accidental resonators. Professional features include accurate tuning, variable speed motor with silent on/off, sturdy frame, height adjustment, large casters, oversized pedal and double-locking pedal assembly.

## YV 520 Student Vibraphone

Range: f-f3, 3 octaves

Bars: Silver satin finish aluminum alloy

Bar sizes: 32mm Wide, 10mm Thick

Pitch: A=442Hz

Motor: YVM 100 Pause controller (25-150rpm)

Dimensions (WxD): 106x68cm

Height adjustments: 79-87cm

Weight: 31kg

Scale Range



Yamaha's xylophone lineup offers a selection of tone bar materials that fit a variety of performance requirements. Tone bars hand crafted from the finest rosewood offer beautiful tone and superior projection. Yamaha's original Acoustalon delivers a tone remarkably close to rosewood from an artificial wood that is highly durable and little affected by changes in temperature or humidity. Paduak offers superb tonal clarity and resonance at an affordable price.



## YX 500R

Range: f1-c5, 3 1/2 octaves  
 Bars: Rosewood  
 Bar sizes: 40mm Wide, 23mm Thick  
 Pitch: A=442Hz (other pitches available by special order)  
 Dimensions (WxD): 138x75cm  
 Height adjustments: 80-95cm  
 Weight: 35kg



## YX 500F

Range: f1-c5, 3 1/2 octaves  
 Bars: Acoustalon  
 Bar sizes: 38mm Wide, 23mm Thick  
 Pitch: A=442Hz (other pitches available by special order)  
 Dimensions (WxD): 138x75cm  
 Height adjustments: 80-95cm  
 Weight: 38kg



## YX 135

Range: f1-c5, 3 1/2 octaves  
 Bars: Paduak  
 Bar sizes: 34mm Wide, 17.5mm Thick  
 Pitch: A=442Hz (other pitches available by special order)  
 Dimensions (WxD): 123x62cm  
 Height: 87cm  
 Weight: 22kg





## YX 30G

Range: c2-c5, 3 octaves  
 Bars: Padauk  
 Bar sizes: 34mm Wide, 17.5mm Thick  
 Pitch: A=442Hz  
 Dimensions (WxD): 106x55cm  
 Height: 82cm  
 Weight: 17kg  
 Mallets & dust cover included



## YX 35G

Range: c1-f4, 3 1/2 octaves  
 Bars: Padauk  
 Bar sizes: 34mm Wide, 17.5mm Thick  
 Pitch: A=442Hz  
 Dimensions (WxD): 120x66cm  
 Height: 82cm  
 Weight: 21kg  
 Mallets & dust cover included

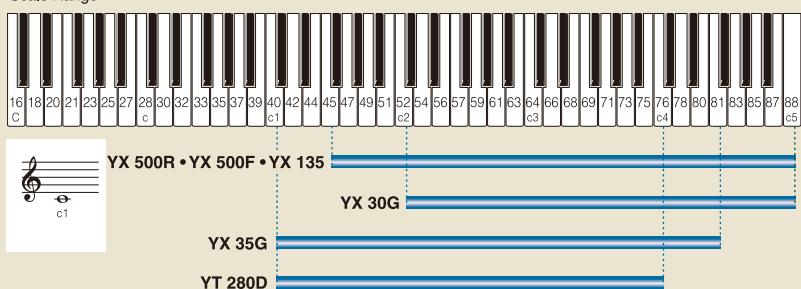


## Metallophone

## YT 280D

Range: c1-c4, 3 octaves  
 Bars: Silver satin finish aluminum alloy  
 Bar sizes: 32mm Wide, 10mm Thick  
 Pitch: A=442Hz  
 Dimensions (WxD): 106x62cm  
 Height: 78cm  
 Weight: 24kg  
 Mallets & dust cover included

Scale Range



Yamaha glockenspiel tone bars are made of high carbon steel and treated with a special tempering process to produce a bright pure tone. The bars are mounted on the frame using either a suspension cord system (YG 2500) or Nodal point support string with single pin bar mounting (YG 1210, YG 250D) to increase sustain and maximize resonance. The YG 2500 features a pedal dampening system and built-in frame with gas spring assisted height adjustment.



## YG 2500

Range: c2-e5, 3 1/2 octaves  
Bars: High carbon steel  
Bar sizes: 32.5mm Wide, 9mm Thick  
Pitch: A=442Hz (other pitches available by special order)  
Height adjustment: Gas spring support system 85-105cm  
Dimensions (WxD): 106x56cm  
Weight: 36kg



Stand: YGS 100

## YG 1210

Range: f2-c5, 2 1/2 octaves  
Bars: High-carbon steel  
Bar sizes: 31mm Wide, 7.8mm Thick  
Pitch: A=442Hz  
Dimensions (WxDxH): 79x48x11cm  
Weight: 15.7kg (case included)  
Case cover: Removable  
Frame: Removable from case  
Mallets & Case included



YG 1210 and YG 250D utilize nodal point support string to minimize the contact with the tone bar. In combination with single pin bar mounting, this system affords excellent sustain, purity of tone and superb resonance from the bars.



## YG 250D

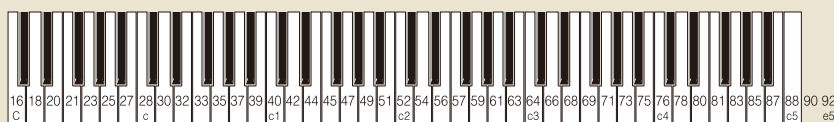
Range: f2-c5, 2 1/2 octaves  
Bars: High-carbon steel  
Bar sizes: 30mm Wide, 5mm Thick  
Pitch: A=442Hz  
Dimensions (WxDxH): 73x46x8cm  
Weight: 9.3kg (case included)  
Case cover: Removable  
Frame: Fixed in case  
Mallets & Case included



## Glockenspiel Stand/Trap table YGS 100

Height adjustment: 73-85cm  
Dimensions (WxD): 81x51cm

Scale Range



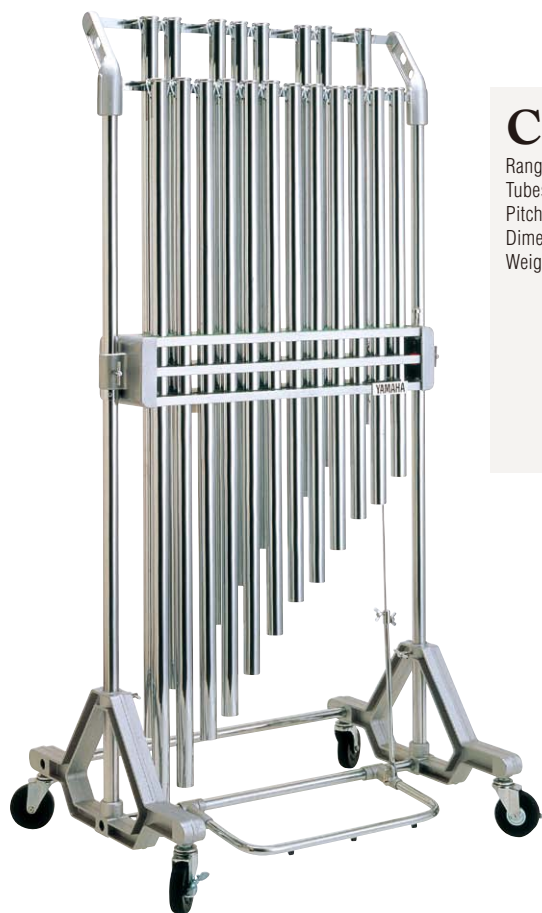
YG 250D • YG 1210

YG 2500





Using chrome finished brass chime tubes that are larger in diameter and with extra wall thickness, the Yamaha CH 500 Chime produces a full, rich tone. The pedal damper system operates with a quick, positive feel and features a lock to hold the damper open until its release by touching the pedal. Sturdy uprights and crossbars of heavy gauge steel reduce sway while increasing stability during performance.



## CH 500

Range: c2-g3, 1 1/2 octaves  
Tubes (Columns): Chrome finished Brass, 38.1mm deameter  
Pitch: A=442Hz (other pitches available by special order)  
Dimensions (WxDxH): 179.8x86x67.8cm  
Weight: 84kg

Scale Range



### Damper

The CH 500 is equipped with a three board damper system that permits quick dampening, and a one touch damper stopper to hold the damper open.



### Wire

Coated steel wires are wrapped in a fluorine resin tube. The double covering prevents noise and gives the sound more projection and clarity.



### Base

The U-shaped pedal offers easy operation from any playing position. The base section is designed with a heavy-duty structure to provide maximum stability.

### Tubes (Columns)

Models	Scale*
CH52 C	C52
CH53 C*	C*53
CH54 D	D54
CH55 D*	D*55
CH56 E	E56
CH57 F	F57
CH58 F*	F*58

Models	Scale*
CH59 G	G59
CH60 G*	G*60
CH61 A	A61
CH62 A*	A*62
CH63 B	B63
CH64 C	C64
CH65 C*	C*65

Models	Scale*
CH66 D	D66
CH67 D*	D*67
CH68 E	E68D
CH69 F	F69
CH70 F*	F*70
CH71 G	G71

\*The pitches given here are based on the true frequency produced by the chime tube.  
The pitch that is actually heard by the ear is one octave lower due to overtones produced by the tube.

### Chime Stand



CHS 506  
For 6 tubes



CHS 520  
For 20 tubes (with damper)

## Chime Mallets

### Specifications

Models	Unit	length (mm)	Material	Hardness	Size
CHM 601	1 piece	295mm	Oak	Medium	ø35x110mm
CHM 602	1 piece	295mm	Oak	Medium	ø42x110mm
CHM 603	1 piece	295mm	Plastic	Medium Soft	ø40x110mm
CHM 604	1 pair	295mm	Plastic	Medium Soft	ø35x110mm
CHM 605	1 pair	295mm	Reinforced plywood	Hard	ø35x110mm



CHM 601

CHM 602

CHM 603

CHM 604

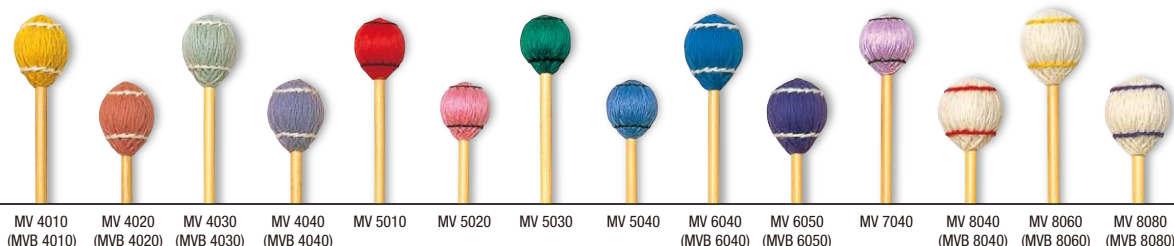
CHM 605

From professional to educational, Yamaha offers a wide selection of mallet types designed for use in a broad range of musical situations. Made of the highest quality materials these mallets are designed to provide optimum communication between the percussionists and the instrument.

# KEYBOARD MALLET'S

## Professional Models

Mallets found in our professional models have been carefully designed with specific weights and special characteristics that allow the player to draw substantial tone from the instrument. The core on our two-tone models is wrapped with a special rubber porous with air, which results in an obvious change in tone when going between a hard-hitting forte and delicate piano. Every mallet in the series is carefully made by hand to guarantee the very highest level of quality. Yarn wound models are available with either rattan or birch shafts.



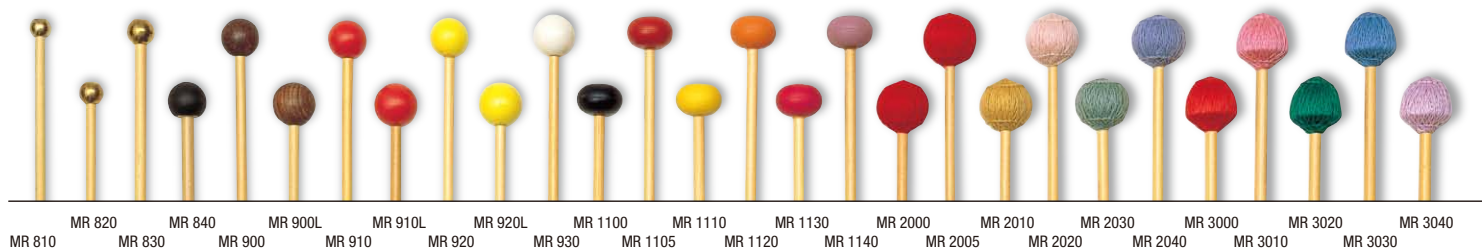
## Keiko Abe Signature Models

Designed in close collaboration with Keiko Abe, her Signature Series Mallets are designed to draw out the most from both the performer's technique and tone from the instrument in compositions that require exceptional technique. Ideal for advanced players, these mallets are much heavier than regular mallets. This causes the marimba's tone bars to resonate fully creating a sound that has been up until now, difficult to obtain. The round yarn wound heads are heavier than standard mallets, but they are fully capable of delivering delicate expression.



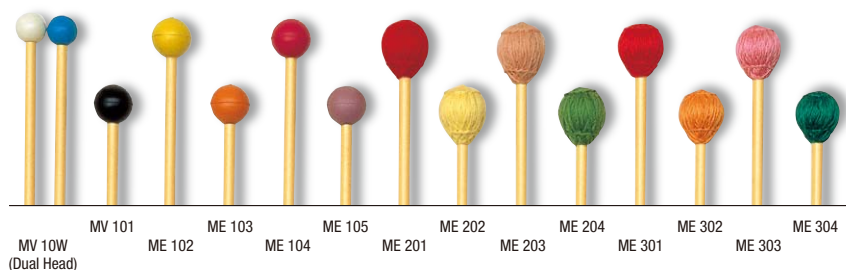
## Regular Models

Covering a wide range of styles, Yamaha's Regular series mallets possess a handmade quality similar to our Virtuoso line. Regular model mallets are lighter in weight for enhanced endurance, yet can produce a solid rich tone.



## Educational Models

Designed especially for students, the Educational series provides an ideal combination of weight and balance perfectly suited for younger players. The hollow shafts are of flexible, durable FRP with a non-slip finish.



FRP: Fiber Reinforced Plastic



## Yamaha Mallets Heads

### Hard Rubber

Rubber heads work well on a wide variety of instruments. They range from very hard—well suited for glockenspiels and xylophones—to softer heads which can be used on marimbas.

### Rosewood, Hytrel®, Lexan®, ABS

These extremely hard materials are excellent for use on glockenspiels and xylophones. A wide variety of sounds can be obtained depending on size and the material used. Yamaha's wooden heads are of the finest Rosewood for a crisp decisive tone. Lexan produces a heavier, harder sound. ABS is lighter and bright. Hytrel has a soft, pure, well centered sound.

### Brass

Brass heads are mainly for use on glockenspiels. When a bright, clear, metallic tone is desired, brass can be a perfect choice.

### Ebonite with Brass Core (MR 840)

For use on glockenspiel only. This mallet has a large, heavy brass core for a strong sound that projects well.

### Yarn

Yarn wound heads produce a pleasingly mellow tone which is excellent for use on marimbas. These mallets are also effective for use on xylophones and vibraphones.

### Cord

Harder than yarn, cord wound heads produce a brighter tone. Excellent for articulating passages with precision and clarity.

## Yamaha Mallets Specifications

### Professional Rattan Shaft Models

Models	Material	Head	Core size	Shaft	Length	Recommended					
		Hardness				Glockenspiel	Vibes	Xylophone	Marimba		
MV 4010	Yarn Wound	H	ø30x23mm	Rattan	400mm		✓		✓		
MV 4020		MH					✓		✓		
MV 4030		MS					✓		✓		
MV 4040		S	ø33x23mm				✓		✓		
MV 6040		VS							✓		
MV 6050		MS							✓		
MV 8040		VS	ø36x23mm						✓		
MV 8060		ES							✓		
MV 8080		H							✓		
MV 5010	Cord Wound	MH	ø30x23mm				✓		✓		
MV 5020		MS					✓		✓		
MV 5030		S					✓		✓		
MV 5040							✓		✓		
MV 7040							✓		✓		

### Professional Birch Shaft Models

Professional Birch Shaft Model									
Models	Material	Head		Shaft	Length	Recommended			
		Hardness	Core size			Glockenspiel	Vibes	Xylophone	Marimba
MVB 4010	Yarn Wound	H	ø30x23mm	Birch	440mm				✓
MVB 4020		MH							✓
MVB 4030		MS							✓
MVB 4040		S	ø33x23mm						✓
MVB 6040		VS							✓
MVB 6050		MS							✓
MVB 8040		VS	ø36x23mm						✓
MVB 8060		VS							✓
MVB 8080		ES							✓

**Keiko Abe Signature Models** \*Since the core characteristics of these mallets differ from those of our regular mallets, the hardness scale will not always match the scale used with our regular mallets.

Models		Colored Band	Material	Head		Core Feature	Shaft	Length
				Hardness	Core size			
MKA 01	Red		Yarn Wound	Two-Tone	ø30x23mm	Dual-core with Synthetic leather	Rattan	430mm
MKA 02	Pink			VH	ø30x20mm			with additional weight
MKA 03	Orange			H				
MKA 04	Yellow			MH				
MKA 05	Light Green			MS	ø30x23mm	Dual-core with rubber tube (1mm)		425mm
MKA 06	Green			S				
MKA 07	Blue			VS	ø33x23mm	Dual-core with rubber tube (2mm)		430mm
MKA S7	Blue & Light Blue			ES				
MKA 08	Light Blue							
MKA 09	Purple							

### Regular Models

Models	Material	Head		Shaft	Length	Recommended			
		Hardness	Core size			Glockenspiel	Vibes	Xylophone	Marimba
MR 810	Brass	EH	ø14mm		320mm	✓			
MR 820			ø16mm			✓			
MR 830			ø18mm			✓			
MR 840	Ebonite (Brass Core)	VH	ø25mm		300mm	✓			
MR 900	Rosewood (Medium)		ø28mm					✓	
MR 900L	Rosewood (Large)		ø25mm					✓	
MR 910	Lexan (Medium)	EH	ø28mm		370mm	✓		✓	
MR 910L	Lexan (Large)		ø25mm			✓		✓	
MR 920	ABS (Medium)		ø28mm			✓		✓	
MR 920L	ABS (Large)	VH	ø25mm		400mm	✓		✓	
MR 930	Hytrel	H	ø28mm					✓	
MR 1100	Hard Rubber	EH	ø30x20mm	Rattan	390mm	✓		✓	
MR 1105		VH				✓		✓	
MR 1110		H							✓
MR 1120		MH							✓
MR 1130		MS							✓
MR 1140	Yarn Wound (Round Head)	S							✓
MR 2000		EH	ø30.7x19mm		400mm			✓	
MR 2005		VH						✓	
MR 2010		H					✓		✓
MR 2020		MH					✓		✓
MR 2030		MS					✓		✓
MR 2040	Cord Wound (Mushroom Head)	S					✓		✓
MR 3000		VH					✓		✓
MR 3010		H					✓		✓
MR 3020		MH					✓		✓
MR 3030		MS					✓		✓
MR 3040		S					✓		✓

### Educational Models

Models	Material	Head		Shaft	Length	Recommended			
		Hardness	Core size			Glockenspiel	Vibes	Xylophone	Marimba
ME 10W	Hytrel (Dual Head)	H&S	ø20mm		345mm	✓		✓	
ME 101		VH	ø25mm			✓		✓	
ME 102	Rubber	H	ø25mm		375mm			✓	✓
ME 103		MH						✓	✓
ME 104		MS						✓	✓
ME 105		S							✓
ME 201	Yarn Wound	H	ø25x20mm	FRP	385mm				✓
ME 202		MH							✓
ME 203		MS							✓
ME 204		S							✓
ME 301	Cord Wound	H					✓		
ME 302		MH					✓		
ME 303		MS					✓		
ME 304		S					✓		

EH: Extra Hard VH: Very Hard H: Hard MH: Medium Hard  
MS: Medium Soft S: Soft VS: Very Soft ES: Extra Soft



From the hand hammered copper bowls of our high-end series instruments, to the hand spun aluminum bowls of our extremely portable models, Yamaha Symphonic Series Timpani are crafted to deliver precise musical control with the dynamic range timpanists require. Bowls are spun with precision to ensure uniform wall thickness for pure resonance and a beautiful tone. They are then suspended in a thin, rigid support ring to further enhance dynamic range and tonal projection. This allows pure, undistorted sound—even at dynamic extremities—with an efficient transfer of acoustical energy.

## TP 5000H (G) Hammered Symphonic Series



## TP 5000 (G) Symphonic Series

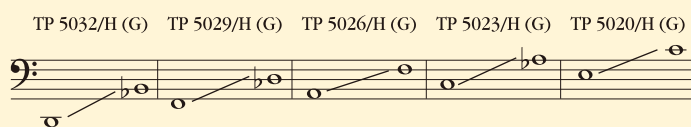


### Specifications

Models	Size	Range	Bowl	Struts
TP 5020/H (G)	20" (51cm)	e-c <sup>1</sup>	Hammered Copper	6
TP 5023/H (G)	23" (58cm)	c-a <sup>2</sup>	Hammered Copper	6
TP 5026/H (G)	26" (66cm)	A-f	Hammered Copper	8
TP 5029/H (G)	29" (74cm)	F-d <sup>3</sup>	Hammered Copper	8
TP 5032/H (G)	32" (81cm)	D-B <sup>4</sup>	Hammered Copper	8

- 5000H series head; Renaissance™ head by Remo™ with aluminum insert ring for increased dynamic range and resonance.
- 5000 series head: Improved Remo head with aluminum insert ring for increased dynamic range and resonance.
- Head protector, tuning key, and mallets are included.

### Scale Range



Hammering the entire bowl, not just a part, on the 5000H Symphonic Series Timpani delivers superior tone, pitch and sustain.



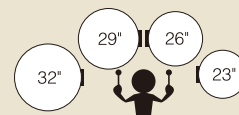
Providing percussionists with a way to tailor pedal feel to meet individual needs, our exclusive Pedal Adjustment Clutch (PAC) system has been redesigned and streamlined. Now offering access from the top of the base the system is simple, durable and less susceptible to damage from dirt.



Tuning indicators are equipped with accidental markers for better tuning accuracy and are set in a closed housing for smoother operation and greater durability. Tension rod height is kept lower than the counter hoop surface to keep the playing area unobtrusive. The counter hoop and tuning gauge are given a black finish to eliminate glare from lights.

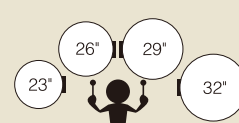
### TP 5000H/5000

Standard configuration with fixed tuning gauges.



### TP 5000HG/5000G

German style configuration.





## TP 3100EA Portable Concert Series



The larger sized pedal is easier and smoother to operate.



The TP 3100EA Series timpani are easier to carry, and the legs are stronger and more durable.



Memory marks on the durable legs provide for quicker setups and more accurate height adjustment. Legs slide into the kettle for compact portability.



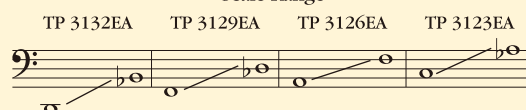
The tuning indicator can be fit on either side, allowing for German or universal setups. Also these mounts can be used to lift the instrument.

### Specifications

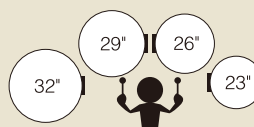
Models	Size	Range	Bowl	Height with leg folded
TP 3123EA	23" (58cm)	c-a <sup>+</sup>	Aluminum	530mm
TP 3126EA	26" (66cm)	A-f	Aluminum	560mm
TP 3129EA	29" (74cm)	F-d <sup>+</sup>	Aluminum	590mm
TP 3132EA	32" (81cm)	D-B <sup>+</sup>	Aluminum	620mm

Head protector, tuning key, mallets, and wrenches (pedal adjustment/repositioning tuning indicator) are included.

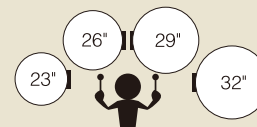
### Scale Range



Standard configuration with fixed tuning gauges.



German style configuration.



## Timpani Mallets

Yamaha offers two different series of timpani mallets. The heads of the 200 series are more rounded than those of the 100 series. Both are offered with three different degrees of hardness.

### Specifications

Models	Hard	Medium	Soft
200 Series	230	250	270
100 Series	130	150	170



Yamaha concert toms feature oak or birch shells to produce a full, directional sound which is dry and has a sharp attack.

## CONCERT TOMS

**NEW** CT 900 Series



## Specifications

Models	size	Shell	Models	size	Shell
CT 906	6"x6 1/2"	6-ply oak	CT 913	13"x10 1/2"	6-ply oak
CT 908	8"x8"	6-ply oak	CT 914	14"x11"	6-ply oak
CT 910	10"x9"	6-ply oak	CT 915	15"x11 1/2"	6-ply oak
CT 912	12"x10"	6-ply oak	CT 916	16"x12"	6-ply oak



YESS II-m Mount system &amp; oak shell

**NEW** CT 8000 Series



YESS Mount system

## Specifications

Models	size	Shell	Models	size	Shell
CT 8006	6"x5 1/2"	Birch ply	CT 8013	13"x9"	Birch ply
CT 8008	8"x5 1/2"	Birch ply	CT 8014	14"x10"	Birch ply
CT 8010	10"x6"	Birch ply	CT 8015	15"x12"	Birch ply
CT 8012	12"x8"	Birch ply	CT 8016	16"x14"	Birch ply

**Tom stand WS 865A (Optional)**

The WS 865A tom stand utilizes a ball and socket design for complete adjustment and stability. The stand features a strong double-braced leg design, and securely supports two drums.



Yamaha offers a wide selection of concert snare drums for many mediums of music. The lineup offers drums made from a unique combination of materials, with different sizes and depths to provide percussionists with a snare drum that fits their needs. Each drum is designed to deliver excellent response with a consistent high quality tone—even in extremities of the dynamic range.

## Grand Snare Drums



### GSR 1450

- Size: 14"x5"
- Shell: Rosewood 17mm (Barreled shaping), Double-cut shape edge/Extra deep snare bed
- Rim: 3.0mm Zinc die-cast
- Snare: Brass coiled wires (9 strands), Black nylon coated cables (14 strands), Stainless straight cables (8 strands)
- Extra snare: High-carbon steel coiled wires (7 stands)
- Strainer System: J type/Triple snare system
- Head: <Batter> Yamaha Remo Renaissance Diplomat <Snare> Yamaha Remo Snare Diplomat
- Finish: Matte natural



### GSM 1465

- Size: 14"x6 1/2"
- Shell: Maple 10-ply, Double-cut shape edge/Extra deep snare bed
- Rim: 3.0mm Zinc die-cast
- Snare: Brass coiled wires (9 strands), Black nylon coated cables (14 strands), Stainless straight cables (8 strands)
- Extra snare: High-carbon steel coiled wires (7 stands)
- Strainer System: J type/Triple snare system
- Head: <Batter> Yamaha Remo Renaissance Diplomat <Snare> Yamaha Remo Snare Diplomat
- Finish: Matte natural



### GSM 1450

- Size: 14"x5"
- Shell: Maple 10-ply, Double-cut shape edge/Extra deep snare bed
- Rim: 3.0mm Zinc die-cast
- Snare: Brass coiled wires (9 strands), Black nylon coated cables (14 strands), Stainless straight cables (8 strands)
- Extra snare: High-carbon steel coiled wires (7 stands)
- Strainer System: J type/Triple snare system
- Head: <Batter> Yamaha Remo Renaissance Diplomat <Snare> Yamaha Remo Snare Diplomat
- Finish: Matte natural



### BSM 1465

- Size: 14"x6 1/2"
- Shell: Maple 6-ply, Double-cut shape edge
- Rim: 3.0mm Aluminum die-cast
- Snare: Nylon coated stainless steel straight cables (3+10+3 strands)

- Strainer System: K type
- Head: <Batter> Yamaha Remo Renaissance Diplomat <Snare> Yamaha Remo Snare Diplomat
- Finish: Violin sunburst



### BSM 1450

- Size: 14"x5"
- Shell: Maple 6-ply, Double-cut shape edge
- Rim: 3.0mm Aluminum die-cast
- Snare: Nylon coated stainless steel straight cables (3+10+3 strands)

- Strainer System: K type
- Head: <Batter> Yamaha Remo Renaissance Diplomat <Snare> Yamaha Remo Snare Diplomat
- Finish: Violin sunburst



### CSM 1465A

- Size: 14"x6 1/2"
- Shell: Maple 6-ply, Double-cut shape edge/Extra deep snare bed
- Rim: 2.3mm Steel, triple-flange
- Snare: Stainless steel coiled wires (14 strands), Extra snare: Naked stainless steel straight cables (14 strands)
- Strainer System: P type
- Head: <Batter> Yamaha Remo Renaissance Diplomat <Snare> Yamaha Remo Snare Diplomat
- Finish: Matte natural



### CSM 1450A

- Size: 14"x5"
- Shell: Maple 6-ply, Double-cut shape edge/Extra deep snare bed
- Rim: 2.3mm Steel, triple-flange
- Snare: Stainless steel coiled wires (14 strands), Extra snare: Naked stainless steel straight cables (14 strands)
- Strainer System: P type
- Head: <Batter> Yamaha Remo Renaissance Diplomat <Snare> Yamaha Remo Snare Diplomat
- Finish: Matte natural



### CSM 1345A

- Size: 13"x4 1/2"
- Shell: Maple 6-ply, Double-cut shape edge/Extra deep snare bed
- Rim: 2.3mm Steel, triple-flange
- Snare: Stainless steel coiled wires (14 strands)
- Strainer System: P type
- Head: <Batter> Yamaha Remo Coated Ambassador <Snare> Yamaha Remo Snare Diplomat
- Finish: Matte natural



### CSC 1455

- Size: 14"x5 1/2"
- Shell: Copper 1.2mm, Rounded edge
- Rim: 2.3mm Steel, triple-flange
- Snare: 0.6mm Brass straight cables (14 stands)
- Strainer System: H type
- Head: <Batter> Yamaha Remo Coated Ambassador <Snare> Yamaha Remo Snare Ambassador
- Finish: Clear lacquer



### CSS 1465

- Size: 14"x6 1/2"
- Shell: Steel 1.2mm, Rounded edge
- Rim: 1.6mm Steel, triple-flange
- Snare: High-carbon steel coiled wires (20 stands)
- Strainer System: H type
- Head: <Batter> Yamaha Remo Coated Ambassador <Snare> Yamaha Remo Snare Ambassador
- Finish: Black powder coating



### CSS 1455

- Size: 14"x5 1/2"
- Shell: Steel 1.2mm, Rounded edge
- Rim: 1.6mm Steel, triple-flange
- Snare: High-carbon steel coiled wires (20 stands)
- Strainer System: H type
- Head: <Batter> Yamaha Remo Coated Ambassador <Snare> Yamaha Remo Snare Ambassador
- Finish: Black powder coating



### KSD 255

- Size: 14"x5 1/2"
- Shell: Steel 1.0mm, Rounded edge
- Rim: 1.6mm Steel, triple-flange
- Snare: High-carbon steel coiled wires (20 stands)
- Strainer System: B-8 type
- Head: <Batter> Coated type <Snare> Snare side clear type
- Finish: Chrome plated
- Extra: Inner Mute System



### SS745A

- Concert height stand with single braced legs
- Height (Min.–MAX.) 571–901mm



### SS665

- Concert height stand with single braced legs
- Height (Min.–MAX.) 530–764mm

Yamaha offers a wide range of concert bass drums to fit nearly any performance requirements. All shells are formed using Yamaha's proprietary Air-Seal System, which delivers a perfectly round shell. Shells have 8 to 10 ply construction, depending upon the series, and are fitted with birch and mahogany or steel rims that offer added strength. They also feature high-tension lug casings and key-rod tension rods that allow greater freedom of movement during performance.

### CB 800 Series

The CB 800 series have set a standard of excellence with superb construction, a powerful tone and outstanding fundamental sustain. The maple shell is fitted with steel hoops and specially designed small-body lugs for maximum shell resonance.

**CB 840C**



Stand: BS 840C

**CB 836C**



Stand: BS 836C

**CB 832C**



Stand: BS 832C

### CB 700 Series

The CB 700 series 10-ply shell is constructed of birch and mahogany. It is available in three size and features high-tension lugs with wing type tuning bolts for quick and precise tuning.

**CB 740D**



Stand: BS 753

**CB 736D**



Stand: BS 753

**CB 732D**



Stand: BS 751



## CB 600 Series

The CB 600 series feature 8-ply birch and mahogany wood shells covered with a beautiful black finish. Tuning is easily carried out with the supplied tuning key.



### Air-Seal System

Only Yamaha's ingenious Air-Seal System can create a drum shell that is truly round and extremely durable. Plies of select woods are positioned with diagonal seams staggered evenly around the shell and sealed in a cast iron mold. Pressurized air is then applied evenly outwards from inside the shell to eliminate any gaps or overlaps in the shell layers.



### High-Tension Lugs

High-tension lug casings provide in-line anchor points for tuning rods on both sides of the drum. The springless lugs are vibration free for tuning stability.

## CB 500 Series

The CB 500 series drums have 9-ply mahogany shells with sturdy birch and mahogany hoops. Wing type tuning bolts provide quick and precise tuning. These drums offer a design based on our popular CB 700 series at a more budget conscious price.



### Yamaha Concert Bass Drum Stand (BS 840C/BS 836C/BS 832C)



### Pivoting Lug Mount Stands (BS 753/BS 752/BS 751/BS 750)

The mount attaches firmly to the lugs and provides effortless rotation of the drum to any playing position. Four models are available to accommodate different shell sizes and playing height.



**BS 753/BS 751** Height: 89cm  
**BS 752/BS 750** Height: 79cm

### Folding Stands (BS 512/BS 510)

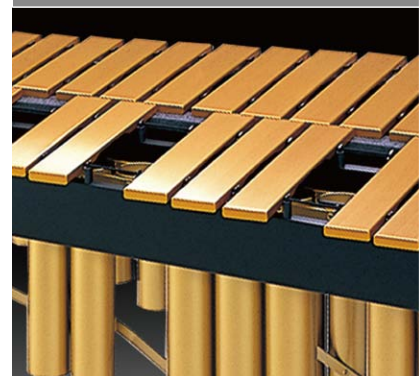
Lightweight and economical Yamaha's folding stands are height adjustable to provide players with a comfortable playing position.



\*The stands are sold separately.

## Specifications

Models	Size	Shell	Rim	Lug	Drum and Stand Combinations			
					BS 751 (BS 750)	BS 753 (BS 752)	BS 510	BS 512
CB 840C	40"x22" (102x56cm)	Maple Air-Seal	Steel	10		BS 840C only		
CB 836C	36"x22" (91x56cm)			10		BS 836C only		
CB 832C	32"x20" (81x51cm)			8		BS 832C only		
CB 740D	40"x18" (102x46cm)	Birch/Mahogany Air-Seal	Birch/ Mahogany	16		✓		✓
CB 736D	36"x16" (91x41cm)			12		✓		✓
CB 732D	32"x16" (81x41cm)			12	✓			✓
CB 636	36"x16" (91x41cm)	Birch/Mahogany Air-Seal	Birch/ Mahogany	12		✓		✓
CB 632	32"x16" (81x41cm)			12	✓			✓
CB 628	28"x14" (71x36cm)			10	✓		✓	
CB 532A	32"x14" (81x36cm)	Mahogany Air-Seal	Birch/ Mahogany	12	✓		✓	
CB 528A	28"x14" (71x36cm)			10	✓		✓	
CB 524A	24"x14" (61x36cm)			8			✓	



\*Specifications are subject to change without notice.  
\*Colors shown in this catalog may not be represented exactly as the original colors due to printing processes involved.

YAMAHA CORPORATION



LEP-1201 (P10024165) Printed in Japan