

# DOUBLEGEEK™

MADE  
IN USA

by REEDGEEK®

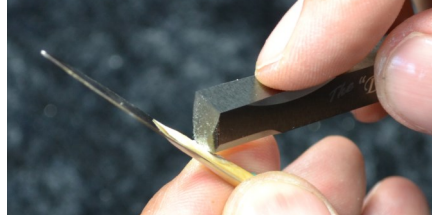


Thank you for your purchase of the DOUBLEGEEK™. The DOUBLEGEEK™ focuses on the specific needs of the double reed player, but is useful for all! Your new DOUBLEGEEK™ features two over-sized bevels for fine tuning the spines and corners with efficiency and ease, the tool has twelve cutting surfaces in all. Your DOUBLEGEEK™ is made of superior US alloy and features our Black Diamond wear finish, no sharpening is required for the life of the tool. The proprietary neoprene bag has a sewn-in micro-fiber cleaning cloth. Our Universal self-locking case is included for safety and storage of the tool when disassembled or for travel. REEDGEEK® products include a one year warranty.



The tip of the tool features an engineered radius that can be used for precision scraping, including balancing the tip, adjusting the heart and defining windows and channels. The radius allows single point contact for scraping very precise areas of the reed

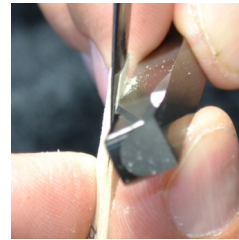
quickly. Also, blend your work by moving the tool in a circular motion, as you would a pencil eraser (picture below).



On each side of the radius are contoured blades that can be used to adjust or modify the rails of the reed or profile tip corners. The small blade adjusters cut quickly with great control. These adjusters are also strong enough to remove or reshape bark areas.



A planing scrape is shown using any one of the four 90° edges.



Visit [ReedGeek.com](http://ReedGeek.com) for additional videos on using the 'Geek to perfect your reeds.

**Please make sure to dry and wipe clean your DOUBLEGEEK™ after every use. Also, the occasional use of food grade mineral oil will keep the finish sparkling and scraping bevels protected. \*Use caution while wiping the 'Geek, as the edges are sharp.\***

SCAN FOR  
TUTORIAL

